



JOIN



NEARBY RETAILERS



RETAIL FOR LEASE

- National Anchors: Join brand new Starbucks and AutoZone
- High Visibility: Direct visibility on Lee Hwy with 3/4 access
- High Traffic: 47,924 vehicles per day on Lee Hwy
- Flexible Size: 1,200 - 6,900 SF endcap and inline space
- Outdoor patio seating available at endcap.

BO GALLES

bgalles@klnb.com | 703-268-2712

BILLY KELLY

bkelly@klnb.com | 703-268-2706

MARKET

SHOPS AT LAKE MANASSAS

14809-14825 LEE HWY, GAINESVILLE, VA 20155, PRINCE WILLIAM COUNTY



Gainesville
Prince William County | Virginia

klnb

© Google Earth Pro -
2024 Aerial Photograph
While we have no reason to doubt the accuracy of
any of the information supplied, we cannot,
and do not, guarantee its accuracy.

BO GALLES

bgalles@klnb.com | 703-268-2712

BILLY KELLY

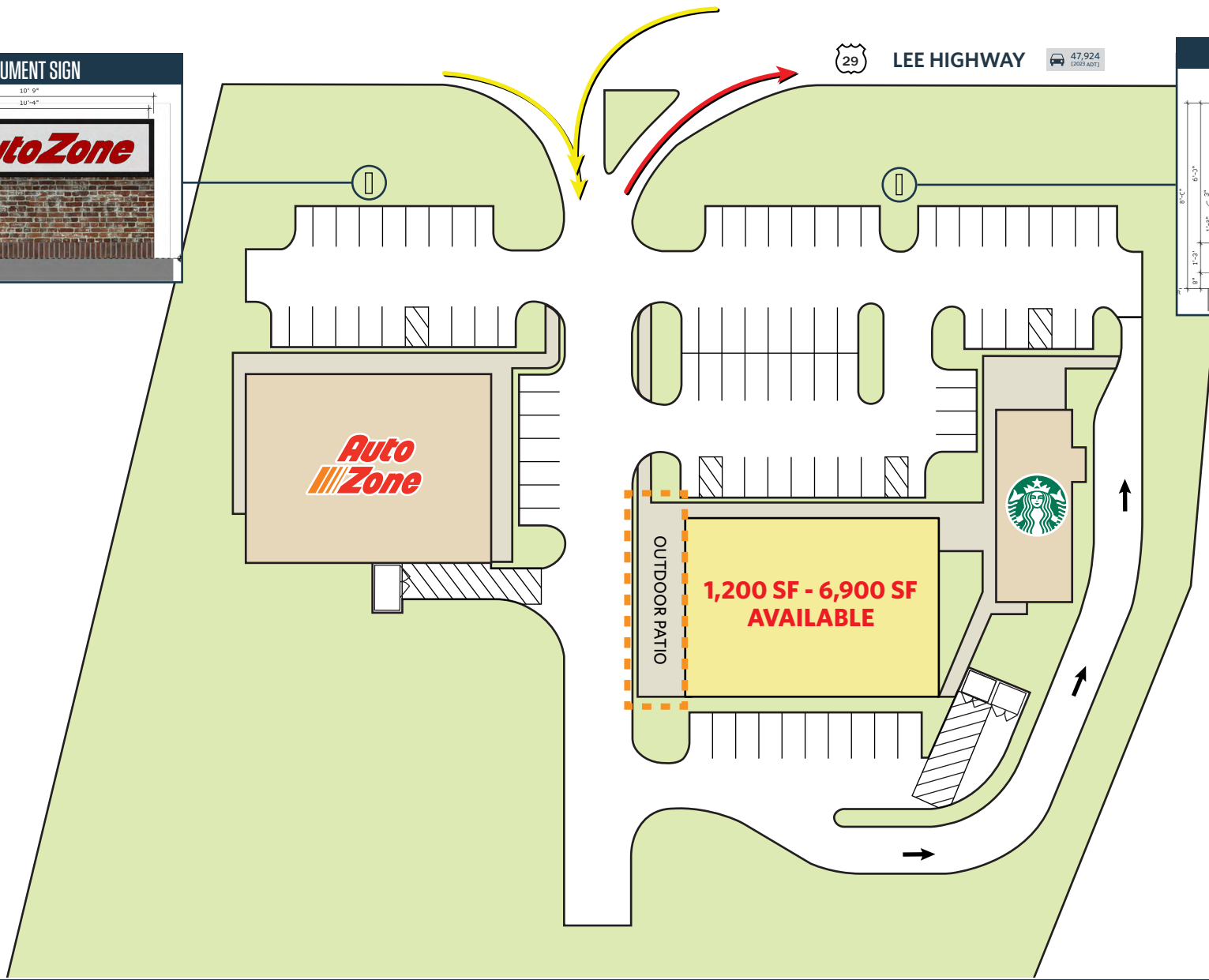
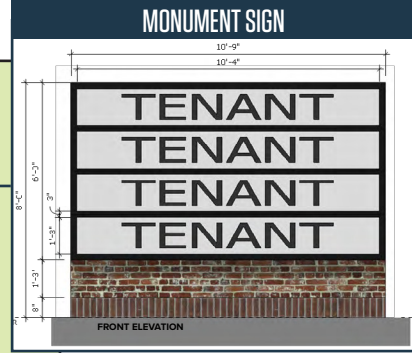
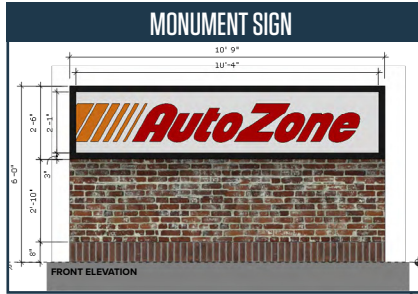
bkelly@klnb.com | 703-268-2706

klnb

SITE PLAN

SHOPS AT LAKE MANASSAS

14809-14825 LEE HWY, GAINESVILLE, VA 20155, PRINCE WILLIAM COUNTY



BO GALLES

bgalles@klnb.com | 703-268-2712

BILLY KELLY

bkelly@klnb.com | 703-268-2706



RENDERINGS | SHOPS AT LAKE MANASSAS

14809-14825 LEE HWY, GAINESVILLE, VA 20155, PRINCE WILLIAM COUNTY



BO GALLES

bgalles@klnb.com | 703-268-2712

BILLY KELLY

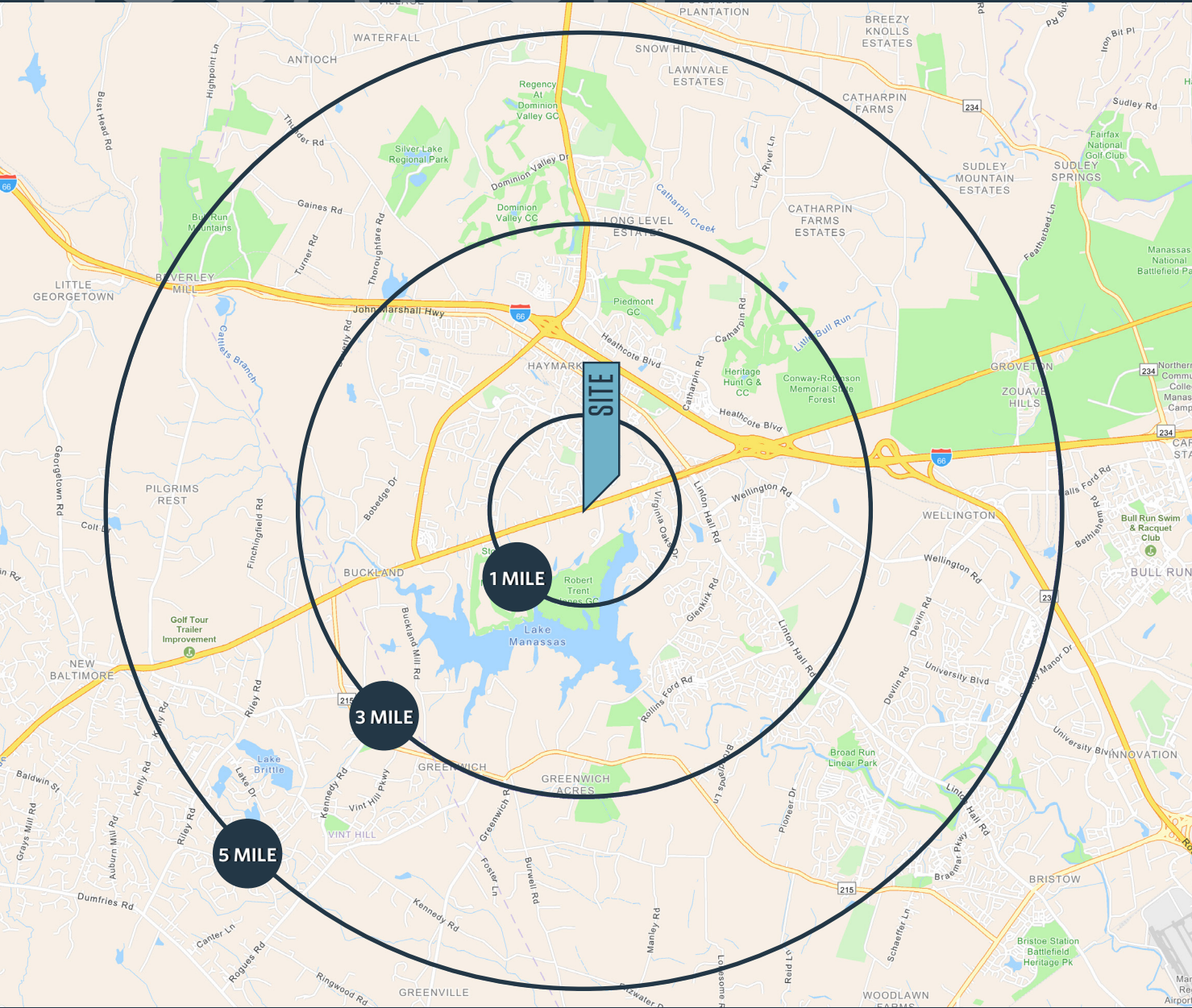
bkelly@klnb.com | 703-268-2706



LOCATION

SHOPS AT LAKE MANASSAS

14809-14825 LEE HWY, GAINESVILLE, VA 20155, PRINCE WILLIAM COUNTY



DEMOGRAPHICS | 2024:

	1-MILE	3-MILE	5-MILE
Population	6,419	54,901	94,682
Daytime Population	2,900	25,605	42,029
Households	2,060	17,426	30,201
Average HH Income	\$177,881	\$194,424	\$201,462

[CLICK TO DOWNLOAD DEMOGRAPHIC REPORT](#)

TRAFFIC COUNTS | 2023:

Lee Hwy 47,924 ADT

BO GALLES

bgalles@klnb.com | 703-268-2712

BILLY KELLY

bkelly@klnb.com | 703-268-2706





SHOPS AT LAKE MANASSAS

14809-14825 LEE HWY, GAINESVILLE, VA 20155, PRINCE WILLIAM COUNTY

FOR MORE INFORMATION, PLEASE CONTACT:

BO GALLES

bgalles@klnb.com

703-268-2712

BILLY KELLY

bkelly@klnb.com

703-268-2706

8065 Leesburg Pike, Suite 700, Tysons, VA 22182

.....

klnb.com



[instagram.com/klnbcre](https://www.instagram.com/klnbcre)



[linkedin.com/company/klnb](https://www.linkedin.com/company/klnb)



[facebook.com/KLNBCRE](https://www.facebook.com/KLNBCRE)

[CLICK TO VIEW PROPERTY WEBSITE](#)

While we have no reason to doubt the accuracy of any of the information supplied, we cannot, and do not, guarantee its accuracy. All information should be independently verified prior to a purchase or lease of the property. We are not responsible for errors, omissions, misuse, or misinterpretation of information contained herein and make no warranty of any kind, express or implied, with respect to the property or any other matters.