

# 9030 RED BRANCH RD

Columbia, Maryland 21045  
Howard County

**NEW LISTING!**



**FOR LEASE**

## AVAILABLE SUITES

- Suite 150: 1,808 SF
- Suite 190: 1,556 SF
- Suite 200: 2,578 SF
- Suite 210: ±3,000 - 5,975 SF
- Suite 230: 810 SF

## BUILDING HIGHLIGHTS

- Total Building Size: 20,325 square feet
- Ample parking
- Easy access to Rt. 108, Rt. 29, Rt. 100, Rt. 175 & I-95
- Conveniently located and close to Circuit Court of Howard County
- Elevator served and ADA compliant

## NEARBY AMENITIES



**POPEYES**



**Abby Glassberg**  
aglassberg@klnb.com  
443-574-1433

**Austin Eber**  
aeber@klnb.com  
443-574-1414

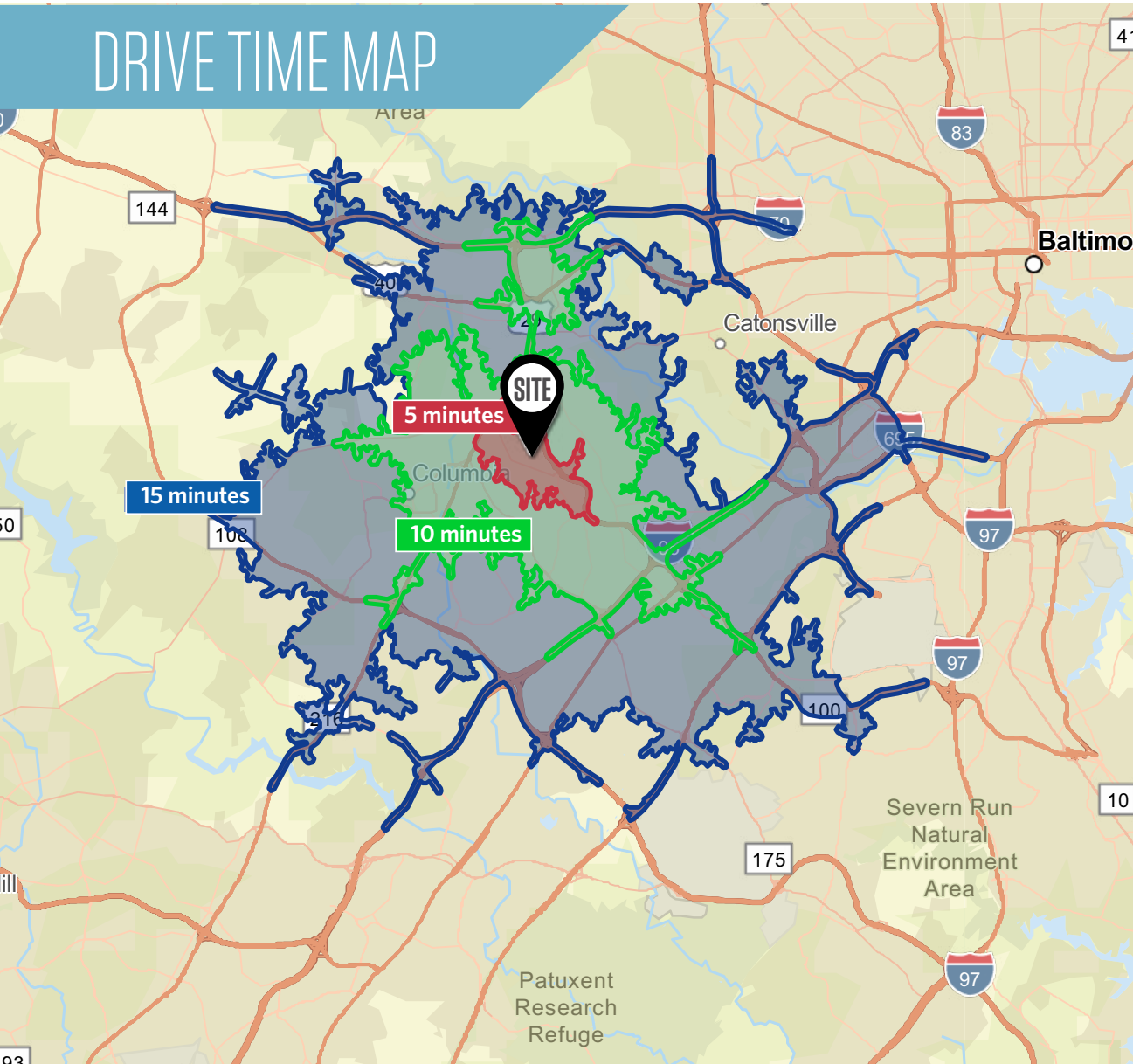
9881 Broken Land Pkwy, #300  
Columbia, MD 21046  
**klnb.com**



# 9030 RED BRANCH RD

Columbia, Maryland 21045  
Howard County

## DRIVE TIME MAP



## DEMOGRAPHICS | 3 MILE



**POPULATION**  
11,881



**HOUSEHOLDS**  
4,423



**AVERAGE  
HH INCOME**  
\$173,052



**MEDIAN  
AGE**  
39.9



**DISPOSABLE  
INCOME**  
\$115,360



**MEDIUM  
NETWORTH**  
\$494,898

**Abby Glassberg**  
aglassberg@klnb.com  
443-574-1433

**Austin Eber**  
aeber@klnb.com  
443-574-1414

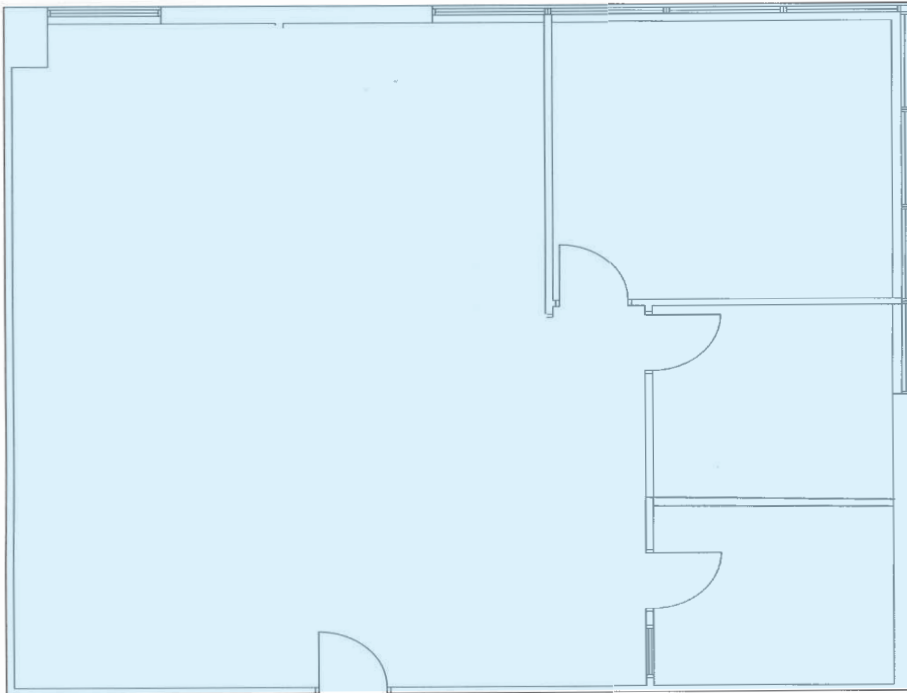
9881 Broken Land Pkwy, #300  
Columbia, MD 21046  
[klnb.com](http://klnb.com)



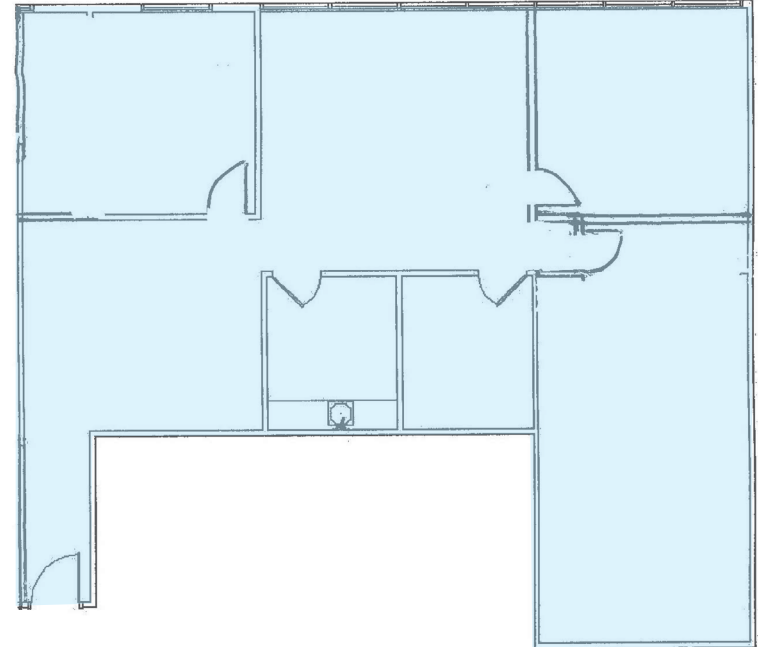
# 9030 RED BRANCH RD

Columbia, Maryland 21045  
Howard County

**Suite 150**  
1,808 SF



**Suite 190**  
1,556 SF



FLOOR PLANS

**Abby Glassberg**  
aglassberg@klnb.com  
443-574-1433

**Austin Eber**  
aeber@klnb.com  
443-574-1414

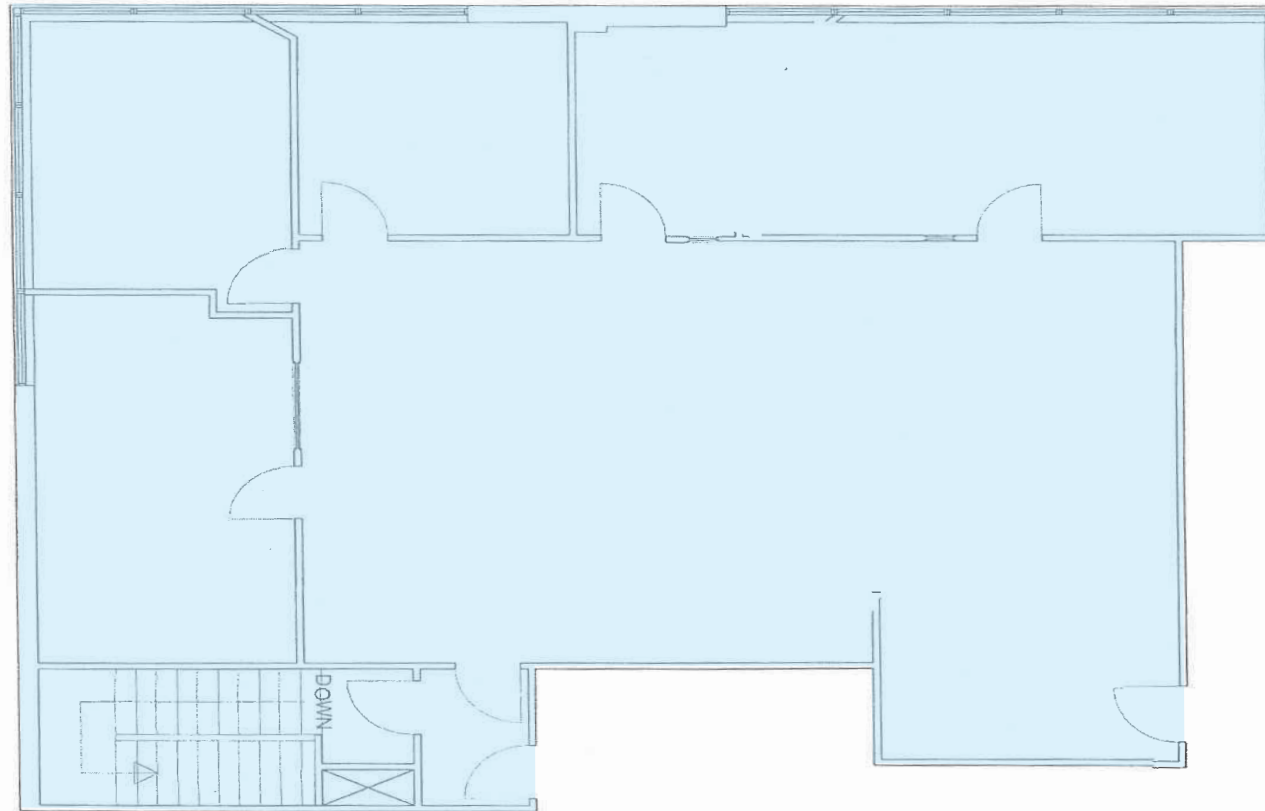
9881 Broken Land Pkwy, #300  
Columbia, MD 21046  
**klnb.com**

**NAI** klnb

# 9030 RED BRANCH RD

Columbia, Maryland 21045  
Howard County

**Suite 200**  
2,578 SF



## FLOOR PLANS

**Abby Glassberg**  
aglassberg@klnb.com  
443-574-1433

**Austin Eber**  
aeber@klnb.com  
443-574-1414

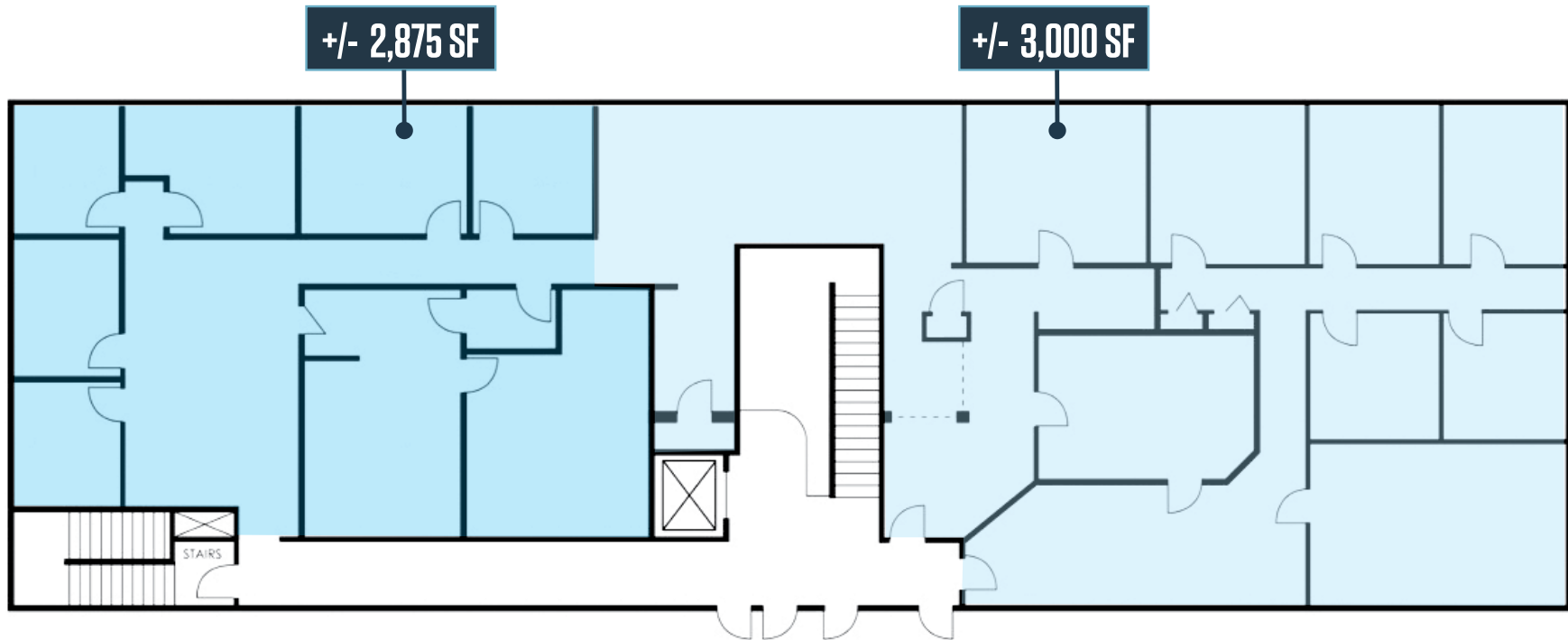
9881 Broken Land Pkwy, #300  
Columbia, MD 21046  
**klnb.com**

**NAI**klnb

# 9030 RED BRANCH RD

Columbia, Maryland 21045  
Howard County

**Suite 210**  
+/- 3,000 - 5,975 SF



FLOOR PLAN

**Abby Glassberg**  
aglassberg@klnb.com  
443-574-1433

**Austin Eber**  
aeber@klnb.com  
443-574-1414

9881 Broken Land Pkwy, #300  
Columbia, MD 21046  
[klnb.com](http://klnb.com)



# 9030 RED BRANCH RD

Columbia, Maryland 21045  
Howard County



PHOTOS

**Abby Glassberg**  
aglassberg@klnb.com  
443-574-1433

**Austin Eber**  
aeber@klnb.com  
443-574-1414

9881 Broken Land Pkwy, #300  
Columbia, MD 21046  
**klnb.com**



# 9030 RED BRANCH RD

Columbia, Maryland 21045  
Howard County



Abby Glassberg  
aglassberg@klnb.com  
443-574-1433

Austin Eber  
aeber@klnb.com  
443-574-1414

9881 Broken Land Pkwy, #300  
Columbia, MD 21046  
klnb.com



# 9030 RED BRANCH RD

Columbia, Maryland 21045  
Howard County

[CLICK TO VIEW PROPERTY WEBSITE](#)

For More Information, Please Contact:

**Abby Glassberg**

aglassberg@klnb.com  
443-574-1433

**Austin Eber**

aeber@klnb.com  
443-574-1414

9881 Broken Land Parkway, Suite 300  
Columbia, MD 21046

[klnb.com](http://klnb.com)



[instagram.com/klnbcre](https://www.instagram.com/klnbcre)



[linkedin.com/company/klnb](https://www.linkedin.com/company/klnb)



[facebook.com/KLNBCRE](https://www.facebook.com/KLNBCRE)

While we have no reason to doubt the accuracy of any of the information supplied, we cannot, and do not, guarantee its accuracy. All information should be independently verified prior to a purchase or lease of the property. We are not responsible for errors, omissions, misuse, or misinterpretation of information contained herein and make no warranty of any kind, express or implied, with respect to the property or any other matters.

**NAI** klnb