

# OAKLAND RIDGE INDUSTRIAL PARK

8910 - 8940 Route 108, Columbia, MD 21045  
Howard County



## FOR LEASE

## AVAILABLE SUITES

- **8920 Route 108**
  - » Suites B - D: 24,473 SF; Dock and drive-in loading
- **8940 Route 108**
  - » Suites F - G: 3,967 SF up to 7,394 SF; 90% office; Two (2) docks and two (2) ramps

- Conveniently located near Downtown Columbia
- Excellent visibility on Route 108
- Easy access to Routes 29, 100, 32 and I-95
- Minutes away from Columbia Mall, Howard Community College, Howard County General Hospital, Fort Meade & BWI Airport
- Loading: Dock high and drive-in available
- Dorsey MARC Station (Camden Line) - 6.9 miles
- Signage opportunity
- Ample free parking

## NEARBY AMENITIES



Spence Daw  
sdaw@klnb.com  
443-574-1429

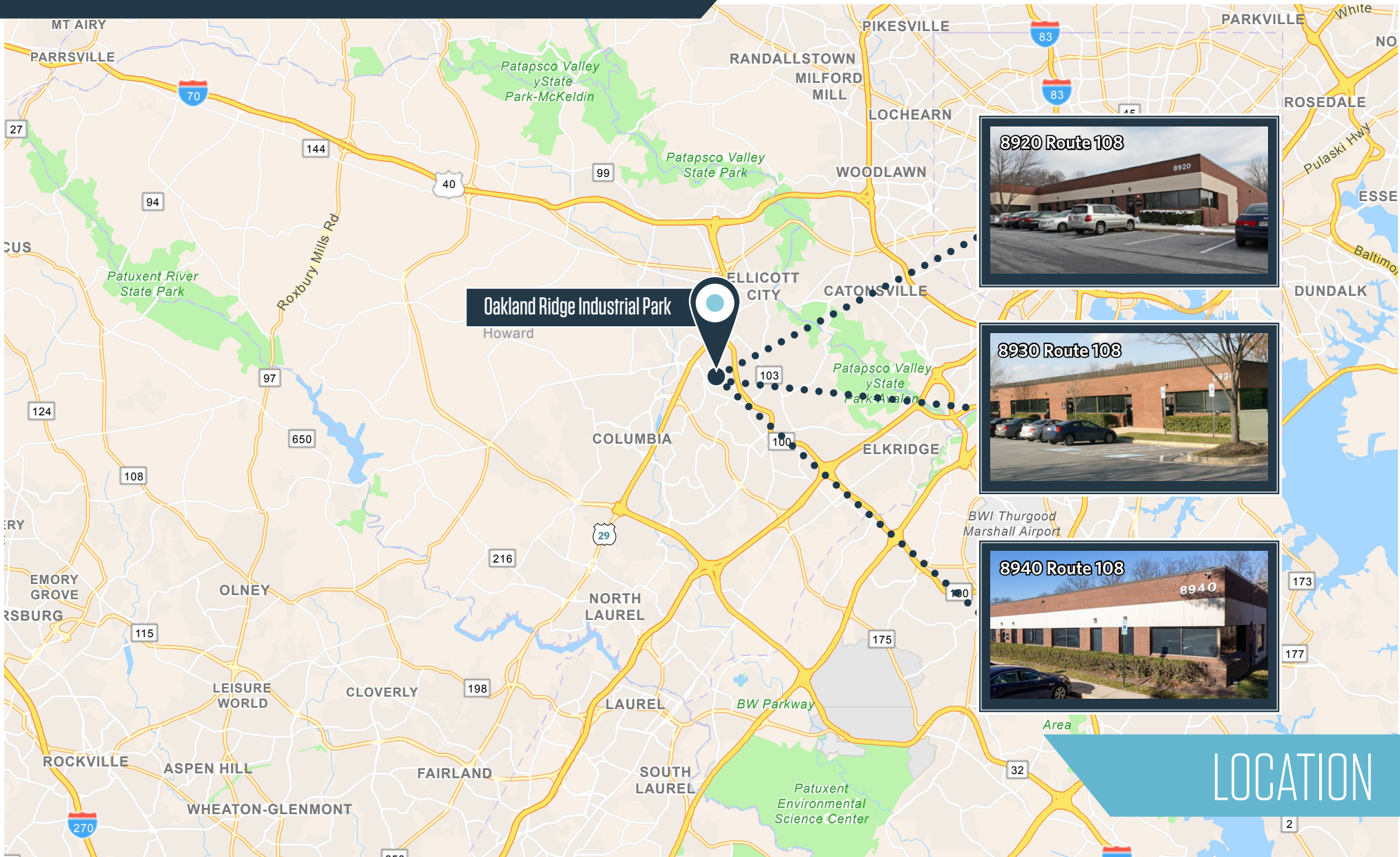
David J. Fritz, CCIM, SIOR  
dfritz@klnb.com  
443-574-14120

9881 Broken Land Pkwy, #300  
Columbia, MD 21043  
klnb.com

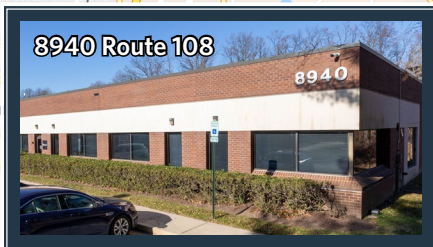
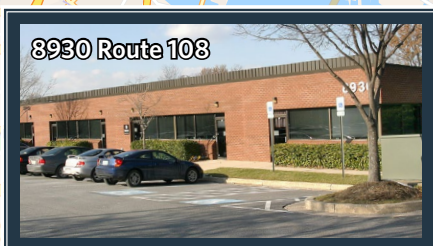
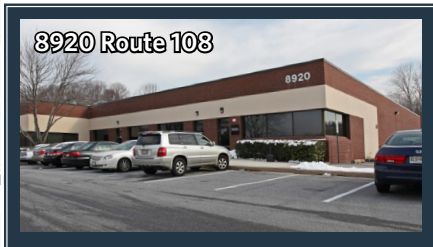


# OAKLAND RIDGE INDUSTRIAL PARK

8910 - 8940 Route 108, Columbia, MD 21045  
Howard County



Oakland Ridge Industrial Park



LOCATION

Spence Daw  
sdaw@klnb.com  
443-574-1429

David J. Fritz, CCIM, SIOR  
dfritz@klnb.com  
443-574-14120

9881 Broken Land Pkwy, #300  
Columbia, MD 21043  
klnb.com

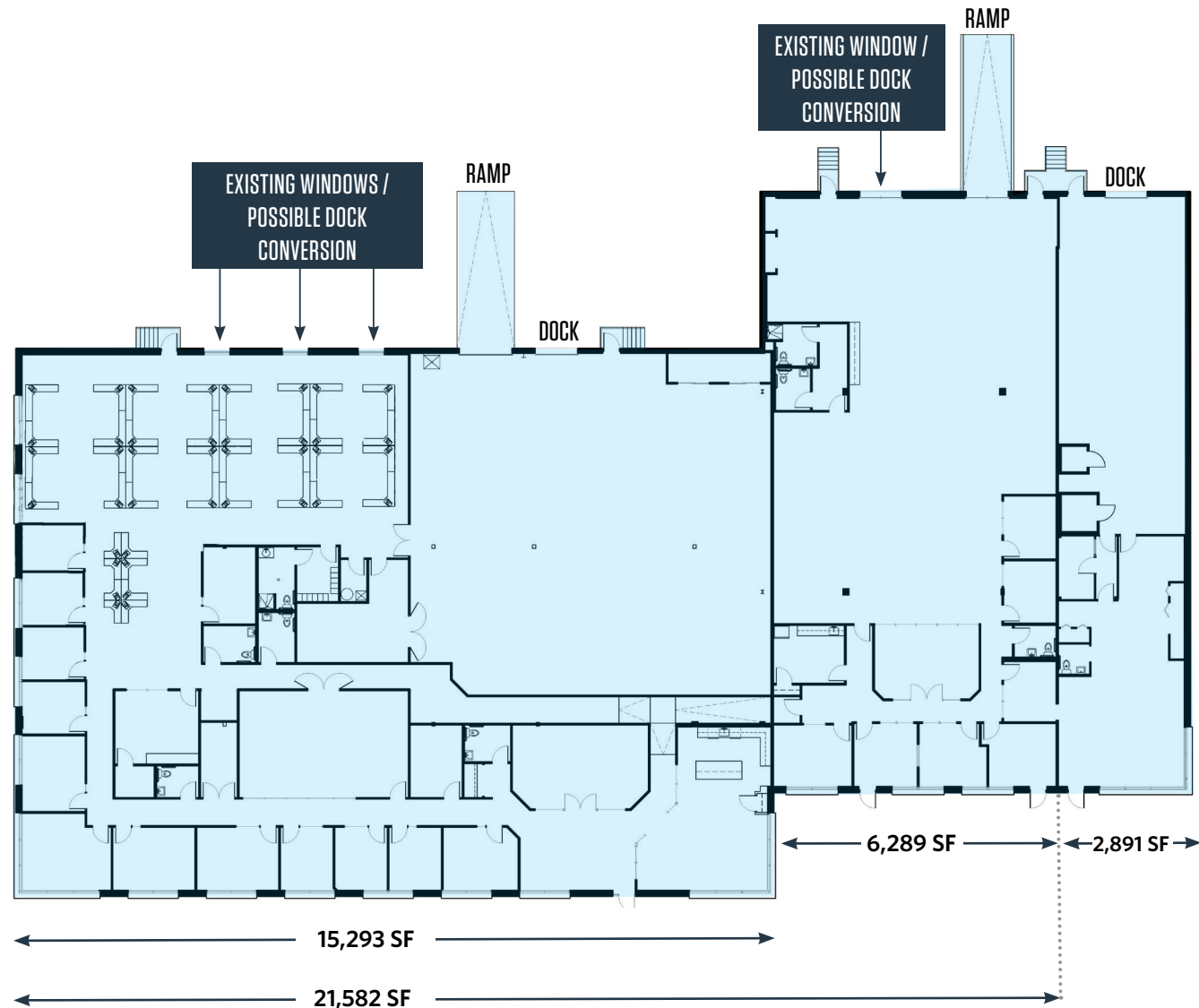


# OAKLAND RIDGE INDUSTRIAL PARK

8910 - 8940 Route 108, Columbia, MD 21045  
Howard County

**FREE STANDING**  
8920 Route 108  
**SUITES B - D**  
24,473 SF

- » 24,473 SF
- » Dock & drive-in loading



Spence Daw  
sdaw@klnb.com  
443-574-1429

David J. Fritz, CCIM, SIOR  
dfritz@klnb.com  
443-574-14120

9881 Broken Land Pkwy, #300  
Columbia, MD 21043  
klnb.com

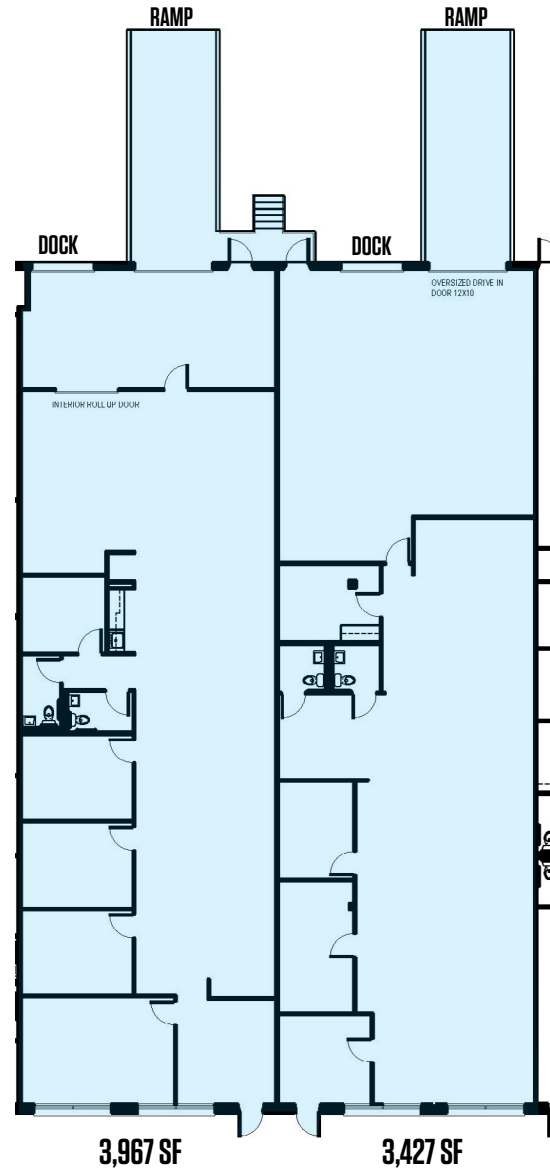


# OAKLAND RIDGE INDUSTRIAL PARK

8910 - 8940 Route 108, Columbia, MD 21045  
Howard County

8940 Route 108  
SUITES F & G  
7,394 SF

- » 3,967 SF up to 7,394 SF of office/flex
- » Two (2) docks & two (2) ramps



Spence Daw  
sdaw@klnb.com  
443-574-1429

David J. Fritz, CCIM, SIOR  
dfritz@klnb.com  
443-574-14120

9881 Broken Land Pkwy, #300  
Columbia, MD 21043  
klnb.com



# OAKLAND RIDGE INDUSTRIAL PARK

8910 - 8940 Route 108, Columbia, MD 21045  
Howard County



Spence Daw  
sdaw@klnb.com  
443-574-1429

David J. Fritz, CCIM, SIOR  
dfritz@klnb.com  
443-574-14120

9881 Broken Land Pkwy, #300  
Columbia, MD 21043  
klnb.com



# OAKLAND RIDGE INDUSTRIAL PARK

8910 - 8940 Route 108, Columbia, MD 21045  
Howard County

[CLICK TO VIEW PROPERTY WEBSITE](#)

For More Information, Please Contact:

**Spence Daw**

sdaw@klnb.com  
443-574-1429

**David J. Fritz, CCIM, SIOR**

dfritz@klnb.com  
443-574-1410

9881 Broken Land Parkway, Suite 300  
Columbia, MD 21046

[klnb.com](http://klnb.com)



[instagram.com/klnbcre](https://www.instagram.com/klnbcre)



[linkedin.com/company/klnb](https://www.linkedin.com/company/klnb)



[facebook.com/KLNBcre](https://www.facebook.com/KLNBcre)

While we have no reason to doubt the accuracy of any of the information supplied, we cannot, and do not, guarantee its accuracy. All information should be independently verified prior to a purchase or lease of the property. We are not responsible for errors, omissions, misuse, or misinterpretation of information contained herein and make no warranty of any kind, express or implied, with respect to the property or any other matters.

