



BUILDING INFORMATION

- Type: Office Condo
- RBA: 47,234 SF
- Stories: 3
- Class: B
- Renovated: 2020
- Construction: Masonry
- Parking: Surface - 210 (4.45/1,000 SF)
- Walk Score®: Car-Dependent (42)
Transit Score®: Some Transit (39)

NEW RENOVATION

- Roof
- Parking Lot
- Updated Restrooms
- Elevators
- Entry Door
- Directory
- Sprinkler Systems
- Individual HVAC Units

KENNETH FELLOWS

kfellows@klnb.com | 301-222-0210

ROBERT PUGH

rpugh@klnb.com | 301-222-0211

KEIRY MARTINEZ

kmartinez@klnb.com | 703-334-5629

AERIAL

4 TAFT COURT

ROCKVILLE, MARYLAND 20850



KENNETH FELLOWS

kfellows@klnb.com | 301-222-0210

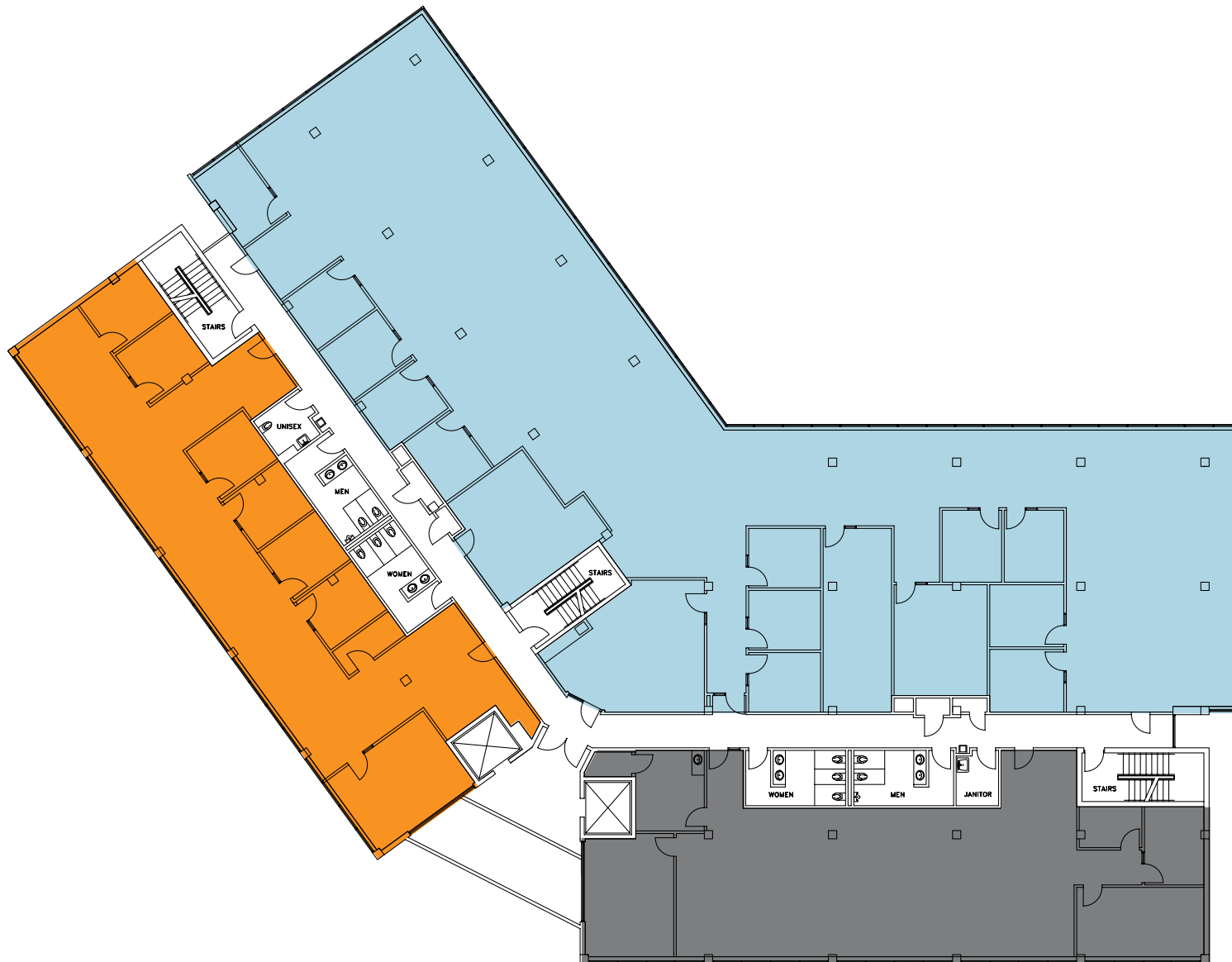
ROBERT PUGH

rpugh@klnb.com | 301-222-0211

KEIRY MARTINEZ

kmartinez@klnb.com | 703-334-5629

klnb



2ND FLOOR

 SUITE 200

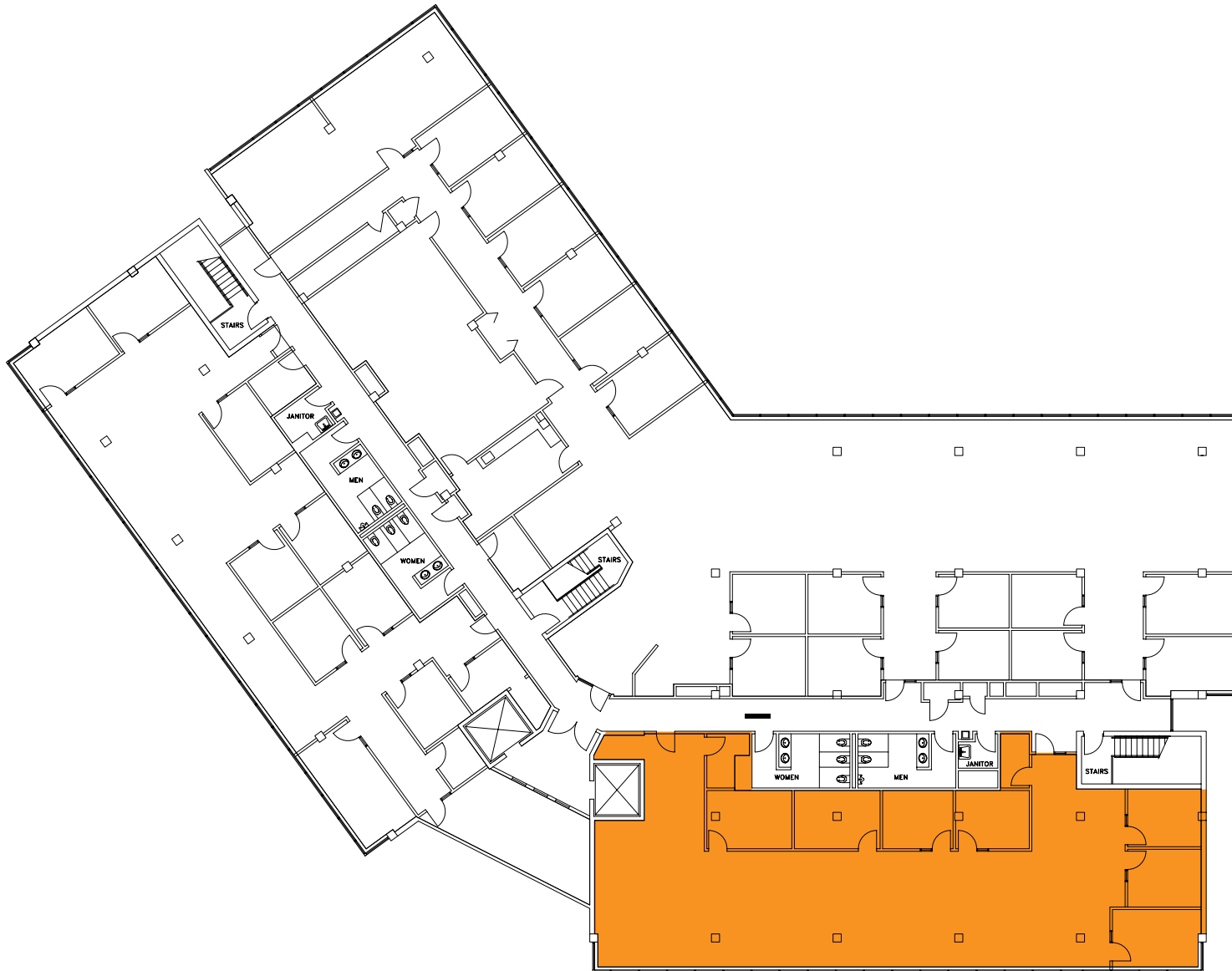
10,384 SF

 SUITE 250

3,587 SF

 SUITE 275

3,583 SF



3RD FLOOR

 SUITE 375

4,140 SF

PHOTOS

4 TAFT COURT

ROCKVILLE, MARYLAND 20850



KENNETH FELLOWS

kfellows@klnb.com | 301-222-0210

ROBERT PUGH

rpugh@klnb.com | 301-222-0211

KEIRY MARTINEZ

kmartinez@klnb.com | 703-334-5629





4 TAFT COURT

ROCKVILLE, MARYLAND 20850

FOR MORE INFORMATION, PLEASE CONTACT:

KENNETH FELLOWS

kfellows@klnb.com
301-222-0210

ROBERT PUGH

rpugh@klnb.com
301-222-0211

KEIRY MARTINEZ

kmartinez@klnb.com
703-334-5629

12435 Park Potomac Ave, Suite 250, Rockville, MD, 20854

.....
klnb.com

 facebook.com/KLNBCRE

 [@KLNBCRE](https://twitter.com/KLNBCRE)

 linkedin.com/company/klnb

 instagram.com/klnbcre

CLICK TO VIEW PROPERTY WEBSITE

While we have no reason to doubt the accuracy of any of the information supplied, we cannot, and do not, guarantee its accuracy. All information should be independently verified prior to a purchase or lease of the property. We are not responsible for errors, omissions, misuse, or misinterpretation of information contained herein and make no warranty of any kind, express or implied, with respect to the property or any other matters.