

# PARKLAWN PLAZA

11821 Parklawn Drive | Rockville, MD

UNDER NEW OWNERSHIP



FOR LEASE

## PROPERTY HIGHLIGHTS

### Building Specifications

- Building Type: Office
- Year Built: 1986
- Building Size: 40,449 SF
- Building Height: 4 Stories  
(3 above grade; 1 lower level; with windows)

### Features

- Ample surface parking
- Public transportation is available through Montgomery County's "Ride On" program
- Abundance of amenities, food service options and retail centers within walking distance

### Location

- Quick access to I-270 and I-495
- Two WMATA Metro stops (Twinbrook & North Bethesda) are within 2 miles

**Kenneth Fellows**  
kfellows@klnb.com  
301-222-0210

**Robert Pugh**  
rpugh@klnb.com  
301-222-0211

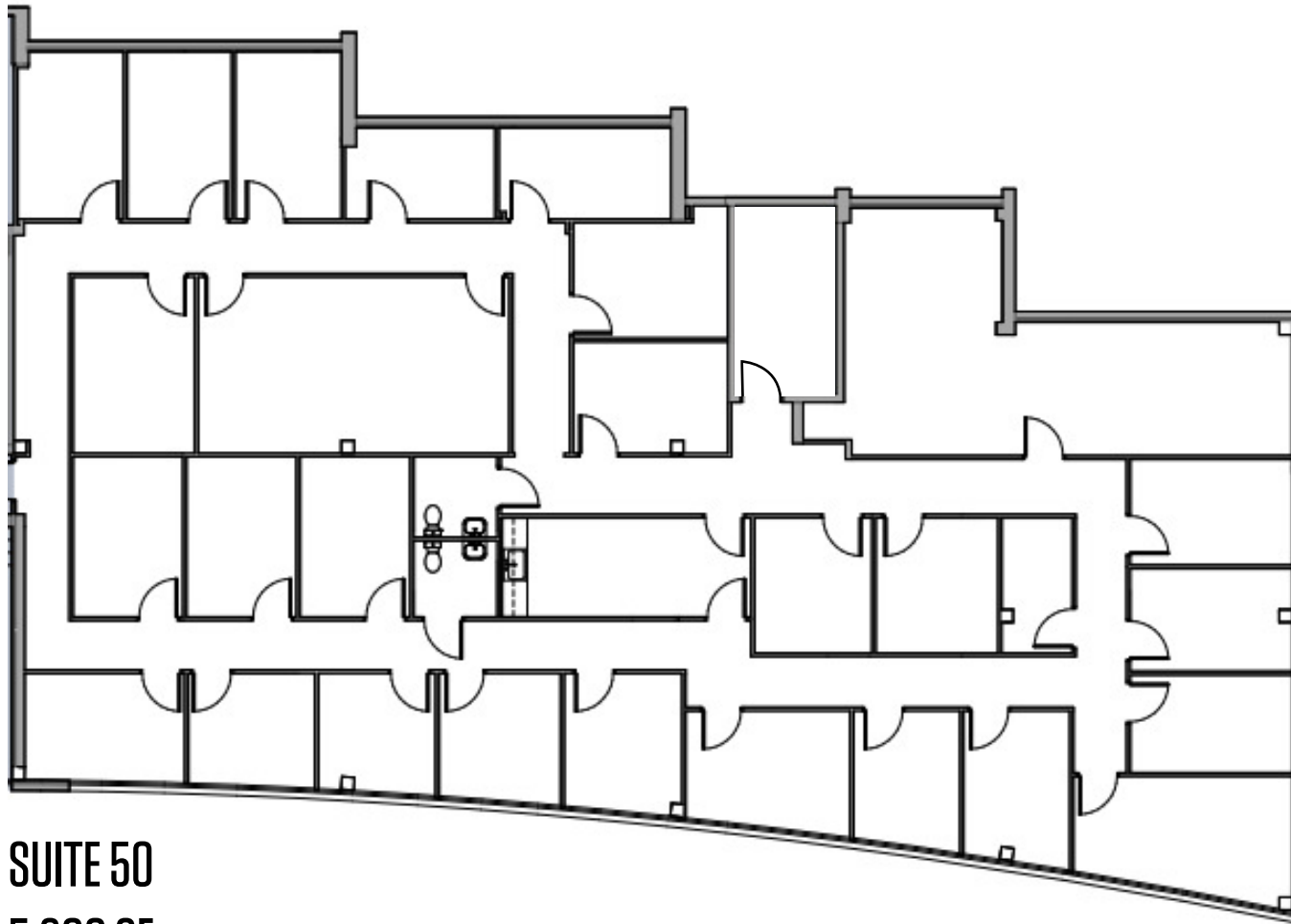
**Keiry Martinez**  
kmartinez@klnb.com  
703-334-5629

12435 Park Potomac Ave, Suite 250,  
Rockville, MD, 20854  
**klnb.com**



# PARKLAWN PLAZA

11821 Parklawn Drive | Rockville, MD



**SUITE 50**

**5,800 SF**

**Kenneth Fellows**  
kfellows@klnb.com  
301-222-0210

**Robert Pugh**  
rpugh@klnb.com  
301-222-0211

**Keiry Martinez**  
kmartinez@klnb.com  
703-334-5629

12435 Park Potomac Ave, Suite 250,  
Rockville, MD, 20854  
[klnb.com](http://klnb.com)



# PARKLAWN PLAZA

11821 Parklawn Drive | Rockville, MD



**SUITE 224**  
950 SF

**SUITE 250**  
2,801 SF

**Kenneth Fellows**  
kfellows@klnb.com  
301-222-0210

**Robert Pugh**  
rpugh@klnb.com  
301-222-0211

**Keiry Martinez**  
kmartinez@klnb.com  
703-334-5629

12435 Park Potomac Ave, Suite 250,  
Rockville, MD, 20854  
[klnb.com](http://klnb.com)



# PARKLAWN PLAZA

11821 Parklawn Drive | Rockville, MD

[CLICK TO VIEW PROPERTY WEBSITE](#)

For More Information, Please Contact:

**Kenneth Fellows**

kfellows@klnb.com

301-222-0210

**Robert Pugh**

rpugh@klnb.com

301-222-0211

**Keiry Martinez**

kmartinez@klnb.com

703-334-5629

12435 Park Potomac Ave, Suite 250,  
Rockville, MD, 20854

[klnb.com](http://klnb.com)



[instagram.com/klnbcre](https://www.instagram.com/klnbcre)



[linkedin.com/company/klnb](https://www.linkedin.com/company/klnb)



[facebook.com/KLNBCRE](https://www.facebook.com/KLNBCRE)

While we have no reason to doubt the accuracy of any of the information supplied, we cannot, and do not, guarantee its accuracy. All information should be independently verified prior to a purchase or lease of the property. We are not responsible for errors, omissions, misuse, or misinterpretation of information contained herein and make no warranty of any kind, express or implied, with respect to the property or any other matters.

**Kenneth Fellows**

kfellows@klnb.com

301-222-0210

**Robert Pugh**

rpugh@klnb.com

301-222-0211

**Keiry Martinez**

kmartinez@klnb.com

703-334-5629

12435 Park Potomac Ave, Suite 250,  
Rockville, MD, 20854

[klnb.com](http://klnb.com)

**klnb**