

CALVERTON OFFICE PARK



FOR LEASE

PROPERTY HIGHLIGHTS

- **Total Building:** 45,000 square feet
- **Stories:** 3 stories
- **Available Space:**
 - ▶ **Suite 110:** 2,775 SF
 - ▶ **Suite 300:** 14,532 SF (*full floor*)
- **Land Area:** 2.49 acres
- **Parking:** Free surface parking
- **Amenities:** Building signage, banking & daycare



INTERIOR PHOTOS



DISTANCES	
I-955 mi
Route 29	1.9 mi
I-495	2.6 mi

KENNETH FELLOWS

kfellows@klnb.com | 301-222-0210



ROBERT PUGH

rpugh@klnb.com | 301-222-0211

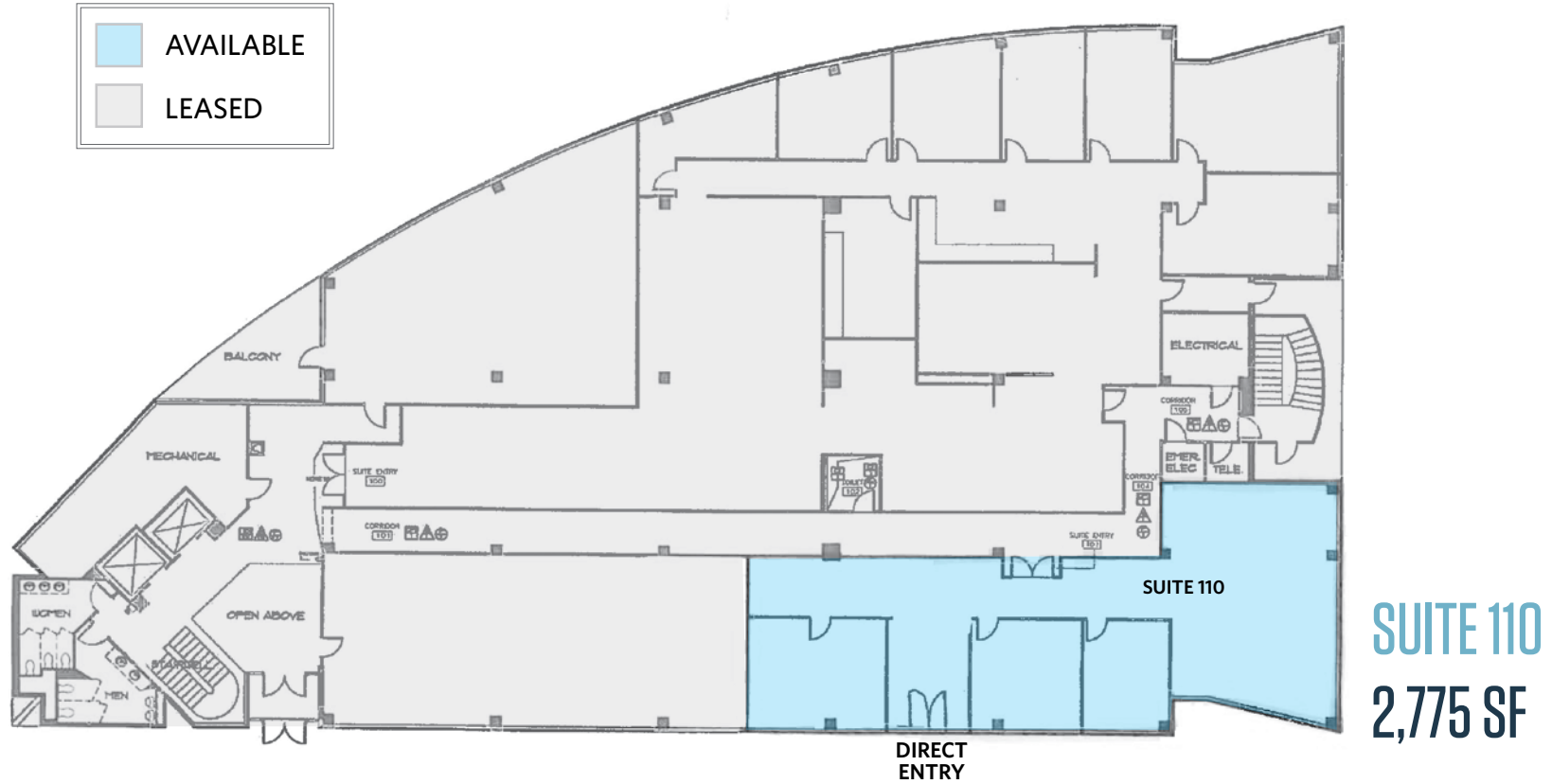
KEIRY MARTINEZ

kmartinez@klnb.com | 703-334-5629

FLOOR PLAN

11750 BELTSVILLE DRIVE

11750 Beltsville Drive, Beltsville, MD 20705



KENNETH FELLOWS

kfellows@klnb.com | 301-222-0210

ROBERT PUGH

rpugh@klnb.com | 301-222-0211

KEIRY MARTINEZ

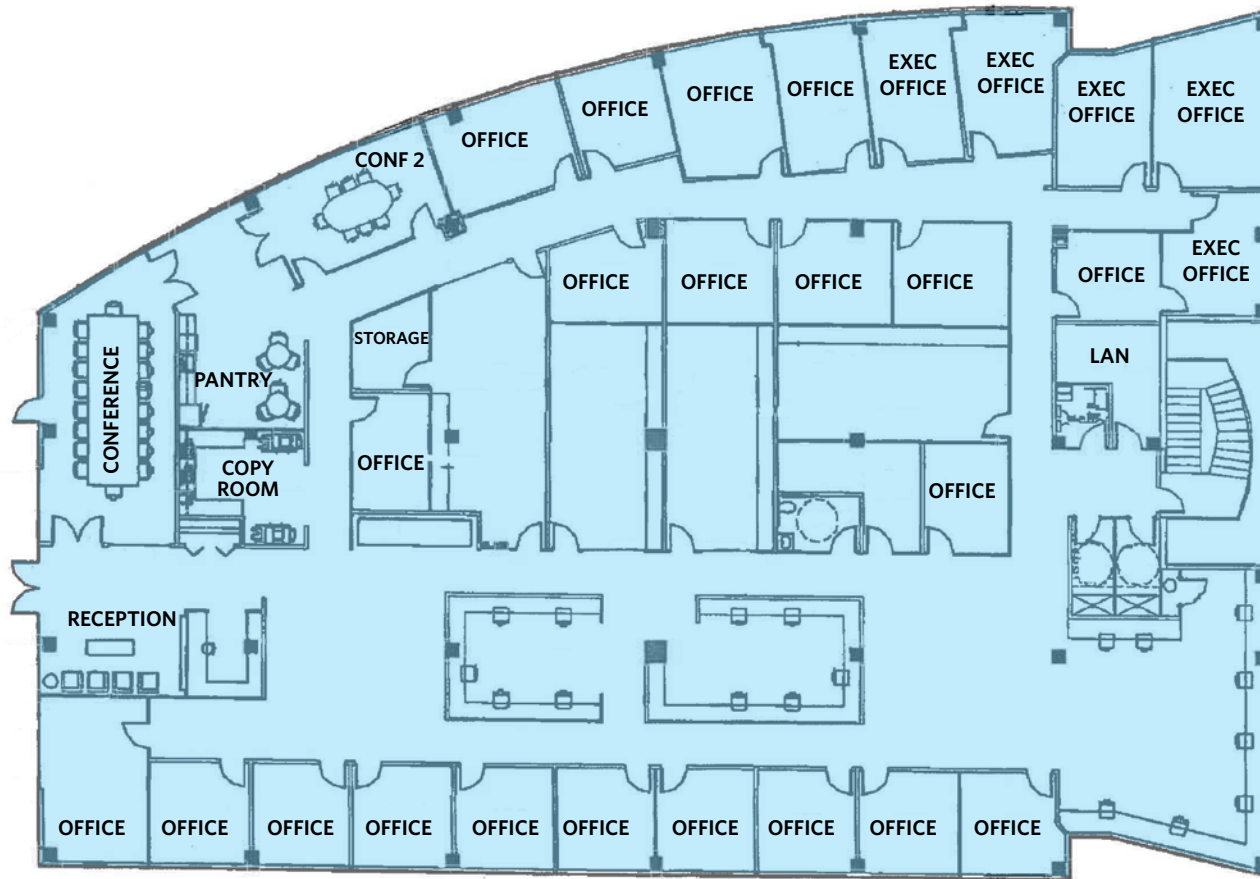
kmartinez@klnb.com | 703-334-5629

klnb.com

FLOOR PLAN

11750 BELTSVILLE DRIVE

11750 Beltsville Drive, Beltsville, MD 20705



SUITE 300
14,532 SF

KENNETH FELLOWS

kfellows@klnb.com | 301-222-0210

ROBERT PUGH

rpugh@klnb.com | 301-222-0211

KEIRY MARTINEZ

kmartinez@klnb.com | 703-334-5629

klnb.com



11750 BELTSVILLE DRIVE

11750 Beltsville Drive, Beltsville, MD 20705

FOR MORE INFORMATION, PLEASE CONTACT:

KENNETH FELLOWS

kfellows@klnb.com
301-222-0210

ROBERT PUGH

rpugh@klnb.com
301-222-0211

KEIRY MARTINEZ

kmartinez@klnb.com
703-334-5629

12435 Park Potomac Ave, Suite 250, Rockville, MD, 20854

.....

klnb.com

 facebook.com/KLNBCRE

 [@KLNBCRE](https://twitter.com/KLNBCRE)

 linkedin.com/company/klnb

 instagram.com/klnbcre

While we have no reason to doubt the accuracy of any of the information supplied, we cannot, and do not, guarantee its accuracy. All information should be independently verified prior to a purchase or lease of the property. We are not responsible for errors, omissions, misuse, or misinterpretation of information contained herein and make no warranty of any kind, express or implied, with respect to the property or any other matters.