



JOIN THESE RETAILERS



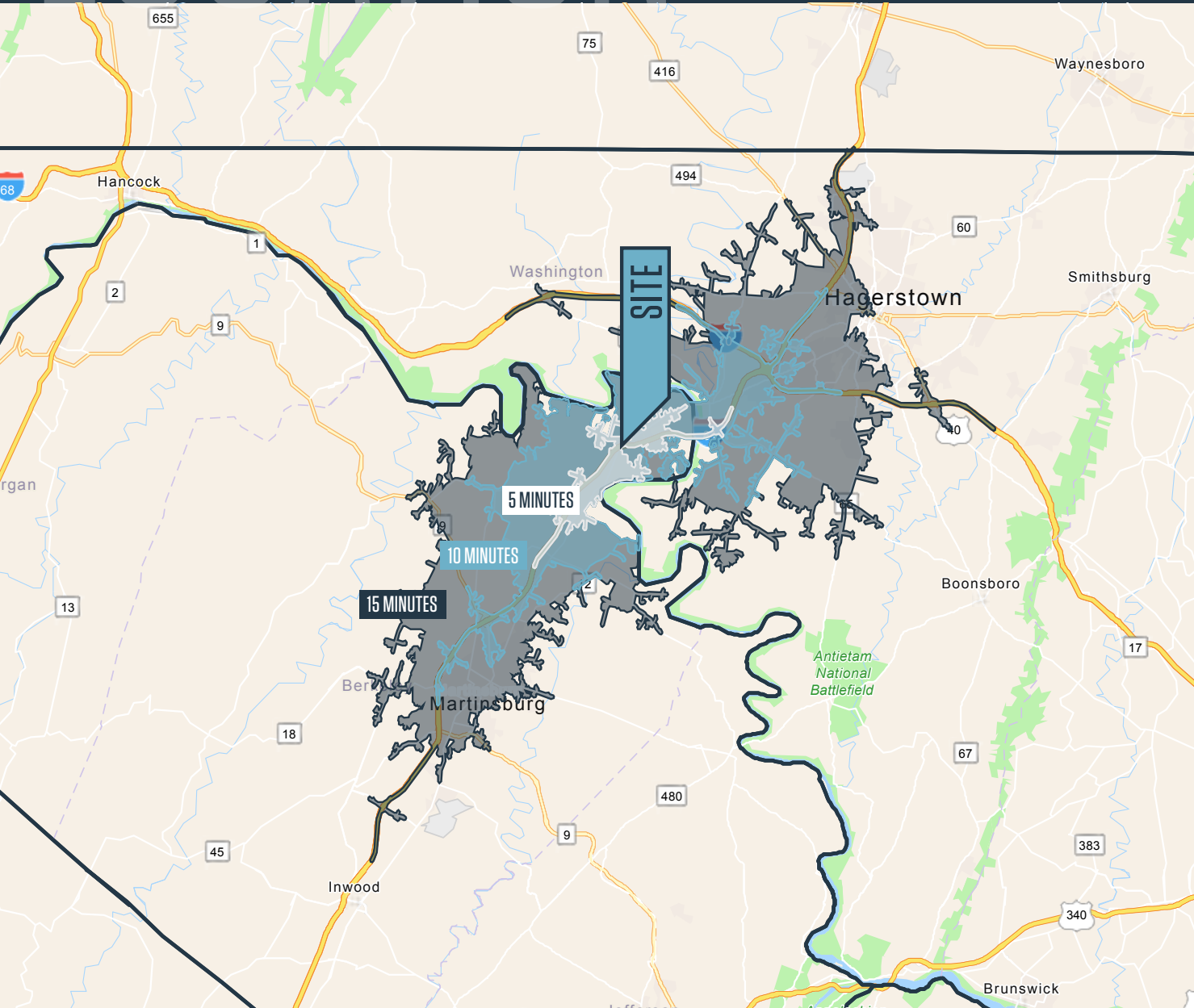
PAD SITES & NEW RETAIL AVAILABLE OFF I-81 [49,764 ADT]

- Join high volume grocery anchored center [existing retail is 100% leased], adjacent to 613 new residential units [308 apartments, 115 single family, and 190 townhomes]
- Three separate pad opportunities available - ideal for fast food, financial institutions and medical
- AVAILABLE: 1,600 SF existing inline space & 1,600 SF former deli
- New retail available next to Food Lion
- Large multi-panel pylon

LOCATION

RIVERSIDE MARKETPLACE

78 WORCHESTER DRIVE, FALLING WATERS, WV 25419, BERKELEY COUNTY



DEMOGRAPHICS | 2024:

5-MINUTES	10-MINUTES	15-MINUTES
Population		
3,879	30,397	110,882
Daytime Population		
2,536	33,268	118,731
Households		
1,554	12,015	44,047
Average HH Income		
\$101,236	\$102,176	\$88,424

[CLICK TO DOWNLOAD DEMOGRAPHIC REPORT](#)

TRAFFIC COUNTS | 2023:

I-81	49,764 ADT
Williamsport Pike	13,310 ADT

JOE FLEISCHMANN, ASSOCIATE BROKER
joef@klnb.com | 703-268-2708

RACHEL KLEIN, SALESPERSON
rklein@klnb.com | 443-632-2087

ERNIE HUETER, PRINCIPAL BROKER
ehueter@klnb.com | 703-268-2713



MARKET

RIVERSIDE MARKETPLACE

78 WORCHESTER DRIVE, FALLING WATERS, WV 25419, BERKELEY COUNTY



JOE FLEISCHMANN, ASSOCIATE BROKER
joef@klnb.com | 703-268-2708

RACHEL KLEIN, SALESPERSON
rklein@klnb.com | 443-632-2087

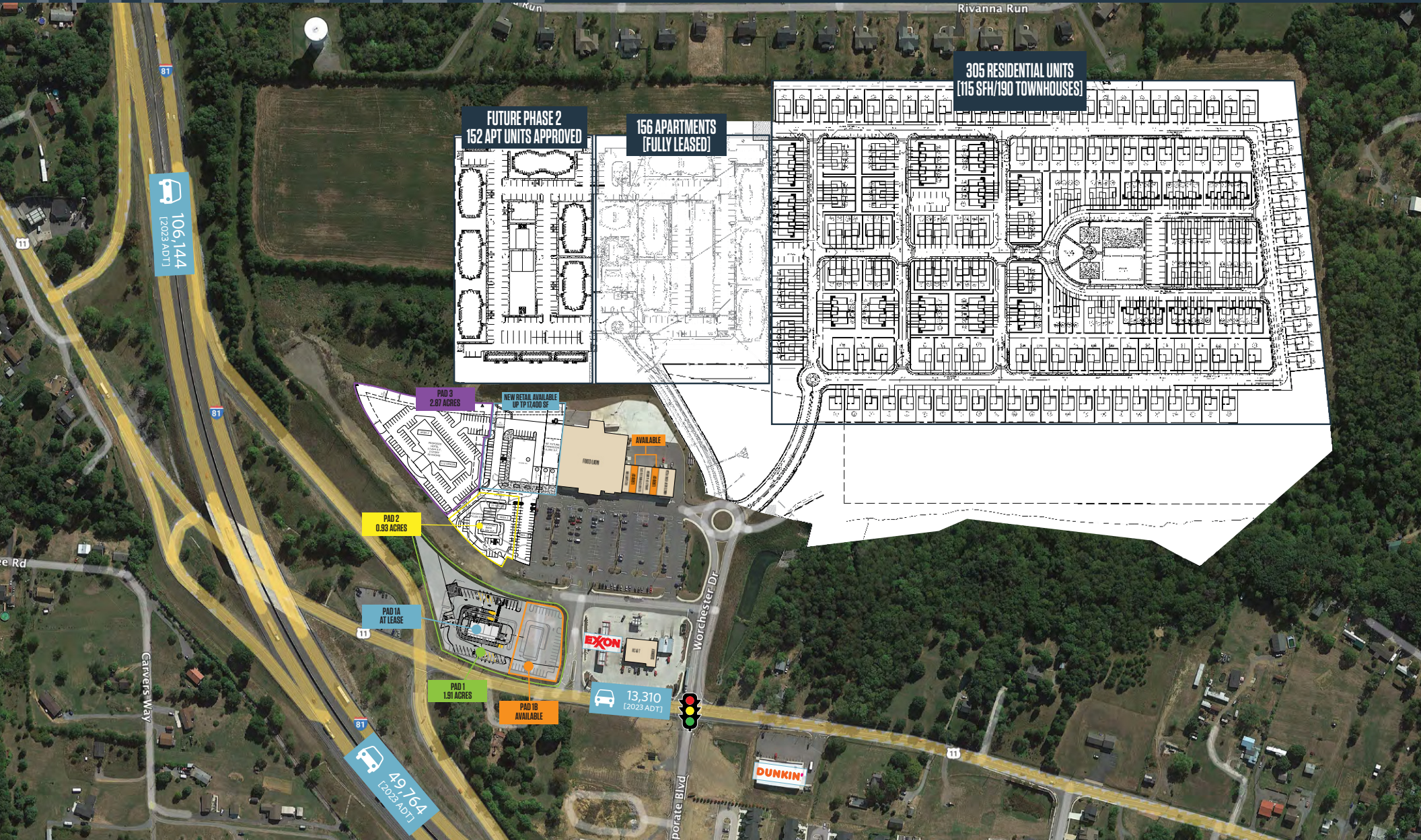
ERNIE HUETER, PRINCIPAL BROKER
ehueter@klnb.com | 703-268-2713



MID-VIEW

RIVERSIDE MARKETPLACE

78 WORCHESTER DRIVE, FALLING WATERS, WV 25419, BERKELEY COUNTY



JOE FLEISCHMANN, ASSOCIATE BROKER
joef@klnb.com | 703-268-2708

RACHEL KLEIN, SALESPERSON
rklein@klnb.com | 443-632-2087

ERNIE HUETER, PRINCIPAL BROKER
ehueter@klnb.com | 703-268-2713



CLOSE-UP

RIVERSIDE MARKETPLACE

78 WORCHESTER DRIVE, FALLING WATERS, WV 25419, BERKELEY COUNTY



JOE FLEISCHMANN, ASSOCIATE BROKER
joef@klnb.com | 703-268-2708

RACHEL KLEIN, SALESPERSON
rklein@klnb.com | 443-632-2087

ERNIE HUETER, PRINCIPAL BROKER
ehueter@klnb.com | 703-268-2713



SITE PLAN

RIVERSIDE MARKETPLACE

78 WORCHESTER DRIVE, FALLING WATERS, WV 25419, BERKELEY COUNTY



JOE FLEISCHMANN, ASSOCIATE BROKER
joef@klnb.com | 703-268-2708

RACHEL KLEIN, SALESPERSON
rklein@klnb.com | 443-632-2087

ERNIE HUETER, PRINCIPAL BROKER
ehueter@klnb.com | 703-268-2713





RIVERSIDE MARKETPLACE

78 WORCHESTER DRIVE, FALLING WATERS, WV 25419, BERKELEY COUNTY

FOR MORE INFORMATION, PLEASE CONTACT:

JOE FLEISCHMANN, ASSOCIATE BROKER

joef@klnb.com | 703-268-2708

RACHEL KLEIN, SALESPERSON

rklein@klnb.com | 443-632-2087

ERNIE HUETER, PRINCIPAL BROKER

ehueter@klnb.com | 703-268-2713

100 West Road, Suite 505, Towson, MD 21204

.....
klnb.com



instagram.com/klnbcre



linkedin.com/company/klnb



facebook.com/KLNBCRE

CLICK TO VIEW PROPERTY WEBSITE

While we have no reason to doubt the accuracy of any of the information supplied, we cannot, and do not, guarantee its accuracy. All information should be independently verified prior to a purchase or lease of the property. We are not responsible for errors, omissions, misuse, or misinterpretation of information contained herein and make no warranty of any kind, express or implied, with respect to the property or any other matters.