



## PROPERTY HIGHLIGHTS

- Year Built: 1988
- Building Height: 3 Stories
- Building Size: 55,422 SF
- Building Class: B
- Parking: 160 Surface

Tech Center 29 is located in eastern Montgomery County with easy access to I-95 and I-495. The property has excellent visibility from Route 29 with attractive landscaping and high window ratio. Constructed in 1988, the property sits on 12.95 acres and offers large floor sizes with compact core, large column spacing, 9 foot ceiling heights and 2 recessed, full height loading docks.

**KENNETH FELLOWS**

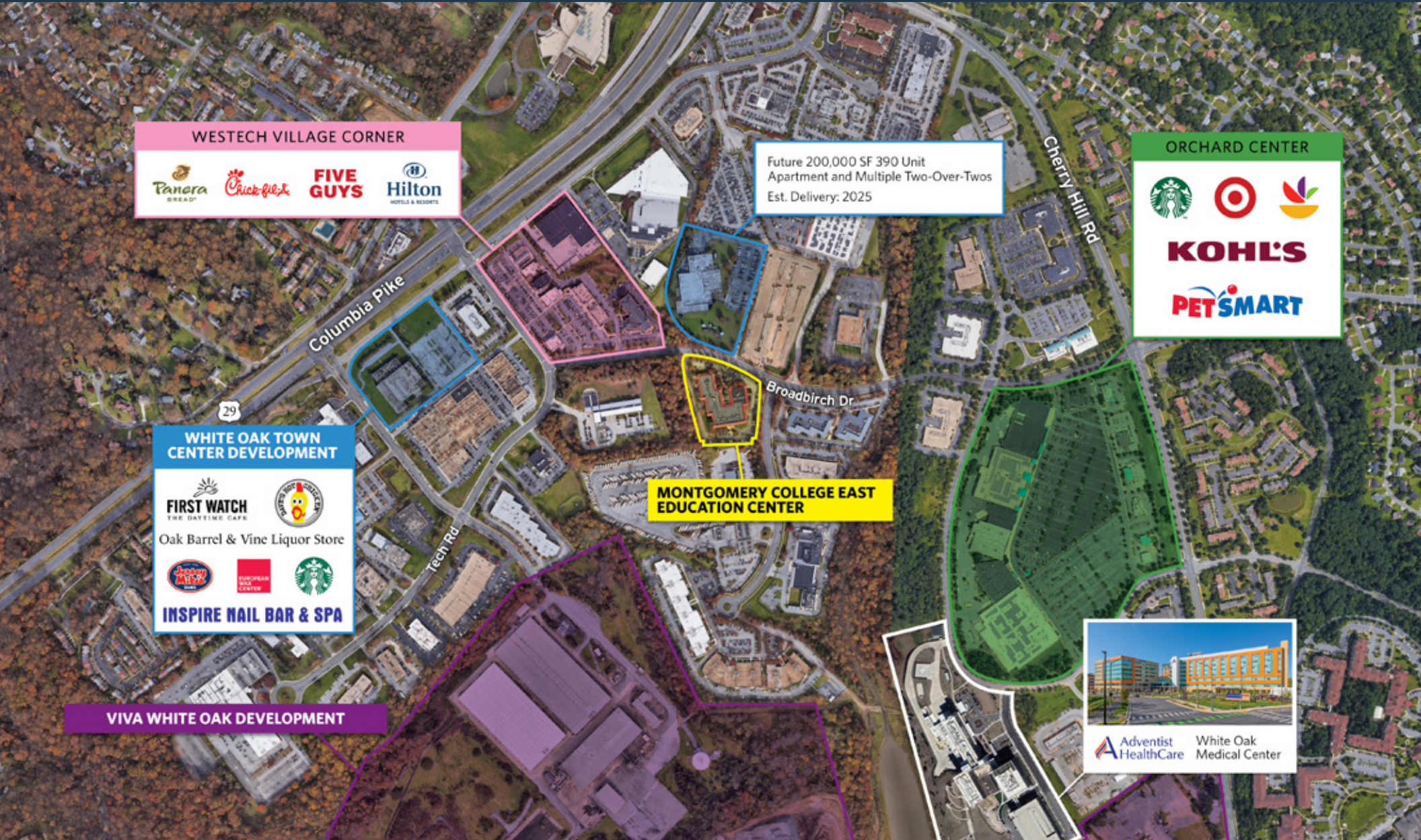
kfellows@klnb.com | 301-222-0210

**ROBERT PUGH**

rpugh@klnb.com | 301-222-0211

**KEIRY MARTINEZ**

kmartinez@klnb.com | 703-334-5629



# CLOSE-UP

# TECH CENTER 29

12200 TECH ROAD, SILVER SPRING, MD 20904



**KENNETH FELLOWS**

kfellows@klnb.com | 301-222-0210

**ROBERT PUGH**

rpugh@klnb.com | 301-222-0211

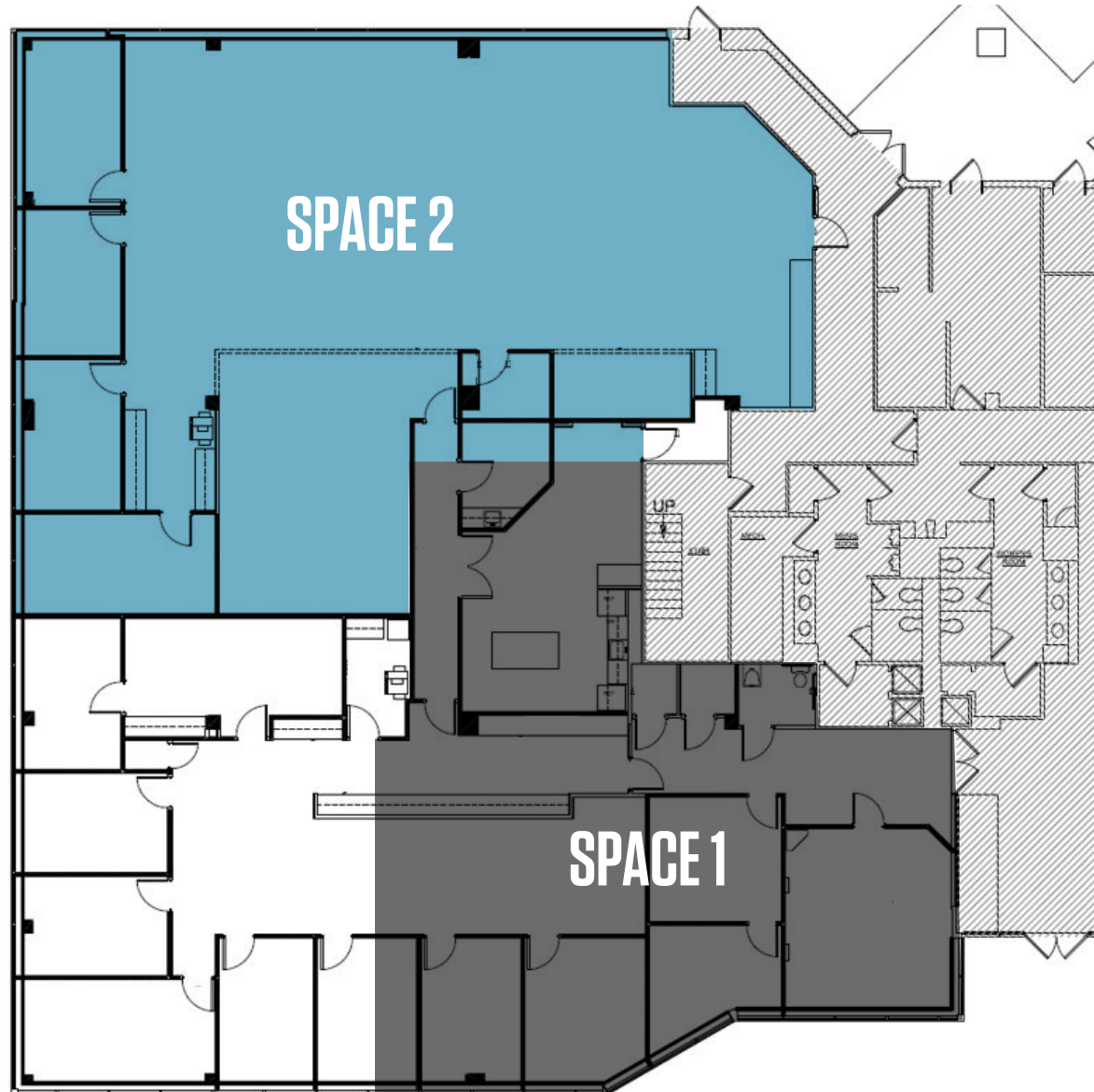
**KEIRY MARTINEZ**

kmartinez@klnb.com | 703-334-5629

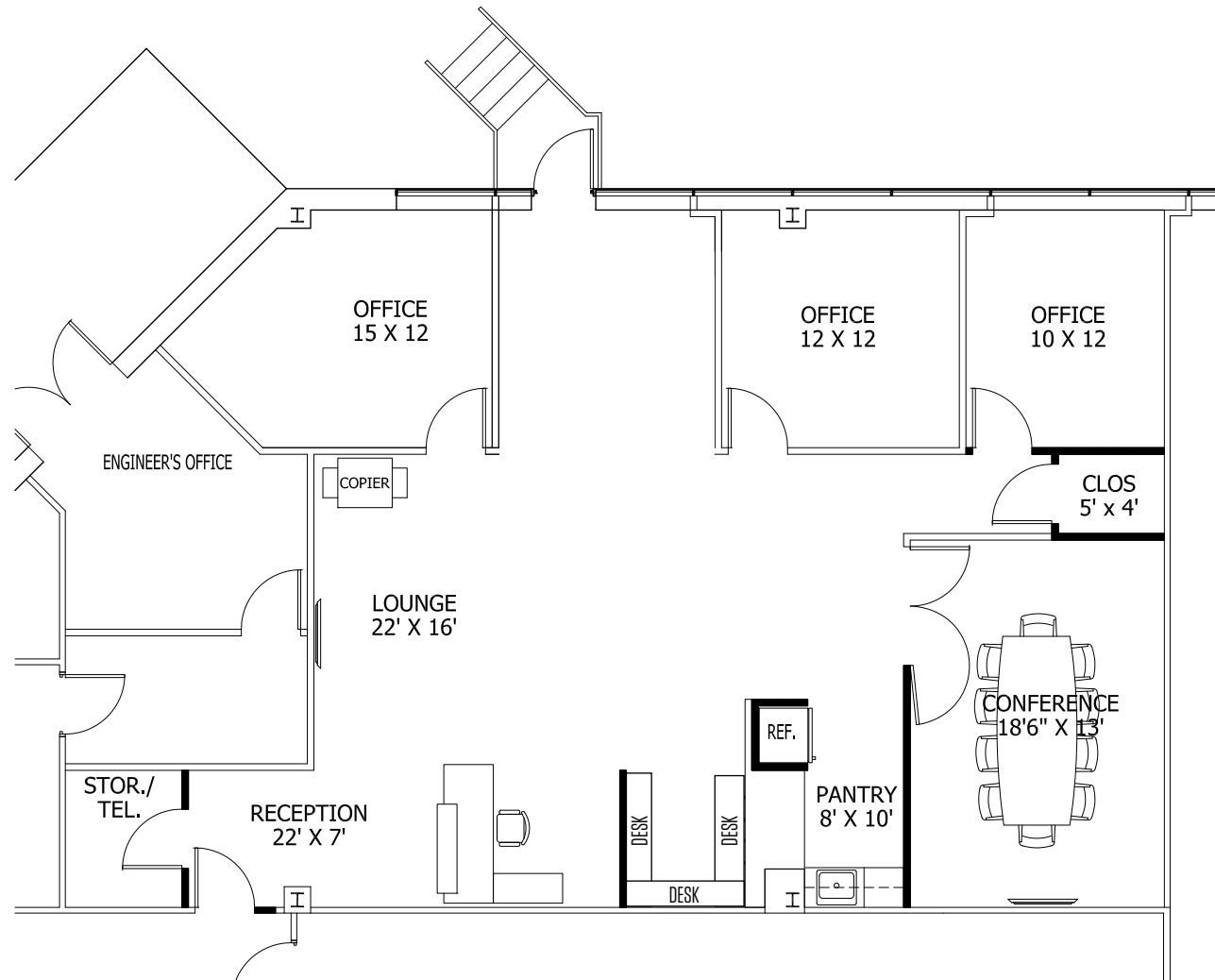


**SPACE 1**  
**2,518 SF**

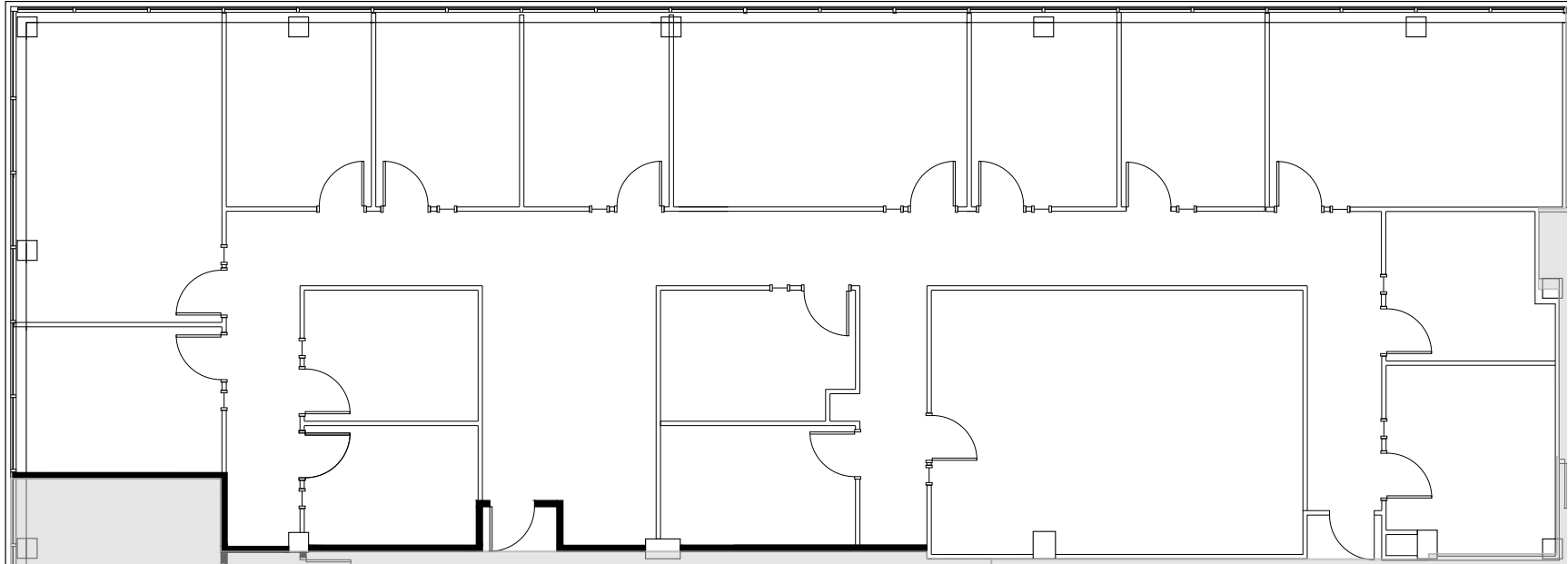
**SPACE 2**  
**4,490 SF**



**SUITE 120**  
**2,020 SF**



### SUITE ON THE 2ND FLOOR 4,252 SF



# TECH CENTER 29

12200 TECH ROAD, SILVER SPRING, MD 20904



**KENNETH FELLOWS**

kfellows@klnb.com | 301-222-0210

**ROBERT PUGH**

rpugh@klnb.com | 301-222-0211

**KEIRY MARTINEZ**

kmartinez@klnb.com | 703-334-5629

**klnb**

## FOR MORE INFORMATION, PLEASE CONTACT:

### **KENNETH FELLOWS**

kfellows@klnb.com  
301-222-0210

### **ROBERT PUGH**

rpugh@klnb.com  
301-222-0211

### **KEIRY MARTINEZ**

kmartinez@klnb.com  
703-334-5629

12435 Park Potomac Ave, Suite 250, Rockville, MD, 20854

.....

## klnb.com

 [facebook.com/KLNBCRE](https://facebook.com/KLNBCRE)

 [@KLNBCRE](https://twitter.com/KLNBCRE)

 [linkedin.com/company/klnb](https://linkedin.com/company/klnb)

 [instagram.com/klnbcre](https://instagram.com/klnbcre)