

# 1001 OLD PHILADELPHIA RD

1001 Old Philadelphia Road, Aberdeen, MD 21001  
Harford County



INDUSTRIAL LAND  
FOR LEASE

## PROPERTY HIGHLIGHTS:

- Trailer storage
- Contractors yard
- Short and long term
- $\pm 1 - 20$  acres
- M2 zoning
- Central Harford County location
- Easy access to I-95

**Christopher Wright**  
cwright@klnb.com  
443-914-2600

**Peter Dudley**  
pdudley@klnb.com  
443-632-2064

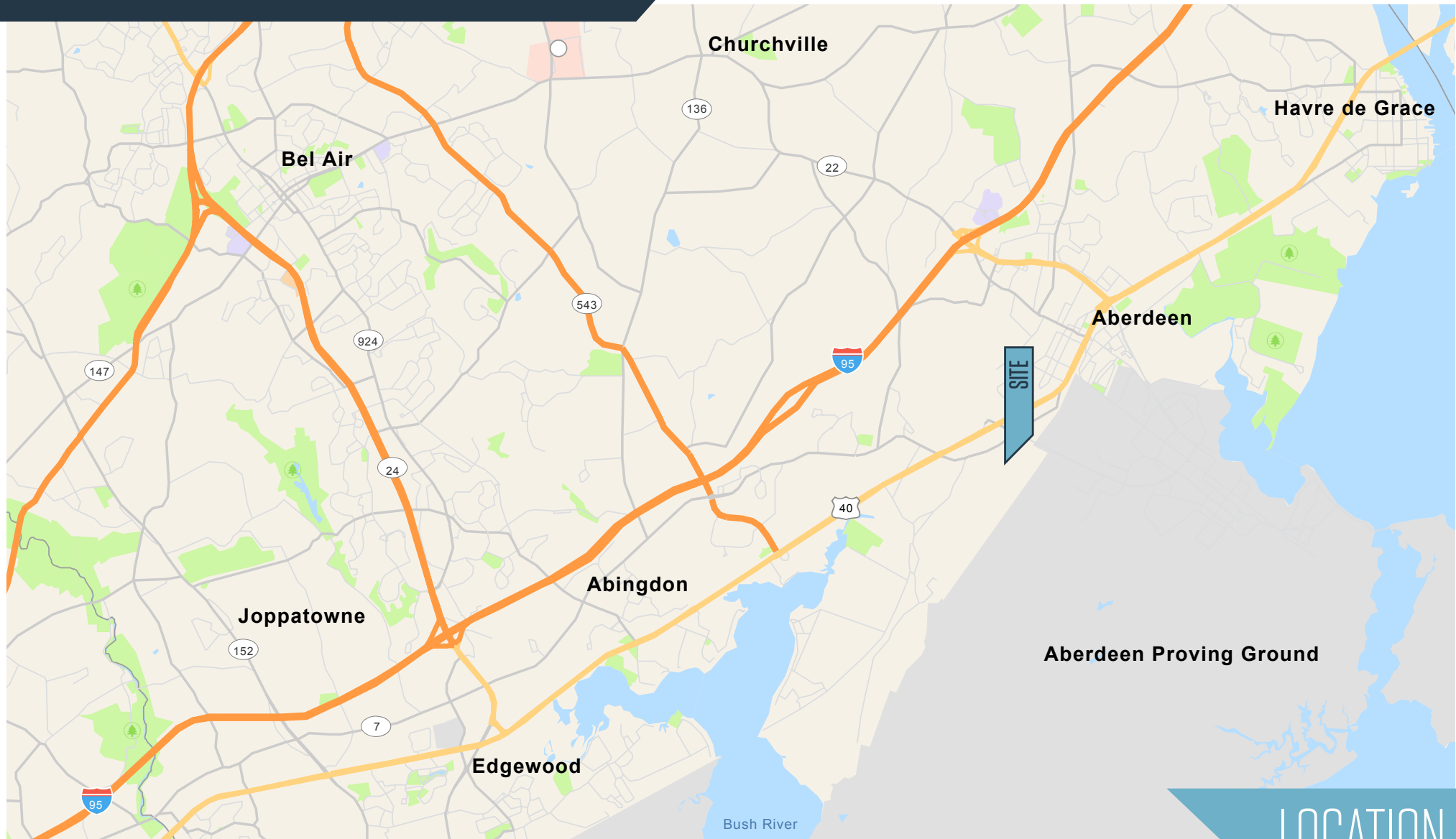
**Ben Brooks**  
bbrooks@klnb.com  
443-632-2048

100 West Road, Suite 505  
Baltimore, MD 21204  
**klnb.com**



# 1001 OLD PHILADELPHIA RD

1001 Old Philadelphia Road, Aberdeen, MD 21001  
Harford County



LOCATION

**Christopher Wright**  
cwright@klnb.com  
443-914-2600

**Peter Dudley**  
pdudley@klnb.com  
443-632-2064

**Ben Brooks**  
bbrooks@klnb.com  
443-632-2048

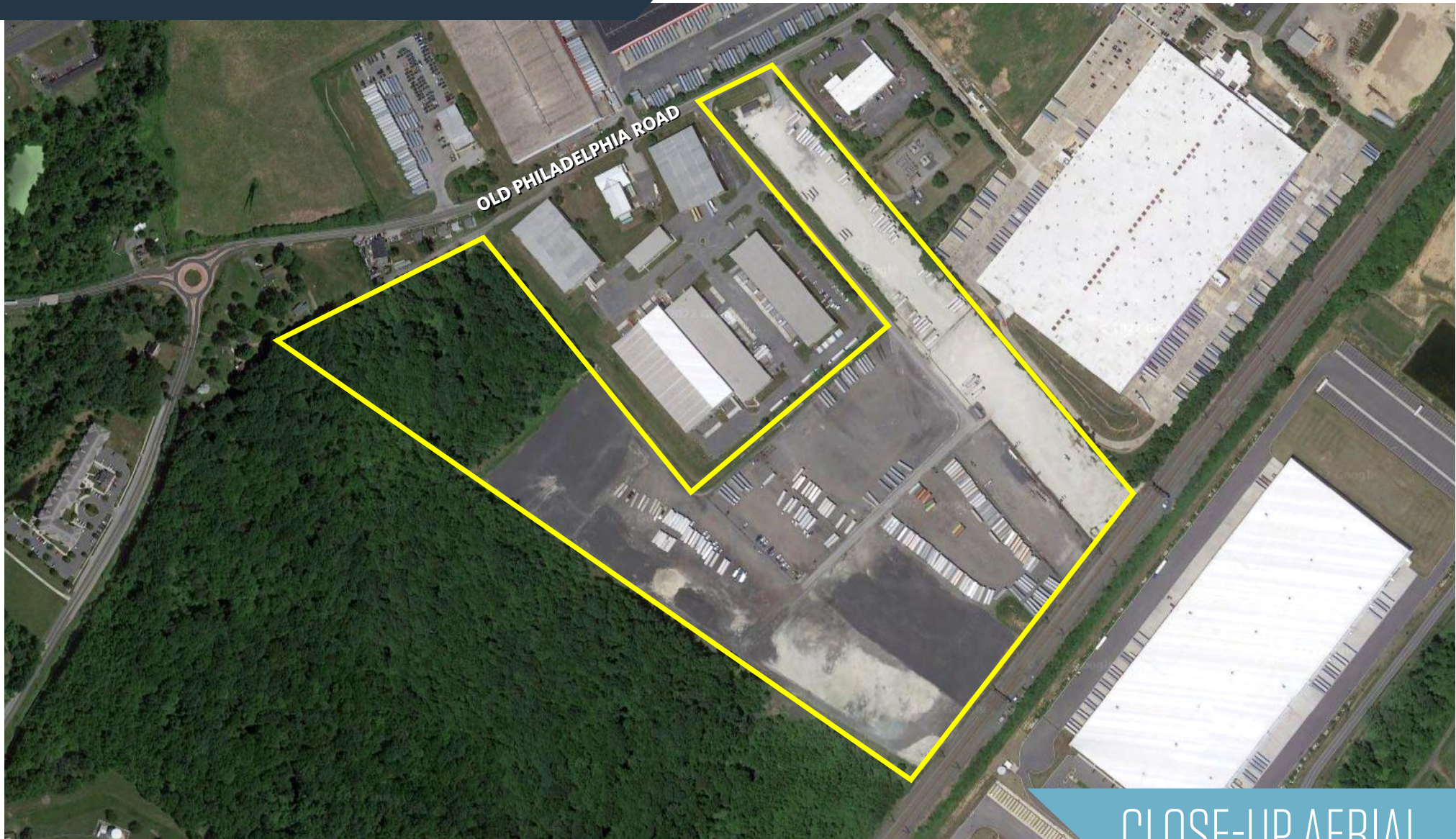
100 West Road, Suite 505  
Baltimore, MD 21204  
**klnb.com**





# 1001 OLD PHILADELPHIA RD

1001 Old Philadelphia Road, Aberdeen, MD 21001  
Harford County



CLOSE-UP AERIAL

**Christopher Wright**  
cwright@klnb.com  
443-914-2600

**Peter Dudley**  
pdudley@klnb.com  
443-632-2064

**Ben Brooks**  
bbrooks@klnb.com  
443-632-2048

100 West Road, Suite 505  
Baltimore, MD 21204  
**klnb.com**



# 1001 OLD PHILADELPHIA RD

1001 Old Philadelphia Road, Aberdeen, MD 21001  
Harford County

CLICK TO VIEW PROPERTY WEBSITE

For More Information, Please Contact:

**Christopher Wright**

cwright@klnb.com

443-914-2600

**Peter Dudley**

pdudley@klnb.com

443-632-2064

**Ben Brooks**

bbrooks@klnb.com

443-632-2048

100 West Road, Suite 505  
Baltimore, MD 21204

[klnb.com](http://klnb.com)



[instagram.com/klnbcre](https://www.instagram.com/klnbcre)



[linkedin.com/company/klnb](https://www.linkedin.com/company/klnb)



[facebook.com/KLNBCRE](https://www.facebook.com/KLNBCRE)

While we have no reason to doubt the accuracy of any of the information supplied, we cannot, and do not, guarantee its accuracy. All information should be independently verified prior to a purchase or lease of the property. We are not responsible for errors, omissions, misuse, or misinterpretation of information contained herein and make no warranty of any kind, express or implied, with respect to the property or any other matters.

**NAI** klnb