

NEARBY RETAILERS



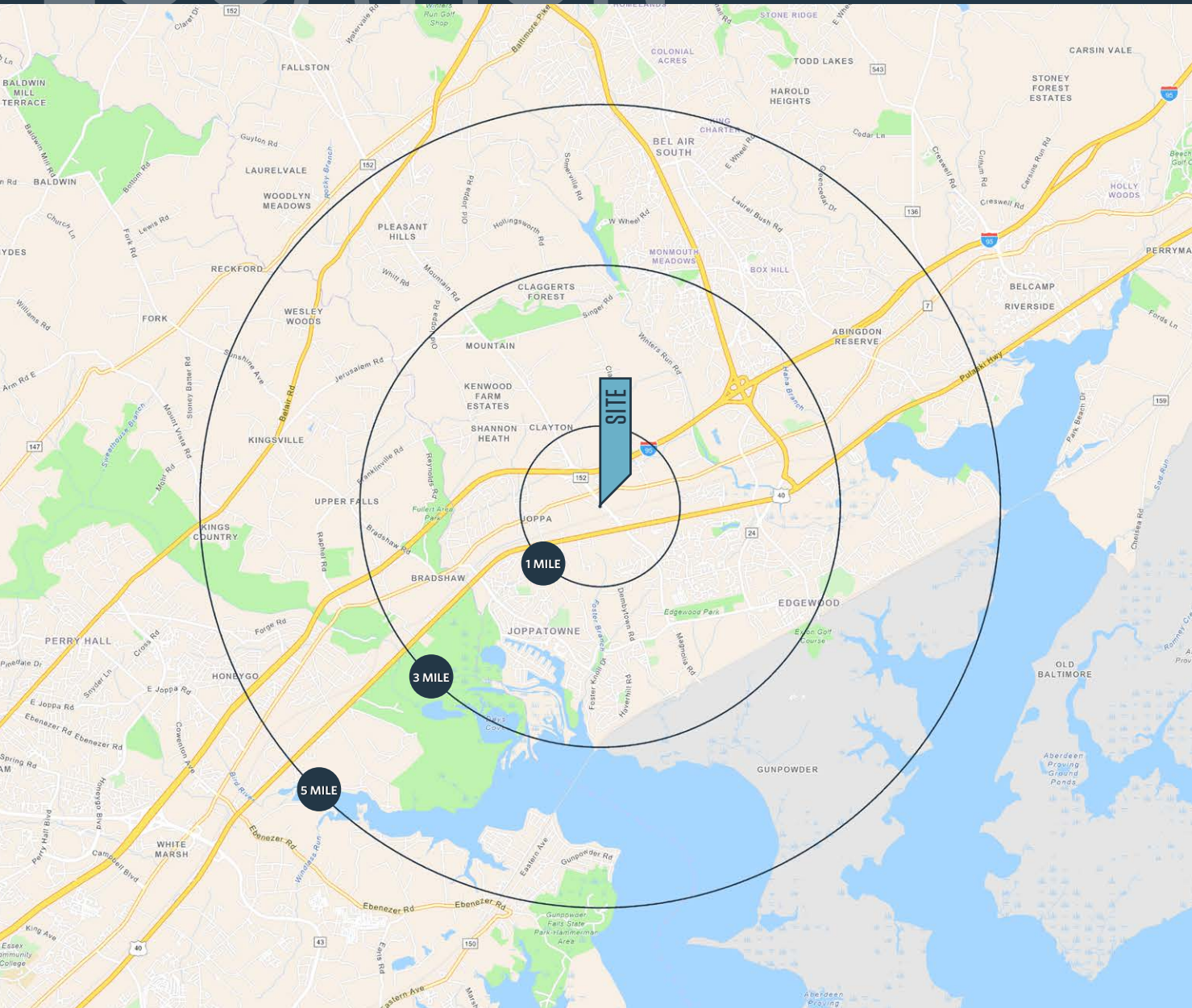
LAND FOR SALE

- 2.092 Acres of Land with over 300' of frontage on Mountain Road
- Zoned B3 - General Business District
- Strategically located between I-95 and Route 40
- Property is improved by a recently renovated 1,008 SF single family home with a 2-story detached garage building
- Property is served by public water and private septic

LOCATION

1209 OLD MOUNTAIN ROAD S

JOPPATOWNE, MD 21085, HARDFORD COUNTY



PROPERTY HIGHLIGHTS:

2.092 Acres of Land

DEMOGRAPHICS | 2024:

	1-MILE	3-MILE	5-MILE
Population	2,519	47,300	100,033
Daytime Population	3,951	39,109	80,992
Households	1,076	18,336	37,789
Average HH Income	\$108,248	\$110,025	\$129,865

[CLICK TO DOWNLOAD DEMOGRAPHIC REPORT](#)

TRAFFIC COUNTS | 2023:

I-95	157,165 ADT
Pulaski Hwy [US-40]	27,952 ADT
Mountain Road	26,692 ADT
Philadelphia Road	9,065 ADT

KEITH BARNETT

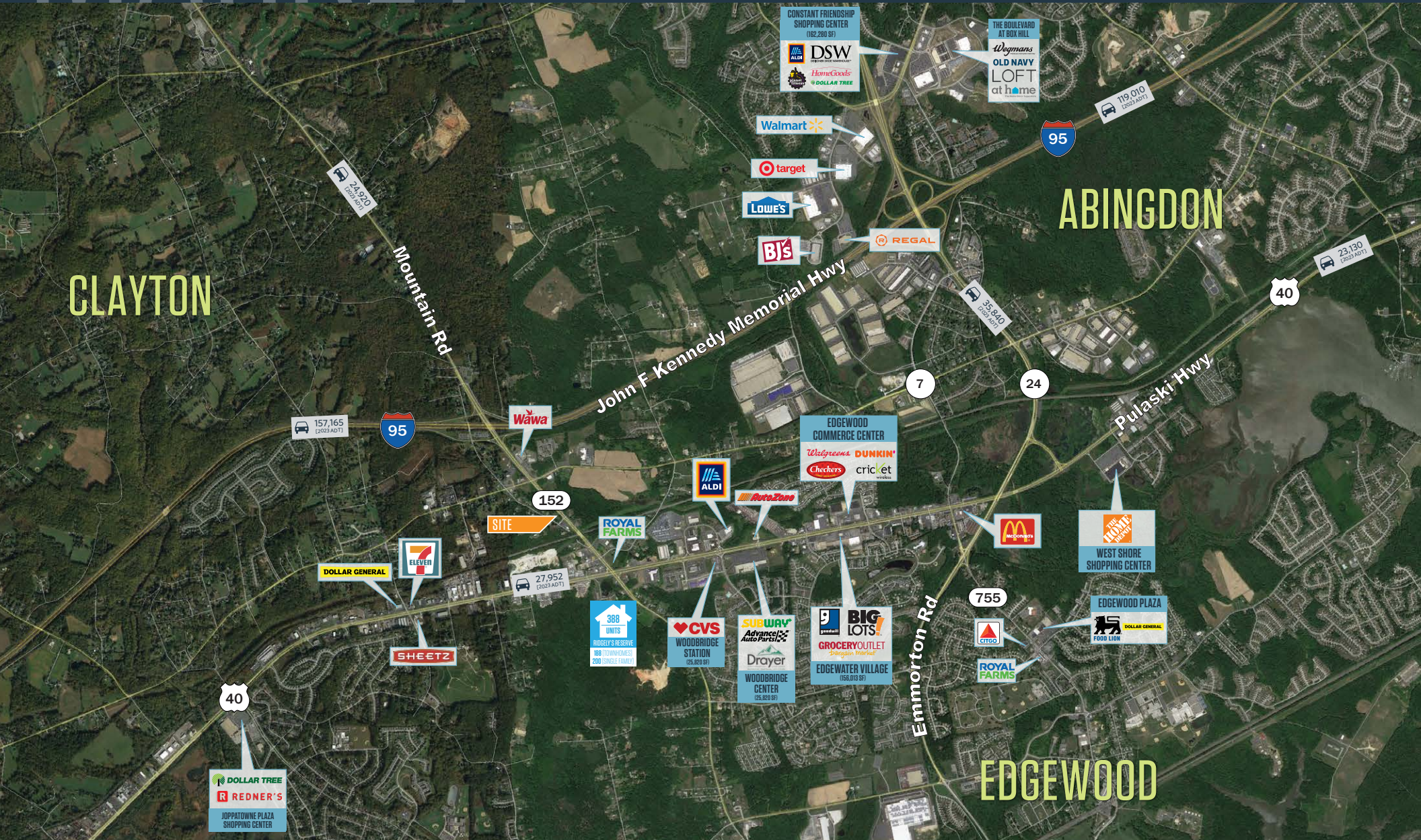
k Barnett@klnb.com | 443-632-2047

klnb

MARKET

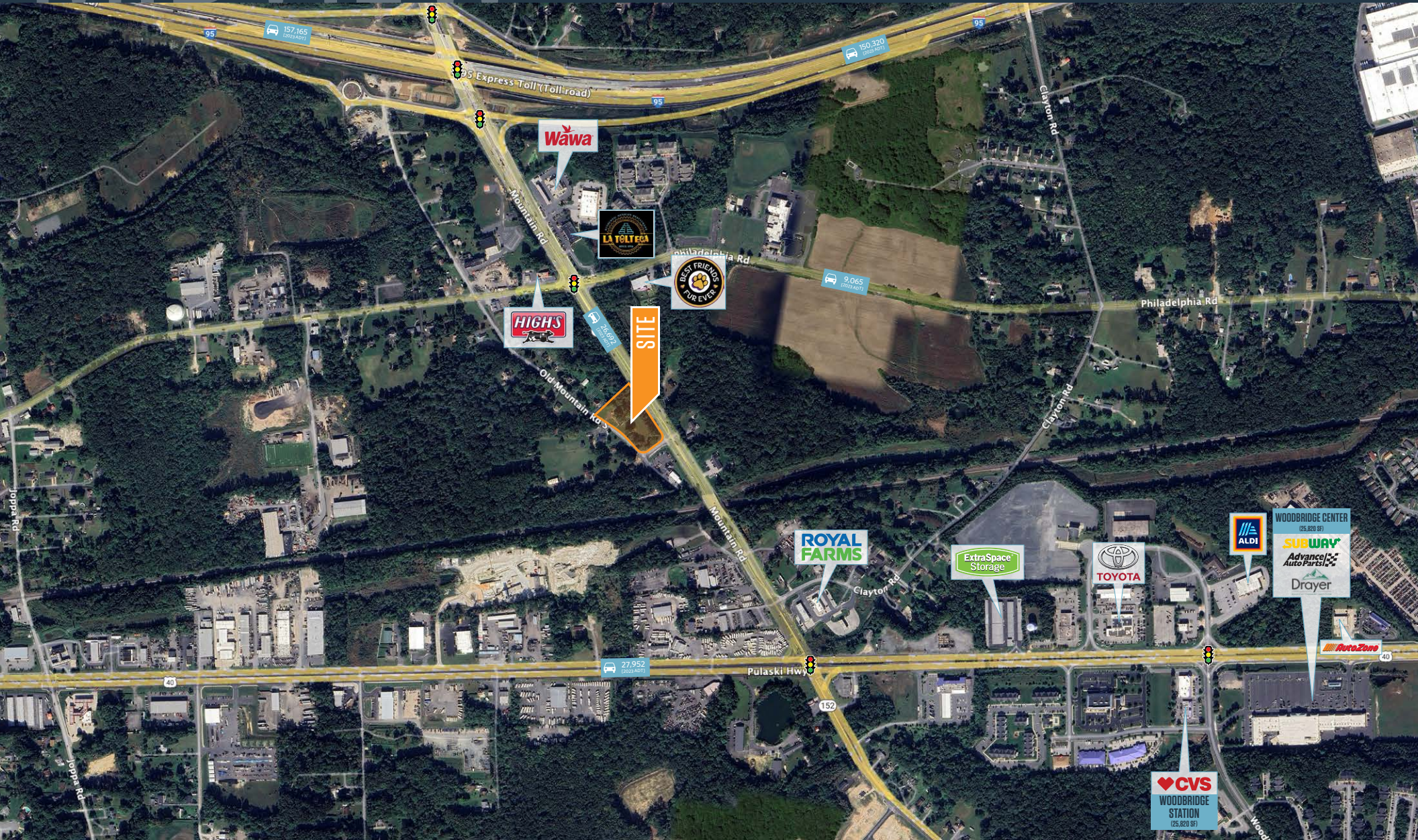
1209 OLD MOUNTAIN ROAD S

JOPPATOWNE, MD 21085, HARDFORD COUNTY



1209 OLD MOUNTAIN ROAD S

JOPPATOWNE, MD 21085, HARDFORD COUNTY



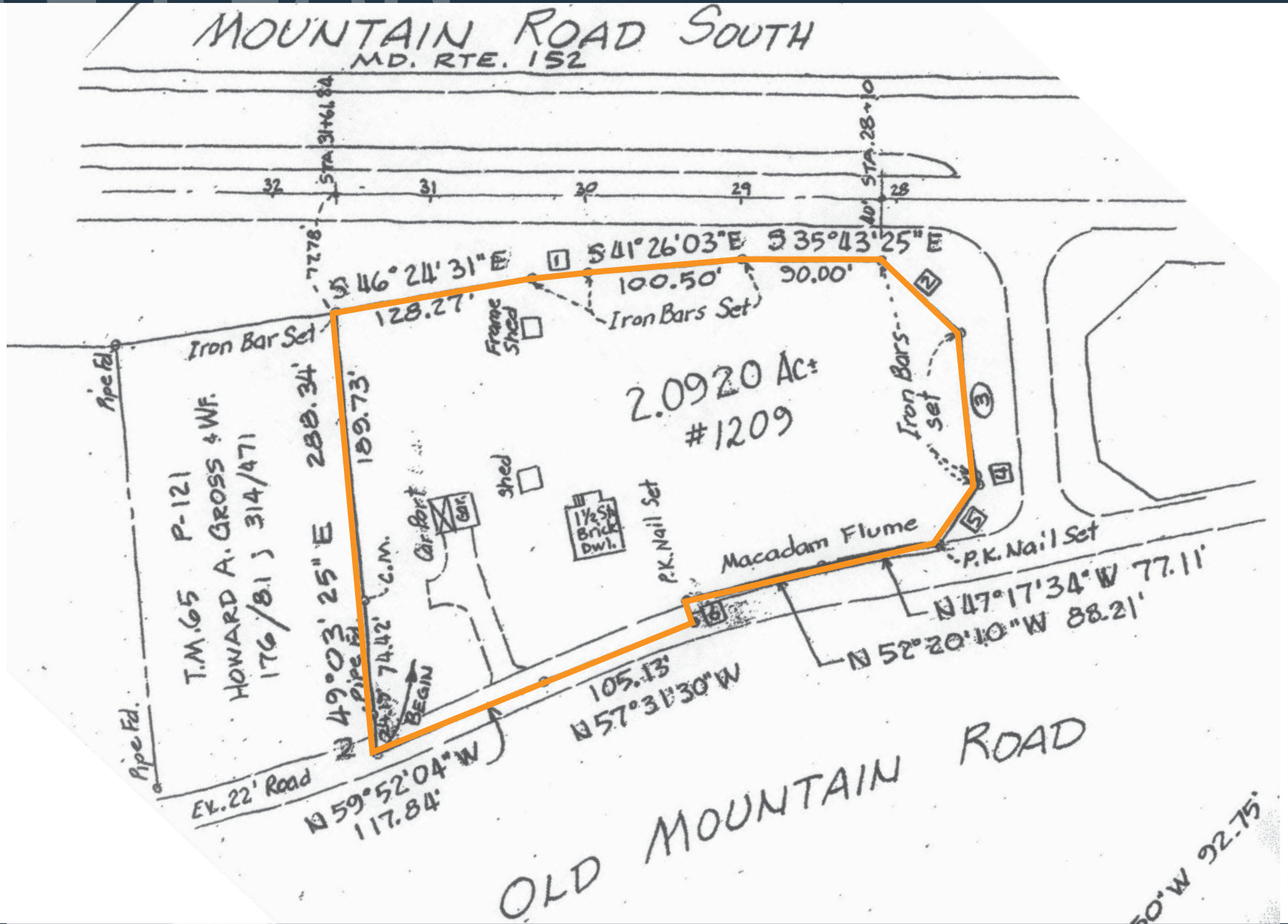
KEITH BARNETT

k Barnett@klnb.com | 443-632-2047

SITE PLAN

1209 OLD MOUNTAIN ROAD S

JOPPATOWNE, MD 21085, HARDFORD COUNTY





1209 OLD MOUNTAIN ROAD S

JOPPATOWNE, MD 21085, HARFORD COUNTY

FOR MORE INFORMATION, PLEASE CONTACT:

KEITH BARNETT

kbarnett@klnb.com

443-632-2047

100 West Road, Suite 505, Towson, MD 21204

.....

klnb.com



[instagram.com/klnbcre](https://www.instagram.com/klnbcre)



[linkedin.com/company/klnb](https://www.linkedin.com/company/klnb)



[facebook.com/KLNBCRE](https://www.facebook.com/KLNBCRE)

CLICK TO VIEW PROPERTY WEBSITE

While we have no reason to doubt the accuracy of any of the information supplied, we cannot, and do not, guarantee its accuracy. All information should be independently verified prior to a purchase or lease of the property. We are not responsible for errors, omissions, misuse, or misinterpretation of information contained herein and make no warranty of any kind, express or implied, with respect to the property or any other matters.