

HARFORD BUSINESS CTR

201 Gateway Drive, Bel Air, MD 21014
Harford County



PROPERTY HIGHLIGHTS:

- Retail/office flex building
- **Suite F & G Available:** ±3,150 SF
- **Building Size:** 20,400 SF
- **Parking:** 90 free surface spaces available
- **Zoning:** M1
- **Rental Rate:** \$15.00/SF
- **Utilities:**
 - » Heating - electric
 - » Sewer - city
 - » Water - city

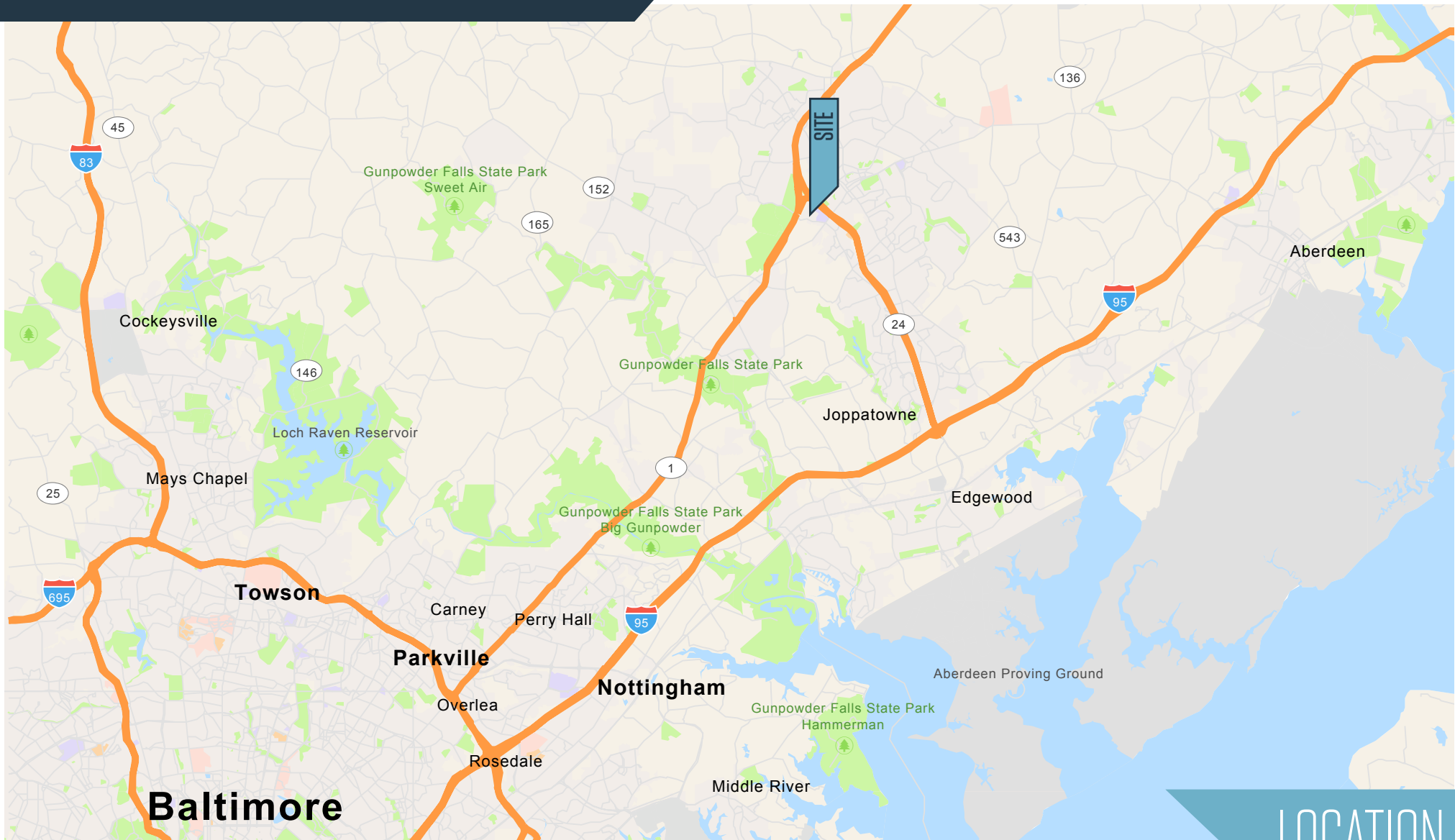
Christopher Wright
cwright@klnb.com
443-914-2600

100 West Road, Suite 505
Towson, MD 21204
klnb.com



HARFORD BUSINESS CTR

201 Gateway Drive, Bel Air, MD 21014
Harford County



LOCATION

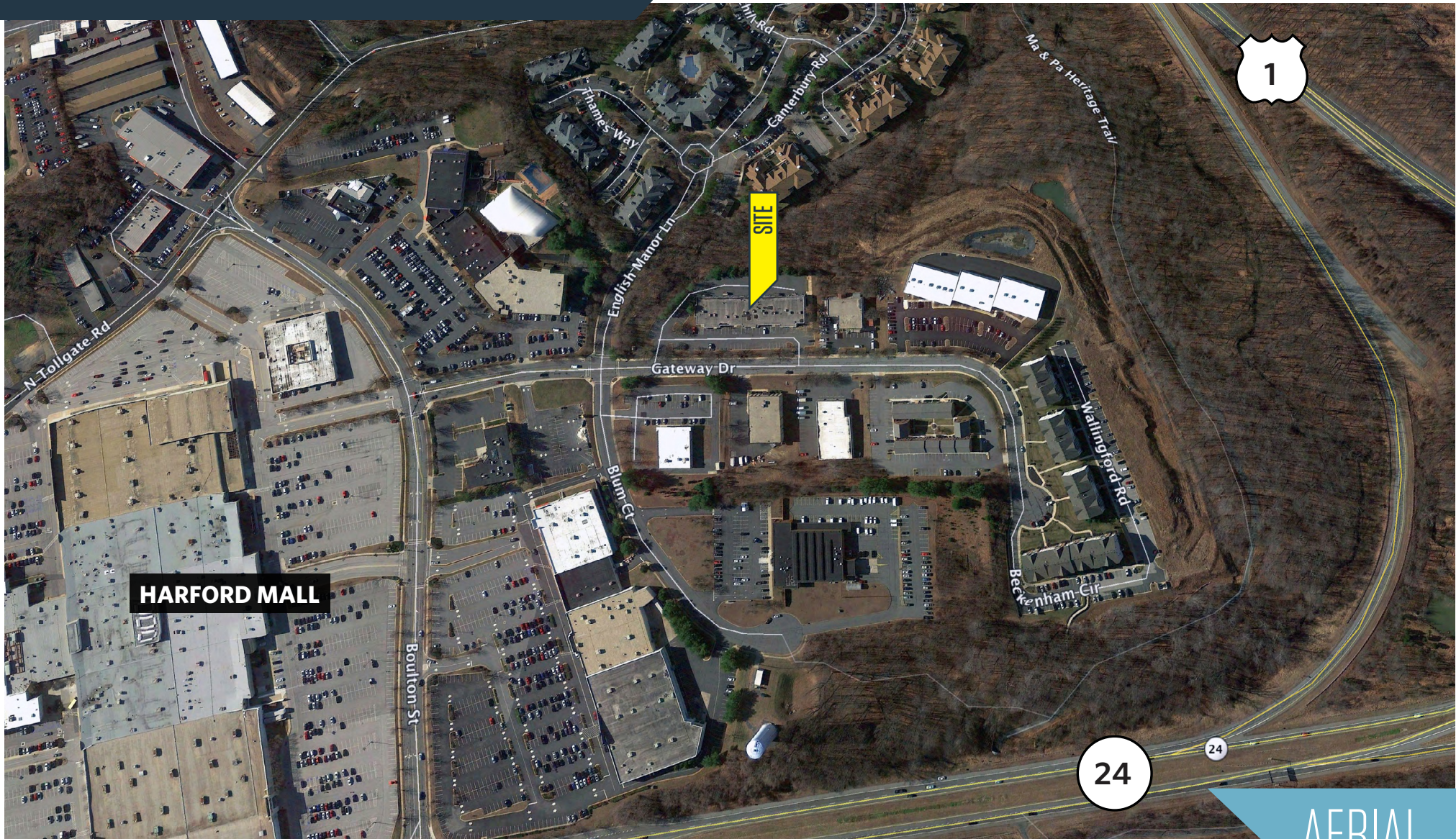
Christopher Wright
cwright@klnb.com
443-914-2600

100 West Road, Suite 505
Towson, MD 21204
klnb.com



HARFORD BUSINESS CTR

201 Gateway Drive, Bel Air, MD 21014
Harford County



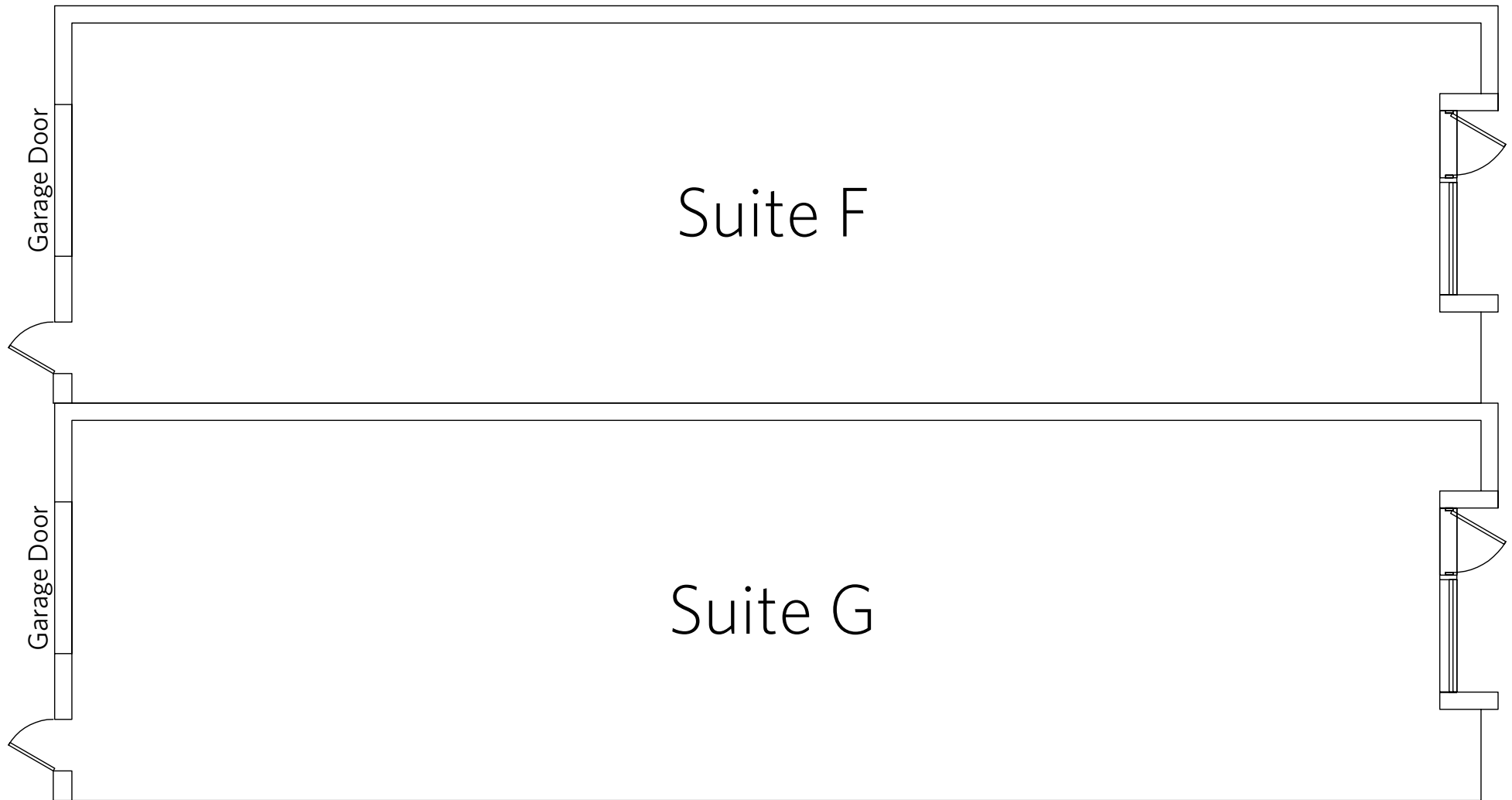
Christopher Wright
cwright@klnb.com
443-914-2600

100 West Road, Suite 505
Towson, MD 21204
klnb.com

NAklnb

HARFORD BUSINESS CTR

201 Gateway Drive, Bel Air, MD 21014
Harford County



FLOOR PLAN

Christopher Wright
cwright@klnb.com
443-914-2600

100 West Road, Suite 505
Towson, MD 21204
klnb.com



HARFORD BUSINESS CTR

201 Gateway Drive, Bel Air, MD 21014
Harford County

For More Information, Please Contact:

Christopher Wright

cwright@klnb.com

443-914-2600

100 West Road, Suite 505
Baltimore, MD 21204

klnb.com



[instagram.com/klnbcre](https://www.instagram.com/klnbcre)



[linkedin.com/company/klnb](https://www.linkedin.com/company/klnb)



[facebook.com/KLNBCRE](https://www.facebook.com/KLNBCRE)

While we have no reason to doubt the accuracy of any of the information supplied, we cannot, and do not, guarantee its accuracy. All information should be independently verified prior to a purchase or lease of the property. We are not responsible for errors, omissions, misuse, or misinterpretation of information contained herein and make no warranty of any kind, express or implied, with respect to the property or any other matters.

