



## NEARBY RETAILERS



## RETAIL FOR SALE / LEASE

- 2,414 SF Free Standing BB&T + Basement
- Lot size is 0.87 acres [37,984 SF]
- 2 Existing drive thru lanes
- 17 Parking spaces on site
- Surrounded by an affluent residential base in highly desirable Howard County, MD
- Zoned B-2 (Business: General) District which permits a wide variety of uses including financial services, fast food/fast casual/QSR restaurants, service retail, automotive, pet services, and medical office/clinics.
- Pylon signage on highly trafficked Baltimore National Pike [Route 40] which carries 48,232 vehicles per day.

**RYAN WILNER**

rwilner@klnb.com | 443-632-2058

**ANDY FELDMAN**

afeldman@klnb.com | 443-632-2053

**ALEX SHEARER**

ashearer@klnb.com | 443-632-2081

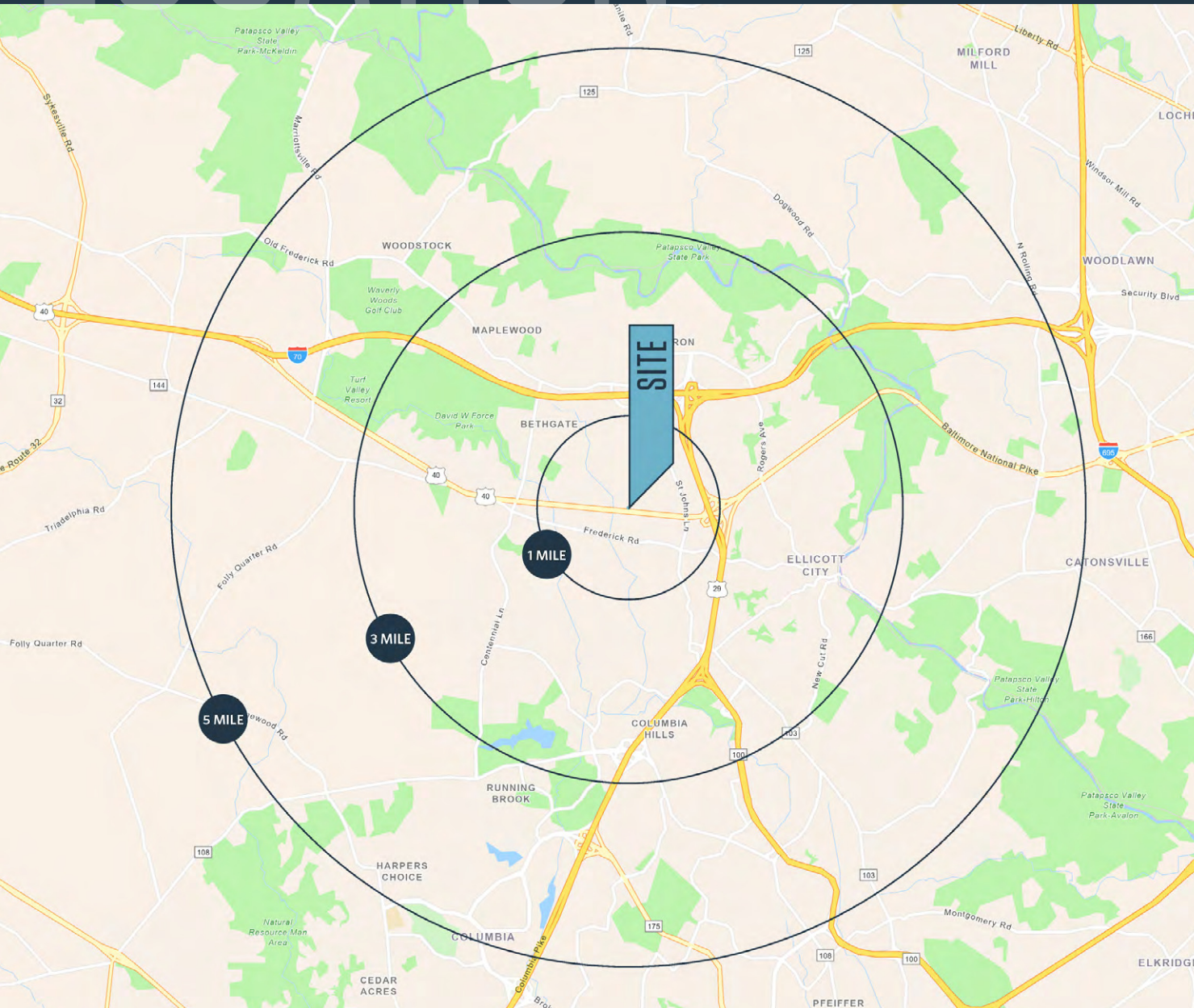
**klnb.com**



# LOCATION

## 9450 BALTIMORE NATIONAL PIKE

9450 BALTIMORE NATIONAL PIKE, ELLICOTT CITY, MD 21042, HOWARD COUNTY



### PROPERTY HIGHLIGHTS:

- 2,414 SF Free Standing BB&T + Basement
- Lot size - 0.87 acres [37,984 SF]

### DEMOGRAPHICS | 2024:

1-MILE	3-MILE	5-MILE
Population		
9,857	66,177	167,260
Daytime Population		
11,237	58,032	151,757
Households		
3,574	23,223	62,062
Average HH Income		
\$214,053	\$209,583	\$179,049

[CLICK TO DOWNLOAD DEMOGRAPHIC REPORT](#)

### TRAFFIC COUNTS | 2023:

Baltimore National Pike [US-40] 48,232 ADT

**RYAN WILNER**

rwilner@klnb.com | 443-632-2058

**ANDY FELDMAN**

afeldman@klnb.com | 443-632-2053

**ALEX SHEARER**

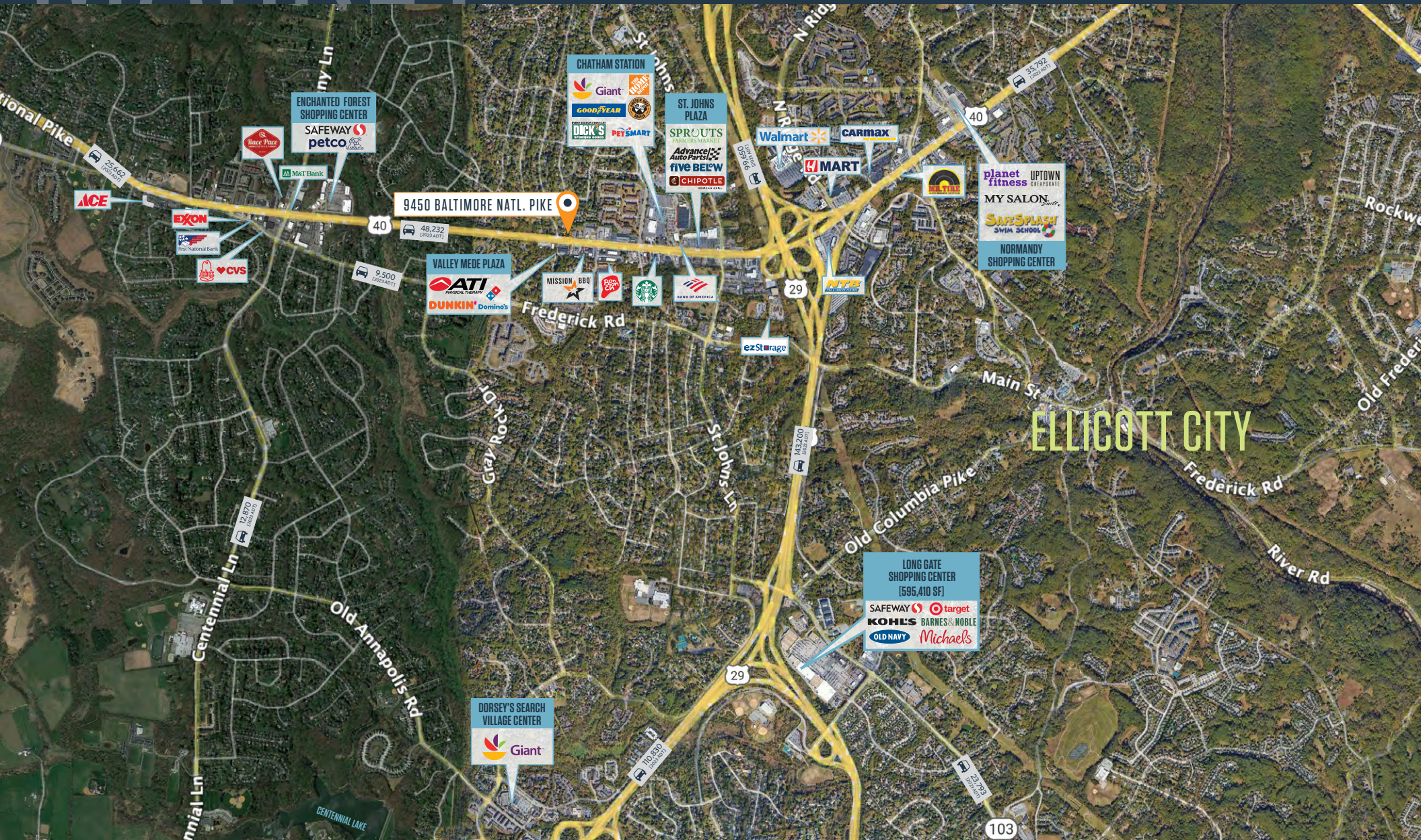
ashearer@klnb.com | 443-632-2081

**klnb**



# 9450 BALTIMORE NATIONAL PIKE

9450 BALTIMORE NATIONAL PIKE, ELLICOTT CITY, MD 21042, HOWARD COUNTY



**RYAN WILNER**

rwilner@klnb.com | 443-632-2058

**ANDY FELDMAN**

afeldman@klnb.com | 443-632-2053

**ALEX SHEARER**

ashearer@klnb.com | 443-632-2081



# CLOSE-UP

## 9450 BALTIMORE NATIONAL PIKE

9450 BALTIMORE NATIONAL PIKE, ELLICOTT CITY, MD 21042, HOWARD COUNTY



**RYAN WILNER**

[rwilner@klnb.com](mailto:rwilner@klnb.com) | 443-632-2058

**ANDY FELDMAN**

[afeldman@klnb.com](mailto:afeldman@klnb.com) | 443-632-2053

**ALEX SHEARER**

[ashearer@klnb.com](mailto:ashearer@klnb.com) | 443-632-2081

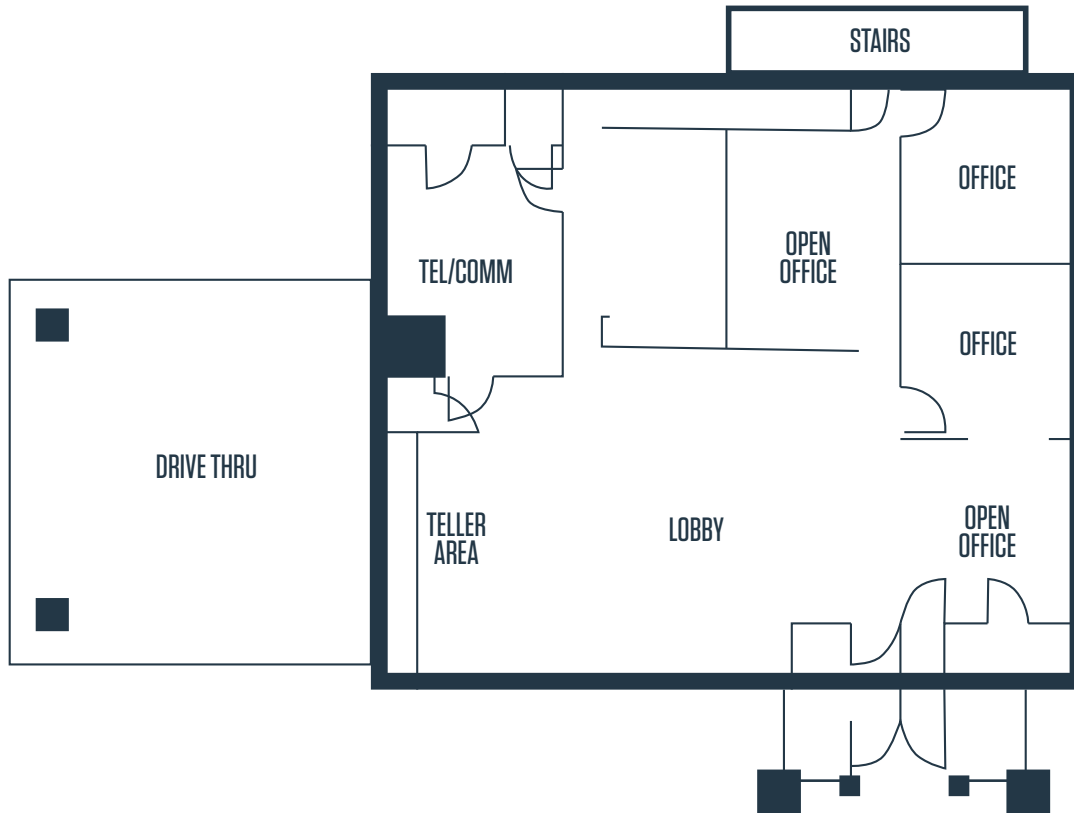
**klnb**



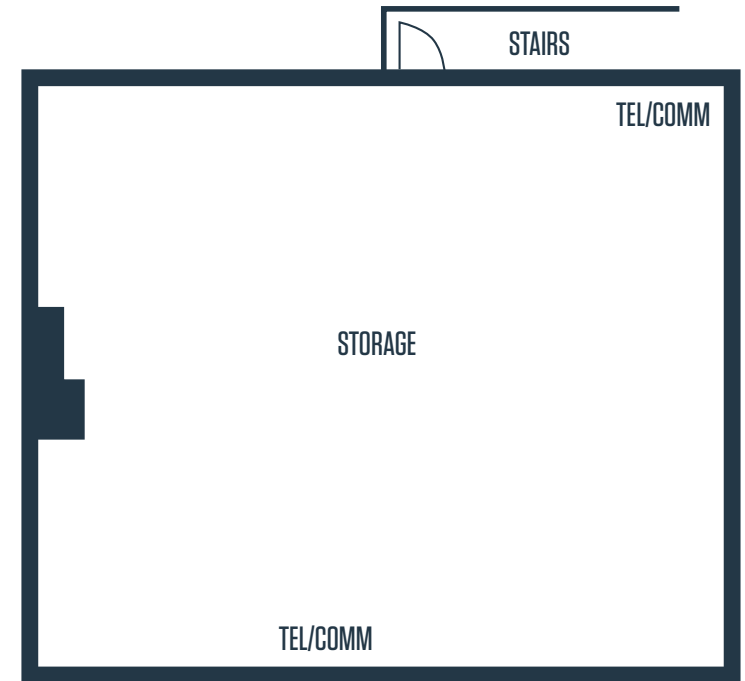
# SITE PLAN

## 9450 BALTIMORE NATIONAL PIKE

9450 BALTIMORE NATIONAL PIKE, ELLICOTT CITY, MD 21042, HOWARD COUNTY



FIRST FLOOR PLAN



BASEMENT FLOOR PLAN

**RYAN WILNER**

rwilner@klnb.com | 443-632-2058

**ANDY FELDMAN**

afeldman@klnb.com | 443-632-2053

**ALEX SHEARER**

ashearer@klnb.com | 443-632-2081







# 9450 BALTIMORE NATIONAL PIKE

9450 BALTIMORE NATIONAL PIKE, ELLICOTT CITY, MD 21042, HOWARD COUNTY

## FOR MORE INFORMATION, PLEASE CONTACT:

### RYAN WILNER

[rwilner@klnb.com](mailto:rwilner@klnb.com)  
443-632-2058

### ANDY FELDMAN

[afeldman@klnb.com](mailto:afeldman@klnb.com)  
443-632-2053

### ALEX SHEARER

[ashearer@klnb.com](mailto:ashearer@klnb.com)  
443-632-2081

100 West Road, Suite 505, Towson, MD 21204

.....

## klnb.com



**CLICK TO VIEW PROPERTY WEBSITE**

While we have no reason to doubt the accuracy of any of the information supplied, we cannot, and do not, guarantee its accuracy. All information should be independently verified prior to a purchase or lease of the property. We are not responsible for errors, omissions, misuse, or misinterpretation of information contained herein and make no warranty of any kind, express or implied, with respect to the property or any other matters.