

2000A PULASKI HWY

Edgewood, MD 21040
Harford County

2ND GENERATION QSR WITH DRIVE THRU
AVAILABLE FOR SUBLEASE THROUGH 7/31/2039



NEARBY RETAILERS

Gabe's **GROCERY OUTLET**
bargain market



Auto
Zone



DUNKIN'

DRIVE THRU FOR SUBLEASE

- 2,633 SF former KFC with prominent frontage and excellent exposure along Pulaski Highway [27,952 ADT]
- Drive-thru in place - excellent for QSR users looking for speed-to-market
- Strong regional access - under 1 mile to I-95 interchange, close to Copperplex Sports Complex and nearby industrial employers
- Lot Size: .7 acres
- Zoning: B3
- Existing Term until 7/31/2039

LEASED BY:

klnb

Rachel Klein
rklein@klnb.com
443-632-2087

Cooper Henry
chenry@klnb.com
443-632-2085

100 West Road, Suite 505, Towson, MD 21204
klnb.com

2000A PULASKI HWY

Edgewood, MD 21040
Harford County



TRAFFIC COUNTS | 2023

Pulaski Hwy [US-40]	27,952 ADT
Emmorton Rd [MD-24]	22,030 ADT

	1-MILE	3-MILES	5-MILES			
	Population 9,250	52,407	96,302		Households 3,516	19,989 36,730
	Daytime Population 9,321	43,045	77,835		Average Household Income \$77,059	\$110,577 \$124,036

Rachel Klein
rklein@klnb.com
443-632-2087

Cooper Henry
chenry@klnb.com
443-632-2085

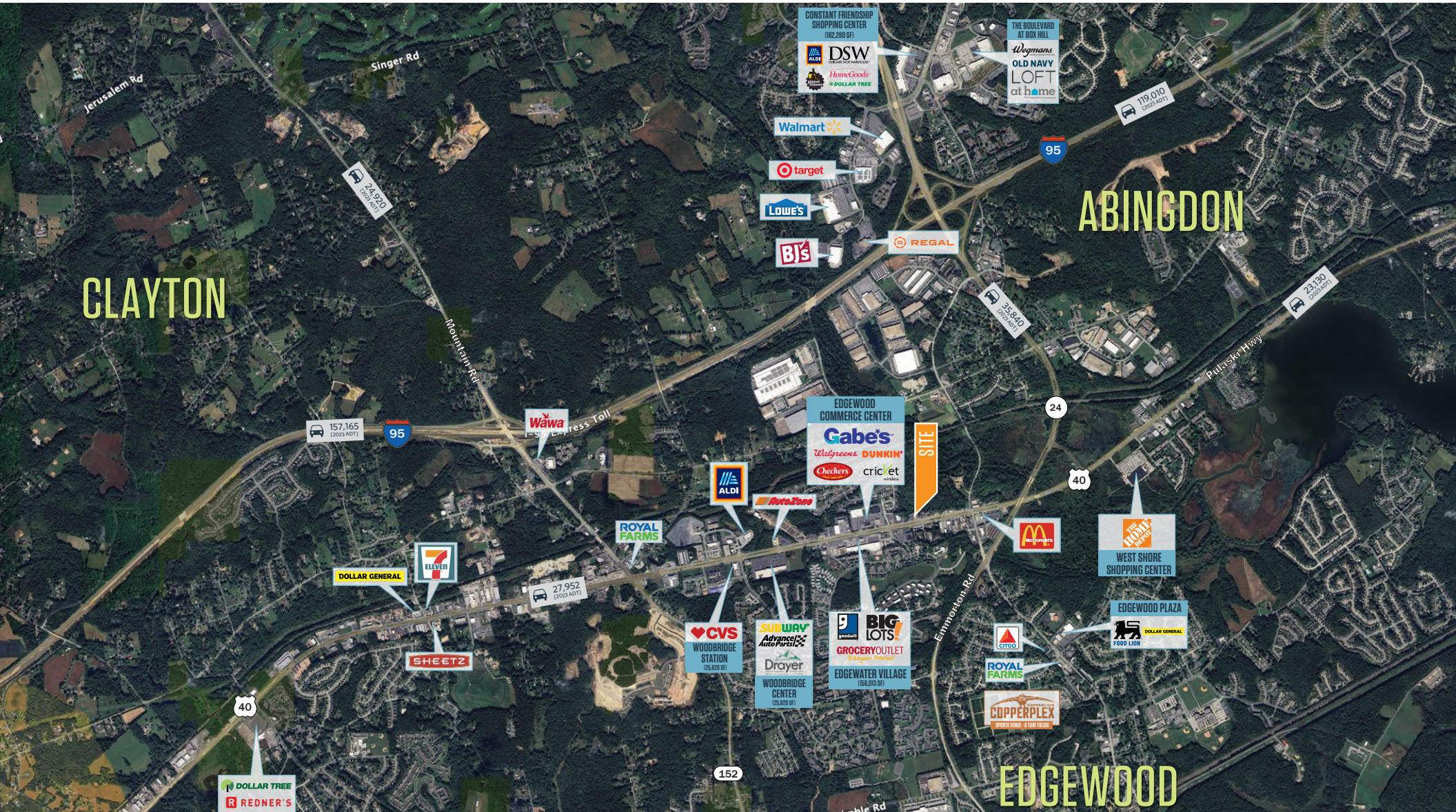
100 West Road, Suite 505
Towson, MD 21204
klnb.com



2000A PULASKI HWY

Edgewood, MD 21040
Harford County

MARKET AERIAL



Rachel Klein
rklein@klnb.com
443-632-2087

Cooper Henry
chenry@klnb.com
443-632-2085

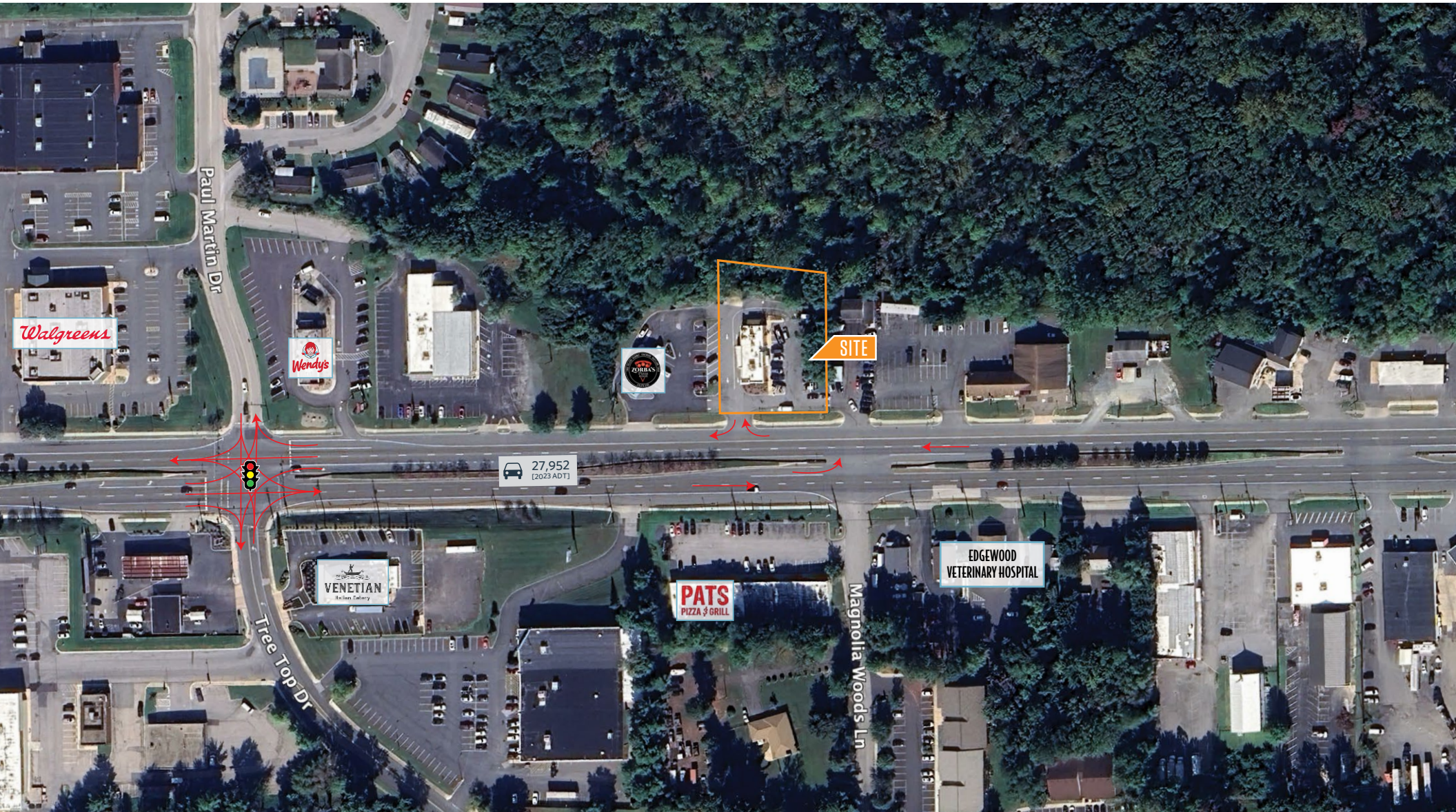
100 West Road, Suite 505
Towson, MD 21204
klnb.com

klnb

2000A PULASKI HWY

Edgewood, MD 21040
Harford County

MIDVIEW AERIAL



Rachel Klein
rklein@klnb.com
443-632-2087

Cooper Henry
chenry@klnb.com
443-632-2085

100 West Road, Suite 505
Towson, MD 21204
klnb.com

klnb

2000A PULASKI HWY

Edgewood, MD 21040
Harford County

CLOSE-UP AERIAL



SITE

Rachel Klein
rklein@klnb.com
443-632-2087

Cooper Henry
chenry@klnb.com
443-632-2085

100 West Road, Suite 505
Towson, MD 21204
klnb.com

klnb

Edgewood, MD 21040
Harford County

LOT 1
P.B. 48, PG. 63
Now or Formerly:
Wardell Inc.
Liber 8250, Folio 446
Tax ID: 01-017187

LOT 2
P.B. 48, PG. 63
Vested In
New NBNC Trust
Liber 2829, Folio 307
Tax ID: 01-017195

1 Story Masonry Building
2,633 Sq. Feet
HT=16'±

Storm Drain Easement
P.B. 49, Pg. 93

28' Ingress/Egress Easement
P.B. 49, Pg. 93

25' Minimum Building Setback
per Plat Book 49, Page 93

Schedule A: Together With
(5) Ingress/Egress Easement
Liber 1226, Folio 360

Pulaski Highway a/k/a U.S. Route 40
150' Public R/W - Asphalt Pavement

2000A PULASKI HWY

Edgewood, MD 21040
Harford County

PHOTOS



2,633 SF

W/ DRIVE THRU

Rachel Klein
rklein@klnb.com
443-632-2087

Cooper Henry
chenry@klnb.com
443-632-2085

100 West Road, Suite 505
Towson, MD 21204
klnb.com

klnb

2000A PULASKI HWY

Edgewood, MD 21040

Harford County

[CLICK TO VIEW PROPERTY WEBSITE](#)

For More Information, Please Contact:

Rachel Klein
rklein@klnb.com
443-632-2087

Cooper Henry
chenry@klnb.com
443-632-2085



While we have no reason to doubt the accuracy of any of the information supplied, we cannot, and do not, guarantee its accuracy. All information should be independently verified prior to a purchase or lease of the property. We are not responsible for errors, omissions, misuse, or misinterpretation of information contained herein and make no warranty of any kind, express or implied, with respect to the property or any other matters.

100 West Road, Suite 505
Towson, MD 21204
klnb.com

