

PARKLAWN PLAZA

11821 Parklawn Drive | Rockville, MD

UNDER NEW OWNERSHIP



FOR LEASE

PROPERTY HIGHLIGHTS

Building Specifications

- Building Type: Office
- Year Built: 1986
- Building Size: 40,449 SF
- Building Height: 4 Stories
(3 above grade; 1 lower level; with windows)

Features

- Ample surface parking
- Public transportation is available through Montgomery County's "Ride On" program
- Abundance of amenities, food service options and retail centers within walking distance

Location

- Quick access to I-270 and I-495
- Two WMATA Metro stops (Twinbrook & North Bethesda) are within 2 miles

Kenneth Fellows
kfellows@klnb.com
301-222-0210

Robert Pugh
rpugh@klnb.com
301-222-0211

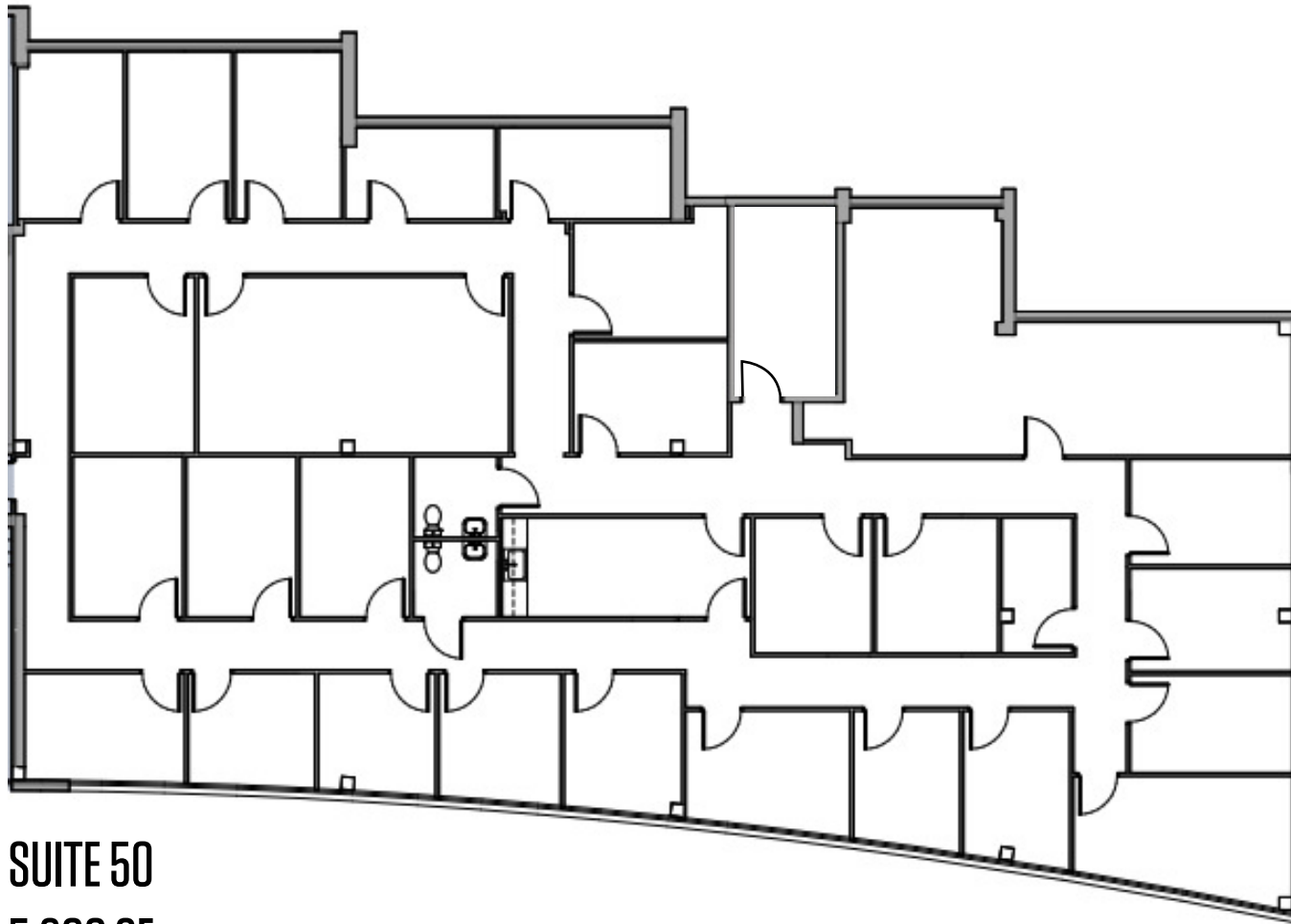
Keiry Martinez
kmartinez@klnb.com
703-334-5629

12435 Park Potomac Ave, Suite 250,
Rockville, MD, 20854
klnb.com



PARKLAWN PLAZA

11821 Parklawn Drive | Rockville, MD



SUITE 50

5,800 SF

Kenneth Fellows
kfellows@klnb.com
301-222-0210

Robert Pugh
rpugh@klnb.com
301-222-0211

Keiry Martinez
kmartinez@klnb.com
703-334-5629

12435 Park Potomac Ave, Suite 250,
Rockville, MD, 20854
klnb.com



PARKLAWN PLAZA

11821 Parklawn Drive | Rockville, MD



 SUITE 224
950 SF

Kenneth Fellows
kfellows@klnb.com
301-222-0210

Robert Pugh
rpugh@klnb.com
301-222-0211

Keiry Martinez
kmartinez@klnb.com
703-334-5629

12435 Park Potomac Ave, Suite 250,
Rockville, MD, 20854
klnb.com

klnb

PARKLAWN PLAZA

11821 Parklawn Drive | Rockville, MD

[CLICK TO VIEW PROPERTY WEBSITE](#)

For More Information, Please Contact:

Kenneth Fellows

kfellows@klnb.com

301-222-0210

Robert Pugh

rpugh@klnb.com

301-222-0211

Keiry Martinez

kmartinez@klnb.com

703-334-5629

12435 Park Potomac Ave, Suite 250,
Rockville, MD, 20854

klnb.com



[instagram.com/klnbcre](https://www.instagram.com/klnbcre)



[linkedin.com/company/klnb](https://www.linkedin.com/company/klnb)



[facebook.com/KLNBCRE](https://www.facebook.com/KLNBCRE)

While we have no reason to doubt the accuracy of any of the information supplied, we cannot, and do not, guarantee its accuracy. All information should be independently verified prior to a purchase or lease of the property. We are not responsible for errors, omissions, misuse, or misinterpretation of information contained herein and make no warranty of any kind, express or implied, with respect to the property or any other matters.

Kenneth Fellows

kfellows@klnb.com

301-222-0210

Robert Pugh

rpugh@klnb.com

301-222-0211

Keiry Martinez

kmartinez@klnb.com

703-334-5629

12435 Park Potomac Ave, Suite 250,
Rockville, MD, 20854

klnb.com

klnb