



INDUSTRIAL FOR LEASE

- 12,000 SF freestanding warehouse in Sinclair Business Center
- 1 acre fully fenced
- Clear Height: 21'+
- Dock Loading
- Power: 3 phase, 800 amps
- Zoning: I-1
- **Freezer/cooler fully operational**
- Access: Convenient to I-95 & Pulaski Highway
- Taxes: \$13,282
- Insurance: \$2,800

JIM CARONNA

jcaronna@klnb.com | 443-632-2070

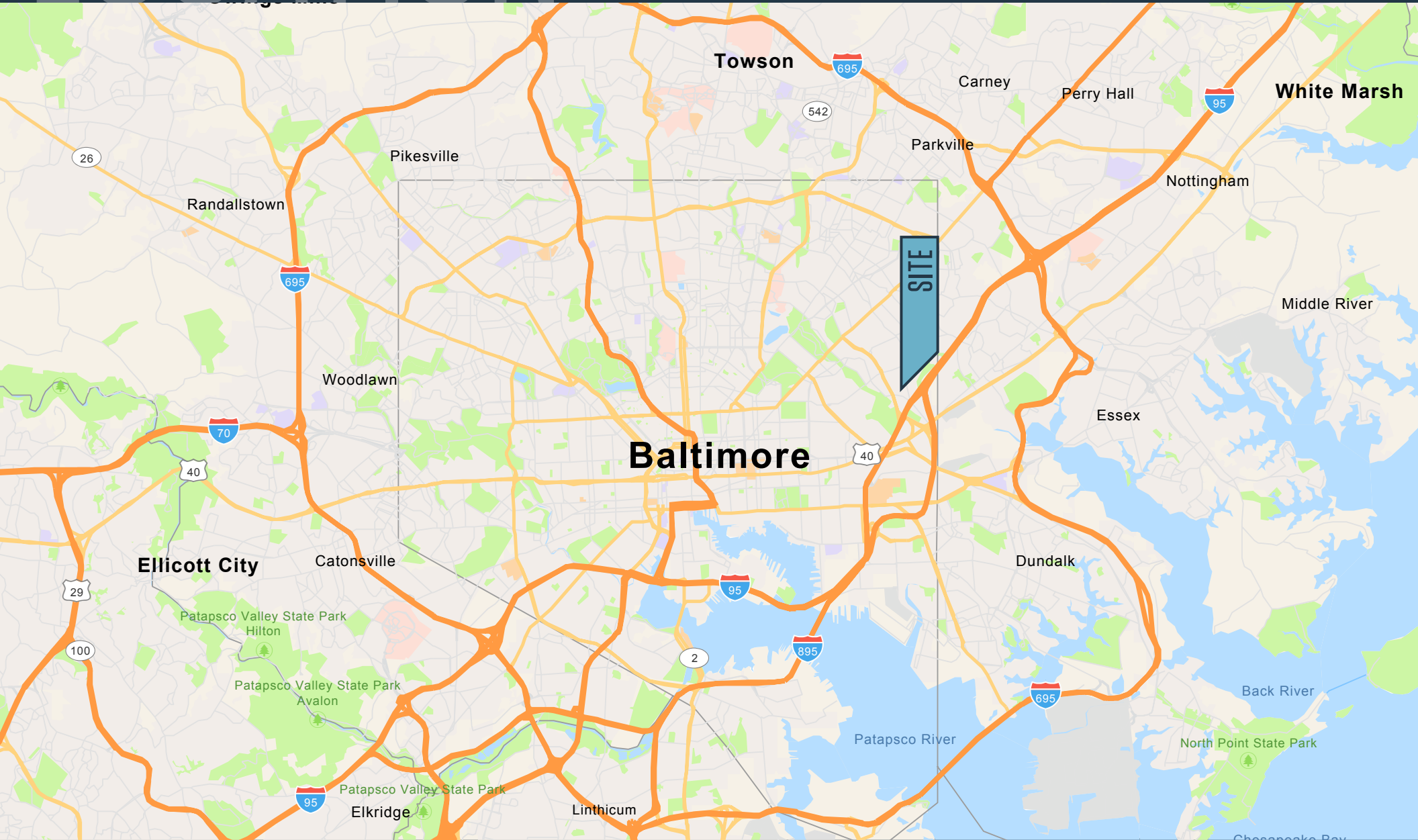
BEN BROOKS

bbrooks@klnb.com | 443-632-2048

LOCATION

SINCLAIR BUSINESS CENTER

4216 SHANNON DRIVE, BALTIMORE, MD 21213, BALTIMORE CITY



JIM CARONNA

jcaronna@klnb.com | 443-632-2070

BEN BROOKS

bbrooks@klnb.com | 443-632-2048



PHOTOS

SINCLAIR BUSINESS CENTER

4216 SHANNON DRIVE, BALTIMORE, MD 21213, BALTIMORE CITY



JIM CARONNA

jcaronna@klnb.com | 443-632-2070

BEN BROOKS

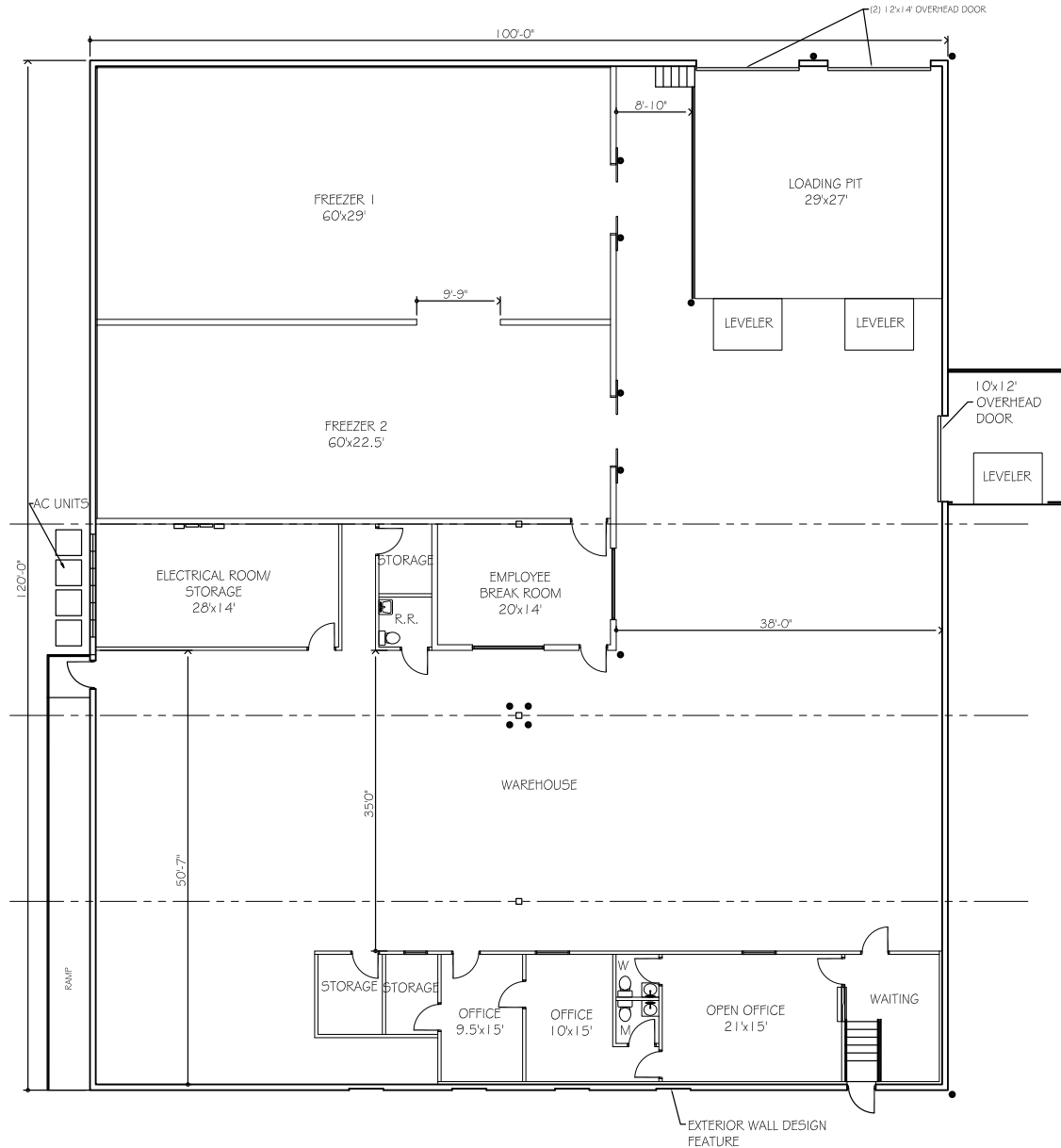
bbrooks@klnb.com | 443-632-2048

NAklnb

SITE PLAN

SINCLAIR BUSINESS CENTER

4216 SHANNON DRIVE, BALTIMORE, MD 21213, BALTIMORE CITY



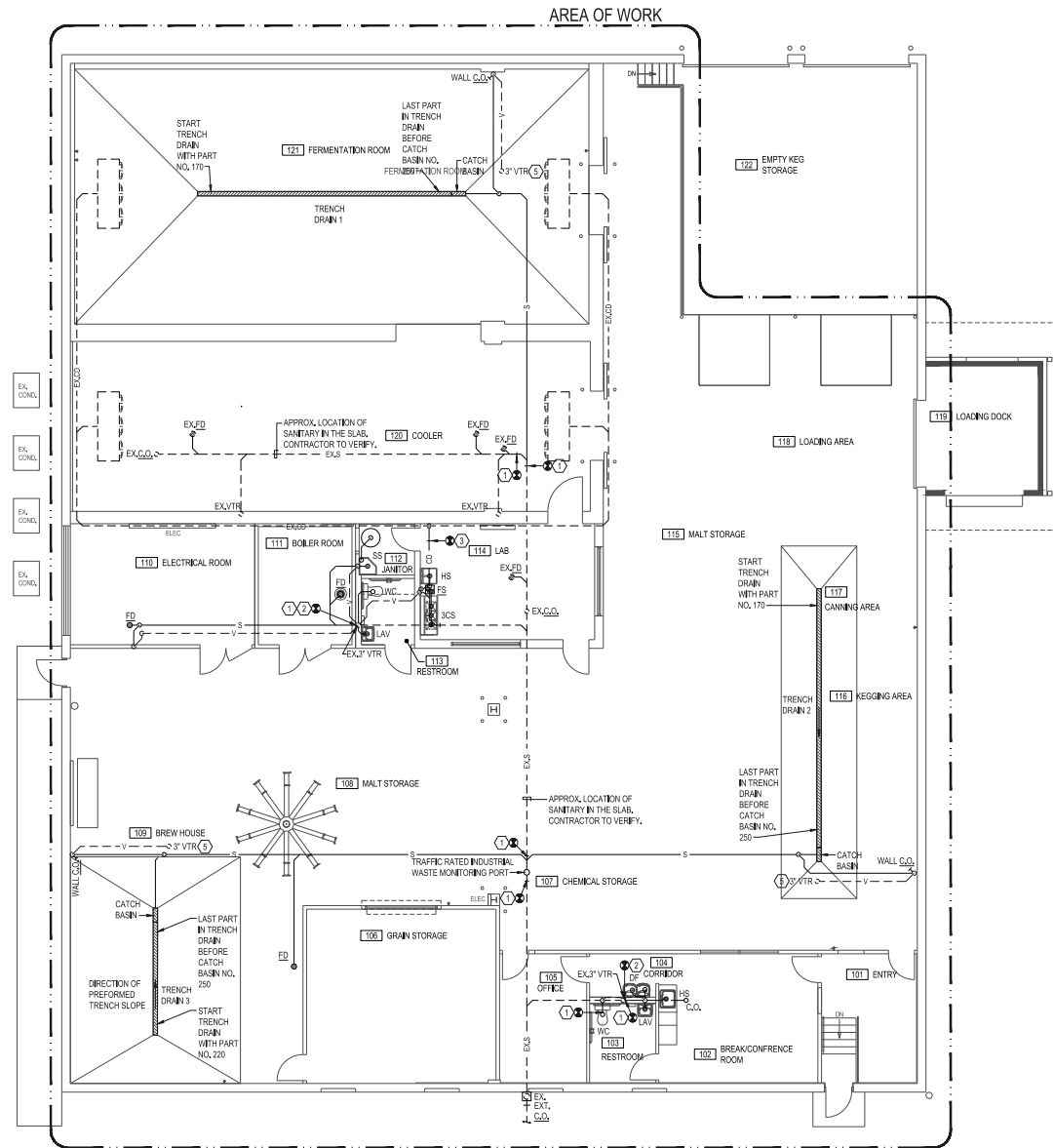
JIM CARONNA

jcaronna@klnb.com | 443-632-2070

BEN BROOKS

bbrooks@klnb.com | 443-632-2048





Plumbing Plan

FOR MORE INFORMATION, PLEASE CONTACT:

JIM CARONNA, SIOR BEN BROOKS

jcaronna@kl**nb**.com bbrooks@kl**nb**.com

443-632-2070 443-752-6637

100 West Road, Suite 505, Towson, MD 21204

.....

klnb**.com**



[instagram.com/kl**nb**cre](https://www.instagram.com/klnbcre)



[linkedin.com/company/kl**nb**](https://www.linkedin.com/company/klnb)



[facebook.com/KLNBCRE](https://www.facebook.com/KLNBCRE)

CLICK TO VIEW PROPERTY WEBSITE