



OFFICE FOR SUBLEASE

AVAILABILITY

- 1,700 - 8,192 SF
- Rate: \$25.00 PSF FS
- Sublease Term Thru 6/30/2028

PROPERTY HIGHLIGHTS

- Nicely finished office sublease with a combination of private offices and open area
- Separate private training room
- Numerous food, lodging, banking and retail amenities in close proximity including The Mosaic District.
- Abundant Parking
- Immediate Occupancy
- Furniture can convey

MARC TASKER, CCIM, SIOR

mtasker@klnb.com | 703-268-2735

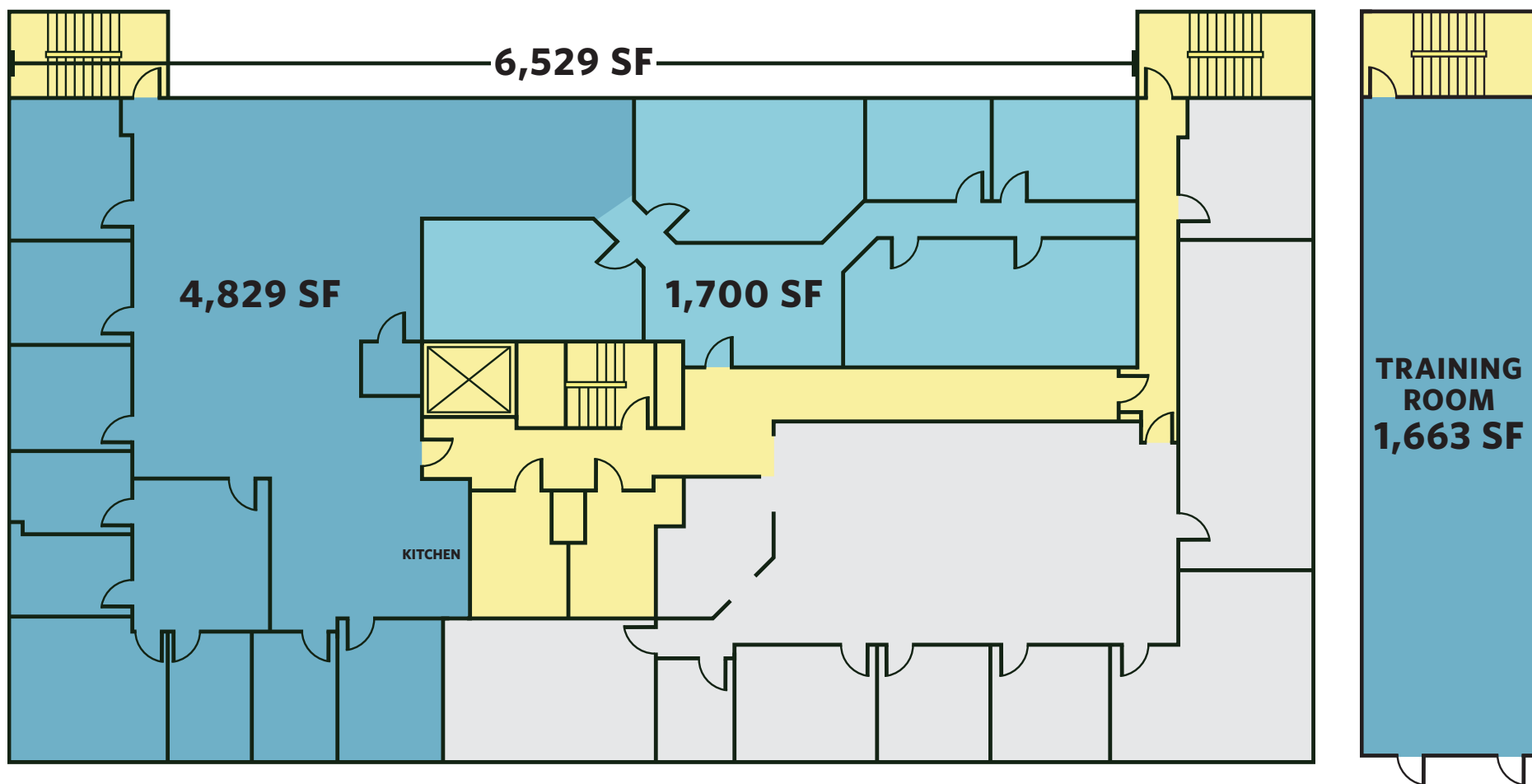
KEENAN WOOFER

kwoofter@klnb.com | 703-268-2744

FLOOR PLAN

2890 EMMA LEE STREET

FALLS CHURCH, VA 22042, FAIRFAX COUNTY



AVAILABLE

COMMON AREAS

MARC TASKER, CCIM, SIOR
mtasker@klnb.com | 703-268-2735

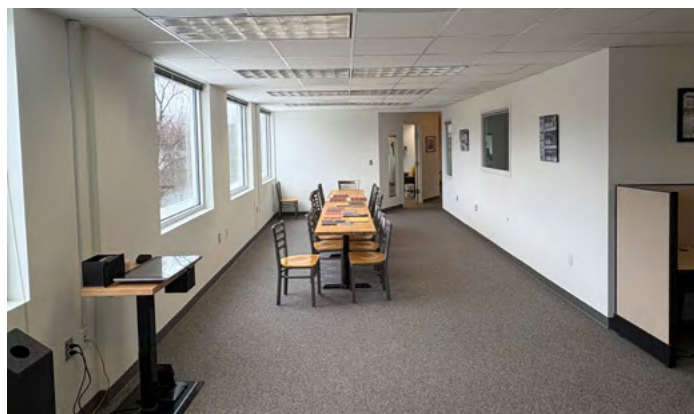
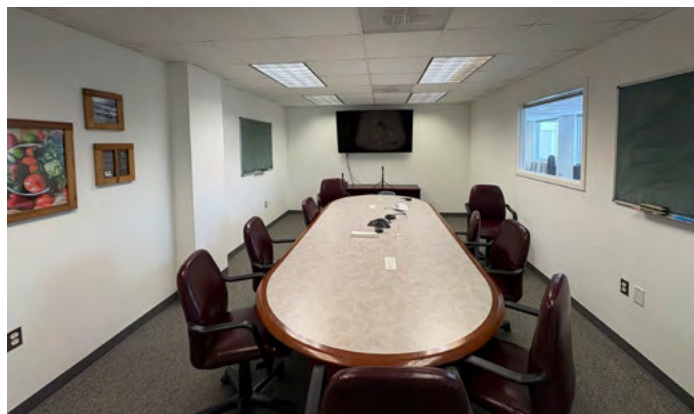
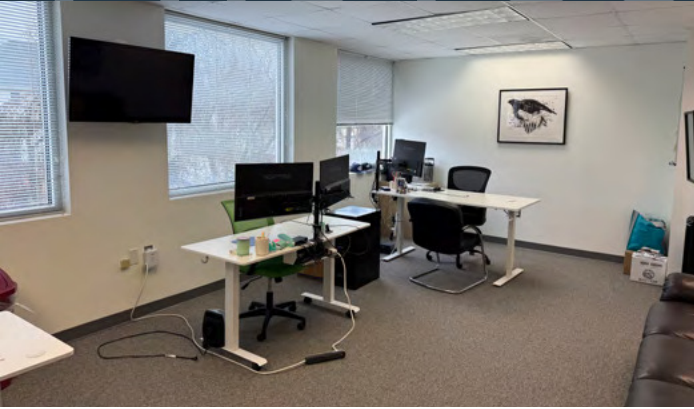
KEENAN WOOFER
kwoofte@klnb.com | 703-268-2744

NAklnb

PHOTOS

2890 EMMA LEE STREET

FALLS CHURCH, VA 22042, FAIRFAX COUNTY



MARC TASKER, CCIM, SIOR
mtasker@klnb.com | 703-268-2735

KEENAN WOOFER
kwoofter@klnb.com | 703-268-2744

NA klnb

Merrifield
Fairfax County | Virginia

klnb

While we have no reason to doubt the accuracy of any of the information supplied, we cannot, and do not, guarantee its accuracy.

DUNN LORING

IDYLWOOD

2890 EMMA LEE ST

Lee Hwy

MERRIFIELD

WEST FALLS CHURCH

DOLLAR TREE

THE SHOPS AT AVENIR

Harris Teeter
Tropical CAFE
JASON MARR

M metro
DUNN LORING
MERRIFIELD

AVALLON DUNN LORING
HOTWORX
DUNKIN'

THE HOME DEPOT

MERRIFIELD PLAZA

MART
Arby's
LIDL

PAN AM SHOPPING CENTER

SAFeway
Michaels
CVS pharmacy

M metro
VIENNA

SCOUT ON THE CIRCLE

Giant

MOSAIC DISTRICT

target
XSPORT FITNESS
MOM
sweetgreen
ANTHROPOLOGIE
BULLETIN
matchbox
TRUE FOOD KITCHEN
south moon under

CVS pharmacy

unique
FAIRFAX PLAZA

SAFeway

COMPASS COFFEE
THE SHOPS AT WEST FALLS CHURCH

GRANHAM PARK

Giant
Phenix Salon Suites
PNC
ABC

ALDI

CVS pharmacy
YORKTOWN PLAZA

Inova
FAIRFAX HOSPITAL



2890 EMMA LEE STREET

FALLS CHURCH, VA 22042, FAIRFAX COUNTY

FOR MORE INFORMATION, PLEASE CONTACT:

MARC TASKER, CCIM, SIOR

mtasker@klnb.com

703-268-2735

KEENAN WOOFER

kwoofter@klnb.com

703-268-2744

8065 Leesburg Pike, Suite 700, Tysons, VA 22182

.....

klnb.com



instagram.com/klnbcre



linkedin.com/company/klnb



facebook.com/KLNBCRE

CLICK TO VIEW PROPERTY WEBSITE

While we have no reason to doubt the accuracy of any of the information supplied, we cannot, and do not, guarantee its accuracy. All information should be independently verified prior to a purchase or lease of the property. We are not responsible for errors, omissions, misuse, or misinterpretation of information contained herein and make no warranty of any kind, express or implied, with respect to the property or any other matters.