

2305 HANOVER PIKE

Hampstead, MD 21074
Carroll County



NEARBY RETAILERS

Walmart  **weis**

 **CVS**  **DOLLAR TREE**

Advance  **Auto Parts**  **AutoZone**

RETAIL FOR LEASE

- 3,066 SF three lane drive-thru opportunity
- Located at signalized intersection
- 1.18 Acres
- Immediately between Weis Markets and Walmart

LEASED BY:

klnb

Michael Ginsburg
mginsburg@klnb.com
443-632-2041

100 West Road, Suite 505, Towson, MD 21204
klnb.com

2305 HANOVER PIKE

Hampstead, MD 21074
Carroll County



TRAFFIC COUNTS | 2023

Hanover Pike [MD-30]

18,544 ADT

1-MILE

3-MILES

5-MILES



Population
1,353

16,939

28,244



Households
484

6,443

10,623



Daytime Population
2,138

13,128

20,338



Average Household Income
\$138,415

\$130,511

\$132,821

Michael Ginsburg
mginsburg@klnb.com
443-632-2041

100 West Road, Suite 505
Towson, MD 21204
klnb.com



2305 HANOVER PIKE

Hampstead, MD 21074
Carroll County

MIDVIEW AERIAL



Michael Ginsburg
mginsburg@klnb.com
443-632-2041

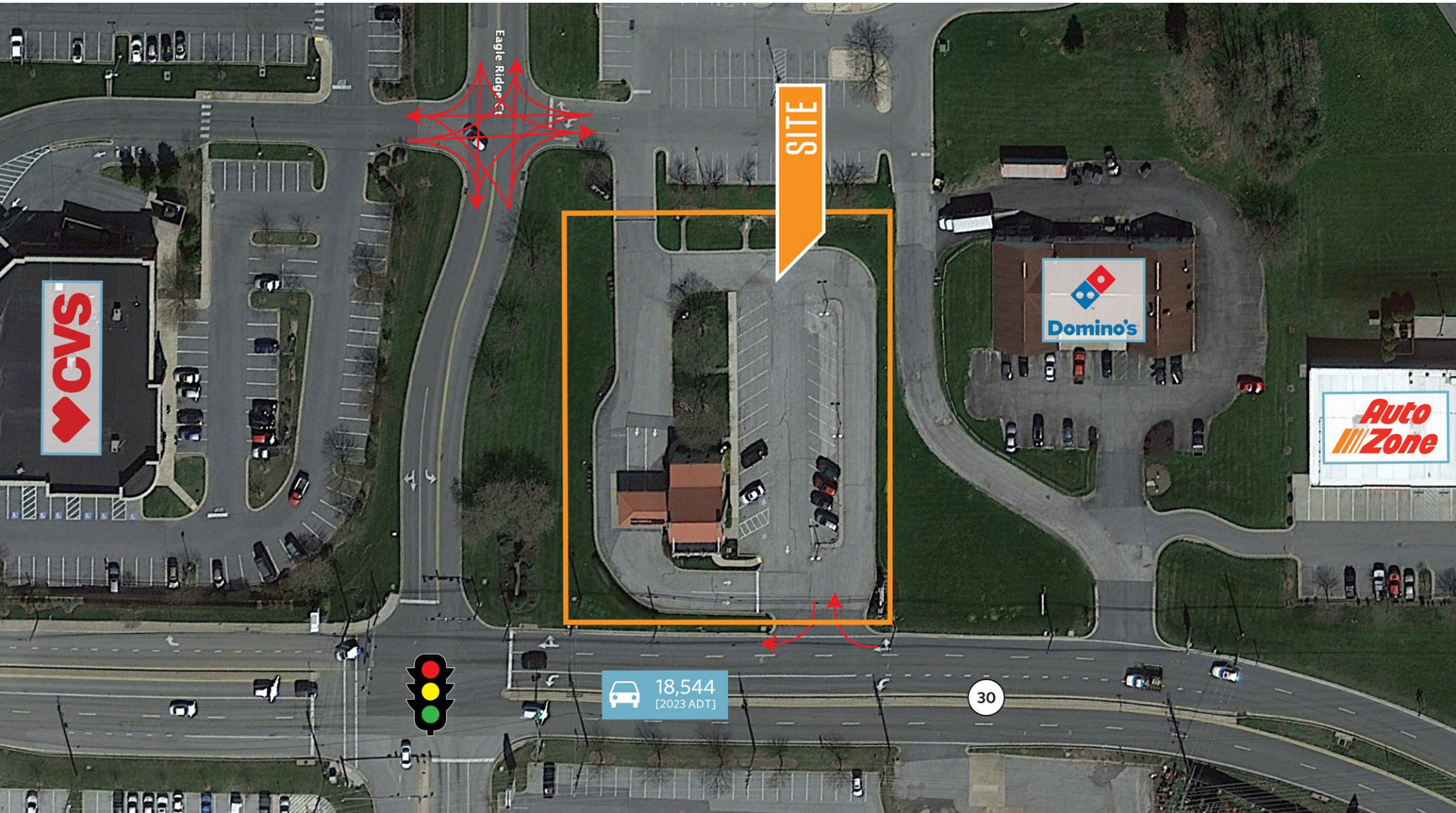
100 West Road, Suite 505
Towson, MD 21204
klnb.com

klnb

2305 HANOVER PIKE

Hampstead, MD 21074
Carroll County

CLOSE-UP AERIAL



Michael Ginsburg
mginsburg@klnb.com
443-632-2041

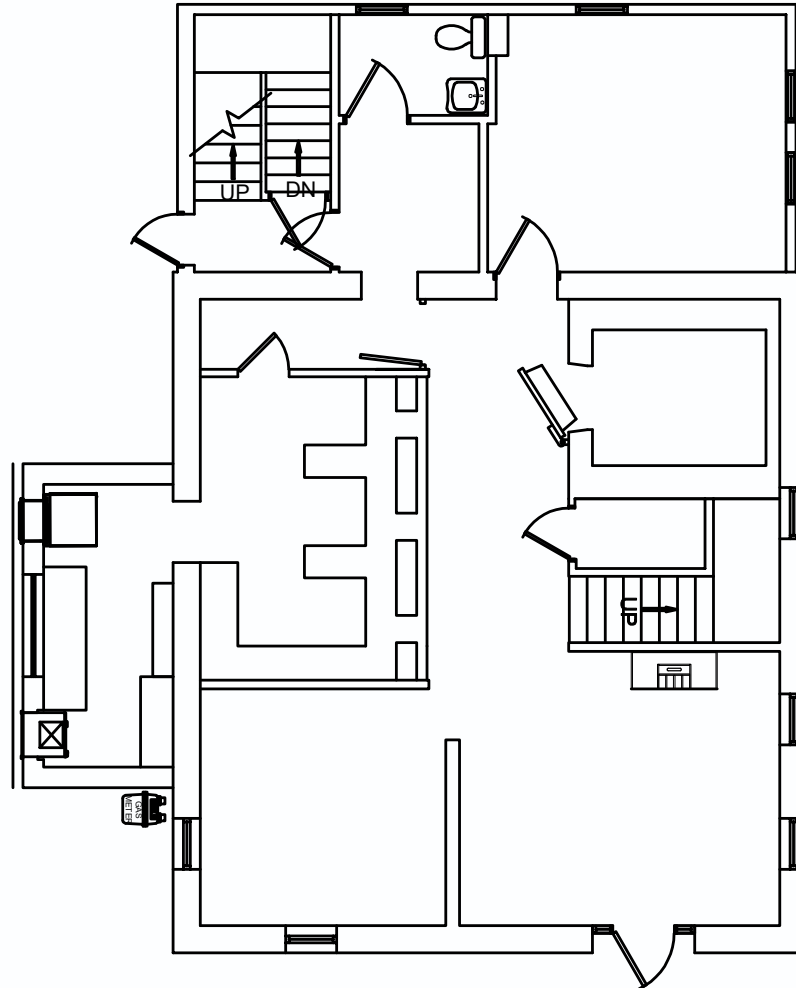
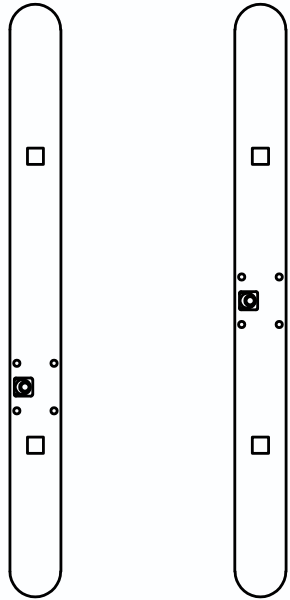
100 West Road, Suite 505
Towson, MD 21204
klnb.com

klnb

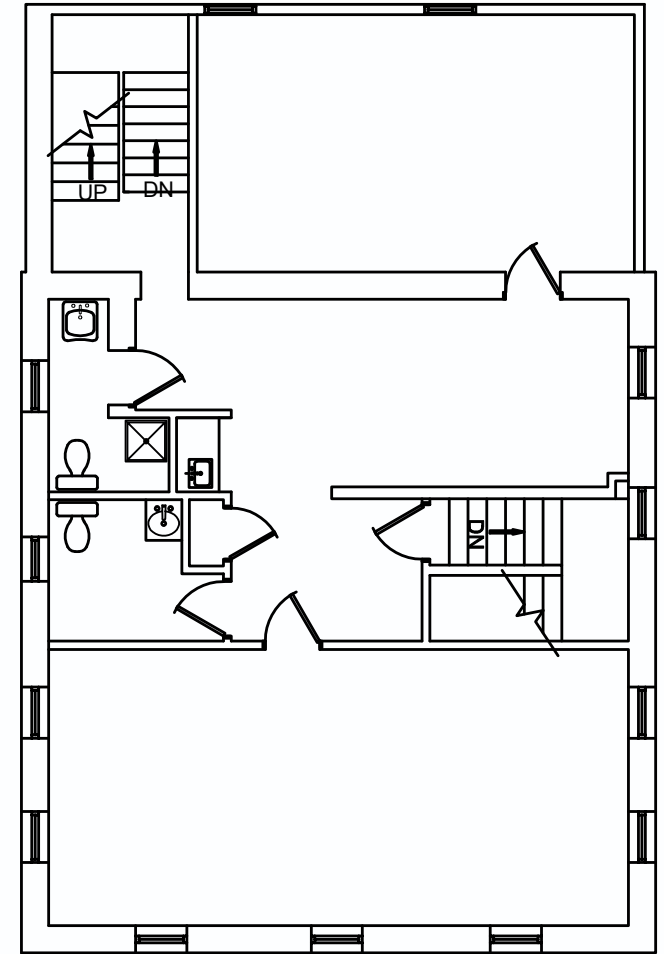
2305 HANOVER PIKE

Hampstead, MD 21074
Carroll County

FLOOR PLAN



HAMPSTEAD
FIRST FLOOR



HAMPSTEAD
SECOND FLOOR

2305 HANOVER PIKE

Hampstead, MD 21074

Carroll County

[CLICK TO VIEW PROPERTY WEBSITE](#)

For More Information, Please Contact:

Michael Ginsburg
mginsburg@klnb.com
443-632-2041



While we have no reason to doubt the accuracy of any of the information supplied, we cannot, and do not, guarantee its accuracy. All information should be independently verified prior to a purchase or lease of the property. We are not responsible for errors, omissions, misuse, or misinterpretation of information contained herein and make no warranty of any kind, express or implied, with respect to the property or any other matters.

100 West Road, Suite 505
Towson, MD 21204
klnb.com

