

DELIVERING Q3 2025

*the*  
**MERCURY**

AT WILDWOOD SHOPPING CENTER

10339 OLD GEORGETOWN RD, BETHESDA, MD

60 APARTMENT UNITS

10,093 SF OF RETAIL / RESTAURANT



MATT SKALET | 202-420-7775 | MSKALET@KLNb.COM

BEN BECKER | 202-420-7773 | BBECKER@KLNb.COM

**kl**n**b**





## SITE DETAILS

- New mixed use project adjacent to Bethesda's high-end Wildwood
- 60 new apartments above 3 retail units totaling 10,093 SF
  - Space 1: 3,961 SF with Type 1 Restaurant Venting
  - Space 2A: 1,232 SF At Lease
  - Space 2B: 1,643 SF At Lease
  - Space 3: 3,257 SF At Lease
- 60 dedicated retail garage parking spaces plus 114 common surface parking spaces
- Monument signage available on Old Georgetown Road
- Q3 2025 Delivery

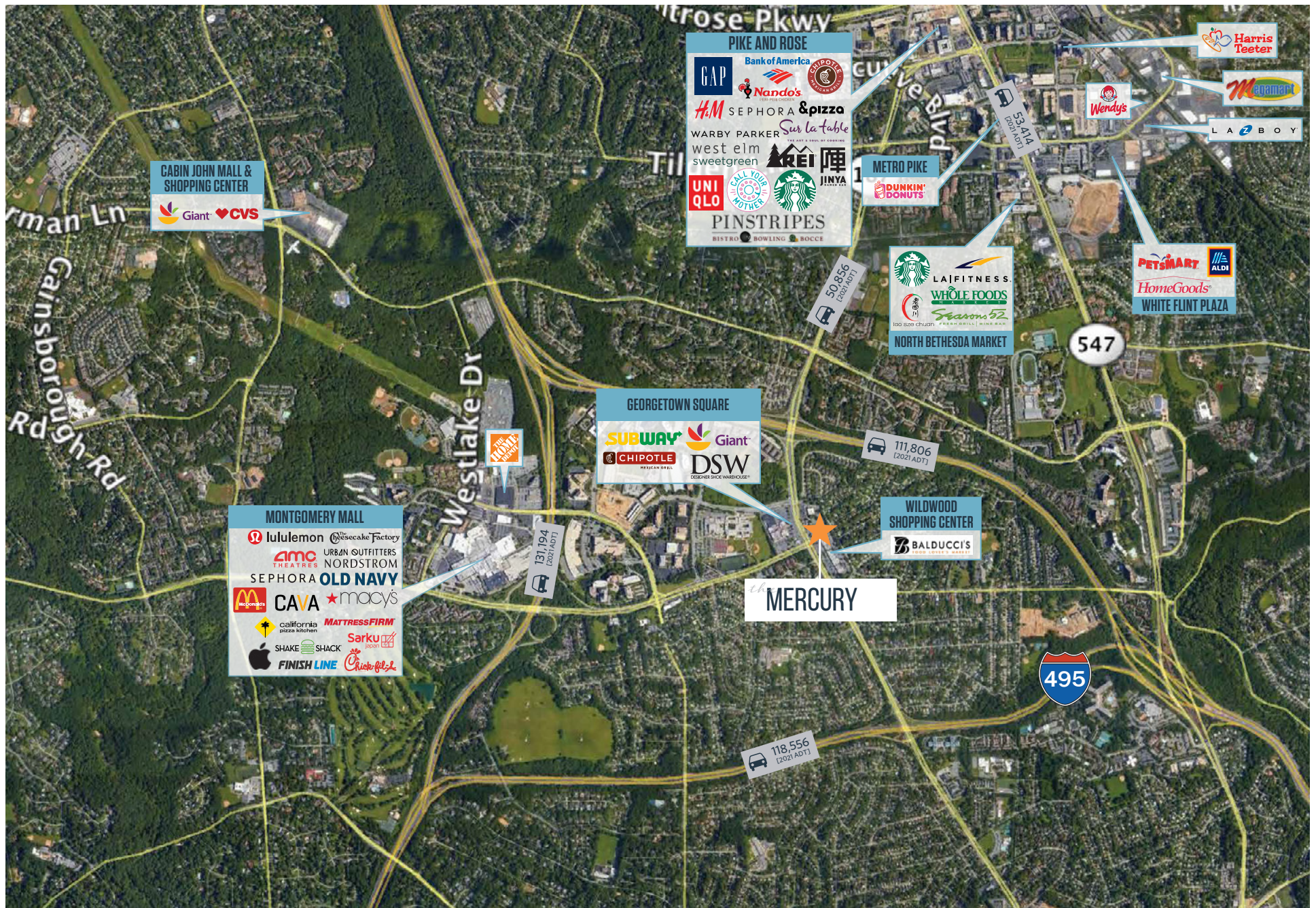
## 2023 DEMOGRAPHICS

	1 Mile	3 Mile	5 Mile	10 Min Drive
Average HH Income	\$218,363	\$211,339	\$208,799	\$226,825
Population	19,390	137,937	376,195	117,736
Daytime Population	26,169	202,318	446,811	178,251
Households	8,076	56,160	142,656	49,228
College Educated	78%	77%	69%	79%

## JOIN:

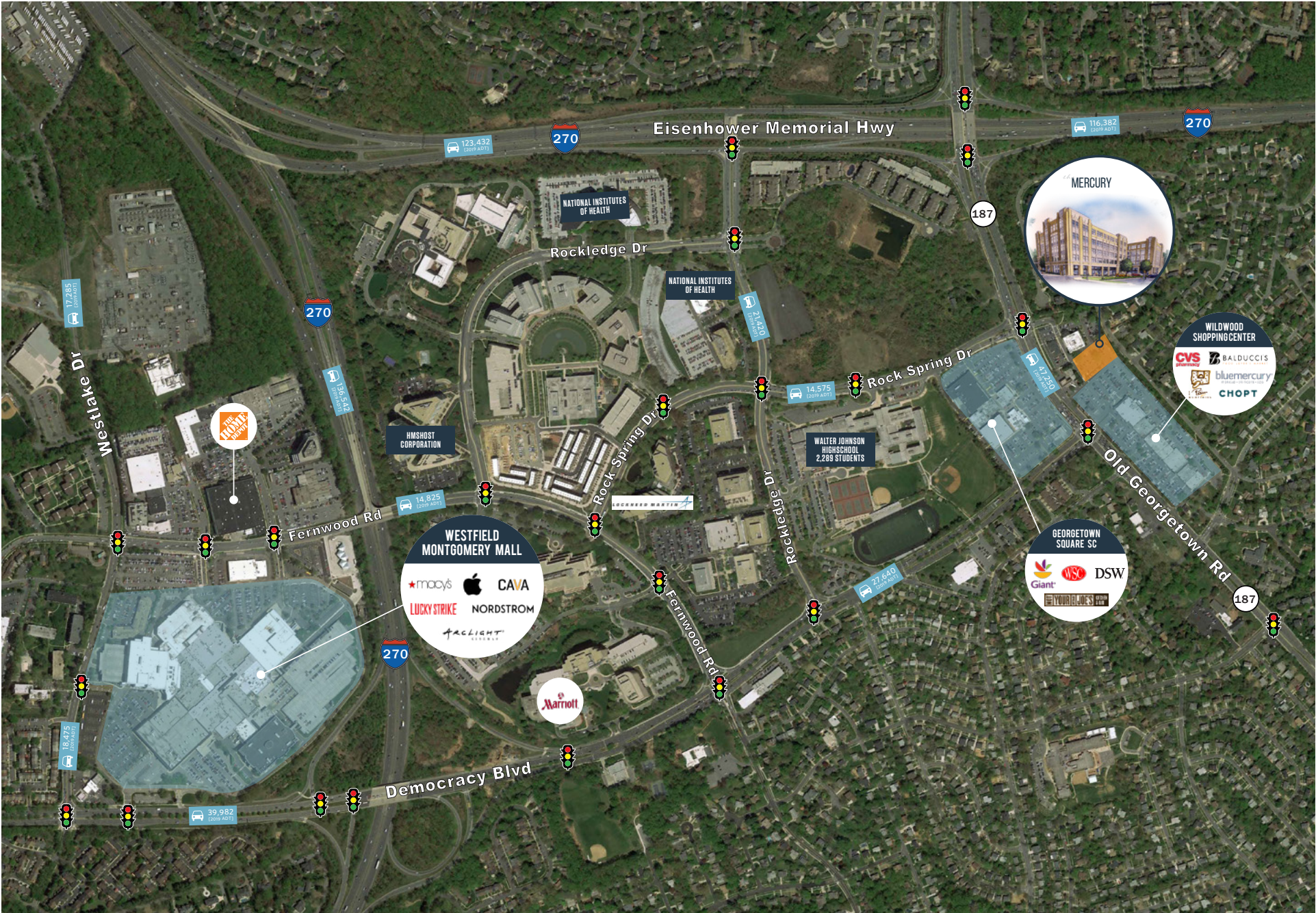








the NEIGHBORHOOD



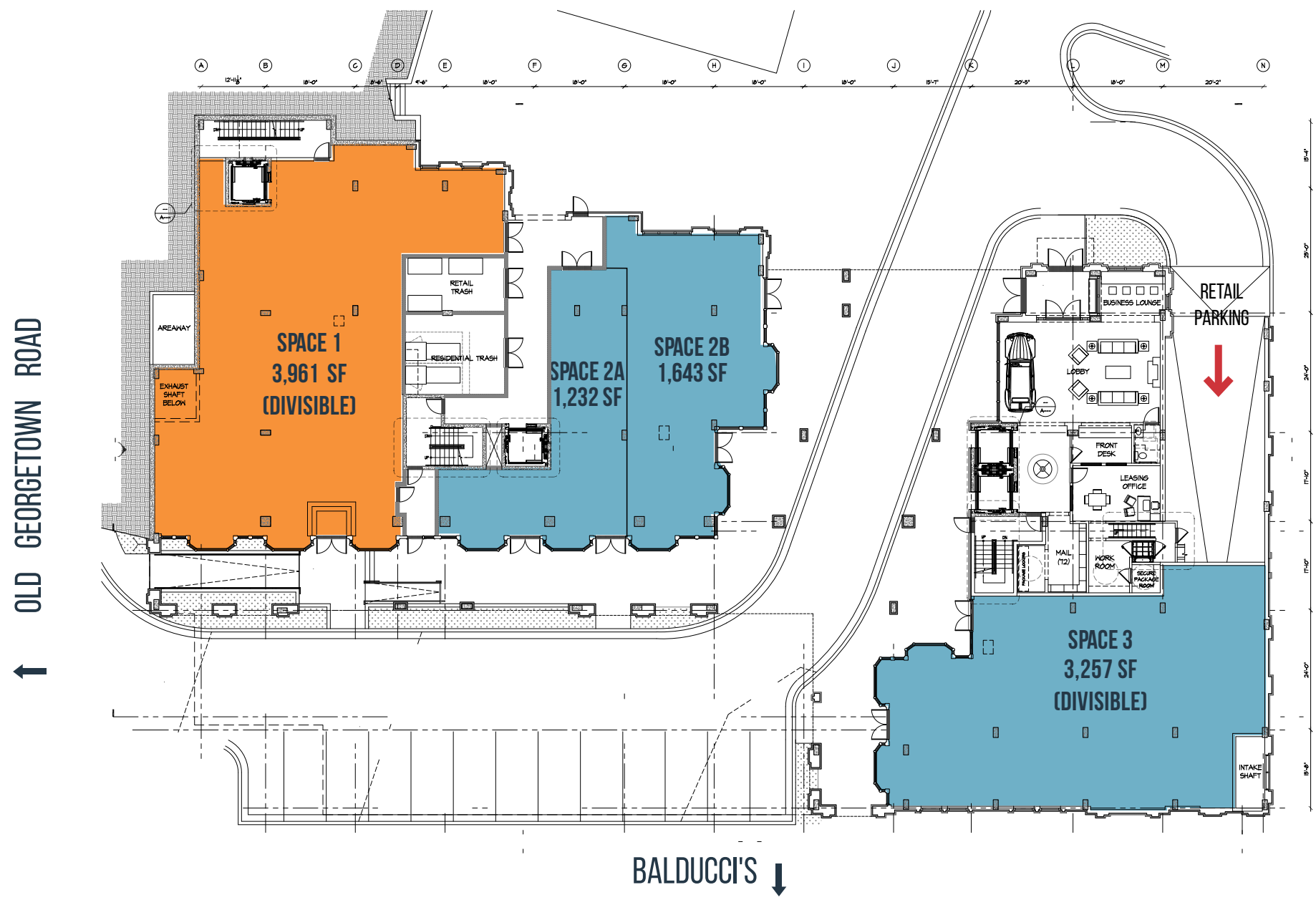


# the DEVELOPMENT



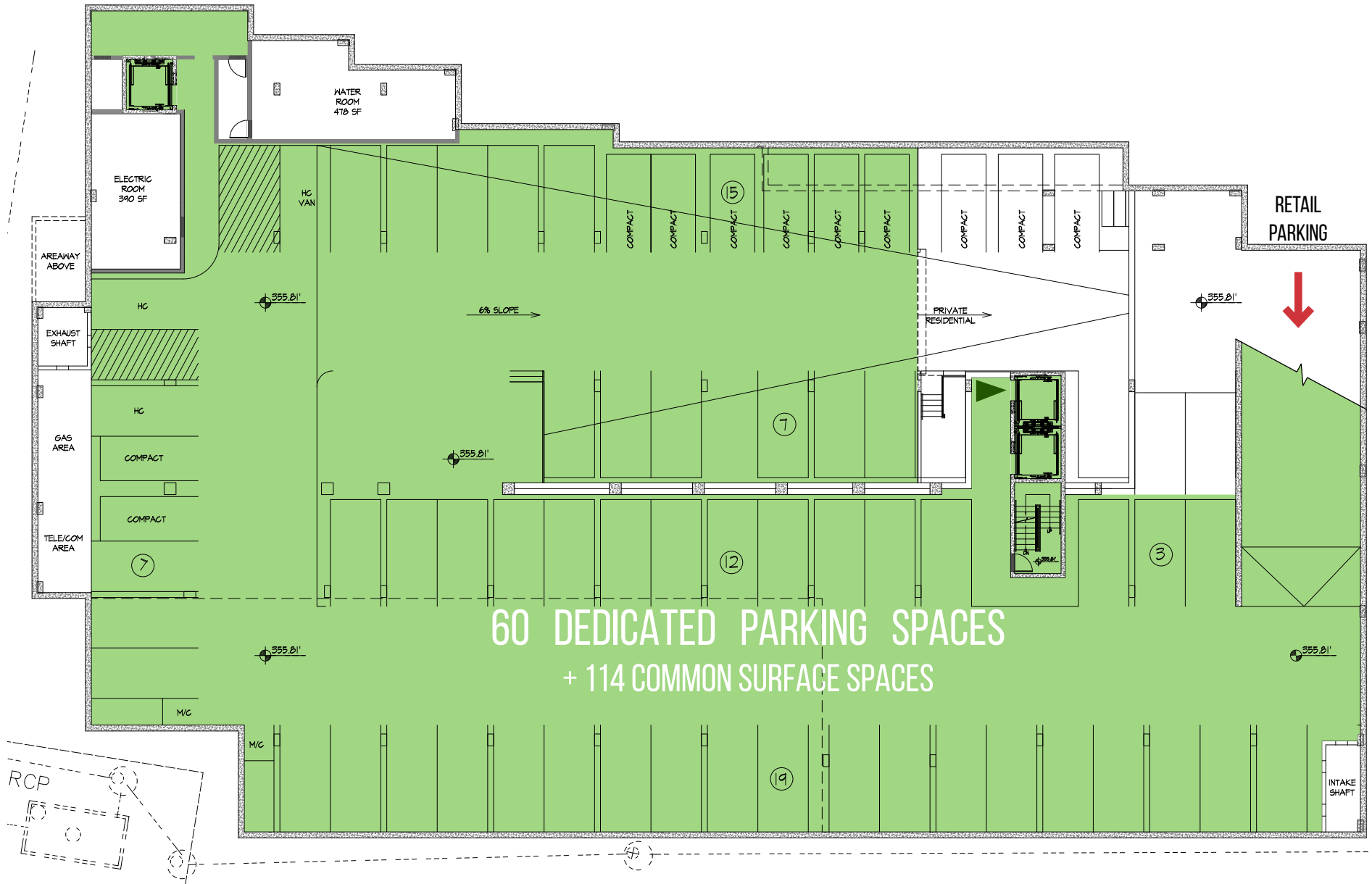


AT LEASE AVAILABLE





# the PARKING







# *the* MERCURY

AT WILDWOOD SHOPPING CENTER | BETHESDA, MD

kl**nb**

MATT SKALET | 202-420-7775 | [MSKALET@KLNb.COM](mailto:MSKALET@KLNb.COM)

BEN BECKER | 202-420-7773 | [BBECKER@KLNb.COM](mailto:BBECKER@KLNb.COM)

While we have no reason to doubt the accuracy of any of the information supplied, we cannot, and do not, guarantee its accuracy. All information should be independently verified prior to a purchase or lease of the property. We are not responsible for errors, omissions, misuse, or misinterpretation of information contained herein and make no warranty of any kind, express or implied, with respect to the property or any other matters