



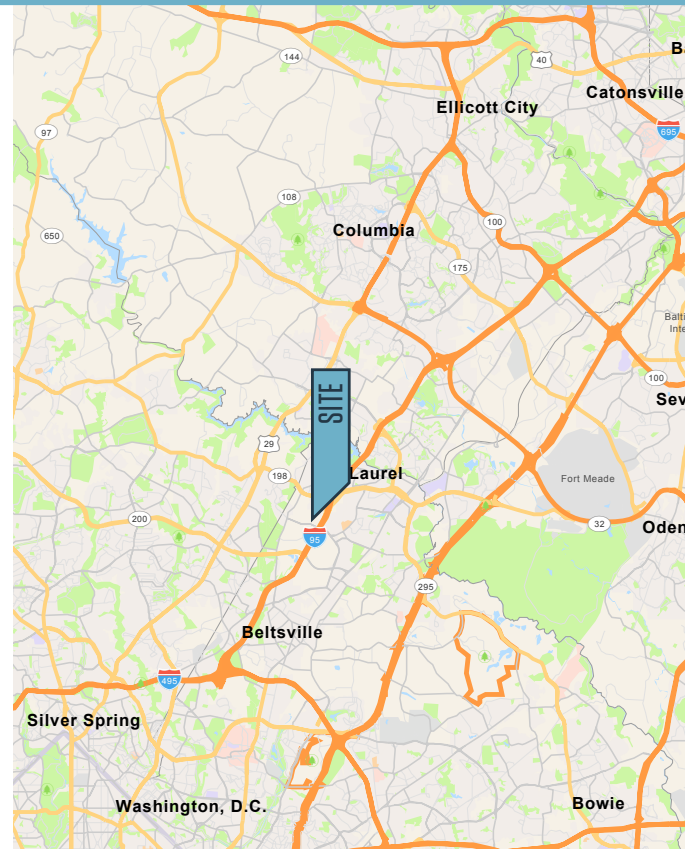
OFFICE FOR LEASE

AVAILABLE SUITES:

- **Suite 101:** 2,715 square feet
- **Suite 105:** 2,092 square feet

PROPERTY HIGHLIGHTS:

- Well maintained, two-story office building
- **Rental Rate:** \$20.00/SF + utilities & cleaning
- **Parking:** Ample free surface parking
- **Access:** Two minutes from I-95; easy access to Routes 198, 29 and 1

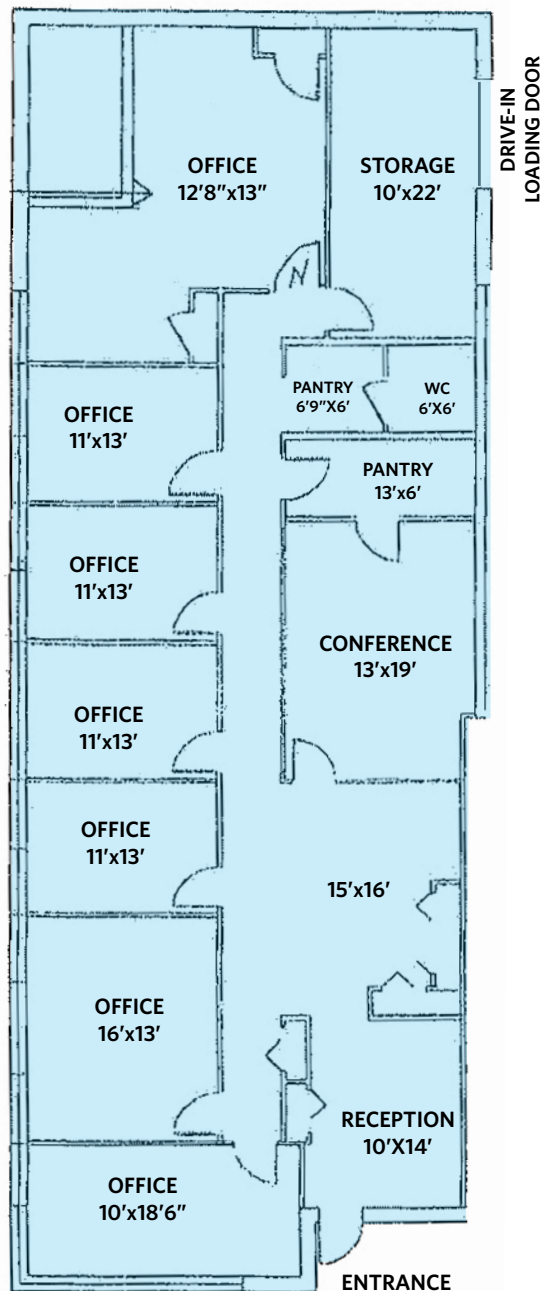


14900 SWEITZER LANE

Laurel, MD 20707 | Prince George's County

FIRST FLOOR PLANS

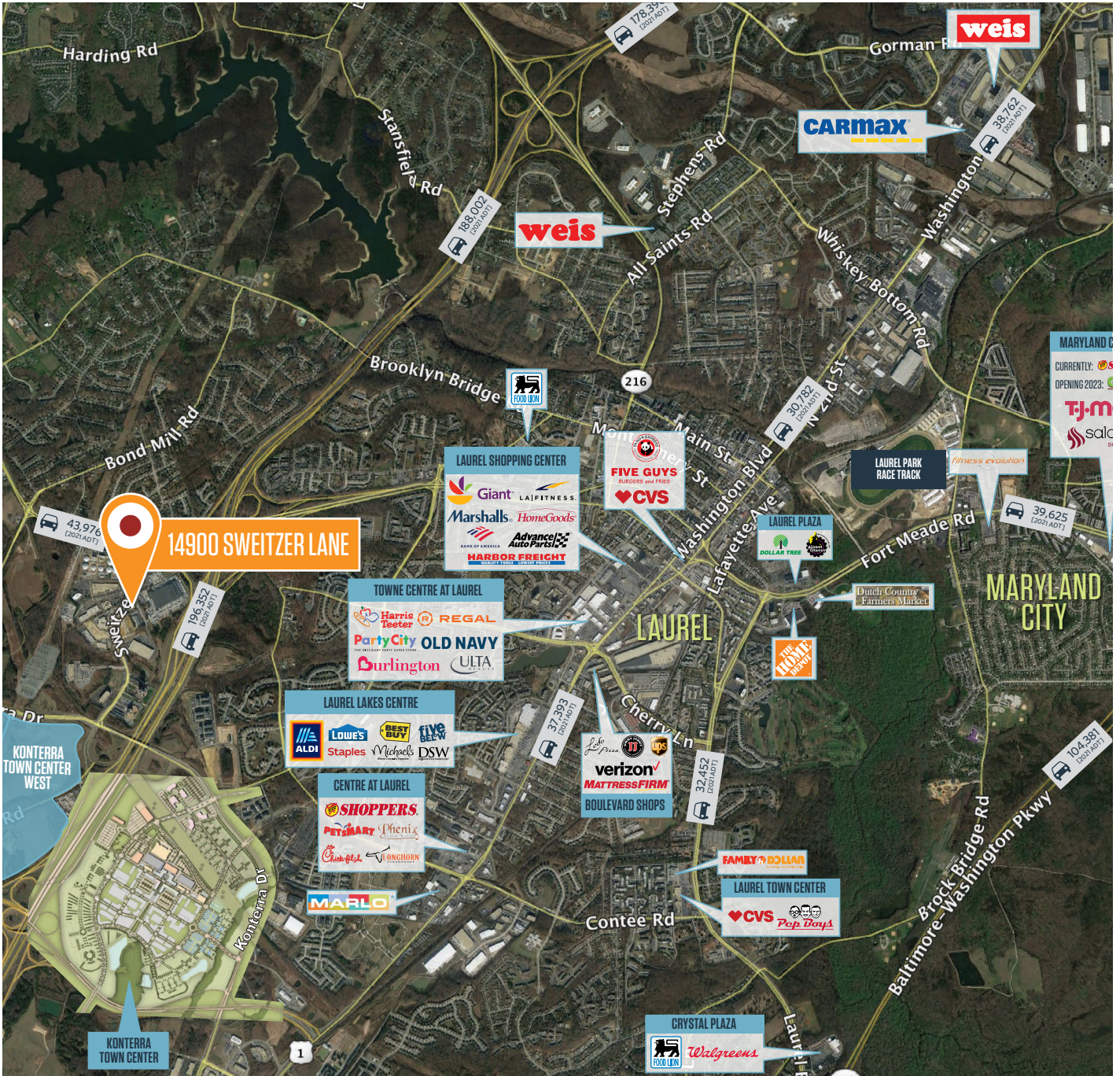
SUITE 101 2,715 SF



Chuck Breitenother
cbreitenother@klnb.com
443-574-1422

Abby Glassberg
aglassberg@klnb.com
443-574-1433

MARKET AERIAL



While we have no reason to doubt the accuracy of any of the information supplied, we cannot, and do not, guarantee its accuracy. All information should be independently verified prior to a purchase or lease of the property. We are not responsible for errors, omissions, misuse, or misinterpretation of information contained herein and make no warranty of any kind, express or implied, with respect to the property or any other matters.

14900 SWEITZER LANE
Laurel, MD 20707 | Prince George's County



CLICK TO VIEW PROPERTY WEBSITE

For More Information, Please Contact:

Chuck Breitenother

cbreitenother@klnb.com

443-574-1422

Abby Glassberg

aglassberg@klnb.com

443-574-1433

9881 Broken Land Parkway, Suite 300
Columbia, MD 21046

klnb.com



[instagram.com/klnbcre](https://www.instagram.com/klnbcre)



[linkedin.com/company/klnb](https://www.linkedin.com/company/klnb)



[facebook.com/KLNBCRE](https://www.facebook.com/KLNBCRE)

While we have no reason to doubt the accuracy of any of the information supplied, we cannot, and do not, guarantee its accuracy. All information should be independently verified prior to a purchase or lease of the property. We are not responsible for errors, omissions, misuse, or misinterpretation of information contained herein and make no warranty of any kind, express or implied, with respect to the property or any other matters.

