



GIRARD BUSINESS CENTER

200 Girard Street, Gaithersburg, MD 20877
220 Girard Street, Gaithersburg, MD 20877
504 E Diamond Ave, Gaithersburg, MD 20877



FLEX SPACE FOR LEASE

KENNETH FELLOWS
kfellows@klnb.com
301-222-0210

ROBERT PUGH
rpugh@klnb.com
301-222-0211

KEIRY MARTINEZ
kmartinez@klnb.com
703-334-5629

klnb.com

GERMANTOWN



GIRARD BUSINESS CENTER

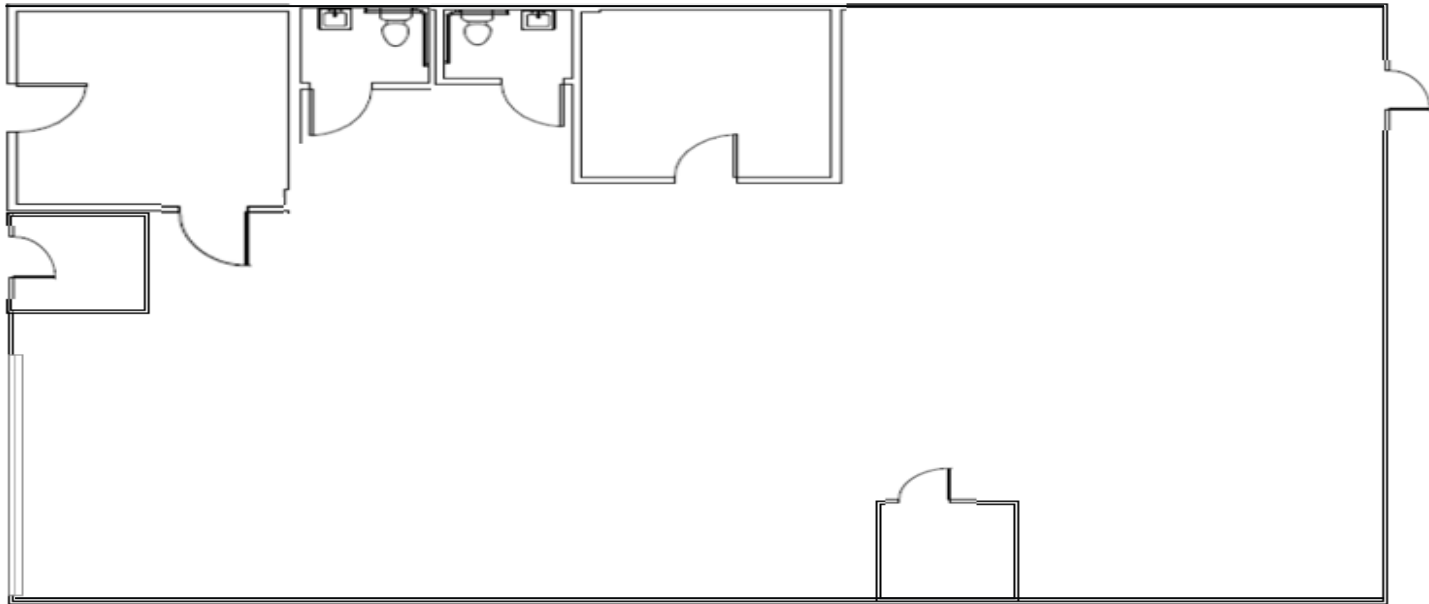
KENNETH FELLOWS
kfellows@klnb.com
301-222-0210

ROBERT PUGH
rpugh@klnb.com
301-222-0211

KEIRY MARTINEZ
kmartinez@klnb.com
703-334-5629



SUITE 203
2,992 SF



FLOOR PLAN

GIRARD BUSINESS CENTER

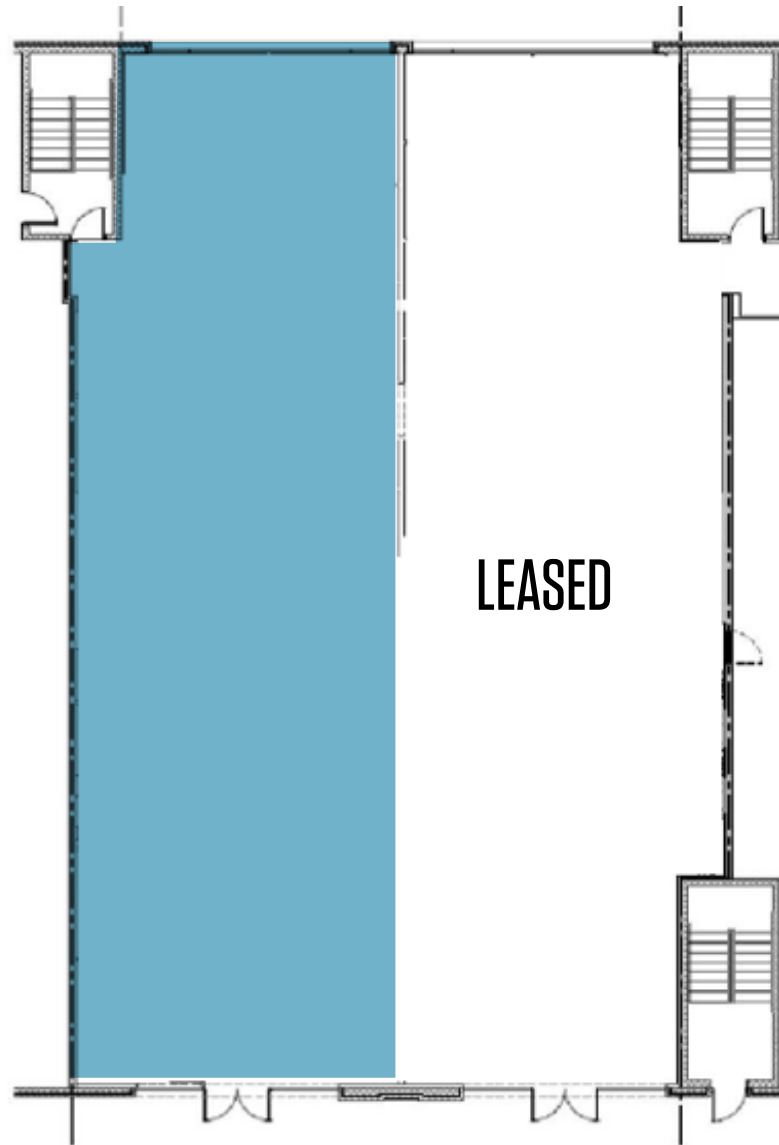
KENNETH FELLOWS
kfellows@klnb.com
301-222-0210

ROBERT PUGH
rpugh@klnb.com
301-222-0211

KEIRY MARTINEZ
kmartinez@klnb.com
703-334-5629

klnb

SUITE 210
3,000 SF



FLOOR PLAN

GIRARD BUSINESS CENTER

KENNETH FELLOWS
kfellows@klnb.com
301-222-0210

ROBERT PUGH
rpugh@klnb.com
301-222-0211

KEIRY MARTINEZ
kmartinez@klnb.com
703-334-5629

klnb



GIRARD BUSINESS CENTER

200-220 Girard Street, Gaithersburg, MD 20877
504 E Diamond Ave, Gaithersburg, MD 20877

CONTACT

KENNETH FELLOWS
kfellows@klnb.com
301-222-0210

ROBERT PUGH
rpugh@klnb.com
301-222-0211

KEIRY MARTINEZ
kmartinez@klnb.com
703-334-5629

12435 Park Potomac Ave, Suite 250,
Rockville, MD, 20854

klnb.com

VISIT PROPERTY WEBSITE



While we have no reason to doubt the accuracy of any of the information supplied, we cannot, and do not, guarantee its accuracy. All information should be independently verified prior to a purchase or lease of the property. We are not responsible for errors, omissions, misuse, or misinterpretation of information contained herein and make no warranty of any kind, express or implied, with respect to the property or any other matters.