



## JOIN THESE RETAILERS



## RETAIL FOR LEASE

- 1,085 SF - 5,168 SF Available
- Within close proximity to a well-performing Aldi grocery store
- Located at the busy intersection of Queens Chapel Road [34,685 ADT] and Hamilton Street [12,625 ADT]
- Adjacent to West Hyattsville Metro Station [2,801 ADR]
- Ample free surface parking

**ALEX SHEARER**

ashearer@klnb.com | 443-632-2081

**RYAN MINNEHAN**

rminnehan@klnb.com | 443-632-2088

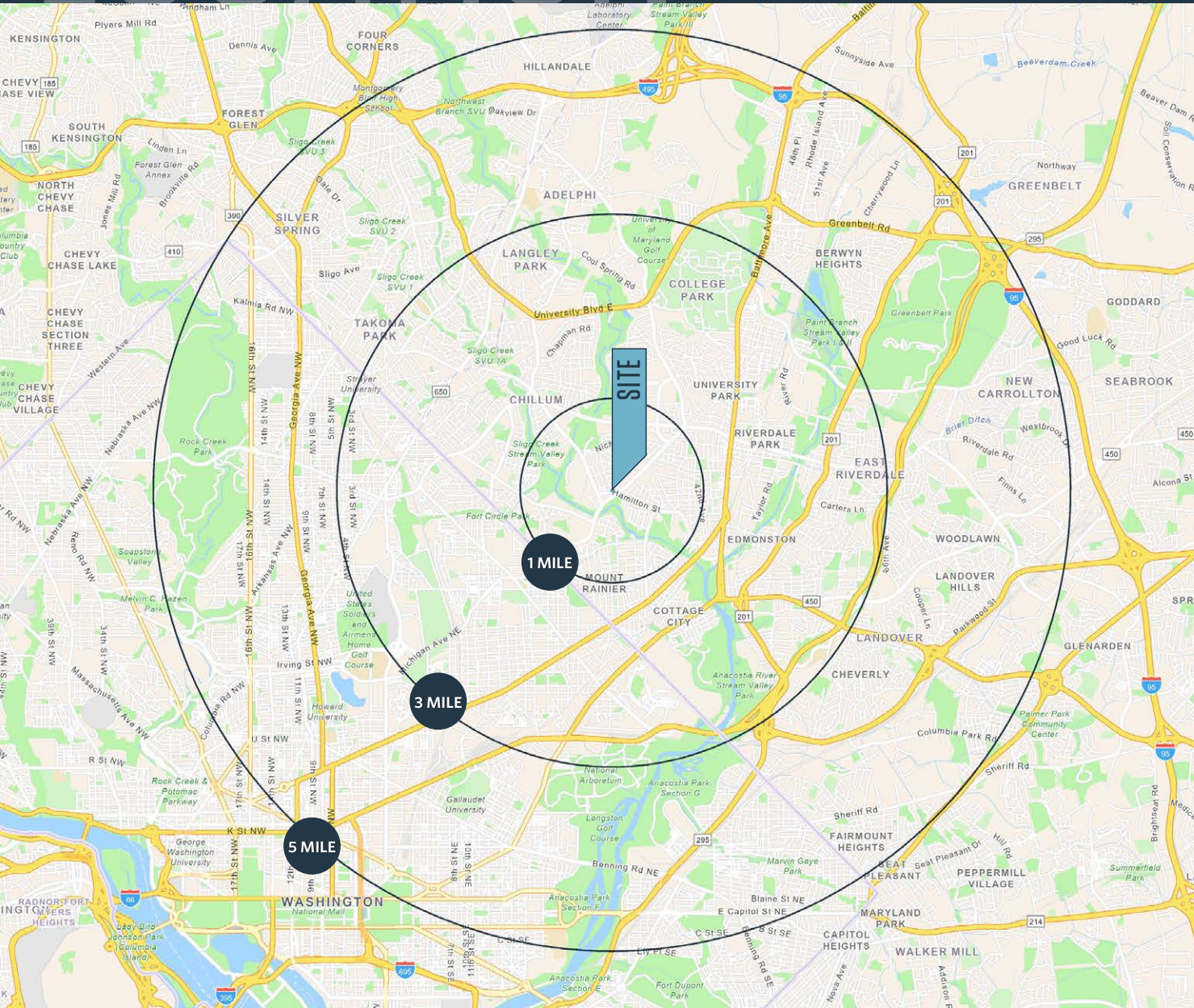
**MASON BERNSTEIN**

mbernstein@klnb.com | 443-632-2089

# LOCATION

# QUEENS CHAPEL TOWN CENTER

3100 HAMILTON ST, HYATTSVILLE, MD 20782, PRINCE GEORGE'S COUNTY



## PROPERTY HIGHLIGHTS:

- 1,085 SF  
[2nd Gen Juice Bar]
- 3,500 SF  
[Potentially Available]
- 5,168 SF

## DEMOGRAPHICS | 2024:

1-MILE	3-MILE	5-MILE
Population		
31,009	232,178	733,291
Daytime Population		
21,630	210,554	700,539
Households		
11,473	78,397	291,212
Average HH Income		
\$102,070	\$116,586	\$141,311

[CLICK TO DOWNLOAD DEMOGRAPHIC REPORT](#)

## TRAFFIC COUNTS | 2023:

Queens Chapel Road	34,685 ADT
Hamilton Street	12,625 ADT

**ALEX SHEARER**

ashearer@klnb.com | 443-632-2081

**RYAN MINNEHAN**

rminnehan@klnb.com | 443-632-2088

**MASON BERNSTEIN**

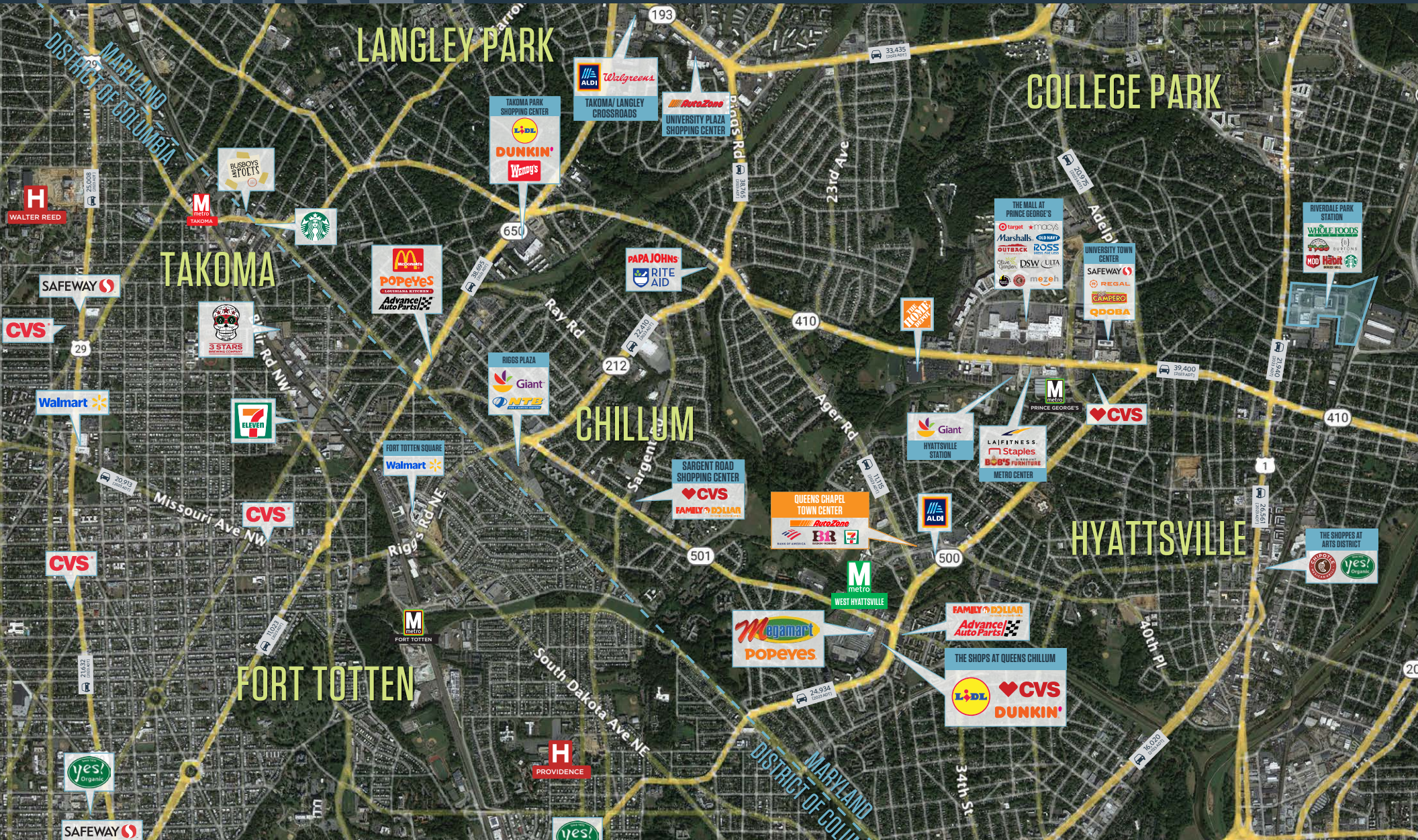
mbernstein@klnb.com | 443-632-2089



# MARKET

# QUEENS CHAPEL TOWN CENTER

3100 HAMILTON ST, HYATTSVILLE, MD 20782, PRINCE GEORGE'S COUNTY



**ALEX SHEARER**

ashearer@klnb.com | 443-632-2081

**RYAN MINNEHAN**

rminnehan@klnb.com | 443-632-2088

**MASON BERNSTEIN**

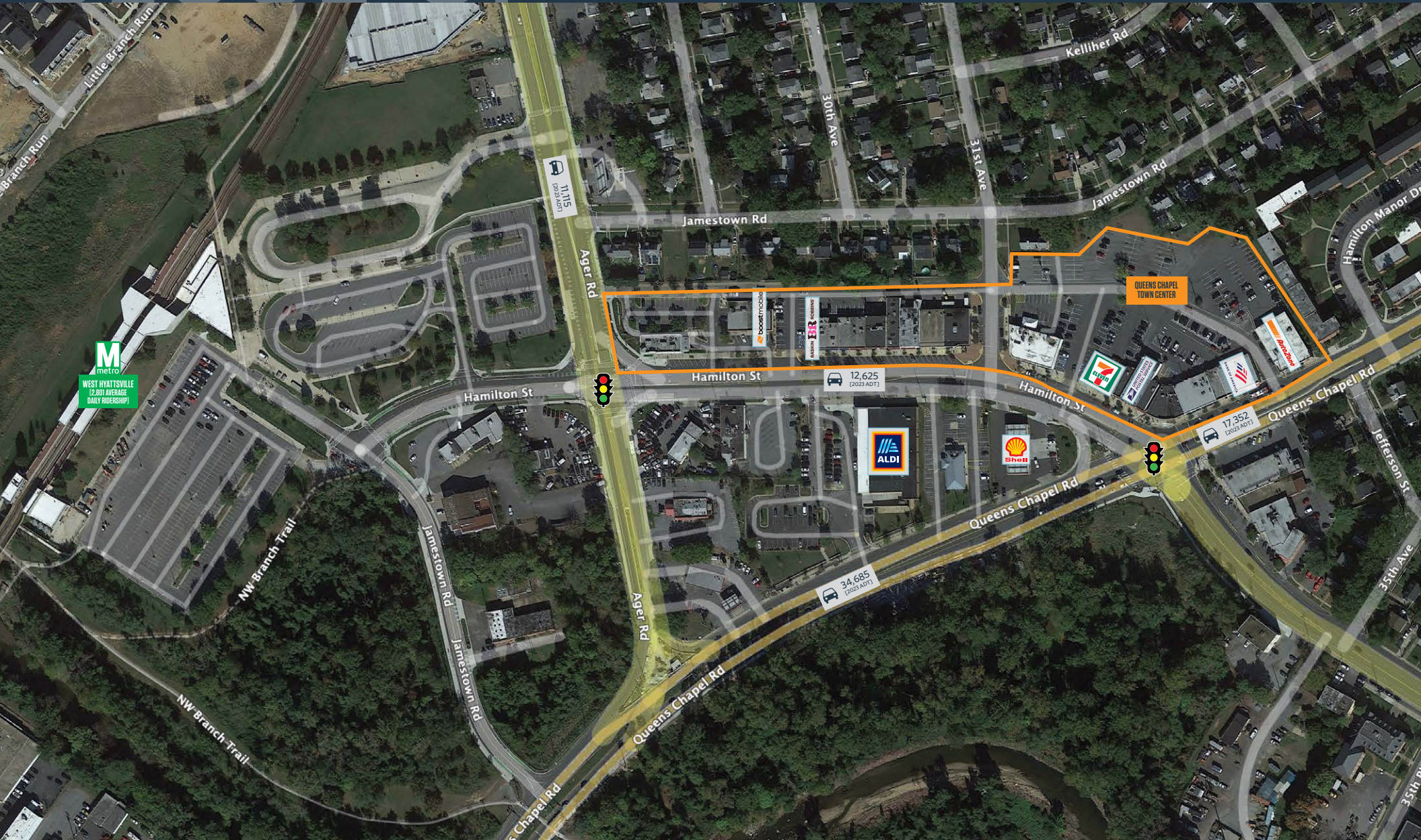
mbernstein@klnb.com | 443-632-2089



# CLOSE UP

# QUEENS CHAPEL TOWN CENTER

3100 HAMILTON ST, HYATTSVILLE, MD 20782, PRINCE GEORGE'S COUNTY



**ALEX SHEARER**

ashearer@klnb.com | 443-632-2081

**RYAN MINNEHAN**

rminnehan@klnb.com | 443-632-2088

**MASON BERNSTEIN**

mbernstein@klnb.com | 443-632-2089



# SITE PLAN

# QUEENS CHAPEL TOWN CENTER

3100 HAMILTON ST, HYATTSVILLE, MD 20782, PRINCE GEORGE'S COUNTY



TENANTS	Address	SF	Tenant Name	SF
5401		3,100 SF	H & CHICKEN	3030 AVAILABLE 5,168 SF
2906		1,270 SF	MI PUEBLITO BAKERY	3100 ACAPULCO RESTAURANT 2,887 SF
2908		1,166 SF	BOOST MOBILE	3104 EMMA'S DOLLAR STORE 976 SF
2910		2,224 SF	MARYLAND NEWS CENTER	3106 SALON TAZARA 1,006 SF
3004		1,406 SF	BASKIN ROBBINS	3108 BARBER SHOP 1,054 SF
3006		1,281 SF	CURZI'S SEAFOOD	3110 7/11 3,000 SF
3008		2,379 SF	CAFE TACUBA	3114 CHICHIE'S PET BOUTIQUE 930 SF
3012		960 SF	HAIR CLINIC	3116 US POSTAL SERVICE 4,653 SF
3014		1,260 SF	US CHECK CASHING	5400-A CASH DEPOT 1,750 SF
3016		892 SF	FRED'S PAWN SHOP	5400-B CENTURY CHINESE RESTAURANT 1,750 SF
3018		1,067 SF	CARD'S AFRICAN FABRICS	5402 DENTAL GROUP OF HYATTSVILLE 2,108 SF
3019		2,400 SF	MARYLAND PERFORMING ARTS	5406 AVAILABLE 2ND GEN JUICE BAR 1,085 SF
3020		2,500 SF	BONIVIA INTERNATIONAL FOODS	5408 EMERITAS PUPUSERIA 2,651 SF
3022		3,500 SF	POTENTIALLY AVAILABLE	5412 ED CONTRACTING 1,560 SF
3026		1,292 SF	HOUSE OF MUSIC	5414 BANK OF AMERICA 3,100 SF
3028		1,254 SF	ELEGANT NAILS	5418 AUTOZONE 7,100 SF

ALEX SHEARER

ashearer@klnb.com | 443-632-2081

RYAN MINNEHAN

rminnehan@klnb.com | 443-632-2088

MASON BERNSTEIN

mbernstein@klnb.com | 443-632-2089





# QUEENS CHAPEL TOWN CENTER

3100 HAMILTON ST, HYATTSVILLE, MD 20782, PRINCE GEORGE'S COUNTY

## FOR MORE INFORMATION, PLEASE CONTACT:

### ALEX SHEARER

ashearer@klnb.com

443-632-20581

### RYAN MINNEHAN

rminnehan@klnb.com

443-632-2088

### MASON BERNSTEIN

mbernstein@klnb.com

443-632-2089

100 West Road, Suite 505, Towson, MD 21204

.....

**klnb.com**



[instagram.com/klnbcre](https://www.instagram.com/klnbcre)



[linkedin.com/company/klnb](https://www.linkedin.com/company/klnb)



[facebook.com/KLNBCRE](https://www.facebook.com/KLNBCRE)

**CLICK TO VIEW PROPERTY WEBSITE**

While we have no reason to doubt the accuracy of any of the information supplied, we cannot, and do not, guarantee its accuracy. All information should be independently verified prior to a purchase or lease of the property. We are not responsible for errors, omissions, misuse, or misinterpretation of information contained herein and make no warranty of any kind, express or implied, with respect to the property or any other matters.