

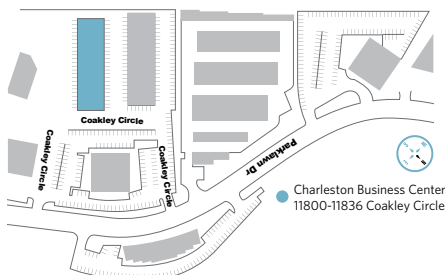


FOR LEASE

PROPERTY HIGHLIGHTS

Building Specifications

- Building Type: Industrial
- 11800-11836 Coakley Circle
 - Building Size: 42,258 SF
 - Year Built: 1973



Features

- Surface parking
- Public transportation is available through Montgomery County's "Ride On" program
- Abundance of amenities, food service options and retail centers within walking distance

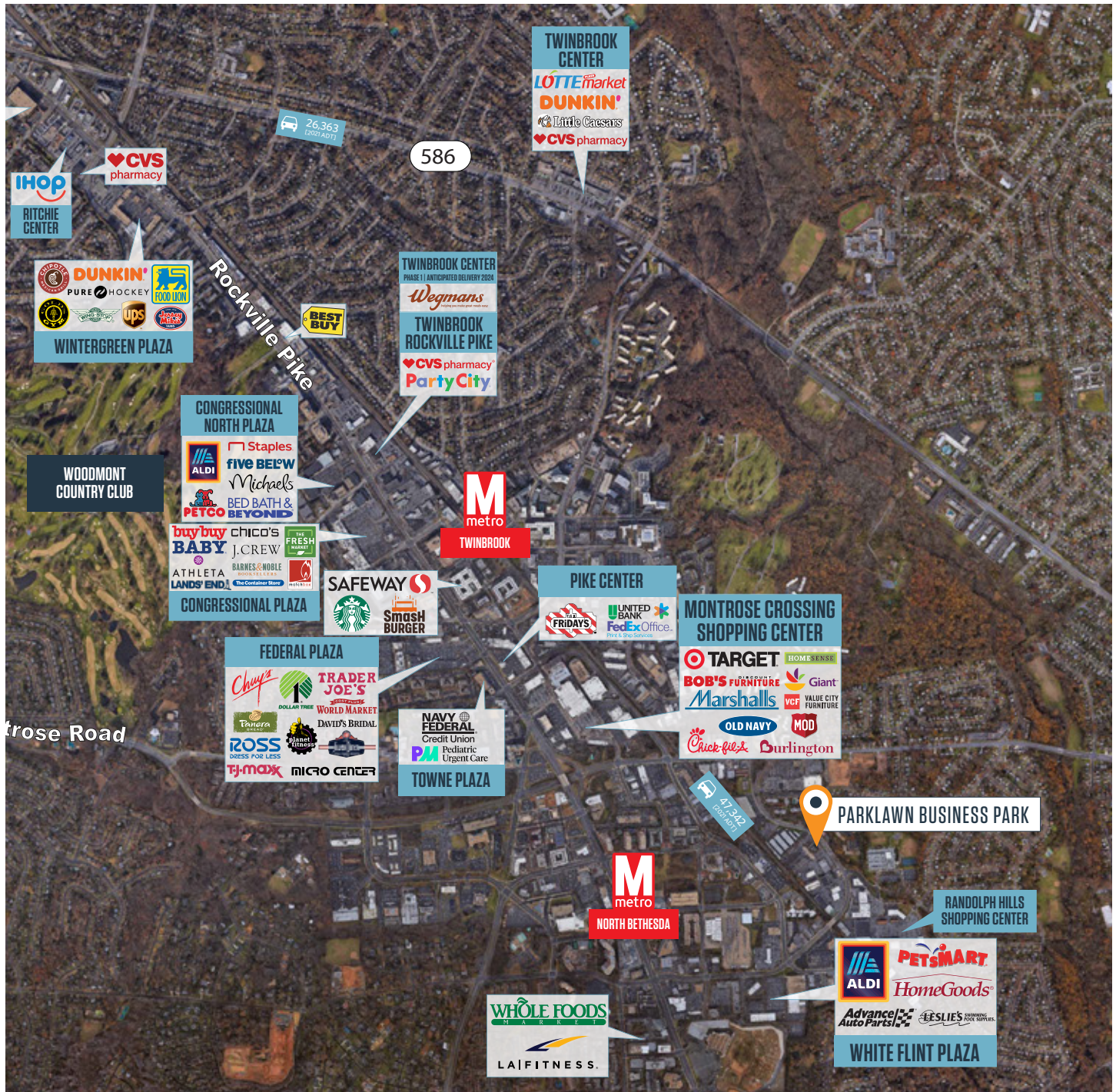
Location

- Quick access to I-270 and I-495
- Two WMATA Metro stops (Twinbrook & North Bethesda) are within 2 miles

CHARLESTON BUSINESS CENTER

11800-11882 Coakley Circle | Rockville, MD

MARKET AERIAL

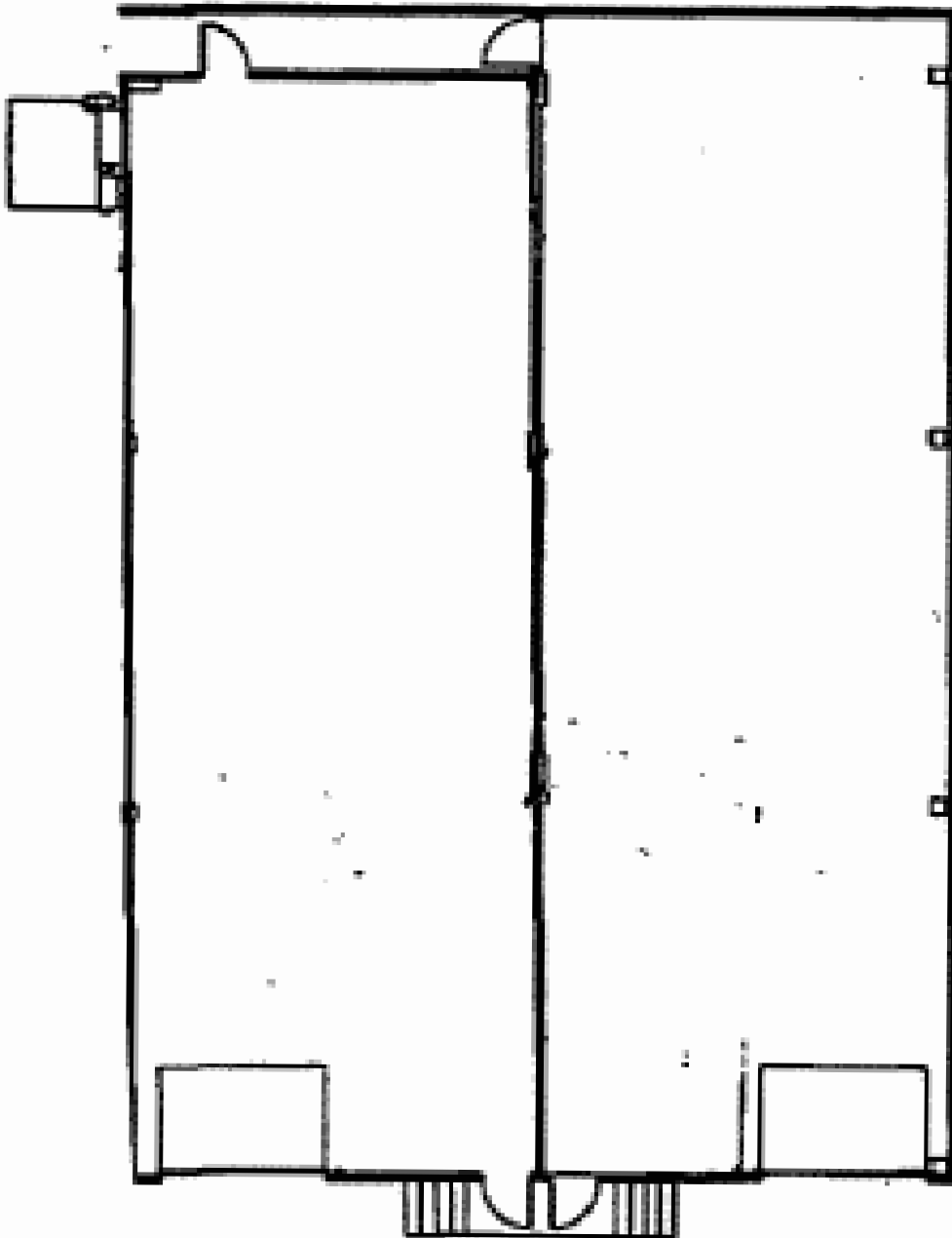


Kenneth Fellows
kfellows@klnb.com
301-222-0210

Robert Pugh
rpugh@klnb.com
301-222-0211

Keiry Martinez
kmartinez@klnb.com
703-334-5629

PHOTO



4,320 SF

AVAILABLE
10/01/2025

CHARLESTON BUSINESS CENTER

11800-11882 Coakley Circle | Rockville, MD

[CLICK TO VIEW PROPERTY WEBSITE](#)

For More Information, Please Contact:

Kenneth Fellows

kfellows@klnb.com

301-222-0210

Robert Pugh

rpugh@klnb.com

301-222-0211

Keiry Martinez

kmartinez@klnb.com

703-334-5629

12435 Park Potomac Ave, Suite 250,
Rockville, MD, 20854

klnb.com



[instagram.com/klnbcre](https://www.instagram.com/klnbcre)



[linkedin.com/company/klnb](https://www.linkedin.com/company/klnb)



[facebook.com/KLNBCRE](https://www.facebook.com/KLNBCRE)

While we have no reason to doubt the accuracy of any of the information supplied, we cannot, and do not, guarantee its accuracy. All information should be independently verified prior to a purchase or lease of the property. We are not responsible for errors, omissions, misuse, or misinterpretation of information contained herein and make no warranty of any kind, express or implied, with respect to the property or any other matters.

klnb