



OFFICE SPACE FOR LEASE

AVAILABLE SPACE

Suite 130: 2,536 SF

Suite 200: 4,464 SF

Suite 202-A: 1,596 SF

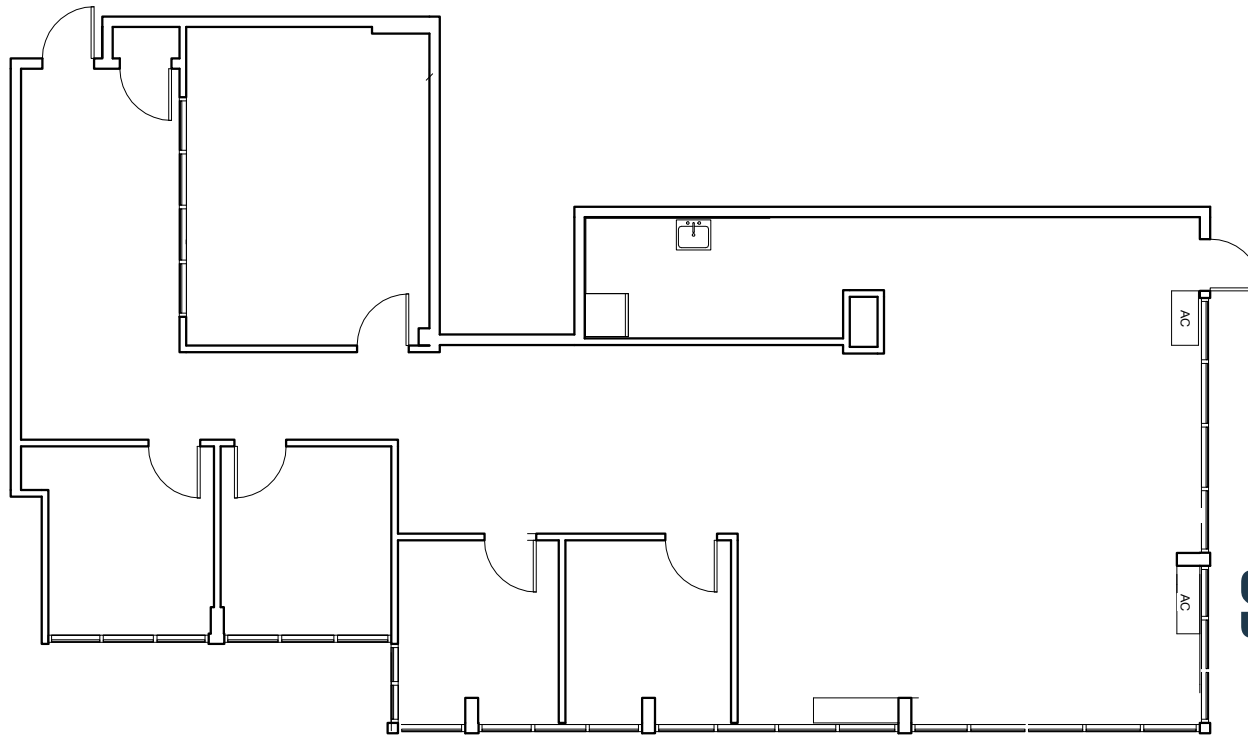
BUILDING FEATURES

- Lease Rate: \$18.95 FS
- 65,000 rentable square feet
- 4 stories
- 3.45 acres
- Zoned I-1
- 1 mile from NASA / Goddard Space Flight Center
- 3.5 parking spaces per 1,000 square feet
- Transportation to Greenbelt Metro & PG County bus service (TheBus)
- Easy access to Baltimore-Washington Parkway (MD Rt. 295) and Capital Beltway (I-495)
- On-site shared conference center

FLOOR PLAN

MARYLAND CORPORATE CENTER

7375 EXECUTIVE PLACE, LANHAM, MD 20706, PRINCE GEORGE'S COUNTY



SUITE 130
2,536 SF

KEN FELLOWS

kfellows@klnb.com | 301-222-0210

ROB PUGH

rpugh@klnb.com | 301-222-0211

KEIRY MARTINEZ

kmartinez@klnb.com | 703-334-5629

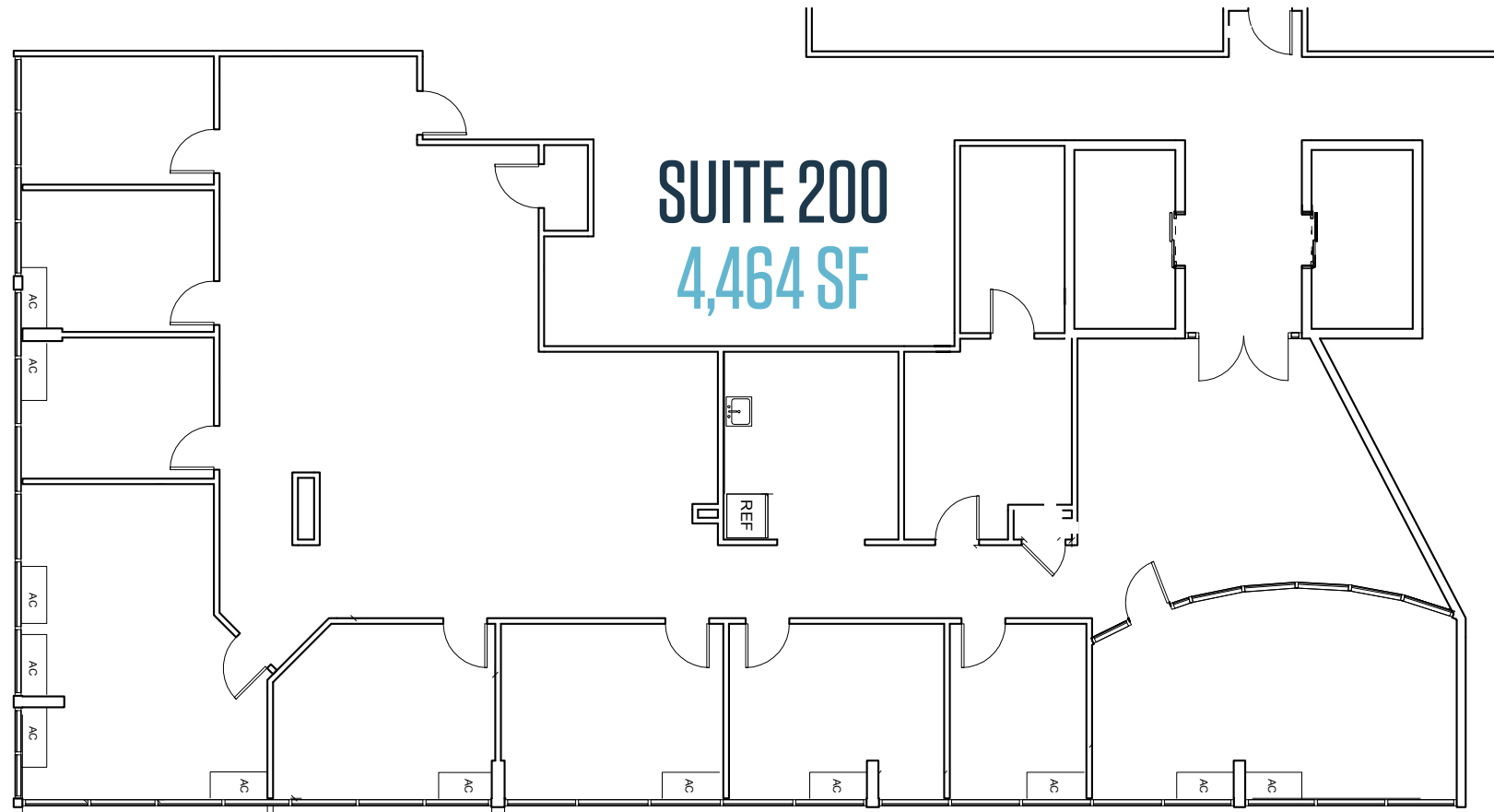


klnb.com

FLOOR PLAN

MARYLAND CORPORATE CENTER

7375 EXECUTIVE PLACE, LANHAM, MD 20706, PRINCE GEORGE'S COUNTY



KEN FELLOWS

kfellows@klnb.com | 301-222-0210

ROB PUGH

rpugh@klnb.com | 301-222-0211

KEIRY MARTINEZ

kmartinez@klnb.com | 703-334-5629



klnb.com

FLOOR PLAN

MARYLAND CORPORATE CENTER

7375 EXECUTIVE PLACE, LANHAM, MD 20706, PRINCE GEORGE'S COUNTY



KEN FELLOWS

kfellows@klnb.com | 301-222-0210

ROB PUGH

rpugh@klnb.com | 301-222-0211

KEIRY MARTINEZ

kmartinez@klnb.com | 703-334-5629



klnb.com



MARYLAND CORPORATE CENTER

7375 EXECUTIVE PLACE, LANHAM, MD 20706, PRINCE GEORGE'S COUNTY

FOR MORE INFORMATION, PLEASE CONTACT:

KEN FELLOWS

kfellows@klnb.com
301-222-0210

ROB PUGH

rpugh@klnb.com
301-222-0211

KEIRY MARTINEZ

kmartinez@klnb.com
703-334-5629

12435 Park Potomac Ave, Suite 250, Rockville 20854

.....

klnb.com



[instagram.com/klnbcre](https://www.instagram.com/klnbcre)



[linkedin.com/company/klnb](https://www.linkedin.com/company/klnb)



[facebook.com/KLNBCRE](https://www.facebook.com/KLNBCRE)

CLICK TO VIEW PROPERTY WEBSITE

While we have no reason to doubt the accuracy of any of the information supplied, we cannot, and do not, guarantee its accuracy. All information should be independently verified prior to a purchase or lease of the property. We are not responsible for errors, omissions, misuse, or misinterpretation of information contained herein and make no warranty of any kind, express or implied, with respect to the property or any other matters.