

NOW OPEN
SWEAT·DC



2,358 SF
AVAILABLE

RETAILERS NEARBY



JUST OPENED

RETAIL FOR LEASE

- 2,358 SF, street-level retail with signage and entrance along H St NE (23,904 ADT) available! Formerly occupied by Parker & Ace Veterinary Care.
- Mixed-use development in the heart of H St NE corridor located between Giant and Whole Foods at the intersection with 5th St NE.
- Average household income of over \$217,000+ within a 10-minute walk.

VICTOR SALCIDO

victor@klnb.com | 240-755-2704

JOE FLEISCHMANN

joef@klnb.com | 703-268-2708

MIKE PRATT

mpratt@klnb.com | 703-420-7765

SITE PLAN

501 H ST NE

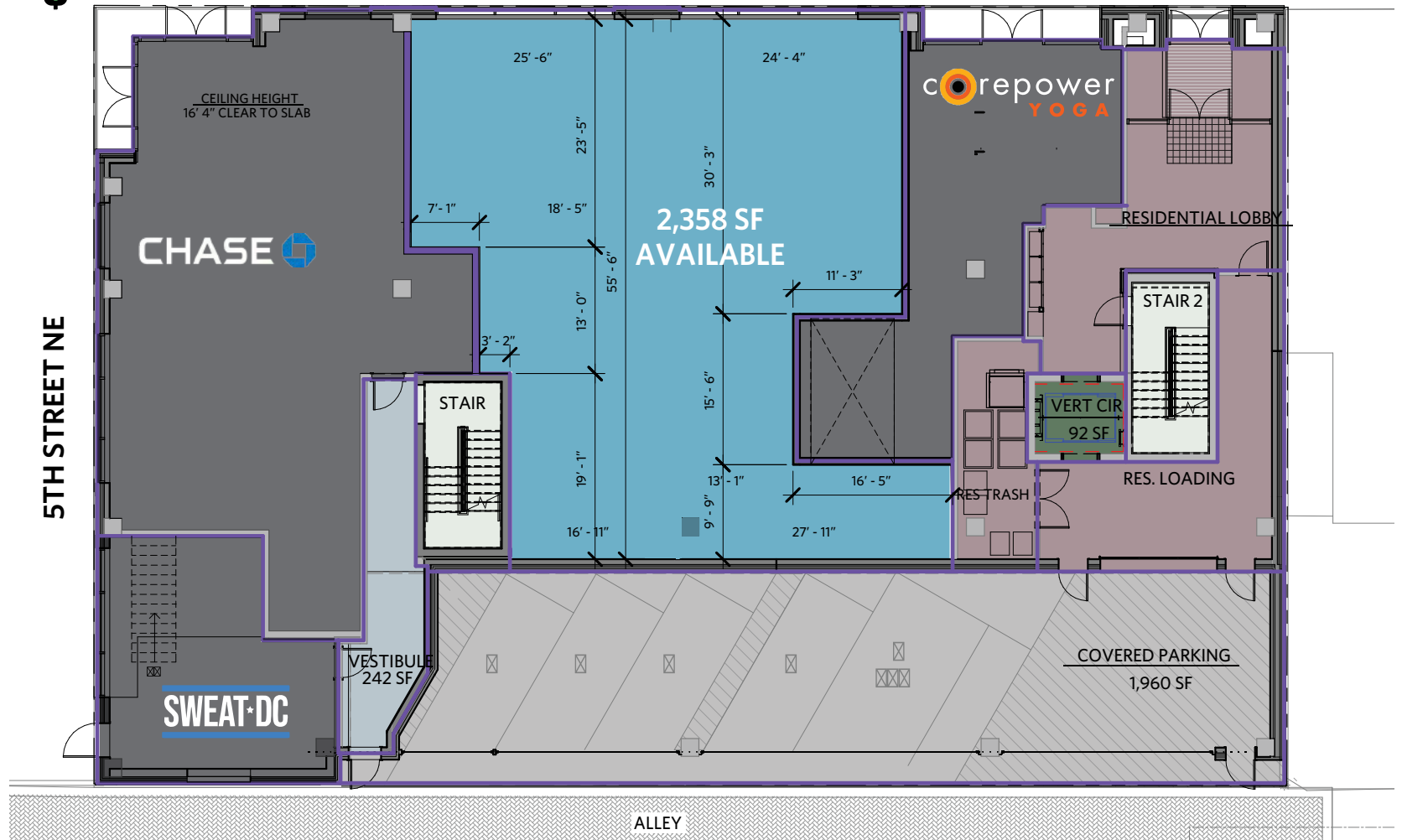
WASHINGTON, DC 20002

GROUND FLOOR PLAN

- LEASED
- AVAILABLE



H STREET NE - 23,904 ADT



VICTOR SALCIDO

victor@klnb.com | 240-755-2704

JOE FLEISCHMANN

joef@klnb.com | 703-268-2708

MIKE PRATT

mpratt@klnb.com | 703-420-7765



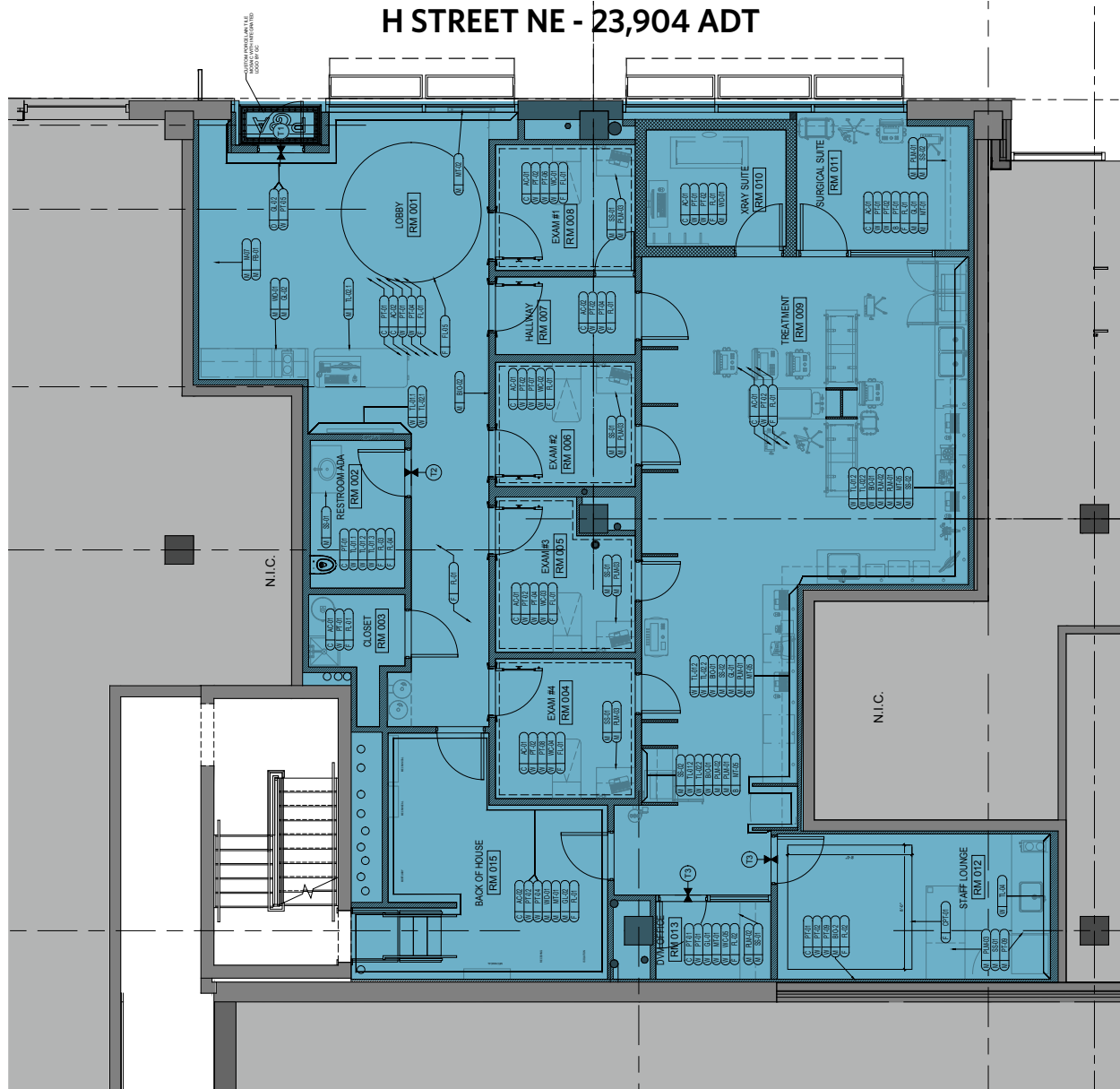
LOD/PLANS | 501 H ST NE

WASHINGTON, DC 20002

2,358 SF

[CLICK FOR PLANS](#)

H STREET NE - 23,904 ADT



VICTOR SALCIDO

victor@klnb.com | 240-755-2704

JOE FLEISCHMANN

joef@klnb.com | 703-268-2708

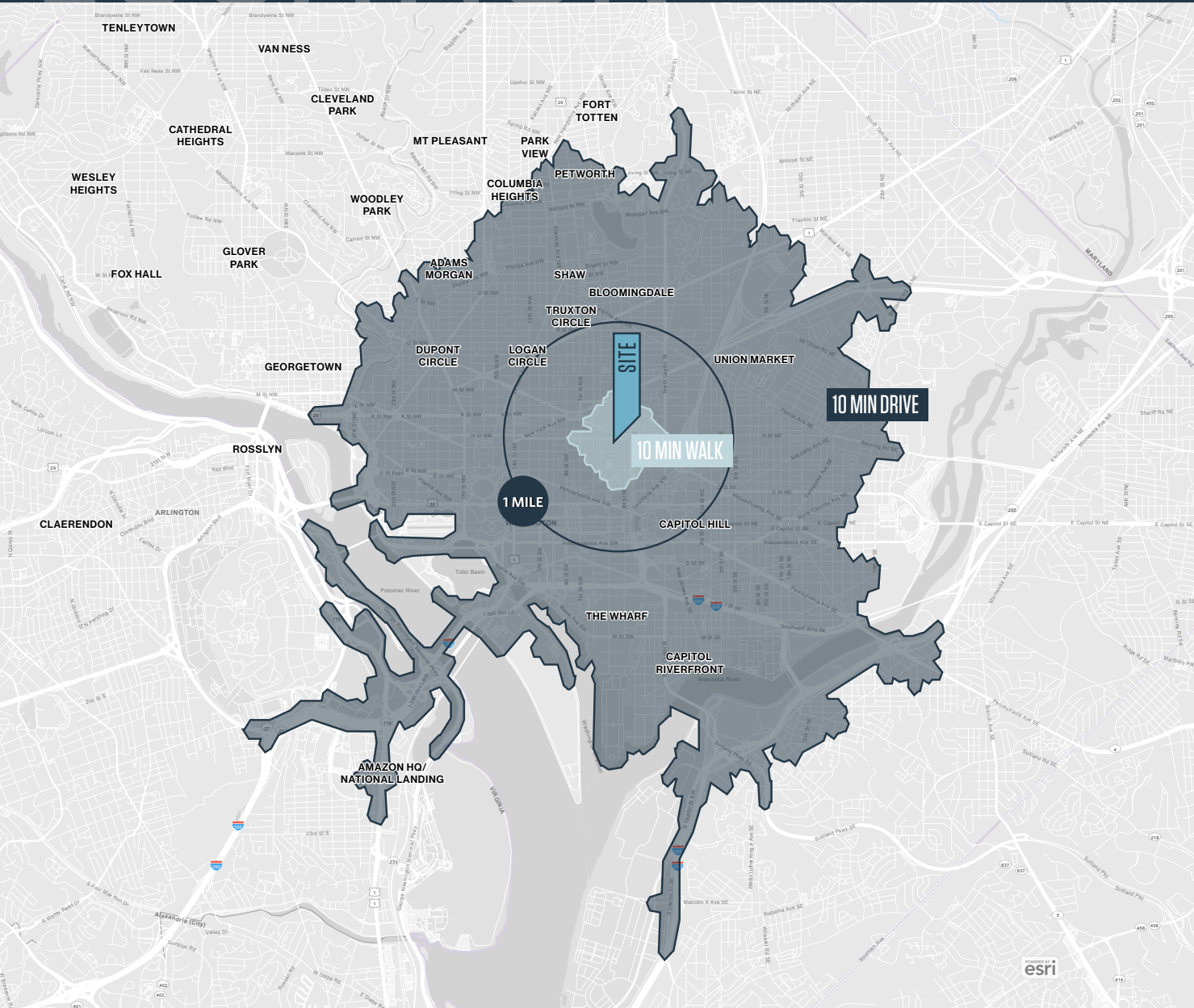
MIKE PRATT

mpratt@klnb.com | 703-420-7765



LOCATION

501 H ST NE WASHINGTON, DC 20002



DEMOGRAPHICS | 2025:

1-MILE	10-MIN WALK	10-MIN DRIVE
Population	17,637	154,525
Daytime Population	24,021	240,797
Households	8,770	80,630
Average HH Income	\$217,170	\$176,946

[CLICK TO DOWNLOAD DEMOGRAPHIC REPORT](#)

TRAFFIC COUNTS | 2023:

H Street NE 23,904 ADT

WALK SCORE: 95

VICTOR SALCIDO
victor@klnb.com | 240-755-2704

JOE FLEISCHMANN
joef@klnb.com | 703-268-2708

MIKE PRATT
mpratt@klnb.com | 703-420-7765



PHOTOS

501 H ST NE

WASHINGTON, DC 20002

[Click for Photos and Video Walkthrough](#)



Lobby



Exam Room



Treatment Room



Restroom

VICTOR SALCIDO

victor@klnb.com | 240-755-2704

JOE FLEISCHMANN

joef@klnb.com | 703-268-2708

MIKE PRATT

mpratt@klnb.com | 703-420-7765

klnb



501 H ST NE

WASHINGTON, DC 20002

FOR MORE INFORMATION, PLEASE CONTACT:

VICTOR SALCIDO

victor@klnb.com

240-755-2704

JOE FLEISCHMANN

joef@klnb.com

703-268-2708

MIKE PRATT

mpratt@klnb.com

703-420-7765

1130 Connecticut Avenue, Suite 600, Washington, DC 20036

.....
klnb.com



[instagram.com/klnbcre](https://www.instagram.com/klnbcre)



[linkedin.com/company/klnb](https://www.linkedin.com/company/klnb)



[facebook.com/KLNBCRE](https://www.facebook.com/KLNBCRE)

CLICK TO VIEW PROPERTY WEBSITE

While we have no reason to doubt the accuracy of any of the information supplied, we cannot, and do not, guarantee its accuracy. All information should be independently verified prior to a purchase or lease of the property. We are not responsible for errors, omissions, misuse, or misinterpretation of information contained herein and make no warranty of any kind, express or implied, with respect to the property or any other matters.