

# 1901 WISCONSIN AVENUE, NW

GLOVER PARK | WASHINGTON, DC 20007

IMMEDIATELY ADJACENT TO  
**WHITEHAVEN APARTMENTS - 256 UNITS!**  
DETAILS ON PAGE 5

**5,785 SF**  
IMMEDIATELY  
AVAILABLE

**YOUR  
SIGN  
HERE**

METERED STREET PARKING HERE

VICTOR SALCIDO | victor@klnb.com | 240.755.2704  
JOE FLEISCHMANN | joef@klnb.com | 703.268.2708  
MIKE PRATT | mpratt@klnb.com | 202.420.7765

**klnb**

# 1901 WISCONSIN AVENUE, NW

GLOVER PARK | WASHINGTON, DC 20007

THE DETAILS

PREMISES 5,785 SF

TIMING IMMEDIATE



NEARBY TENANTS

SAFEWAY

FRESH  
Baguette

STRETCHLAB

TRADER  
JOE'S

DEMOGRAPHICS  10 minute walk /  15 minute drive



2023  
POPULATION

4,084 / 325,097



MEDIAN  
HH INCOME

\$200,001 / \$135,422



AVERAGE  
HH INCOME

\$268,344 / \$194,965



CLICK TO VIEW DEMOS

klnb







# 1901 WISCONSIN AVENUE, NW

GLOVER PARK | WASHINGTON, DC 20007

THE NEIGHBORHOOD





# 1901 WISCONSIN AVENUE, NW

GLOVER PARK | WASHINGTON, DC 20007

NEARBY DEVELOPMENT



## 3300 WHITEHAVEN STREET NW

Combining 256 units, 5,600 SF of educational space for the British International School, and a forward-focused mass timber structure, Whitehaven sets the new standard for sustainable development in DC's multifamily market.

The project incorporates a variety of upscale amenities and ample outdoor recreation space for the active urbanite seeking room to roam.

[CLICK TO LEARN MORE](#)

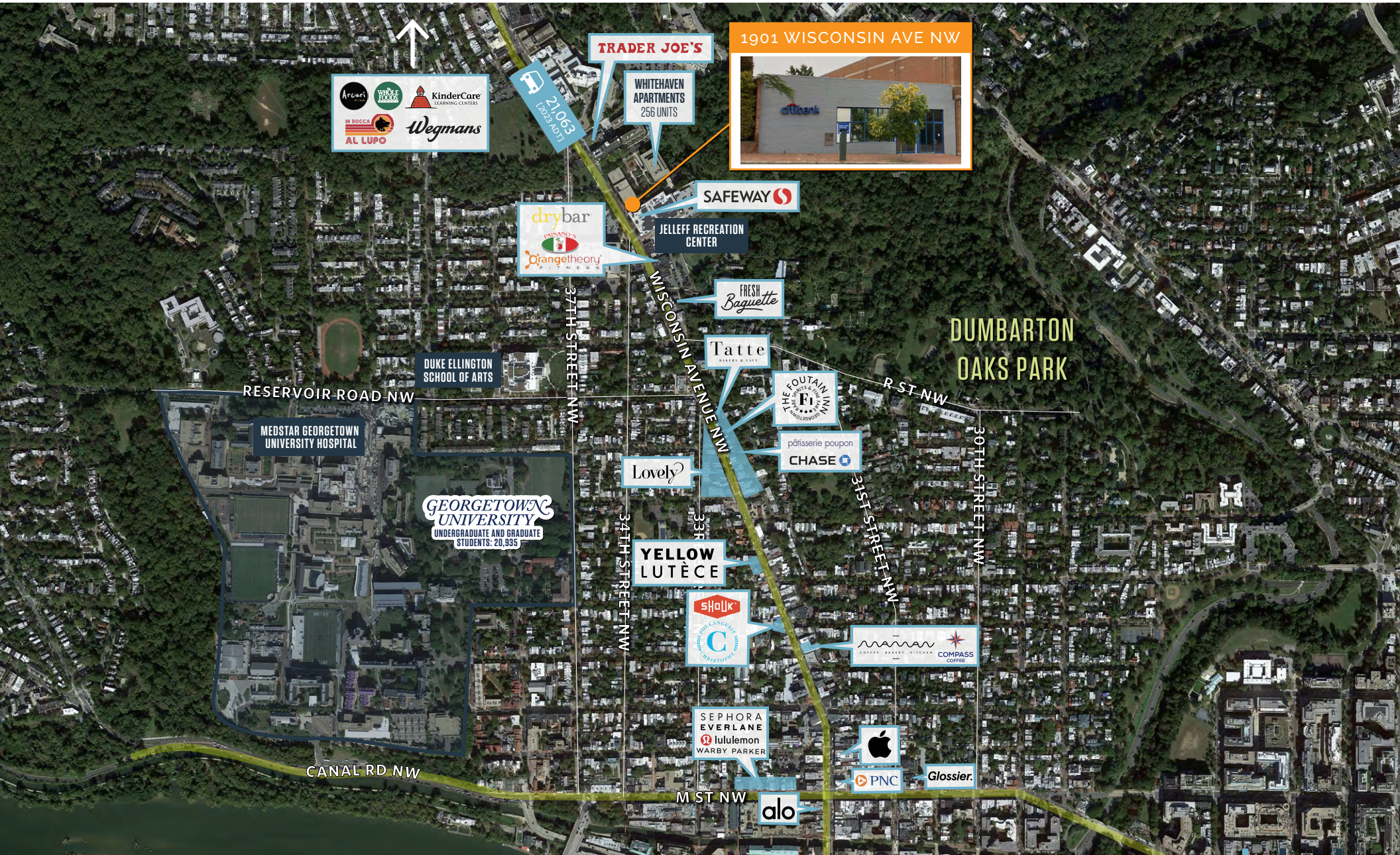




# 1901 WISCONSIN AVENUE, NW

GLOVER PARK | WASHINGTON, DC 20007

THE MARKET







# 1901 WISCONSIN AVENUE, NW

GLOVER PARK | WASHINGTON, DC 20007

VICTOR SALCIDO | [victor@klnb.com](mailto:victor@klnb.com) | 240.755.2704

JOE FLEISCHMANN | [joef@klnb.com](mailto:joef@klnb.com) | 703.268.2708

MIKE PRATT | [mpratt@klnb.com](mailto:mpratt@klnb.com) | 202.420.7765

klnb