

POTOMAC SHORES



TOWN CENTER

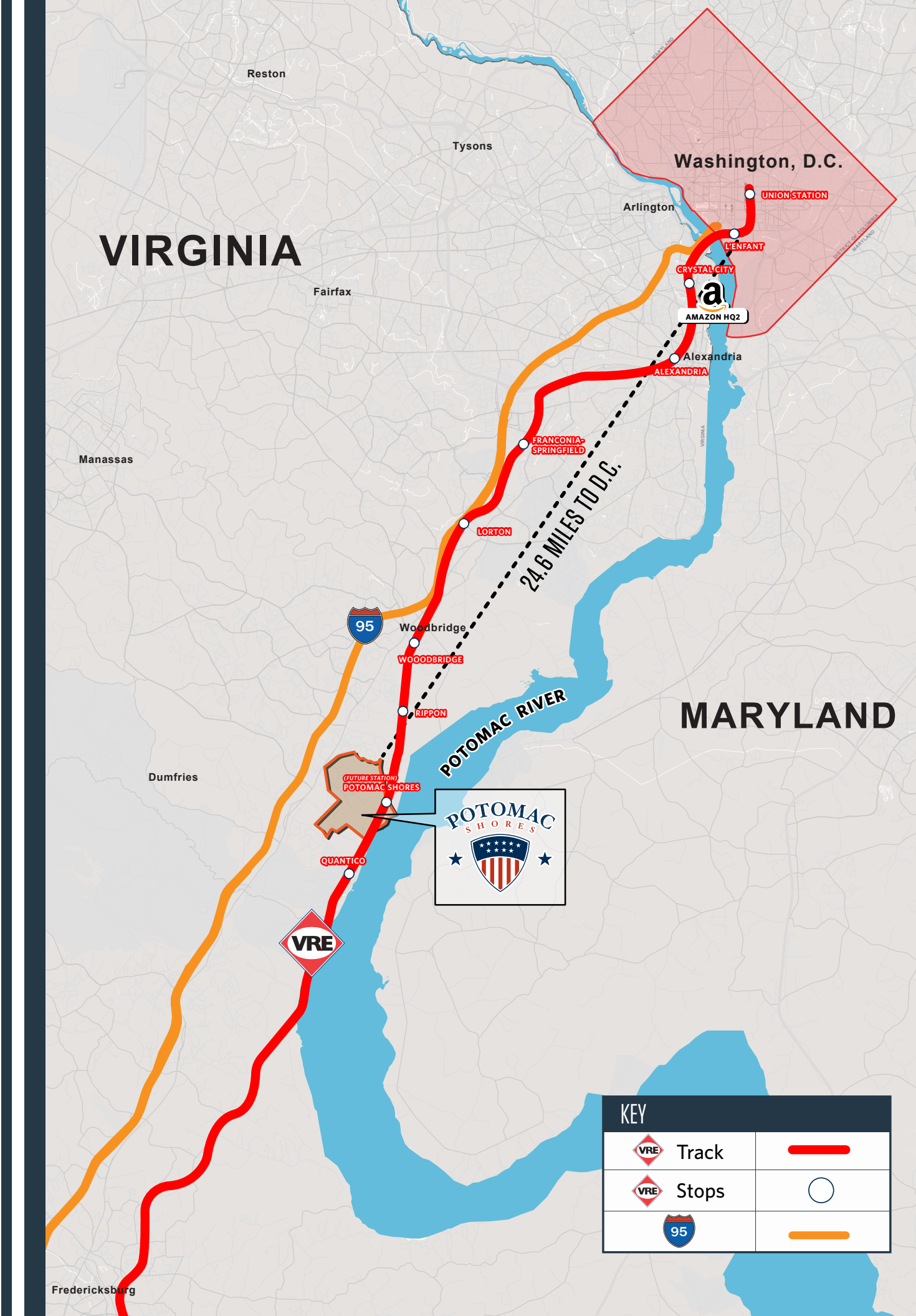
MIXED-USE DEVELOPMENT
RESTAURANT AND RETAIL OPPORTUNITIES
POTOMAC SHORES, VA 22026







POTOMAC SHORES is the perfect place to locate and grow your restaurant/retail business.

With close to 2,000 acres of rugged beauty, Potomac Shores is a mixed-use development located along the banks of the Potomac River. Situated just 24.6 miles south of Washington DC, this community will serve as a vibrant world-class destination with a far-reaching impact on Prince William County’s future.

Master Developer







Biddle Real Estate Ventures is a fully integrated real estate development company focused on mixed-use developments, with a particular specialty in navigating the land use regulatory process. The firm, and its affiliates, currently manages development projects in the Mid-Atlantic region and in the New York Tri-State Area. The BREV Senior Management Team has been crafting and executing the development strategy at Potomac Shores since 2011.



KEY		
	Track	
	Stops	
		

POTOMAC SHORES

Convenient access to I-95 and Route 1

	VRE - Potomac Shores Station	on-site
	Potomac Shores Golf Club	on-site
	Potomac River	1 mile
	Quantico Marine Corps Base	10.7 miles
	Potomac Mills Mall	8.2 miles
	IKEA	7.9 miles



RESTAURANT OPPORTUNITIES

- Phenomenal visibility within highly anticipated new development that already has over 2,300 occupied residential units.
- Flagship opportunity along I-95 corridor.
- Distinguished real estate unlike any other new community in Northern Virginia.
- Immediate customer base pulling from VRE commuter traffic (thousands of passengers per day with 500-800 passengers boarding and disembarking through Potomac Shores.)
- Innovate culinary and entertainment experiences in Prince William County.
- Built-in immediate long-term customer base within an exclusive community where nearly all residences are owned not rented.
- Incredible opportunity to establish your brand within a developer supported community.
- Al fresco dining opportunities with beautiful views of the Potomac River.
- Unique waterfront entertainment capability along the largest river in Virginia.
- Over 350 parking spaces dedicated to VRE commuters and restaurant patrons.



POTOMAC SHORES... *today*



Named the 2016 Community of the Year, this award-winning waterfront destination is located on the shores of the historic Potomac River. Capturing the pride of the American way of life and the charm of the Tidewater tradition, its walkable neighborhoods and emphasis on coastal outdoor living makes this community one of the best places to settle down. An assortment of amenities creates a destination for a lifetime, including an expansive rec and social center for Potomac Shores members only, a nature trail system, a Jack Nicklaus Signature Golf Course, K-12 schools, a planned town center, and VRE train stop.



RESIDENTIAL UNITS

Over 2,300 units completed and occupied with more than 1,700 additional units entitled.



POTOMAC SHORES GOLF CLUB

Top ranked Jack Nicklaus Signature Golf Course and clubhouse.



THE SHORES CLUB

A social and recreational center reserved for members and their guests. A family-friendly gathering places hosting a fitness center, pools and social club.



ALI KRIEGER SPORTS COMPLEX

Featuring 8 playing fields (including 2 artificial grass) 1 softball field, 1 baseball field, a concession stand with modern comforts and a children's play area.

POTOMAC SHORES... *tomorrow*



VRE TRAIN STATION

Will improve commutes to major employment centers for thousands of people per day to Alexandria and DC with 500-800 passengers boarding and disembarking through Potomac Shores.



TOWN CENTER

(Coming)

A bustling hub where residents of the area will enjoy fully walkable town center known as The Marketplace. A place to run errands, grab a bite to eat, and enjoy family entertainment and events.

DEMOGRAPHICS (2024)

1-MILE SEMI-CIRCLE	3-MILE SEMI-CIRCLE	5-MILE SEMI-CIRCLE
3,836	54,038	127,295
POPULATION		
2,311	35,426	97,456
DAYTIME POPULATION		
\$302,826	\$166,280	\$145,248
AVERAGE HH INCOME		

TRAFFIC (2023)

I-95	199,063 ADT
Route 1	41,098 ADT



41,098
AVERAGE DAILY TRAFFIC ON
ROUTE 1



199,063
AVERAGE DAILY TRAFFIC ON
I-95



127,295
POPULATION*

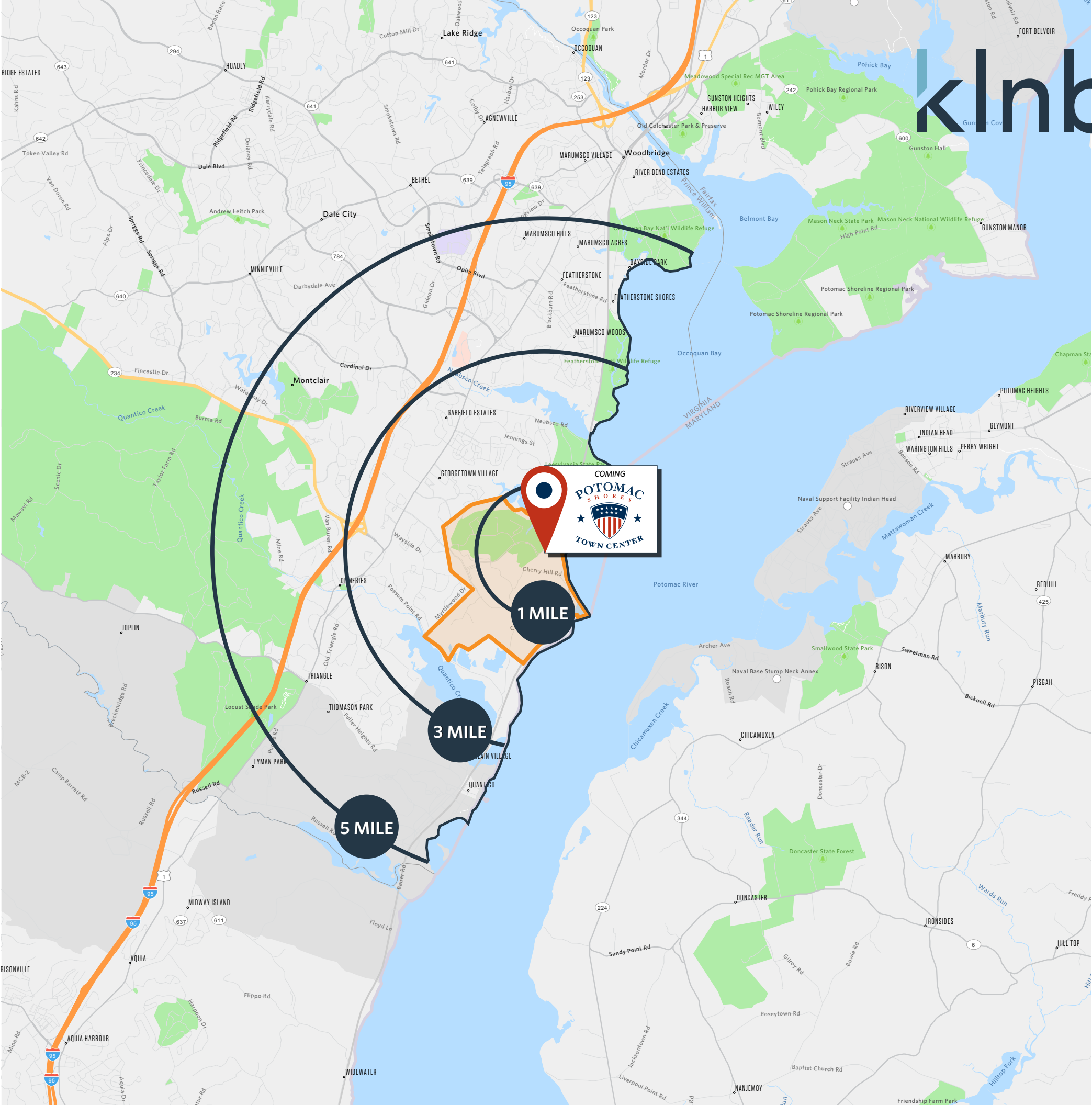


300,000 SF
RETAIL GLA



\$145,248
AVERAGE HOUSEHOLD INCOME*

*BASED ON 5-MILE RADIUS (2024)



klmb



CONCEPTUAL *site plan*



STATION HOUSE *access*



PHOTOS *station house*



**WARM/COLD DARK SHELL
DELIVERY FALL 2025**



*photo September 2025 with example signage

PHOTOS *station house*

klnb



*photo September 2025

PHOTOS *station house*

klnb



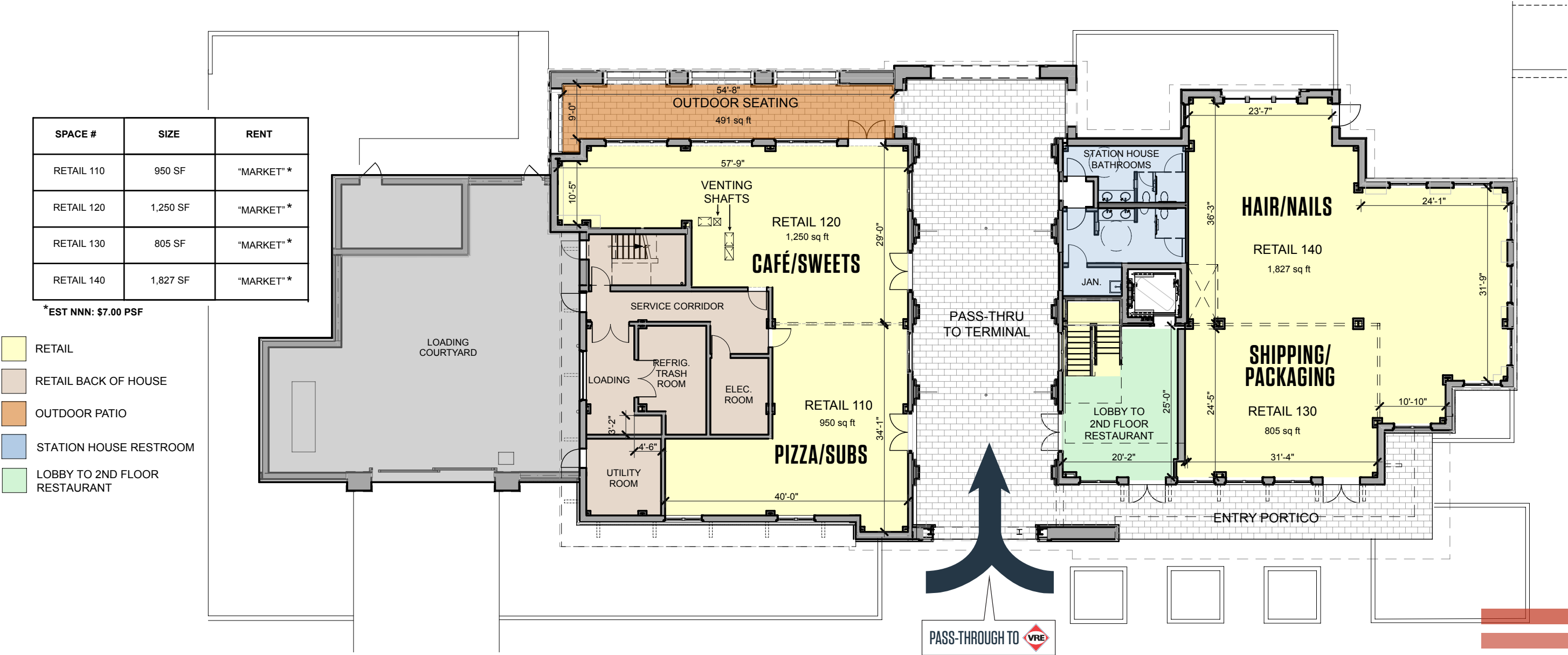
*photo September 2025

FLOOR PLAN *station house*

klnb

FIRST FLOOR

Potomac River Side



Potomac Shores Community Side

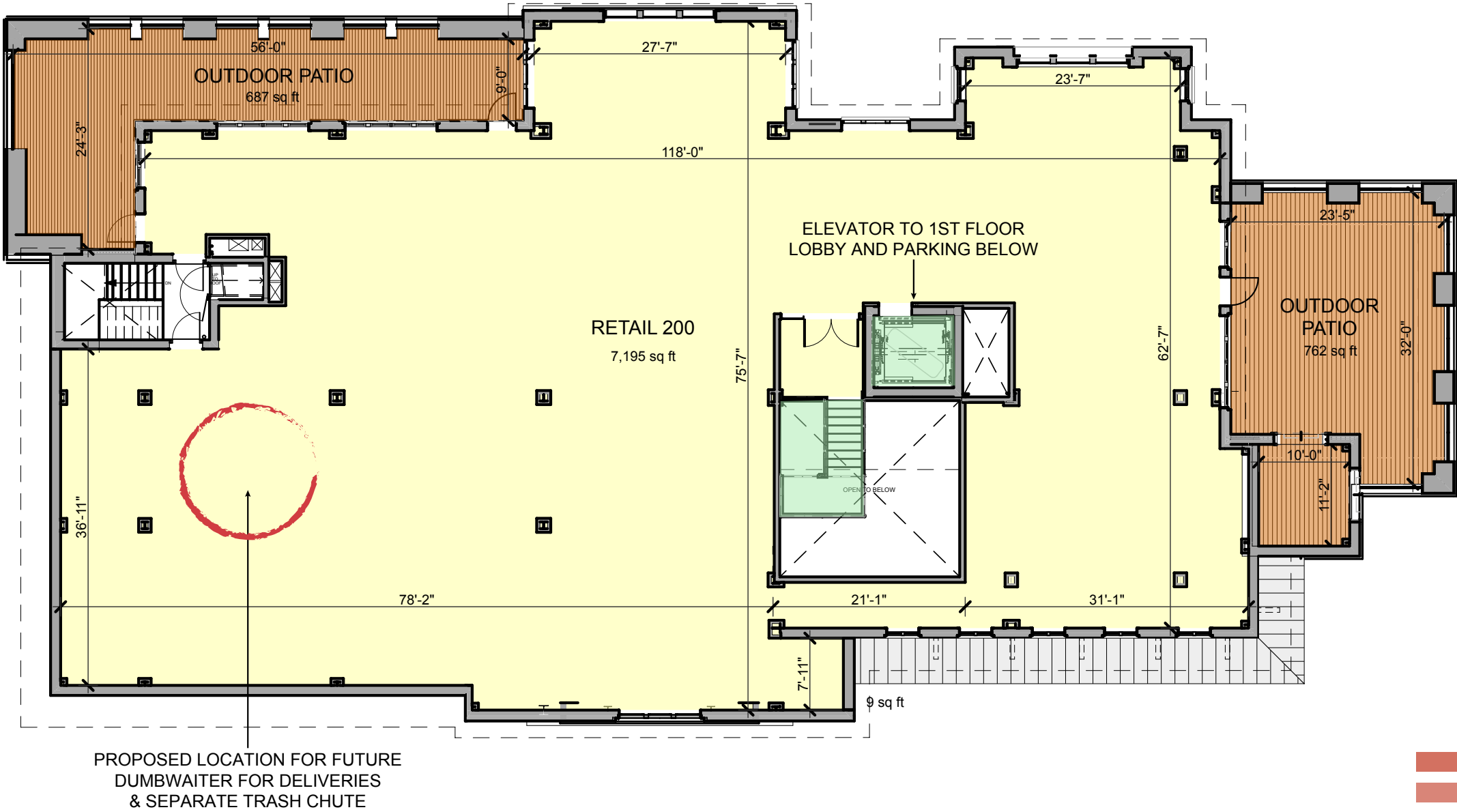
SECOND FLOOR

Potomac River Side

SPACE #	SIZE	RENT
RETAIL 200	7,195 SF	"MARKET" *

*EST NNN: \$7.00 PSF

- RETAIL
- RETAIL BACK OF HOUSE
- OUTDOOR PATIO
- ACCESS TO 1ST FLOOR RESTAURANT LOBBY

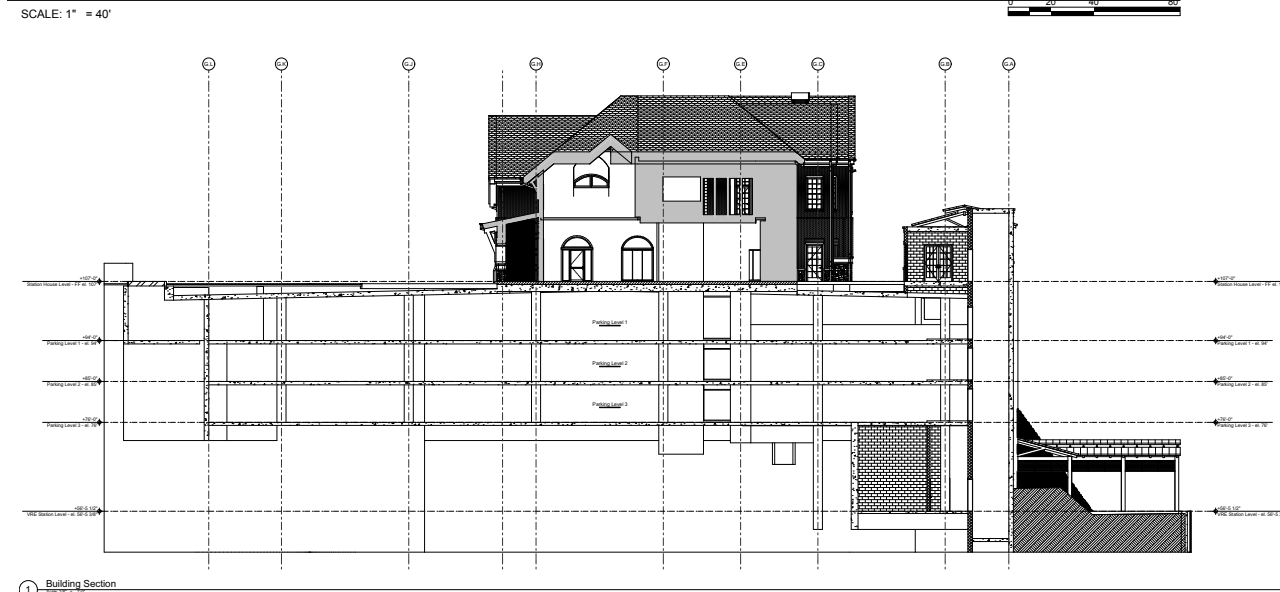


Potomac Shores Community Side

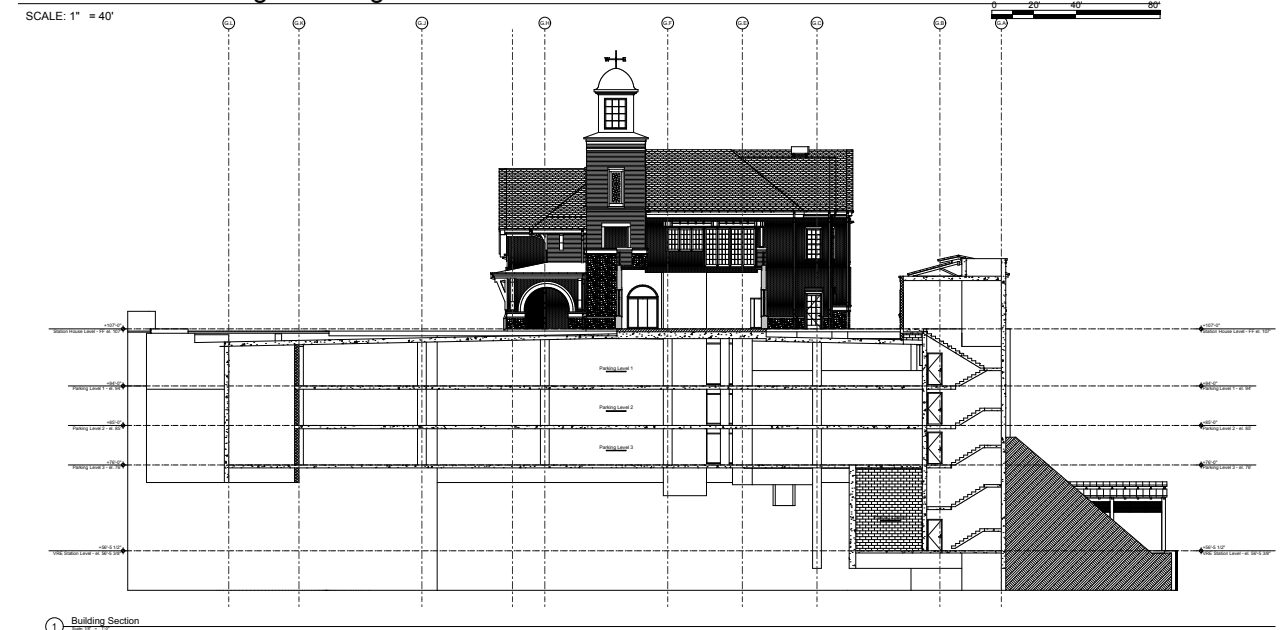
STATION HOUSE *parking*

3 subterranean parking decks with over 350 parking spaces.

EW Section - through building arcade

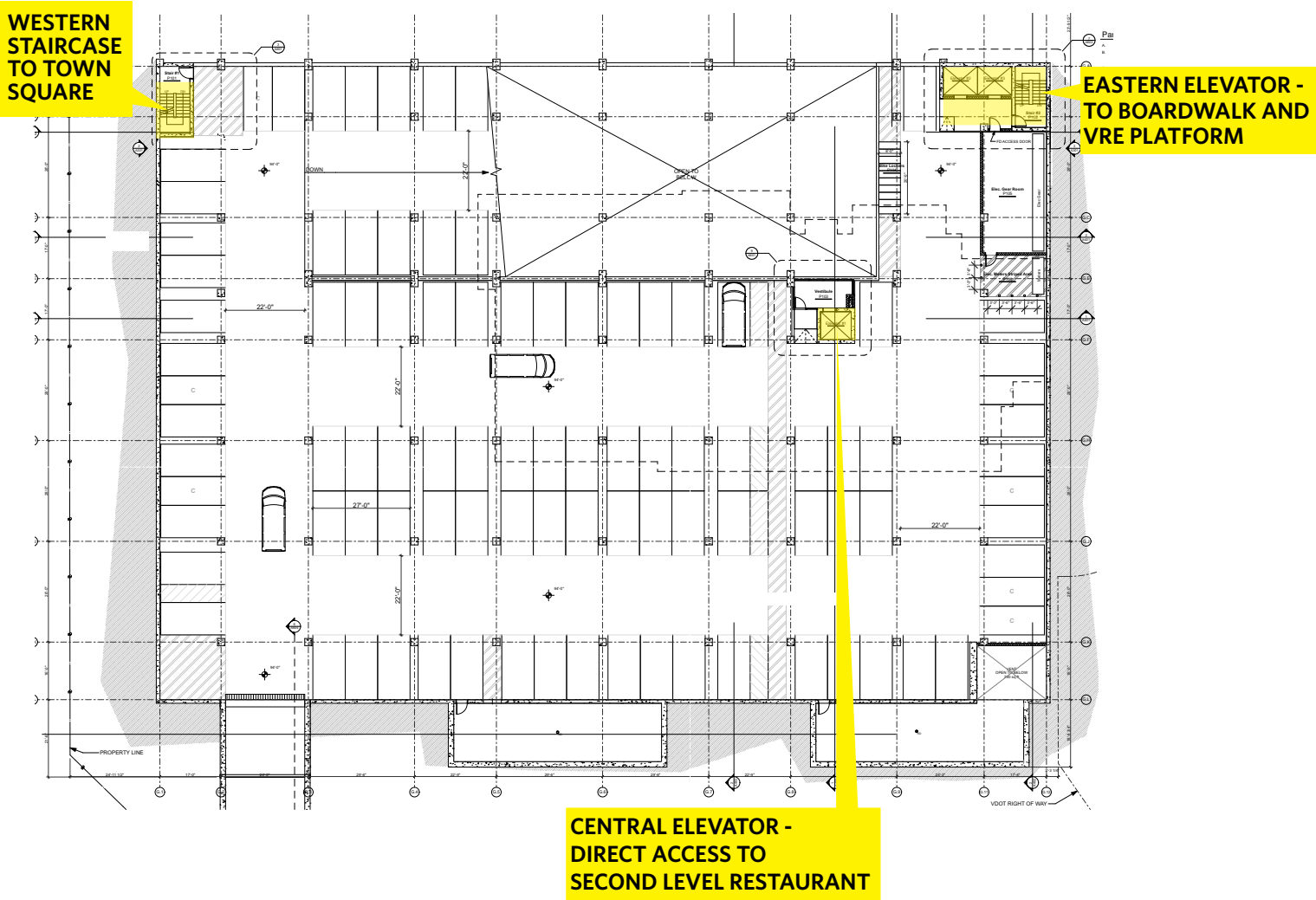


EW Section - through building exterior staircase

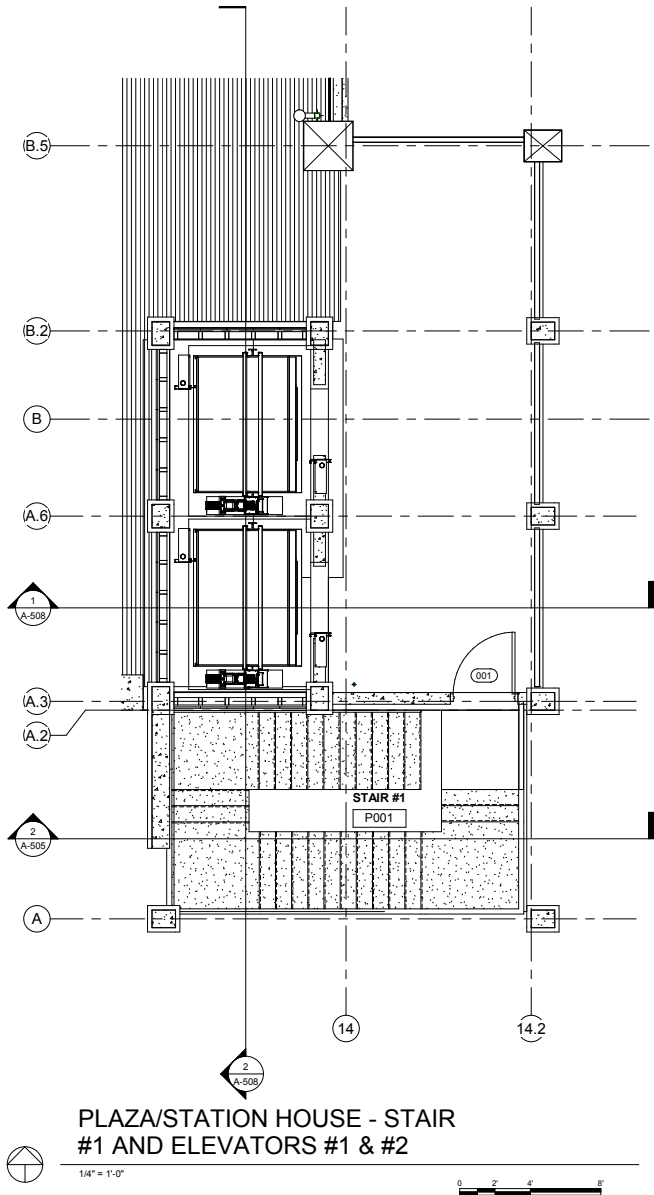


GARAGE *parking*

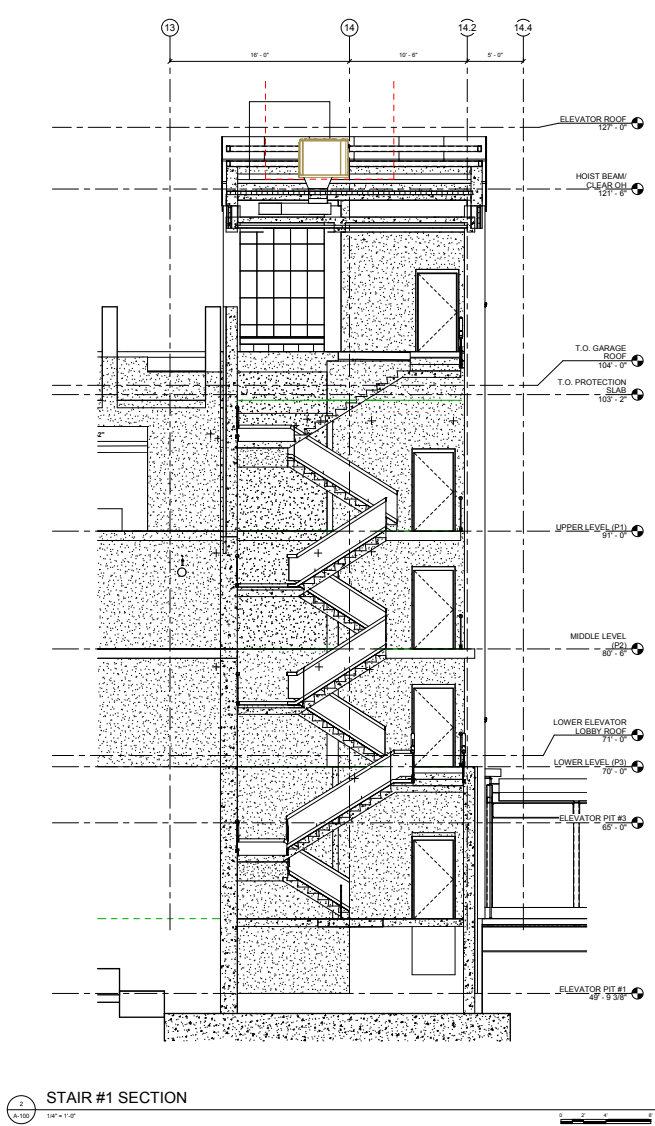
FIRST LEVEL PARKING DECK



ELEVATOR



STAIRS



CONCEPTUAL VISION *waterfront entertainment*

klnb



POTOMAC
SHORES



TOWN CENTER

klnb

CONTACT

DALLON L. CHENEY
dcheney@klnb.com
703-268-2703

ALEX WILLNER
awillner@klnb.com
703-268-2718

8065 Leesburg Pike, Suite 700
Tysons, VA 22182

klnb.com



CLICK TO VIEW PROPERTY WEBSITE

potomacshores.com