

FORMER GREENE TURTLE

830 Market St, Westminster, MD 21157
Carroll County

8,576 SF 2ND GEN RESTAURANT



NEARBY RETAILERS

weis
KOHL'S

Wawa

target

THE HOME DEPOT

BJ's

LOWE'S

RETAIL FOR LEASE

- Available: 8,576 SF 2nd Gen Restaurant
- Site sits on 1.7 AC parcel with prominent frontage along Market Street and within close proximity to Route 140 and Route 97.
- High daytime population with built-in traffic drivers such as Carroll Hospital, new residential and commercial projects.
- 98 Designated Parking Spaces

LEASED BY:

klnb

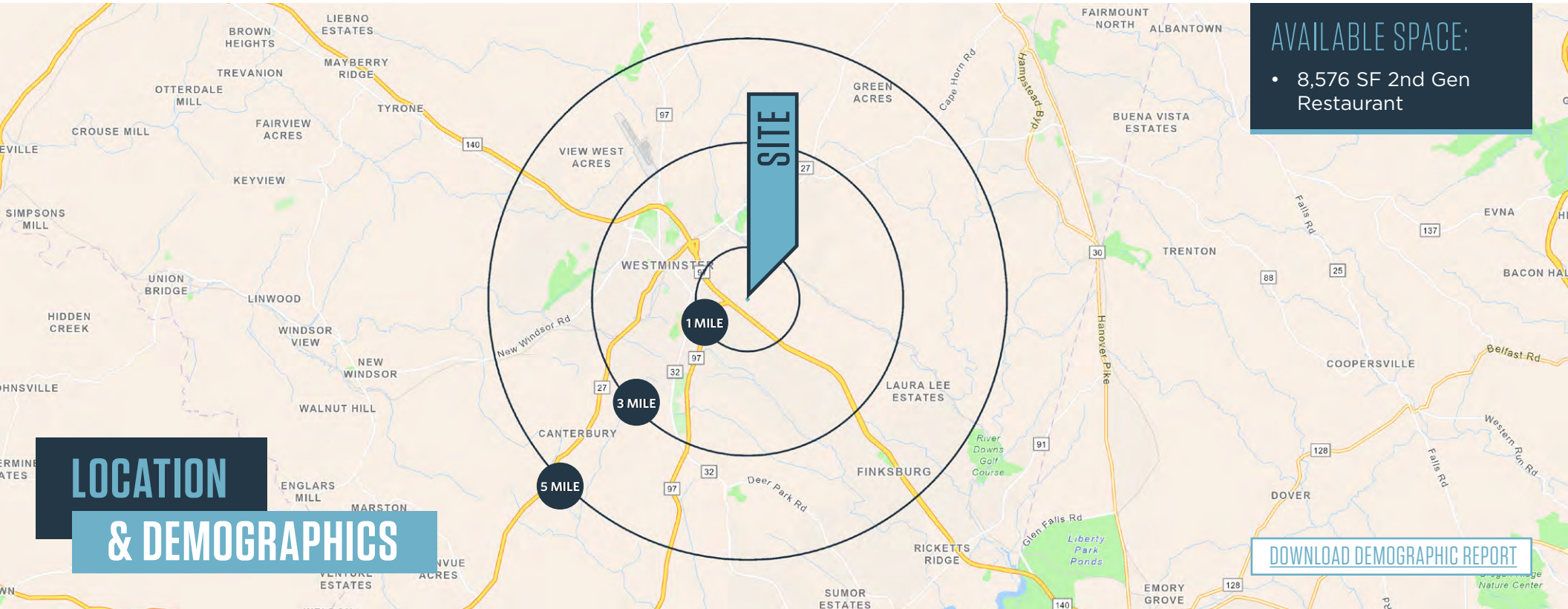
Alex Shearer
ashearer@klnb.com
443-632-2081

Ryan Minnehan
rminnehan@klnb.com
443-632-2088

100 West Road, Suite 505, Towson, MD 21204
klnb.com

FORMER GREENE TURTLE

830 Market St, Westminster, MD 21157
Carroll County



AVAILABLE SPACE:

- 8,576 SF 2nd Gen Restaurant

LOCATION & DEMOGRAPHICS

[DOWNLOAD DEMOGRAPHIC REPORT](#)

TRAFFIC COUNTS | 2023

Baltimore Blvd [MD-140]	42,025 ADT
Malcolm [MD-97]	27,342 ADT

	1-MILE	3-MILES	5-MILES			
	Population 2,825	30,113	50,479		Households 1,109	11,268 18,985
	Daytime Population 6,035	37,377	52,795		Average Household Income \$108,398	\$119,468 \$129,053

Alex Shearer
ashearer@klnb.com
443-632-2081

Ryan Minnehan
rminnehan@klnb.com
443-632-2088

100 West Road, Suite 505
Towson, MD 21204
klnb.com



FORMER GREENE TURTLE

830 Market St, Westminster, MD 21157
Carroll County

MARKET AERIAL



Alex Shearer
ashearer@klnb.com
443-632-2081

Ryan Minnehan
rminnehan@klnb.com
443-632-2088

100 West Road, Suite 505
Towson, MD 21204
klnb.com



FORMER GREENE TURTLE

830 Market St, Westminster, MD 21157
Carroll County

CLOSE-UP AERIAL



Alex Shearer
ashearer@klnb.com
443-632-2081

Ryan Minnehan
rminnehan@klnb.com
443-632-2088

100 West Road, Suite 505
Towson, MD 21204
klnb.com



FORMER GREENE TURTLE

830 Market St, Westminster, MD 21157
Carroll County

BIRD'S EYE AERIAL



KOHL'S


the Greene Turtle.

THE HOME DEPOT

BJ's

98 DESIGNATED
PARKING SPACES

Alex Shearer
ashearer@klnb.com
443-632-2081

Ryan Minnehan
rminnehan@klnb.com
443-632-2088



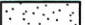

100 West Road, Suite 505
Towson, MD 21204
klnb.com

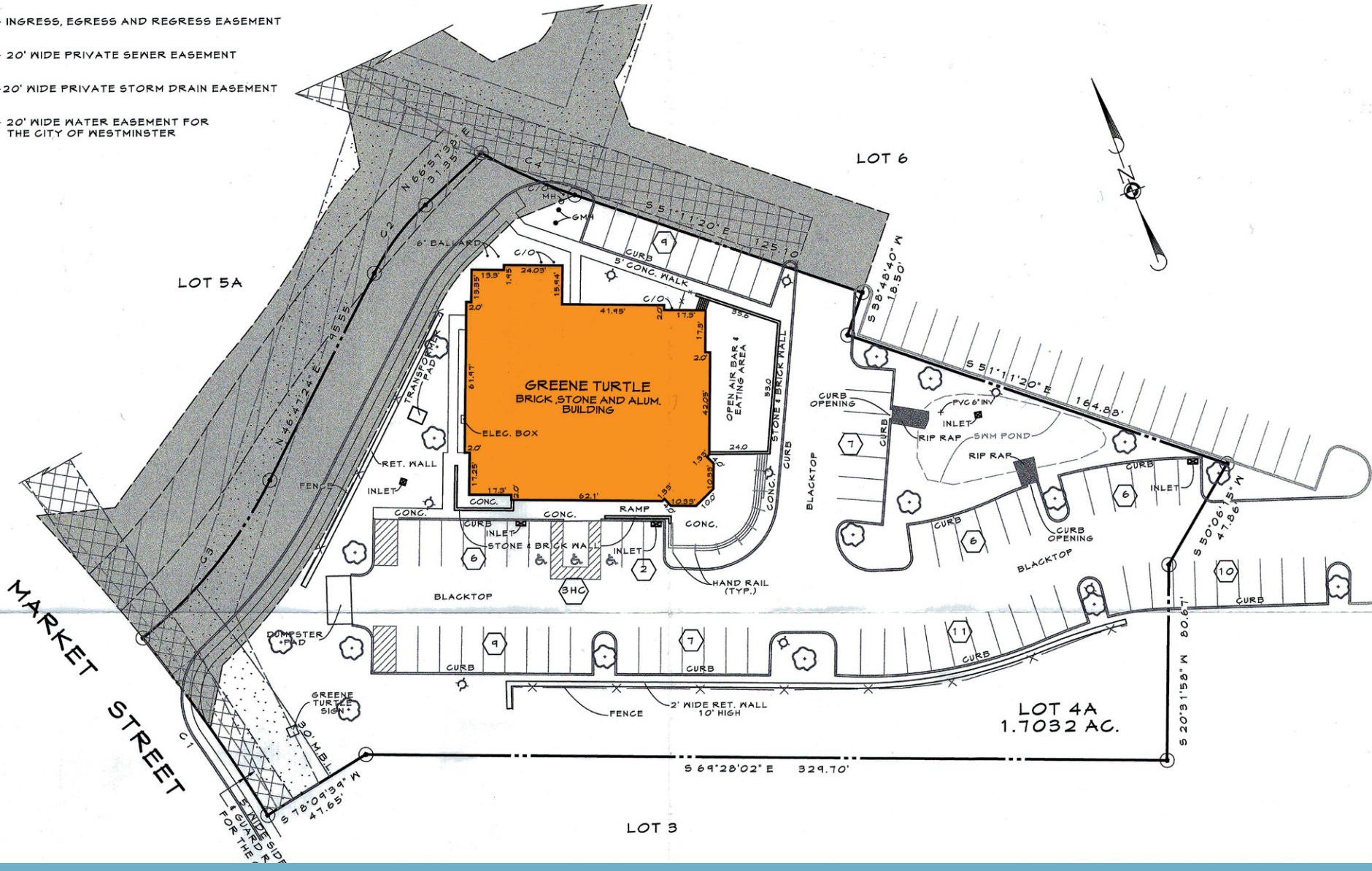


FORMER GREENE TURTLE

830 Market St, Westminster, MD 21157
Carroll County

SITE PLAN

-  - INGRESS, EGRESS AND REGRESS EASEMENT
-  - 20' WIDE PRIVATE SEWER EASEMENT
-  - 20' WIDE PRIVATE STORM DRAIN EASEMENT
-  - 20' WIDE WATER EASEMENT FOR THE CITY OF WESTMINSTER



FORMER GREENE TURTLE

830 Market St, Westminster, MD 21157
Carroll County

PHOTOS



Alex Shearer
ashearer@klnb.com
443-632-2081

Ryan Minnehan
rminnehan@klnb.com
443-632-2088

100 West Road, Suite 505
Towson, MD 21204
klnb.com

klnb

FORMER GREENE TURTLE

830 Market St, Westminster, MD 21157

Carroll County

[CLICK TO VIEW PROPERTY WEBSITE](#)

For More Information, Please Contact:

Alex Shearer
ashearer@klnb.com
443-632-2081

Ryan Minnehan
rminnehan@klnb.com
443-632-2088



While we have no reason to doubt the accuracy of any of the information supplied, we cannot, and do not, guarantee its accuracy. All information should be independently verified prior to a purchase or lease of the property. We are not responsible for errors, omissions, misuse, or misinterpretation of information contained herein and make no warranty of any kind, express or implied, with respect to the property or any other matters.

100 West Road, Suite 505
Towson, MD 21204
klnb.com

