

HOLLYWOOD SHOPPING CENTER

9805 Rhode Island Avenue, College Park, MD 20740
Prince George's County



RETAIL FOR LEASE

JOIN THESE RETAILERS:



Concentra®

- 49,193 SF shopping center well located on the heavily trafficked Rhode Island Avenue in College Park, MD.
- Excellent visibility and abundant parking.
- Located within 2 miles of the University of Maryland, College Park (40,800+ students).

SIZE	CONDITION	TIMING
500 SF	"AS-IS" (EXISTING BARBER)	WITHIN 60 DAYS OF SIGNED LEASE
1,000 SF	"AS-IS" (FORMER HOLLYWOOD NUTRITION)	IMMEDIATE
1,200 SF	"AS-IS" (FORMER MARTIAL ARTS STUDIO)	IMMEDIATE
*Est. NNN: \$7.60 PSF		

OWNED BY:  CARROLLTON
ENTERPRISES

Mai Vo
mvo@klnb.com
703-268-2722

Matt Copeland
mcopeland@klnb.com
443-632-2051

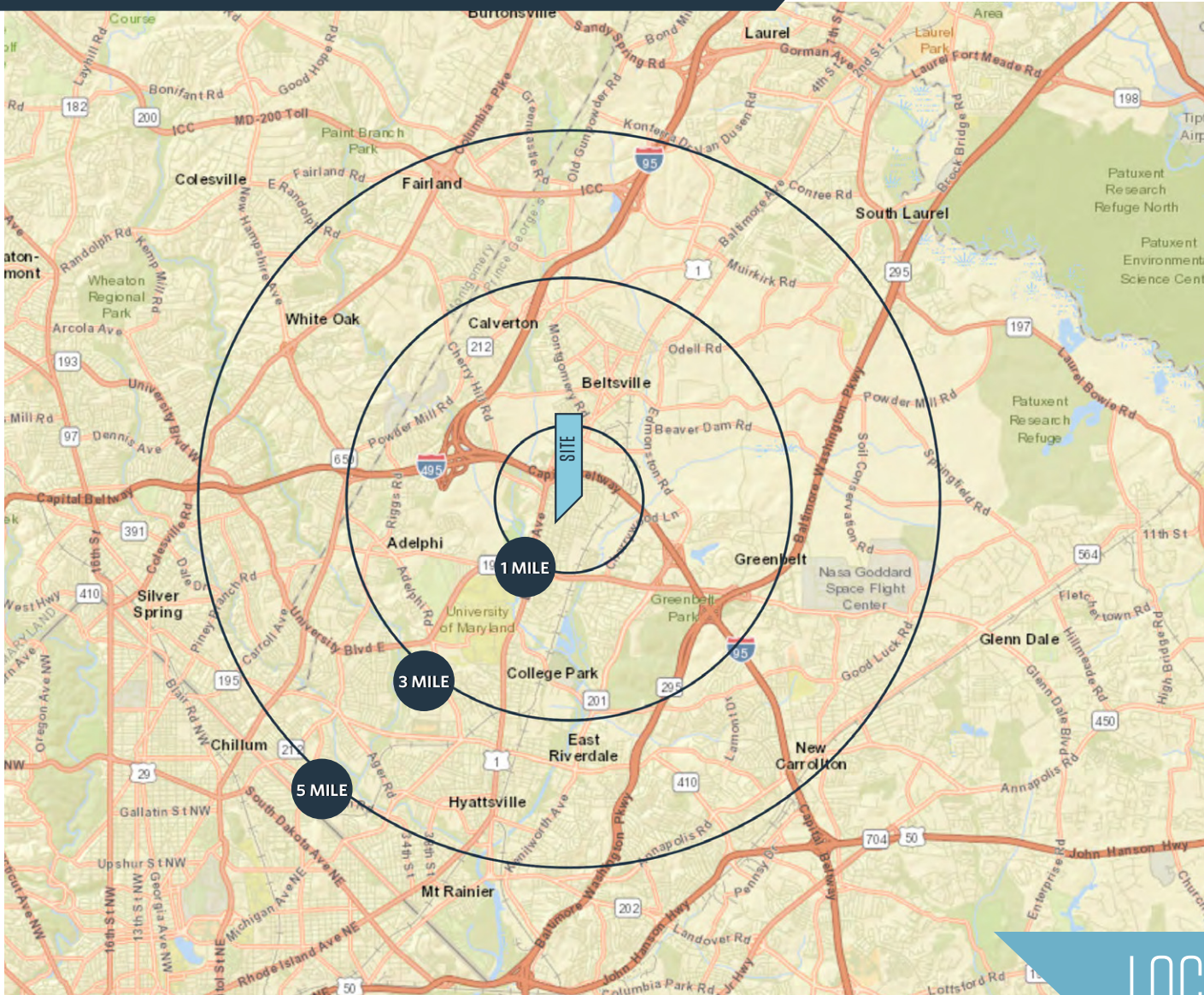
Michael Ginsburg
mginsburg@klnb.com
443-632-2041

100 West Rd, Suite 505
Baltimore, MD 21204
klnb.com

klnb

HOLLYWOOD SHOPPING CENTER

9805 Rhode Island Avenue, College Park, MD 20740
Prince George's County



DEMOGRAPHICS | 2025:

1-MILE	3-MILE	5-MILE
Population		
11,941	99,737	373,367
Daytime Population		
14,638	125,867	357,170
Households		
4,580	34,175	122,871
Average HH Income		
\$128,155	\$109,879	\$117,042

[CLICK TO DOWNLOAD DEMOGRAPHIC REPORT](#)

TRAFFIC COUNTS | 2024:

Rhode Island Avenue	15,050ADT
Capital Beltway	177,781 ADT

LOCATION & DEMOGRAPHICS

Mai Vo
mvo@klnb.com
703-268-2722

Matt Copeland
mcopeland@klnb.com
443-632-2051

Michael Ginsburg
mginsburg@klnb.com
443-632-2041

100 West Rd, Suite 505
Baltimore, MD 21204
klnb.com



HOLLYWOOD SHOPPING CENTER

9805 Rhode Island Avenue, College Park, MD 20740
Prince George's County



MARKET AERIAL

Mai Vo
mvo@klnb.com
703-268-2722

Matt Copeland
mcopeland@klnb.com
443-632-2051

Michael Ginsburg
mginsburg@klnb.com
443-632-2041



100 West Rd, Suite 505
Baltimore, MD 21204
klnb.com

klnb

HOLLYWOOD SHOPPING CENTER

9805 Rhode Island Avenue, College Park, MD 20740
Prince George's County

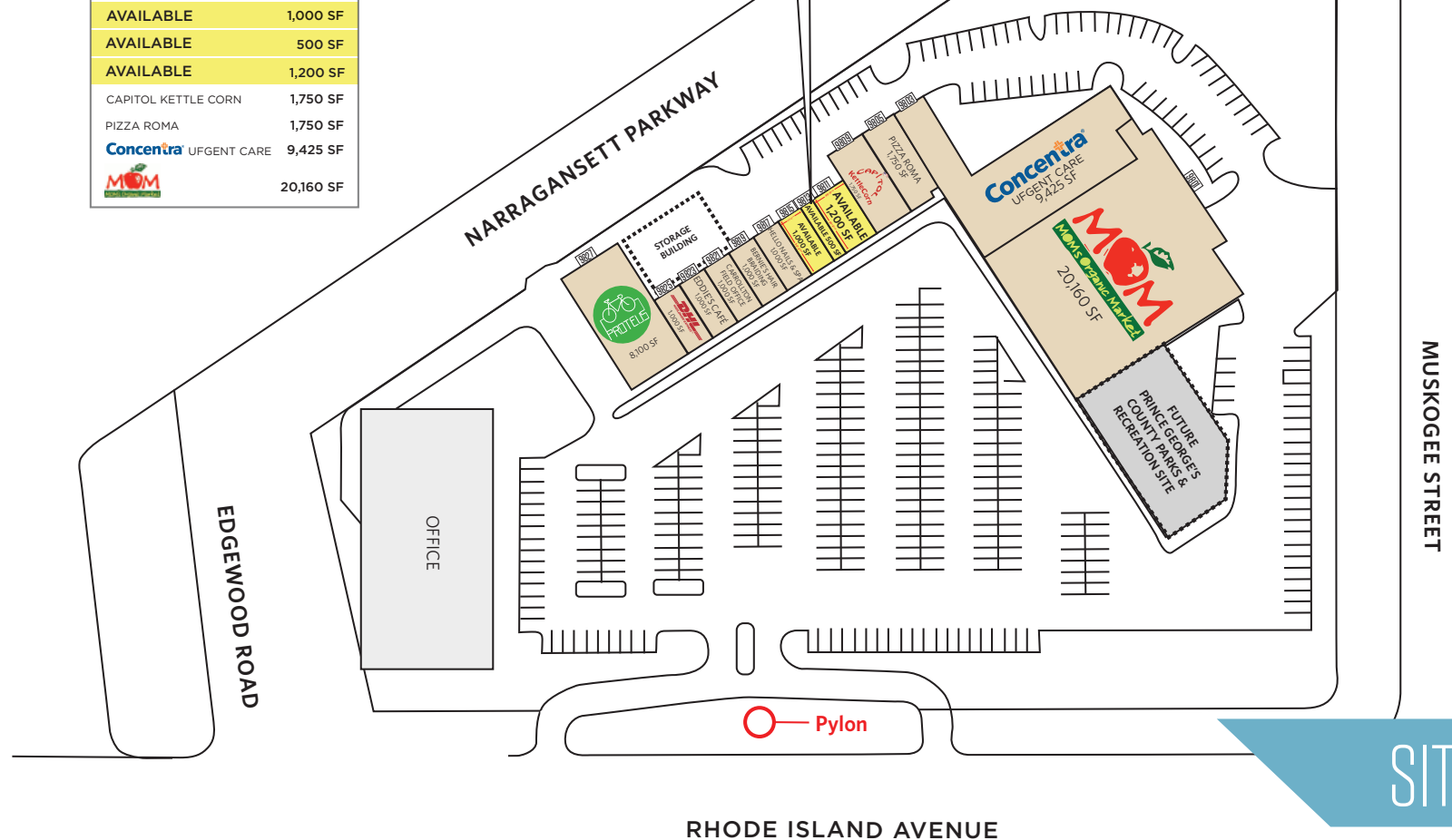
TENANT	SQ. FT.
PROTEUS BICYCLES	8,100 SF
DHL	1,000 SF
EDDIE'S CAFE	1,000 SF
CARROLLTON FIELD OFFICE	1,000 SF
BERNIE'S HAIR BRAIDING	1,000 SF
HELLO NAILS & SPA	1,000 SF
AVAILABLE	1,000 SF
AVAILABLE	500 SF
AVAILABLE	1,200 SF
CAPITOL KETTLE CORN	1,750 SF
PIZZA ROMA	1,750 SF
Concentra URGENT CARE	9,425 SF
MOM	20,160 SF

	LEASED
	AVAILABLE

DISCREET LISTING
CURRENTLY OCCUPIED BY
BARBER
(THIS TENANT IS OPEN AND OPERATING;
PLEASE DO NOT DISTURB.)

SIZE	CONDITION	TIMING
500 SF	"AS-IS" (EXISTING BARBER)	WITHIN 60 DAYS OF SIGNED LEASE
1,000 SF	"AS-IS" (FORMER HOLLYWOOD NUTRITION)	IMMEDIATE
1,200 SF	"AS-IS" (FORMER MARTIAL ARTS STUDIO)	IMMEDIATE

*Est. NNN: \$7.60 PSF



SITE PLAN

Mai Vo
mvo@klnb.com
703-268-2722

Matt Copeland
mcpeland@klnb.com
443-632-2051

Michael Ginsburg
mginsburg@klnb.com
443-632-2041

100 West Rd, Suite 505
Baltimore, MD 21204
klnb.com

klnb

HOLLYWOOD SHOPPING CENTER

9805 Rhode Island Avenue, College Park, MD 20740
Prince George's County



Mai Vo
mvo@klnb.com
703-268-2722

Matt Copeland
mcpeland@klnb.com
443-632-2051

Michael Ginsburg
mginsburg@klnb.com
443-632-2041

100 West Rd, Suite 505
Baltimore, MD 21204
klnb.com

klnb

HOLLYWOOD SHOPPING CENTER

9805 Rhode Island Avenue, College Park, MD 20740
Prince George's County

CLICK TO VIEW PROPERTY WEBSITE

For More Information, Please Contact:

Mai Vo

mvo@klnb.com
703-268-2722

Matt Copeland

mcopeland@klnb.com
443-632-2051

Michael Ginsburg

mginsburg@klnb.com
443-632-2041

100 West Rd, Suite 505
Baltimore, MD 21204

klnb.com



facebook.com/KLNBCRE



linkedin.com/company/klnb



instagram.com/klnbcre

While we have no reason to doubt the accuracy of any of the information supplied, we cannot, and do not, guarantee its accuracy. All information should be independently verified prior to a purchase or lease of the property. We are not responsible for errors, omissions, misuse, or misinterpretation of information contained herein and make no warranty of any kind, express or implied, with respect to the property or any other matters.

klnb