



JOIN THESE RETAILERS



RETAIL FOR LEASE

- Regional retail center located on Campbell Blvd at Franklin Square Dr (across from Nottingham Square) in White Marsh, MD
- The center is provided with tremendous exposure to both Philadelphia Rd & Campbell Blvd
- Less than one-half mile from the 1,698,114 SF White Marsh Mall, which is anchored by Macy's, JCPenney, and IKEA

AMANDA DEVINNEY

adevinney@klnb.com | 443-632-2045

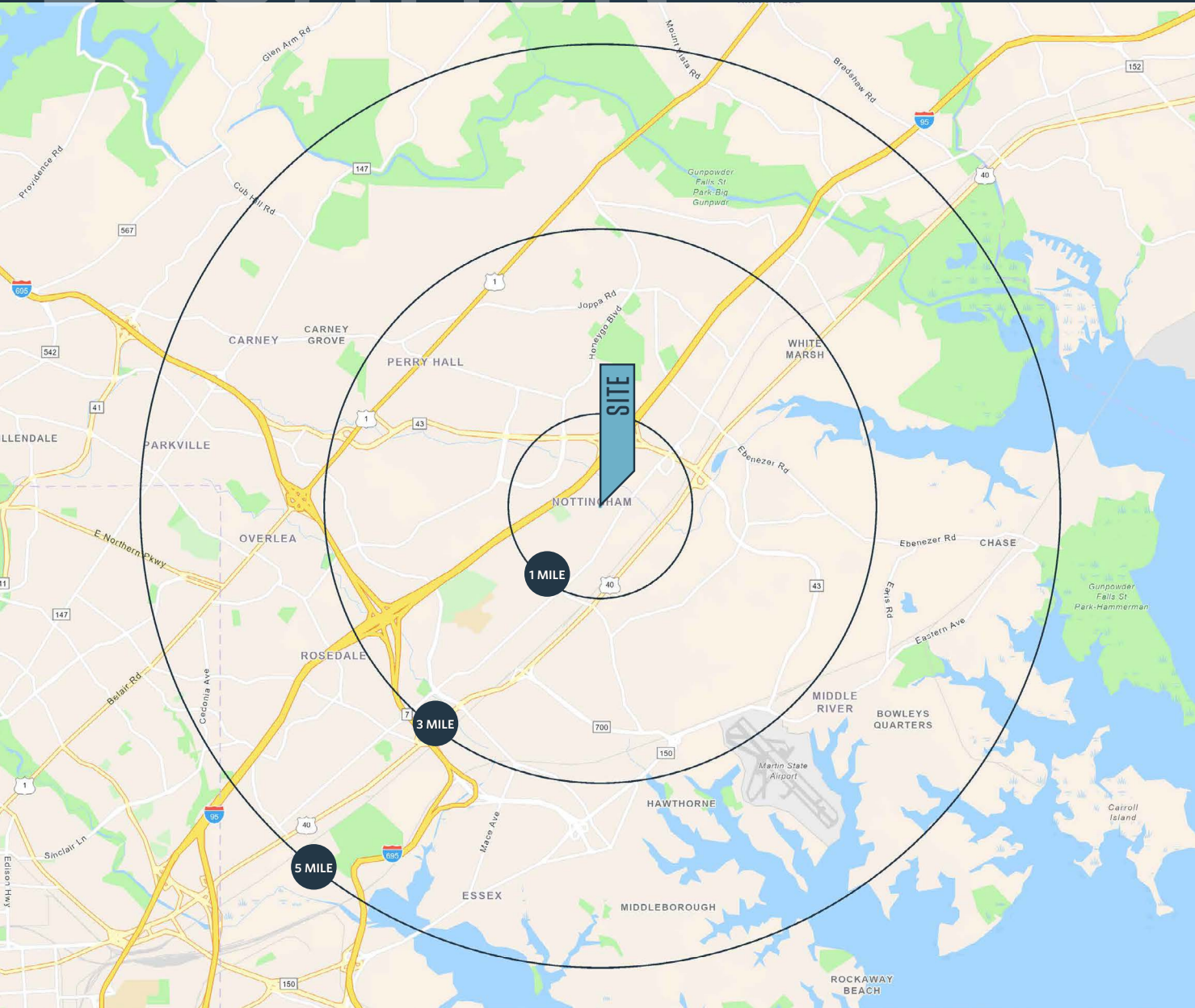
MATT COPELAND

mcopeland@klnb.com | 443-632-2051

LOCATION

NOTTINGHAM COMMONS

PHILADELPHIA RD & CAMPBELL BLVD, WHITE MARSH, MD, BALTIMORE COUNTY



DEMOGRAPHICS | 2025:

	1-MILE	3-MILE	5-MILE
Population	6,664	83,995	225,893
Daytime Population	13,765	82,929	187,582
Households	2,887	32,177	89,774
Average HH Income	\$114,410	\$116,734	\$108,875

[CLICK TO DOWNLOAD DEMOGRAPHIC REPORT](#)

TRAFFIC COUNTS | 2024:

Campbell Blvd	20,920 ADT
Philadelphia Rd	18,943 ADT
Franklin Square Dr	10,670 ADT

AMANDA DEVINNEY

adevinney@klnb.com | 443-632-2045

MATT COPELAND

mcopeland@klnb.com | 443-632-2051



NOTTINGHAM COMMONS

PHILADELPHIA RD & CAMPBELL BLVD, WHITE MARSH, MD, BALTIMORE COUNTY

John F Kennedy Memo



AMANDA DEVINNEY
 adevinney@klnb.com | 443-632-2045

MATT COPELAND
 mcopeland@klnb.com | 443-632-2051

SITE PLAN

NOTTINGHAM COMMONS

PHILADELPHIA RD & CAMPBELL BLVD, WHITE MARSH, MD, BALTIMORE COUNTY



TENANT LIST

AOA	Five Below	8,050 SF	GOC	Navy Federal Credit Union	750 SF	ROA	Canton Car Wash	11,024 SF
AOB	MOM's Organic Market	15,000 SF	GOD	Hair Cuttery	1,125 SF	ROB	Applebee's	6,138 SF
AOC	Petco	12,250 SF	GOF	European Wax Center	1,425 SF	ROC	Chipotle	2,209 SF
AOD	TJ Maxx	22,035 SF	GOG	Vox Nails	1,500 SF	ROD	Panda Express	2,600 SF
AOE	DSW	15,000 SF	GOH	&pizza	1,800 SF	ROE	Taco Bell	1.42 Acres
FOA	Massage Envy	2,700 SF	GOJ	AVAILABLE 11/1/2026	1,650 SF	ROF	AAA MidAtlantic	9,300 SF
FOC	Açaí Bowl	1,920 SF	GOK	El Gran Pollo	1,875 SF			
FOE	Sleepy's	4,200 SF	GOL	My Eye Doctor	1,875 SF			
GOA	Aspen Dental	3,375 SF	GOR	CAVA	2,625 SF			

AMANDA DEVINNEY

adevinney@klnb.com | 443-632-2045

MATT COPELAND

mcopeiland@klnb.com | 443-632-2051

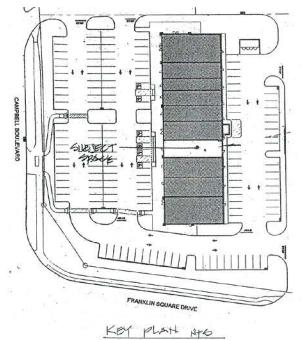
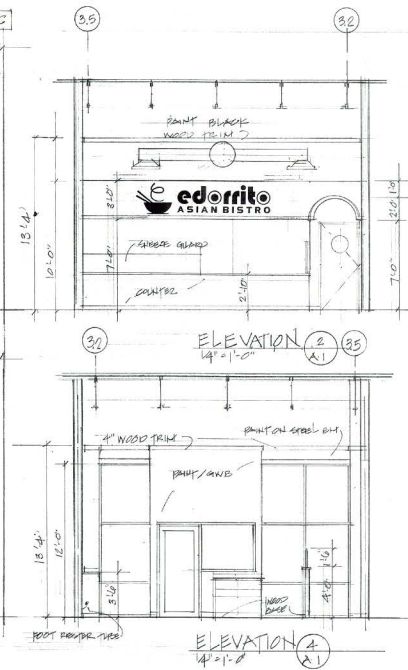
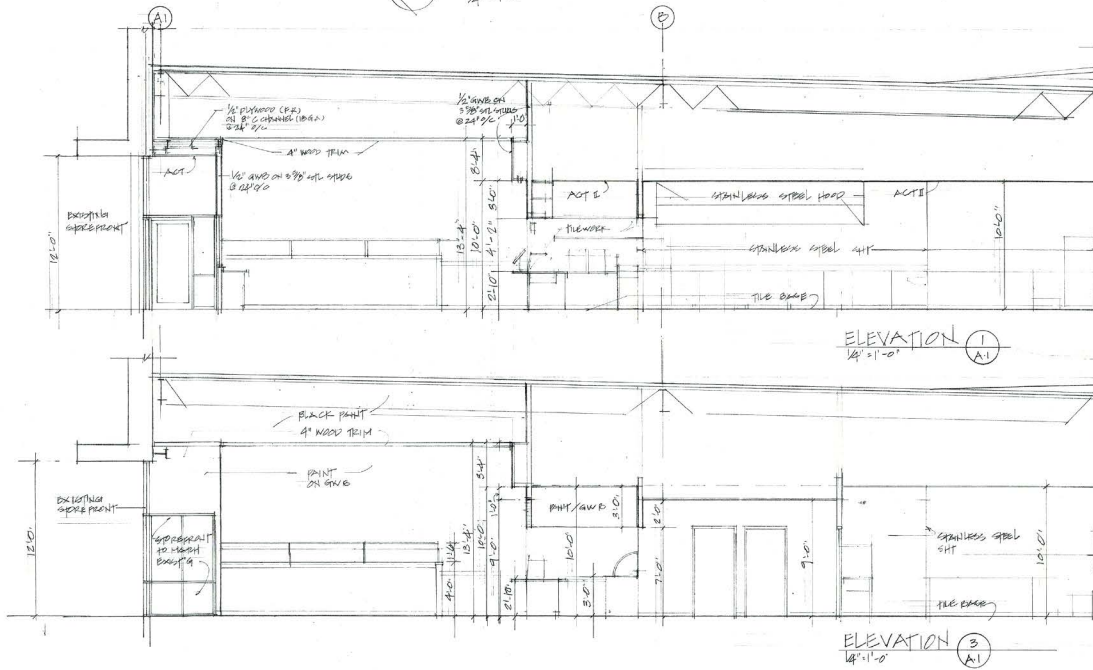
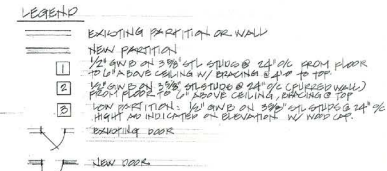
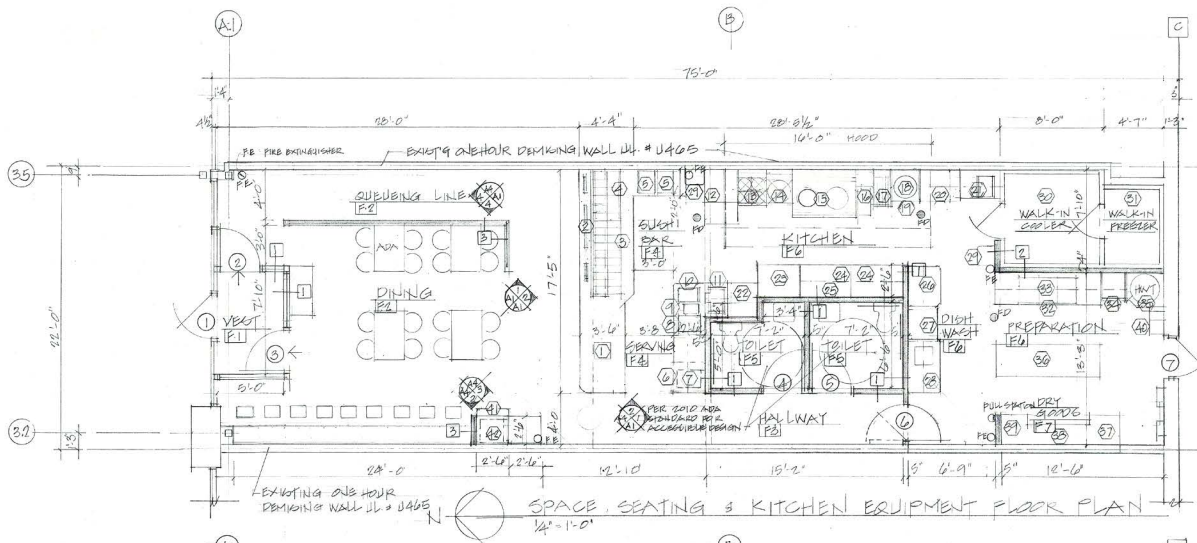


SPACE:GO

NOTTINGHAM COMMONS

PHILADELPHIA RD & CAMPBELL BLVD, WHITE MARSH, MD, BALTIMORE COUNTY

2ND GEN RESTAURANT - 1,650 SF
AVAILABLE 11/1/2026



AMANDA DEVINNEY
 adevinney@klnb.com | 443-632-2045

MATT COPELAND
 mcopeland@klnb.com | 443-632-2051





NOTTINGHAM COMMONS

PHILADELPHIA RD & CAMPBELL BLVD, WHITE MARSH, MD, BALTIMORE COUNTY

FOR MORE INFORMATION, PLEASE CONTACT:

AMANDA DEVINNEY

adevinney@klnb.com

443-632-2045

MATT COPELAND

mcopeland@klnb.com

443-632-2051

100 West Road, Suite 505, Towson, MD 21204

.....

klnb.com



[instagram.com/klnbcre](https://www.instagram.com/klnbcre)



[linkedin.com/company/klnb](https://www.linkedin.com/company/klnb)



[facebook.com/KLNBCRE](https://www.facebook.com/KLNBCRE)

[CLICK TO VIEW PROPERTY WEBSITE](#)

While we have no reason to doubt the accuracy of any of the information supplied, we cannot, and do not, guarantee its accuracy. All information should be independently verified prior to a purchase or lease of the property. We are not responsible for errors, omissions, misuse, or misinterpretation of information contained herein and make no warranty of any kind, express or implied, with respect to the property or any other matters.