



NEARBY RETAILERS



RETAIL OR PAD SITES FOR LEASE

- Visibility: Direct visibility on Hull St (47,000 vehicles per day)
- Access: Two signalized intersections
- Demographics: \$175,000 Average HH Income (3-Mile)
- Path of Growth: Located in fastest-growing county in Virginia (2024)

BO GALLES

bgalles@klnb.com | 703-268-2712

BOB BROWNING

bbrowning@klnb.com | 703-268-2717

COSBY CROSSING

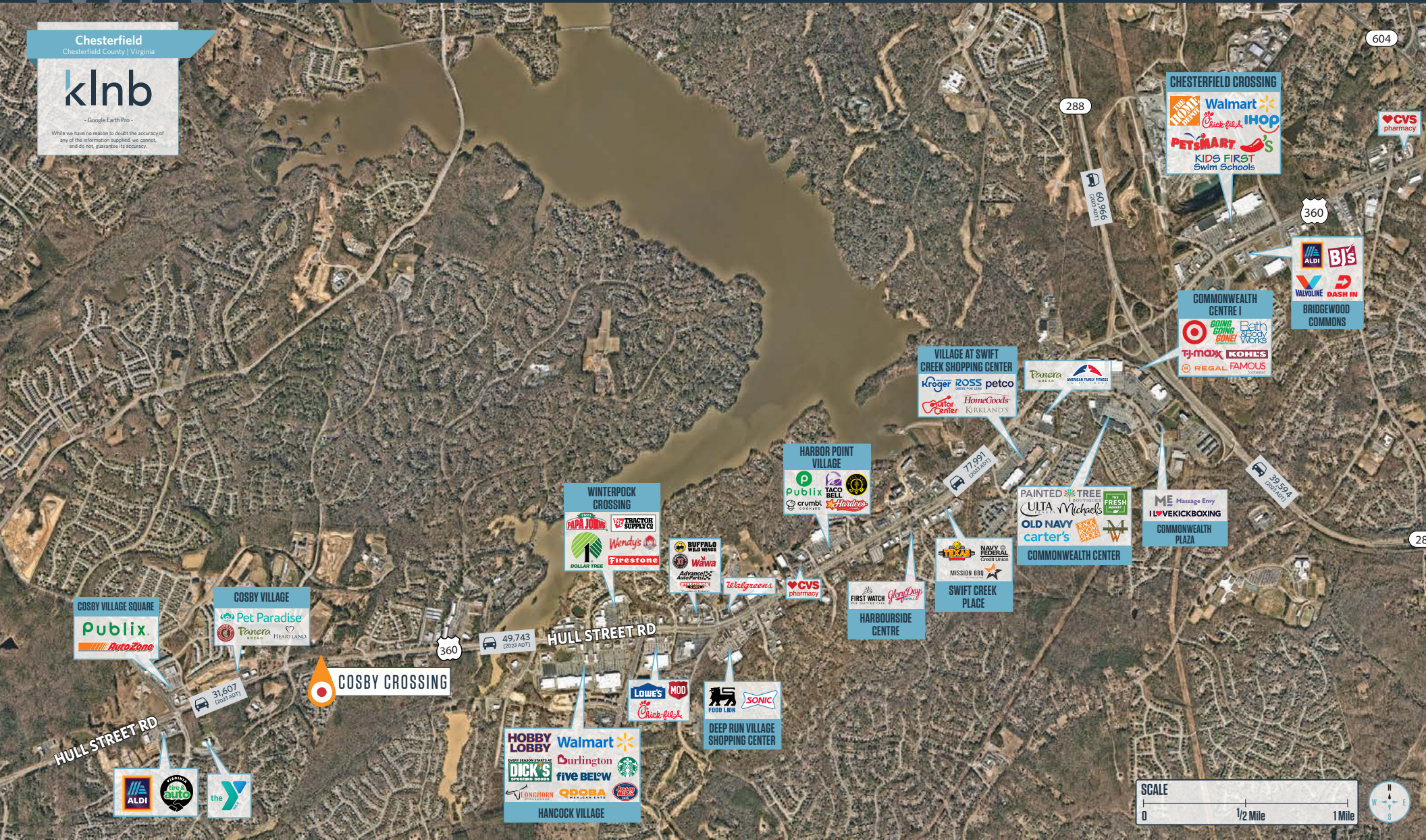
1516 & 15200 HULL STREET ROAD, CHESTERFIELD, VA 23832, CHESTERFIELD COUNTY

Chesterfield
Chesterfield County | Virginia

klnb

- Google Earth Pro -

While we have no reason to doubt the accuracy of any of the information supplied, we cannot, and do not, guarantee its accuracy.



BO GALLES

bgalles@klnb.com | 703-268-2712

BOB BROWNING

bbrowning@klnb.com | 703-268-2717

klnb

HOUSING

COSBY CROSSING

1516 & 15200 HULL STREET ROAD, CHESTERFIELD, VA 23832, CHESTERFIELD COUNTY

Chesterfield
Chesterfield County | Virginia

klnb

- Google Earth Pro -

While we have no reason to doubt the accuracy of any of the information supplied, we cannot, and do not, guarantee its accuracy.



PLANNED DEVELOPMENTS



FUTURE DEVELOPMENTS



3,500
HOMES
MAGNOLIA
GREEN



200
HOMES
PARKE AT
COLD CREEK



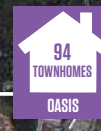
194
UNITS
THE VILLAS AT
SWIFT CREEK



104
CONDOS
COSBY
TERRACE



105
TOWNHOMES
MILLWOOD
SIGORA



94
TOWNHOMES
OASIS



570
MULTI-FAMILY
UNITS
MADISON
CROSSING



HARPER'S
MILL WEST



ABBERLY AT
CARTER'S FARM



1,700
HOMES
HARPER'S
MILL



ASTORIA

SITE

360

31,607
1,023 ADT

49,743
1,023 ADT

HULL STREET RD



BO GALLES

bgalles@klmb.com | 703-268-2712

BOB BROWNING

bbrowning@klmb.com | 703-268-2717

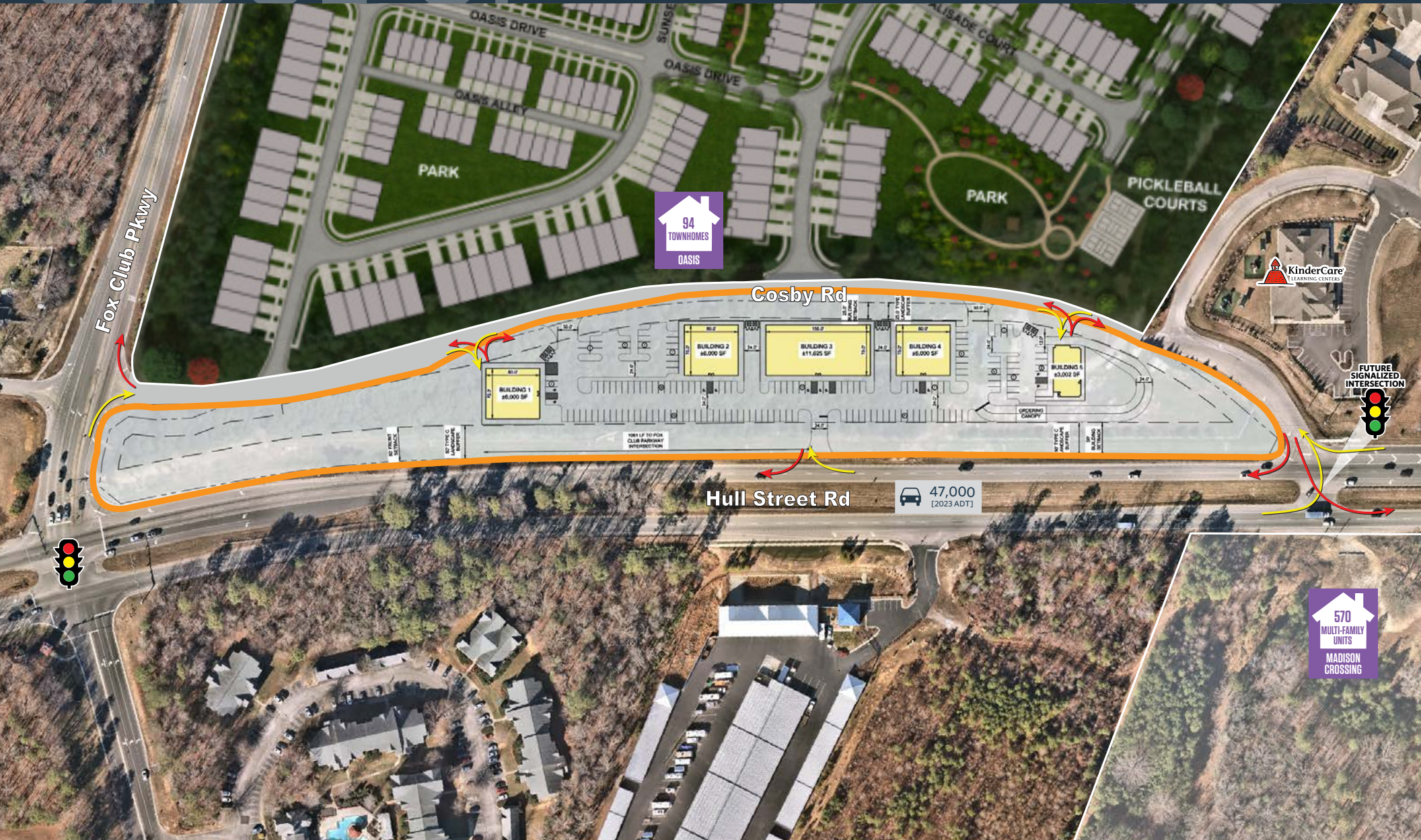
klmb



CLOSE UP

COSBY CROSSING

1516 & 15200 HULL STREET ROAD, CHESTERFIELD, VA 23832, CHESTERFIELD COUNTY



BO GALLES

bgalles@klnb.com | 703-268-2712

BOB BROWNING

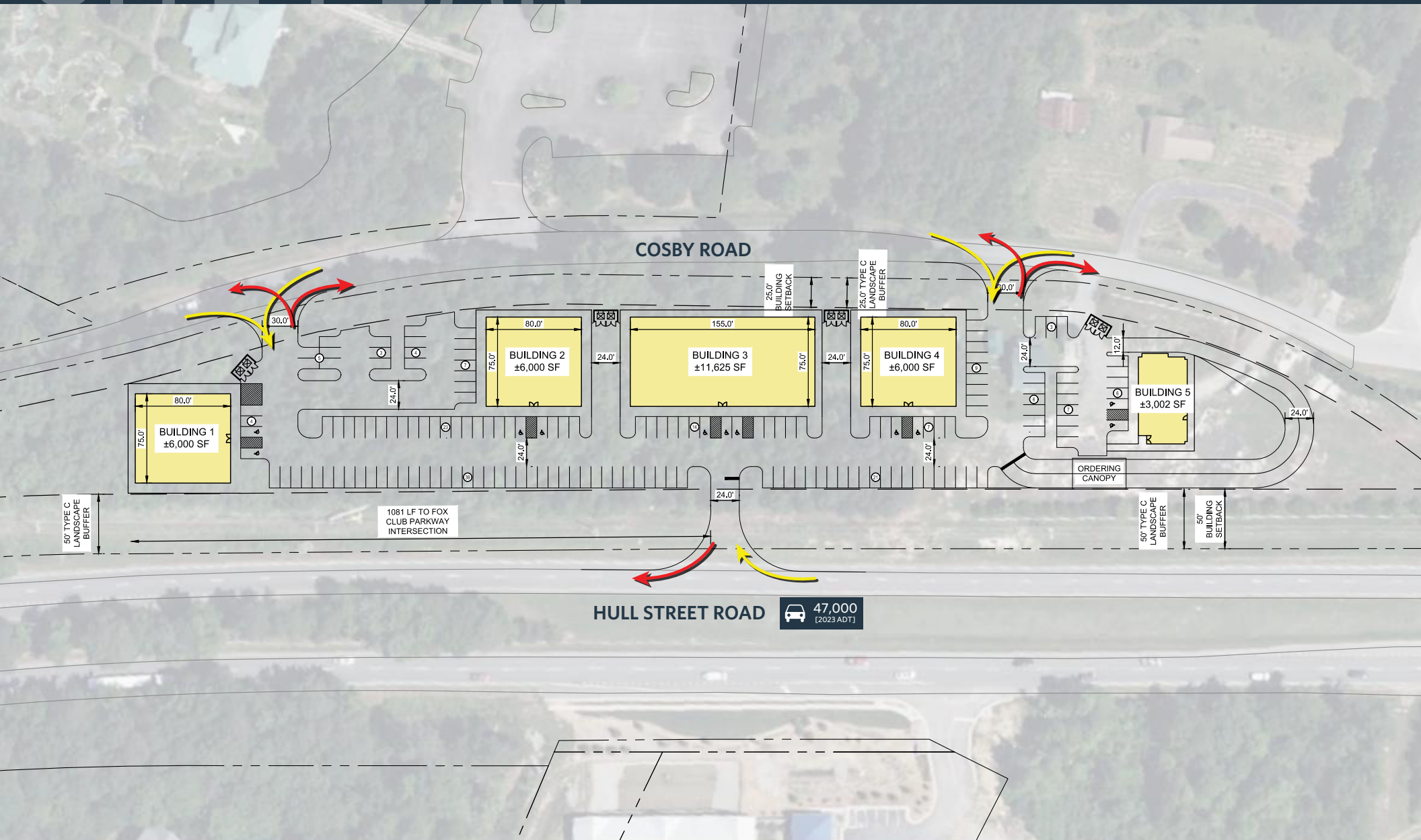
bbrowning@klnb.com | 703-268-2717

klnb

SITE PLAN

COSBY CROSSING

1516 & 15200 HULL STREET ROAD, CHESTERFIELD, VA 23832, CHESTERFIELD COUNTY



BO GALLES

bgalles@klnb.com | 703-268-2712

BOB BROWNING

bbrowning@klnb.com | 703-268-2717



RENDERINGS | COSBY CROSSING

1516 & 15200 HULL STREET ROAD, CHESTERFIELD, VA 23832, CHESTERFIELD COUNTY



BO GALLES

bgalles@klnb.com | 703-268-2712

BOB BROWNING

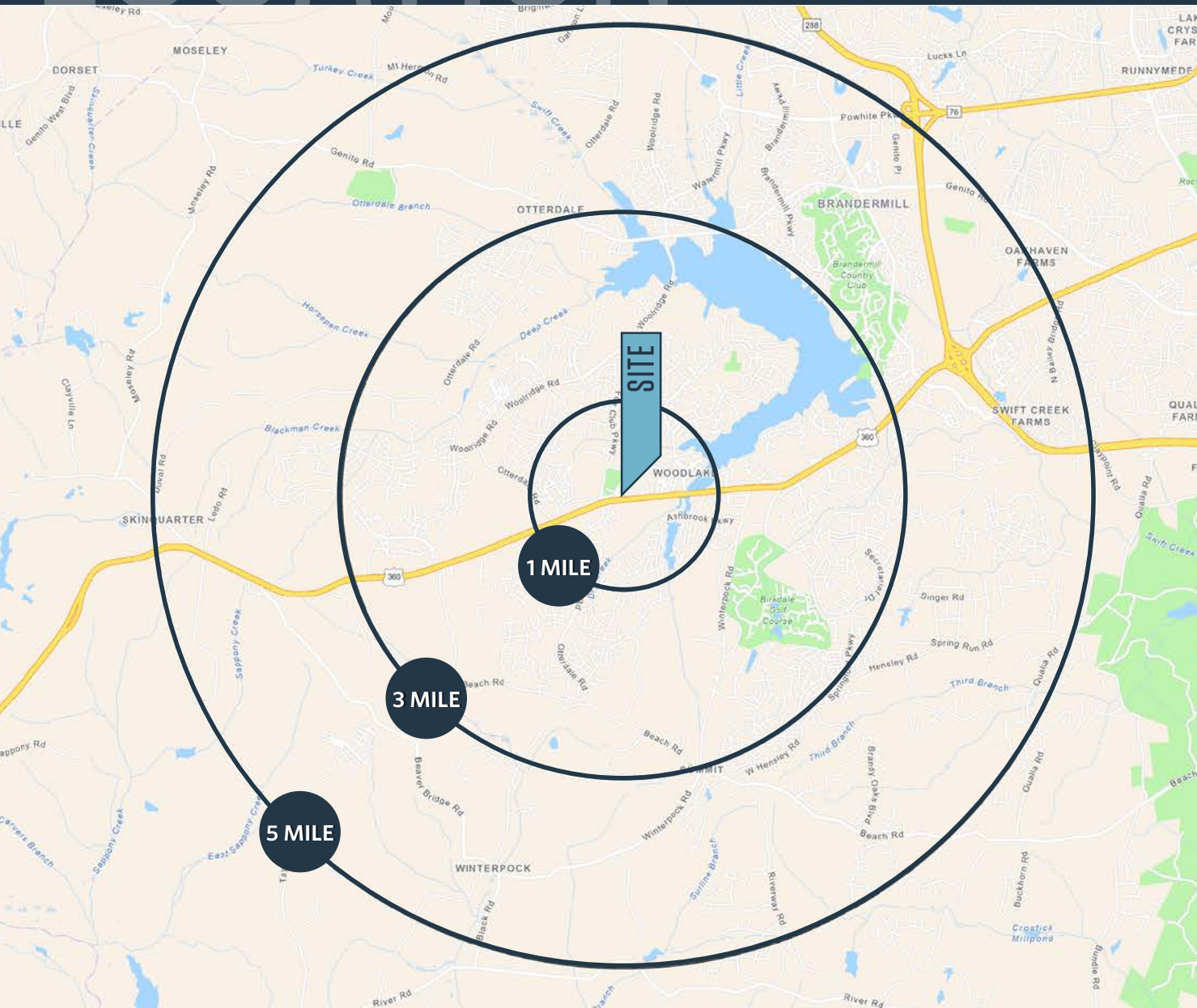
bbrowning@klnb.com | 703-268-2717

klnb

LOCATION

COSBY CROSSING

1516 & 15200 HULL STREET ROAD, CHESTERFIELD, VA 23832, CHESTERFIELD COUNTY



DEMOGRAPHICS | 2024:

1-MILE	3-MILE	5-MILE
Population		
7,717	44,890	84,137
Daytime Population		
2,022	11,018	24,536
Households		
2,663	15,137	30,052
Average HH Income		
\$155,741	\$175,575	\$164,722

[CLICK TO DOWNLOAD DEMOGRAPHIC REPORT](#)

TRAFFIC COUNTS | 2023:

Hull Street Road	38,978 ADT
Fox Club Parkway	4,390 ADT

BO GALLES

bgalles@klnb.com | 703-268-2712

BOB BROWNING

bbrowning@klnb.com | 703-268-2717

klnb



COSBY CROSSING

15516 & 15200 HULL STREET ROAD, CHESTERFIELD, VA 23832, CHESTERFIELD COUNTY

FOR MORE INFORMATION, PLEASE CONTACT:

BO GALLES

bgalles@klnb.com

703-268-2712

BOB BROWNING

bbrowning@klnb.com

703-268-2717

8065 Leesburg Pike, Suite 700, Tysons, VA 22182

.....

klnb.com



[instagram.com/klnbcre](https://www.instagram.com/klnbcre)



[linkedin.com/company/klnb](https://www.linkedin.com/company/klnb)



[facebook.com/KLNBCRE](https://www.facebook.com/KLNBCRE)

CLICK TO VIEW PROPERTY WEBSITE

While we have no reason to doubt the accuracy of any of the information supplied, we cannot, and do not, guarantee its accuracy. All information should be independently verified prior to a purchase or lease of the property. We are not responsible for errors, omissions, misuse, or misinterpretation of information contained herein and make no warranty of any kind, express or implied, with respect to the property or any other matters.