



**PROMINENT
BUILDING SIGNAGE
AVAILABLE**



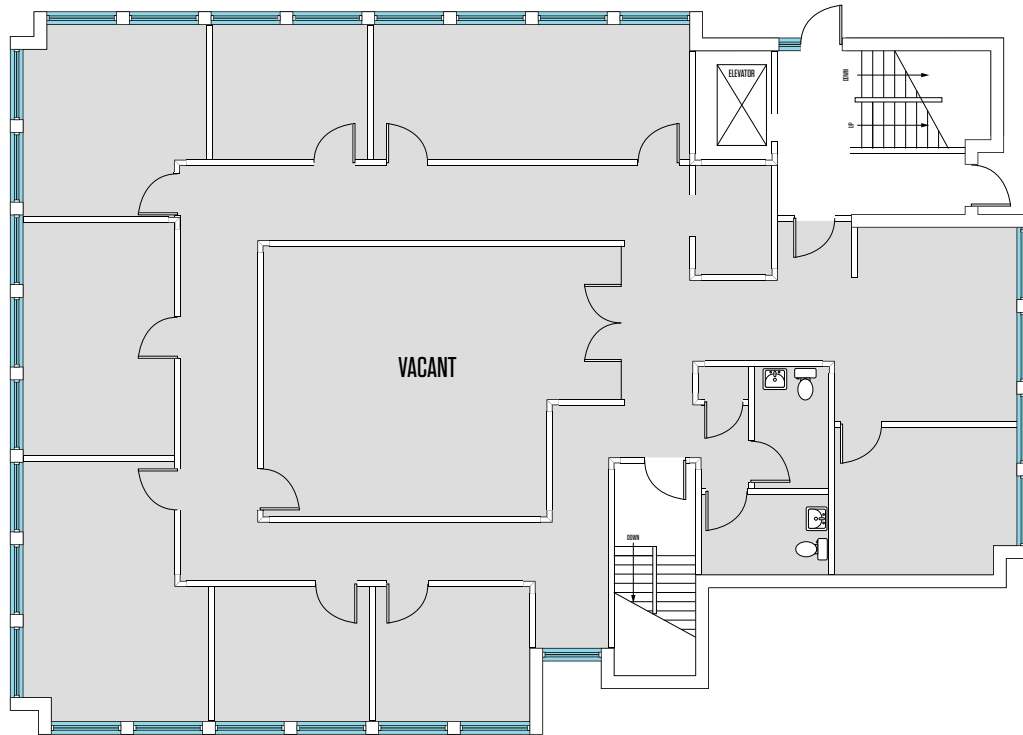
FOR SALE OR LEASE

PROPERTY HIGHLIGHTS:

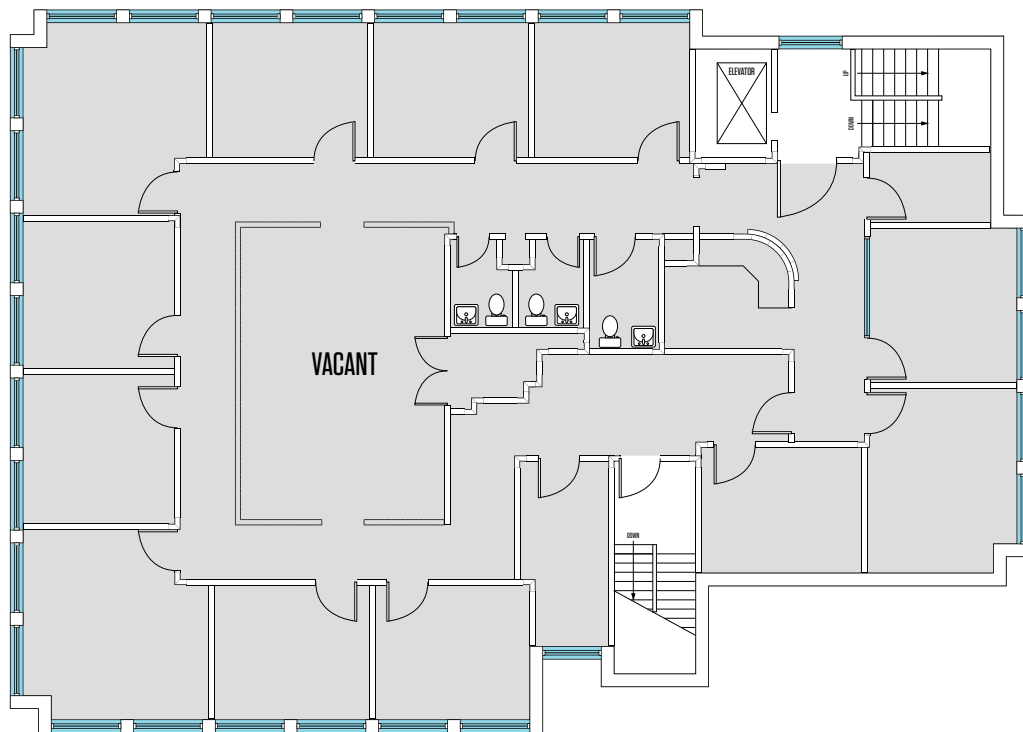
- Located in the heart of Towson, MD with easy access to I-695 Beltway, I-83 and I-95
- Easy walk to Towson Town Center
- Spectacular views
- Abundance of windowed offices
- 56 free surface parking spaces
- Full service lease terms
- Up to 7,200 SF Available
- Multiple single office suites of ± 100 SF to ± 200 SF available



FLOOR PLAN: 1ST FLOOR



FLOOR PLAN: 3RD FLOOR



PHOTOS



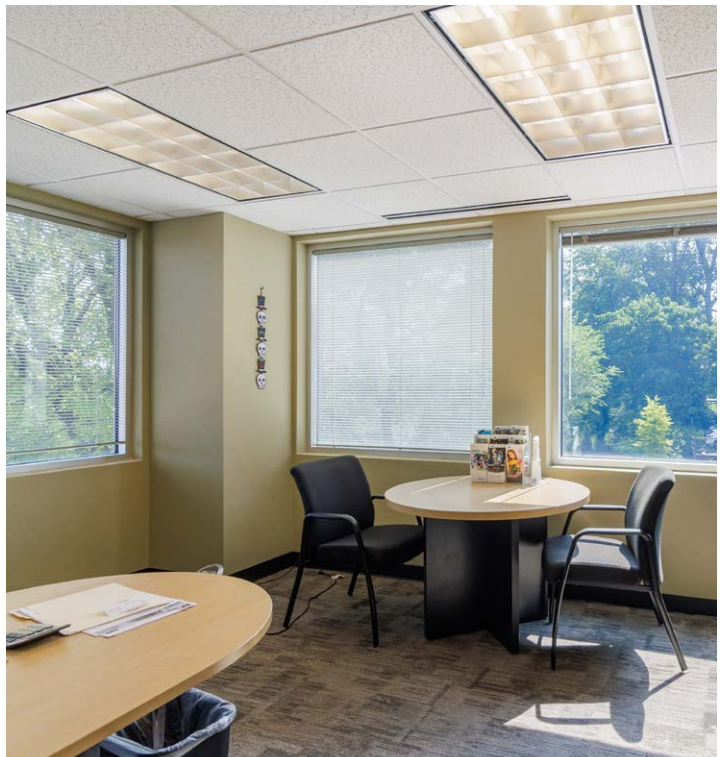
CONFERENCE ROOM



RECEPTION AREA



WINDOWED CONFERENCE ROOM



CORNER OFFICE

400 E. JOPPA ROAD

Towson, MD 21286



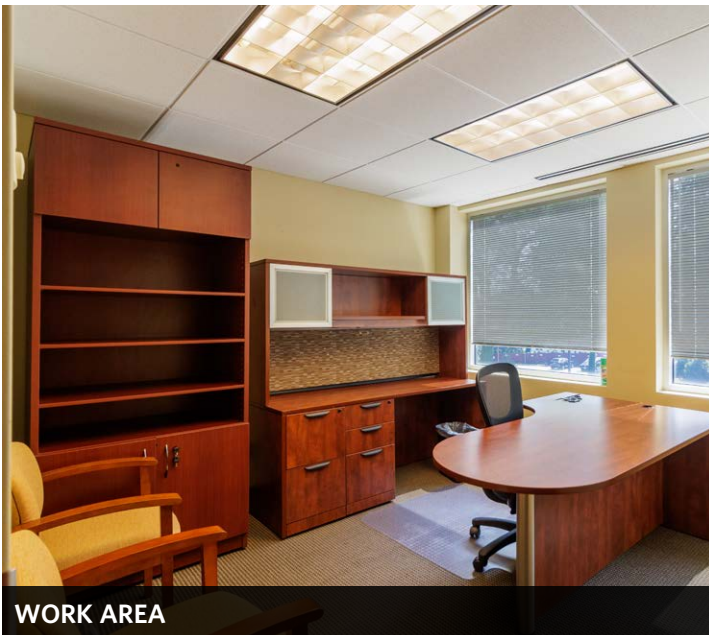
PHOTOS



RECEPTION AREA



WINDOWED CONFERENCE ROOM



WORK AREA



KITCHEN

While we have no reason to doubt the accuracy of any of the information supplied, we cannot, and do not, guarantee its accuracy. All information should be independently verified prior to a purchase or lease of the property. We are not responsible for errors, omissions, misuse, or misinterpretation of information contained herein and make no warranty of any kind, express or implied, with respect to the property or any other matters.