

1100 LIGHT ST

Baltimore, MD 21230
Baltimore City

1,520 SF AVAILABLE



NEARBY RETAILERS

DUNKIN'  **M&T Bank**
&pizza **WAYWARD**
—OLD SOUTHERN BAR & KITCHEN—

CROSS STREET
ESTD 1980
MARKET

ACE



CEREMONY
COFFEE ROASTERS

RETAIL FOR LEASE

- 1,520 SF Available
- Located in the heart of Federal Hill adjacent to Cross Street Market
- Located just minutes from the Inner Harbor, Ravens Stadium and Camden Yards
- Surrounded by a mix of daytime and residential population

LEASED BY:

klnb

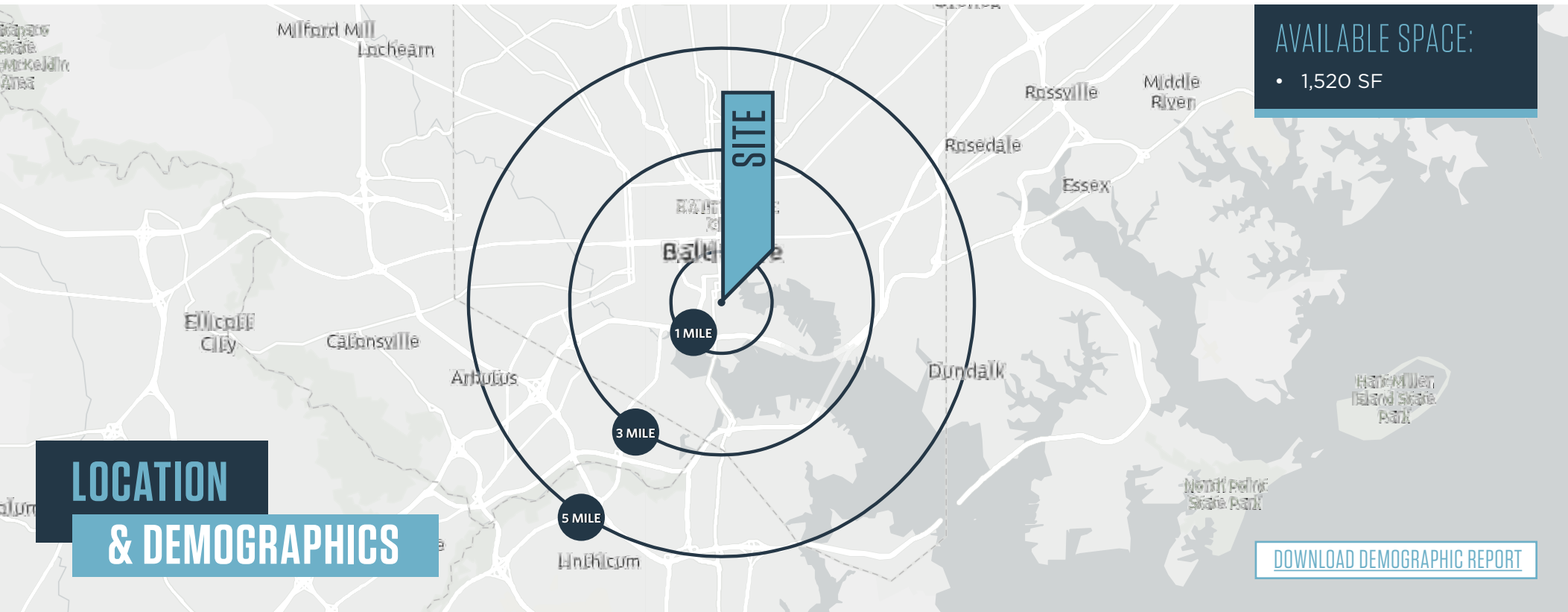
Michael Ginsburg
mginsburg@klnb.com
443-632-2041

100 West Road, Suite 505, Towson, MD 21204
klnb.com

1100 LIGHT ST





Baltimore, MD 21230

Baltimore City



TRAFFIC COUNTS | 2024

I-395	63,901 ADT
Light St	9,475 ADT
E Cross St	1,555 ADT

	1-MILE	3-MILES	5-MILES				
	Population				Households		
	29,215	215,954	466,249		16,924	103,721	207,218
	Daytime Population				Average Household Income		
	70,757	336,522	573,727		\$137,253	\$91,530	\$87,270

Michael Ginsburg
mginsburg@klnb.com
443-632-2041

100 West Road, Suite 505
Towson, MD 21204
klnb.com

klnb

Baltimore, MD 21230
Baltimore City

Inner Harbor

- Harbor Place Development**: 300,000+ SF of commercial space, 18.7 AC public space, 900 residential units.
- 1100 Light St**: Liv's Tavern Wayward.
- Harbor East**: Includes callouts for Harbor East, Harbor Point, and Historic Fells Point.
- Harbor Point**: Includes callouts for Harbor Point and Historic Fells Point.
- Historic Fells Point**: Includes callouts for Historic Fells Point and Locust Point.
- Locust Point**: Includes callouts for Locust Point and Fort Mchenry.
- Fort Mchenry**: Includes callouts for Fort Mchenry and the Baltimore Peninsula.
- Federal Hill**: Includes callouts for Federal Hill and the Baltimore Peninsula.
- Baltimore Peninsula**: 1.1 million SF mixed-use development.

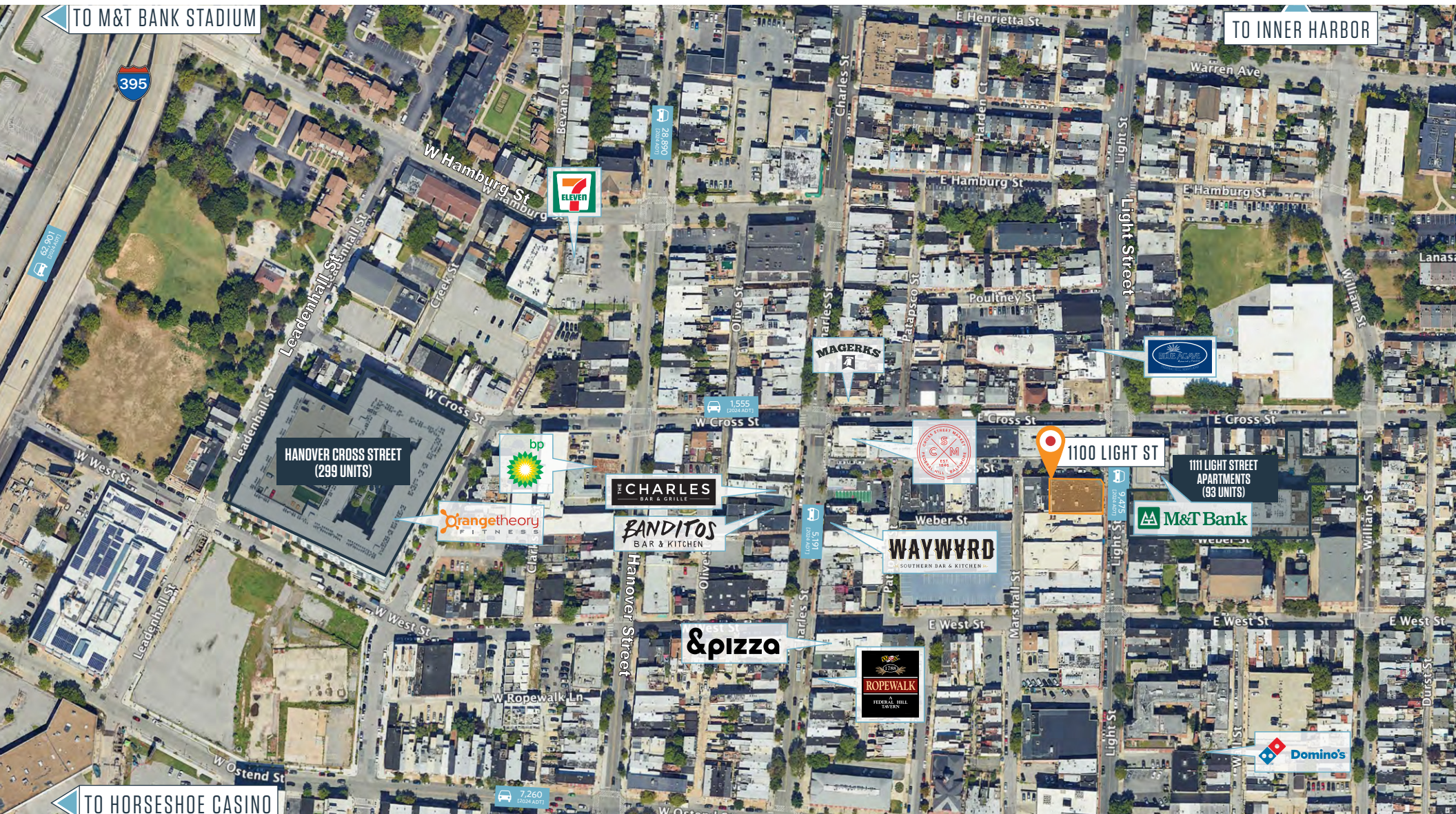
Other Callouts:

- CFB Bank Arena**: 45,971 seats, 2.28M annual visitors.
- Top Golf**: 90+ all-weather bays.
- Horseshoe**: Casino + Baltimore.
- Order & Chaos**.
- Corepower Yoga**.
- Royal Farms**.
- Anthem House**: 292 apartments.
- Limnello**.
- The Bar Method**.
- Copper & Shark**.
- Merritt Clubs**.
- Giant**.
- Harris Teeter**.
- Samos**: Greek island grill.
- Dunkin'**.
- F45**.
- THQ**: Bakery and deli.
- The Shoppes & Offices at Mchenry Row**.
- Subway**.
- Five Below**.
- Great Clips**.
- GNC LiveWell**.
- Uptown**.
- Dollar Tree**.
- Starbucks**.
- Mellie's**.
- Shady Grove**.
- Mat Bank**.
- Don't Know**.
- Order & Chaos**.
- Corepower Yoga**.
- Royal Farms**.
- Anthem House**: 292 apartments.
- Limnello**.
- The Bar Method**.
- Copper & Shark**.
- Merritt Clubs**.
- Giant**.
- Harris Teeter**.
- Samos**: Greek island grill.
- Dunkin'**.
- F45**.
- THQ**: Bakery and deli.
- The Shoppes & Offices at Mchenry Row**.
- Subway**.
- Five Below**.
- Great Clips**.
- GNC LiveWell**.
- Uptown**.
- Dollar Tree**.
- Starbucks**.
- Mellie's**.
- Shady Grove**.
- Mat Bank**.
- Don't Know**.

1100 LIGHT ST

Baltimore, MD 21230
Baltimore City

MIDVIEW AERIAL



Michael Ginsburg
mginsburg@klnb.com
443-632-2041

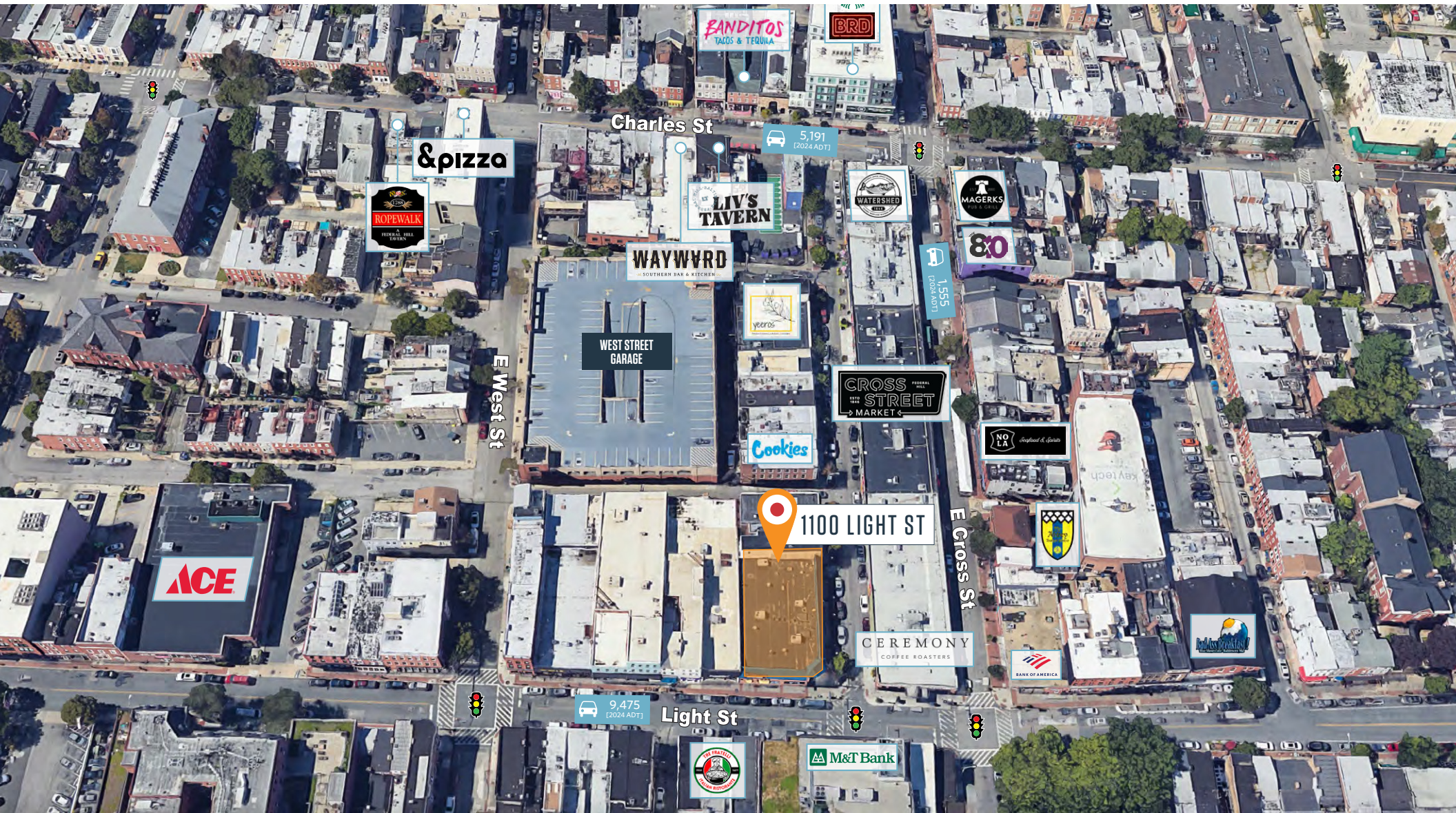
100 West Road, Suite 505
Towson, MD 21204
klnb.com

klnb

1100 LIGHT ST

Baltimore, MD 21230
Baltimore City

BIRDSEYE AERIAL



Michael Ginsburg
mginsburg@klnb.com
443-632-2041

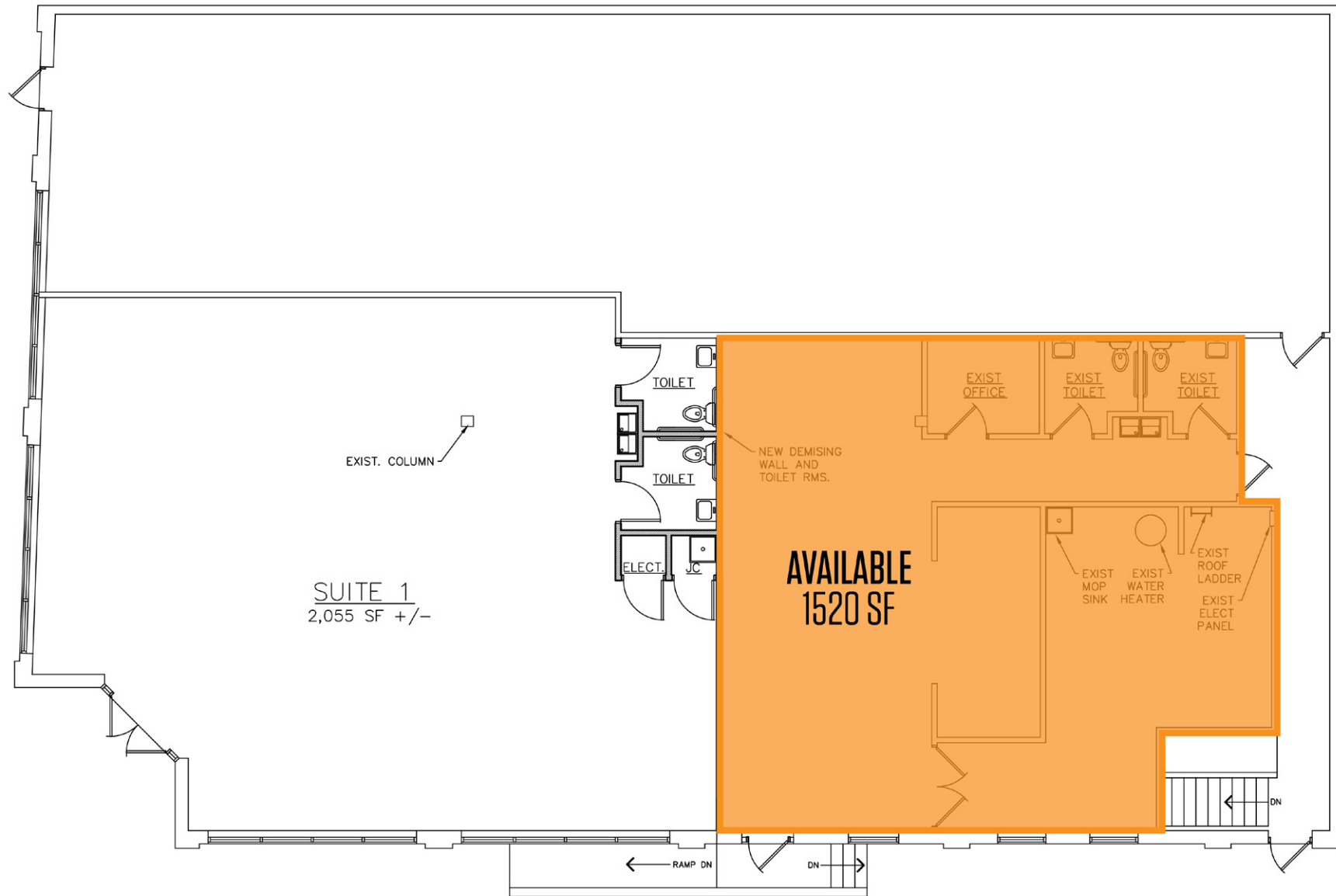
100 West Road, Suite 505
Towson, MD 21204
klnb.com

klnb

1100 LIGHT ST

Baltimore, MD 21230
Baltimore City

SITE PLAN



1100 LIGHT ST

Baltimore, MD 21230

Baltimore City

[CLICK TO VIEW PROPERTY WEBSITE](#)

For More Information, Please Contact:

Michael Ginsburg
mginsburg@klnb.com
443-632-2041



While we have no reason to doubt the accuracy of any of the information supplied, we cannot, and do not, guarantee its accuracy. All information should be independently verified prior to a purchase or lease of the property. We are not responsible for errors, omissions, misuse, or misinterpretation of information contained herein and make no warranty of any kind, express or implied, with respect to the property or any other matters.

100 West Road, Suite 505
Towson, MD 21204
klnb.com

