

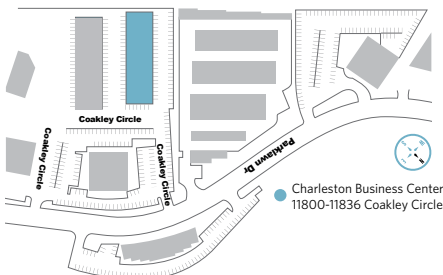


# FOR LEASE

## PROPERTY HIGHLIGHTS

### Building Specifications

- Building Type: Industrial
- 11800-11836 Coakley Circle
  - Building Size: 42,258 SF
  - Loading Dock: 2
  - Ceiling Height: 14'



### Features

- Surface parking
- Public transportation is available through Montgomery County's "Ride On" program
- Abundance of amenities, food service options and retail centers within walking distance

### Location

- Quick access to I-270 and I-495
- Two WMATA Metro stops (Twinbrook & North Bethesda) are within 2 miles



# CHARLESTON BUSINESS CENTER

11800-11882 Coakley Circle | Rockville, MD

## MARKET AERIAL

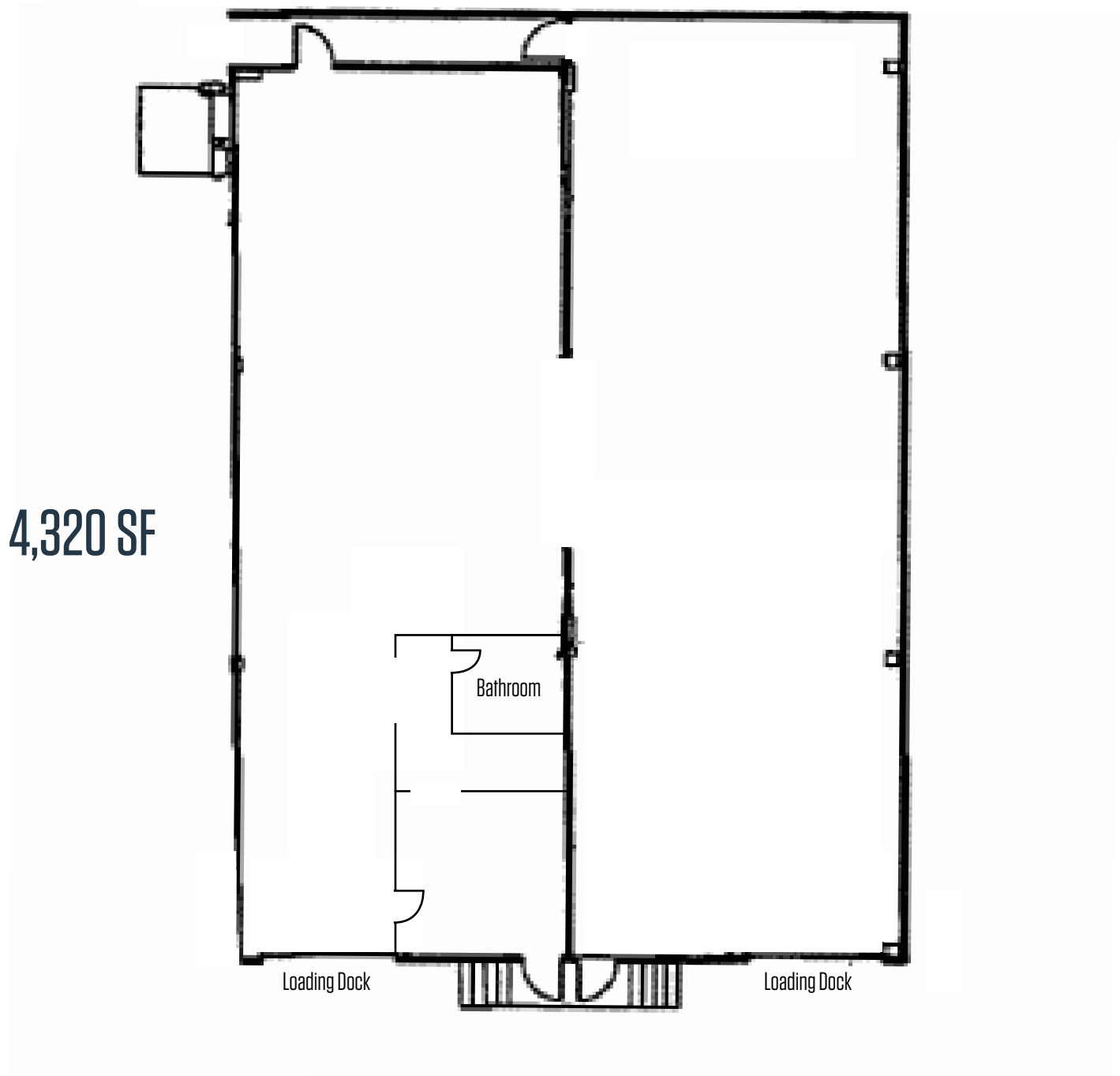


Kenneth Fellows  
kfellows@klnb.com  
301-222-0210

Robert Pugh  
rpugh@klnb.com  
301-222-0211

Keiry Martinez  
kmartinez@klnb.com  
703-334-5629

## PHOTO



# CHARLESTON BUSINESS CENTER

11800-11882 Coakley Circle | Rockville, MD

[CLICK TO VIEW PROPERTY WEBSITE](#)

For More Information, Please Contact:

**Kenneth Fellows**

kfellows@klnb.com

301-222-0210

**Robert Pugh**

rpugh@klnb.com

301-222-0211

**Keiry Martinez**

kmartinez@klnb.com

703-334-5629

12435 Park Potomac Ave, Suite 250,  
Rockville, MD, 20854

[klnb.com](http://klnb.com)



[instagram.com/klnbcre](https://www.instagram.com/klnbcre)



[linkedin.com/company/klnb](https://www.linkedin.com/company/klnb)



[facebook.com/KLNBCRE](https://www.facebook.com/KLNBCRE)

While we have no reason to doubt the accuracy of any of the information supplied, we cannot, and do not, guarantee its accuracy. All information should be independently verified prior to a purchase or lease of the property. We are not responsible for errors, omissions, misuse, or misinterpretation of information contained herein and make no warranty of any kind, express or implied, with respect to the property or any other matters.

**klnb**