



FOR LEASE

## PROPERTY HIGHLIGHTS

### Features

- Ample surface and structured parking
- Public transportation is available through Montgomery County's "Ride On" program
- Abundance of amenities, food service options and retail centers within walking distance

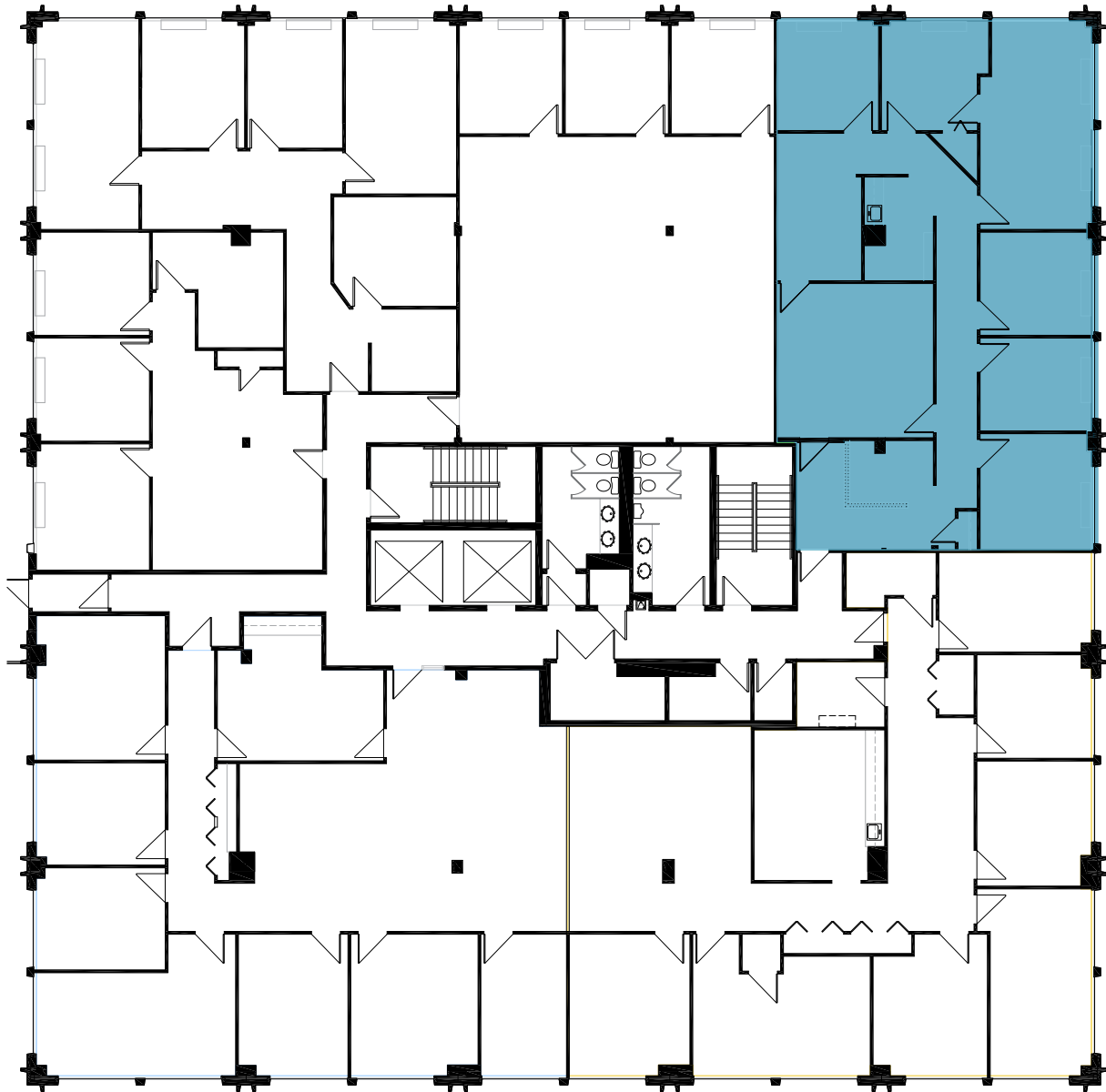
### Location

- Quick access to I-270 and I-495
- Two WMATA Metro stops (Twinbrook & North Bethesda) are within 2 miles
- Close to White Flint Plaza and Montrose Crossing Shopping Center

# SARATOGA BUILDING

11820 Parklawn Drive | Rockville, MD

## FLOOR PLAN - 2ND FLOOR



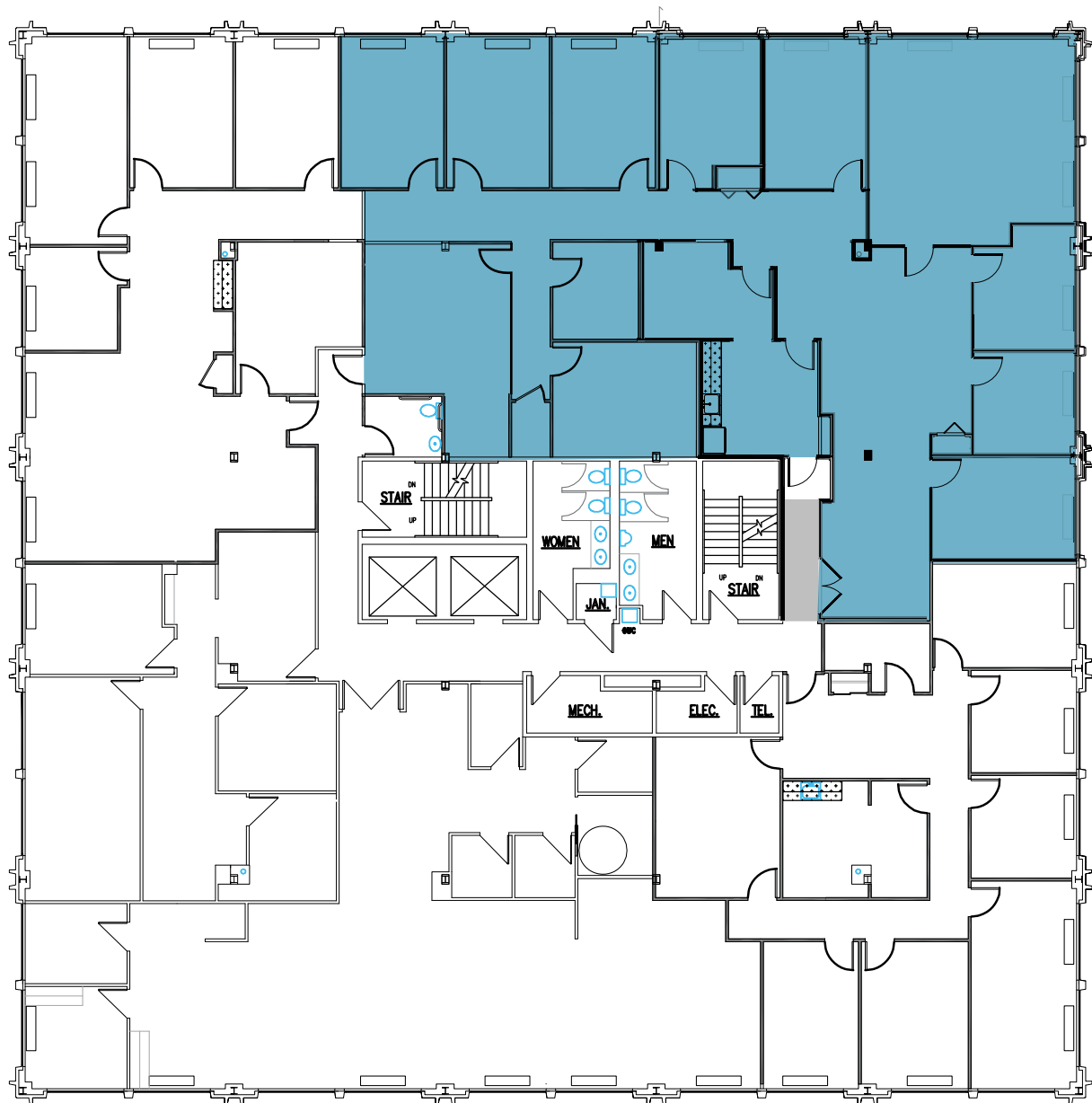
 SUITE 240  
1,987 SF

**Kenneth Fellows**  
kfellows@klnb.com  
301-222-0210

**Robert Pugh**  
rpugh@klnb.com  
301-222-0211

**Keiry Martinez**  
kmartinez@klnb.com  
703-334-5629

## FLOOR PLAN - 5TH FLOOR



**4,830 SF**  
**AVAILABLE 06/01/2026**

# SARATOGA BUILDING

11820 Parklawn Drive | Rockville, MD

[CLICK TO VIEW PROPERTY WEBSITE](#)

For More Information, Please Contact:

**Kenneth Fellows**

[kfellows@klnb.com](mailto:kfellows@klnb.com)

301-222-0210

**Robert Pugh**

[rpugh@klnb.com](mailto:rpugh@klnb.com)

301-222-0211

**Keiry Martinez**

[kmartinez@klnb.com](mailto:kmartinez@klnb.com)

703-334-5629

12435 Park Potomac Ave, Suite 250,  
Rockville, MD, 20854

[klnb.com](http://klnb.com)



[instagram.com/klnbcre](https://www.instagram.com/klnbcre)



[linkedin.com/company/klnb](https://www.linkedin.com/company/klnb)



[facebook.com/KLNBCRE](https://www.facebook.com/KLNBCRE)

While we have no reason to doubt the accuracy of any of the information supplied, we cannot, and do not, guarantee its accuracy. All information should be independently verified prior to a purchase or lease of the property. We are not responsible for errors, omissions, misuse, or misinterpretation of information contained herein and make no warranty of any kind, express or implied, with respect to the property or any other matters.

**klnb**