

1220 & 1221 CARAWAY COURT

Upper Marlboro, MD, 20774
Prince Georges County

FLEX & OFFICE SPACE AVAILABLE



PROPERTY INFORMATION

- Two-building 155,444 SF
- Class A Flex Portfolio
- 17' clear ceilings
- Dock loading
- Ample Parking
- Located one mile to I-495

Immediate Proximity to:

- Largo Town Center
- UMD Capital Region Medical Center
- Prince George's County Government Offices

LEASED BY:

klnb

Kenneth Fellows
301-222-0210
kfellows@klnb.com

Robert E. Pugh
301-222-0211
rpugh@klnb.com

Keiry Martinez
703-334-5629
kmartinez@klnb.com

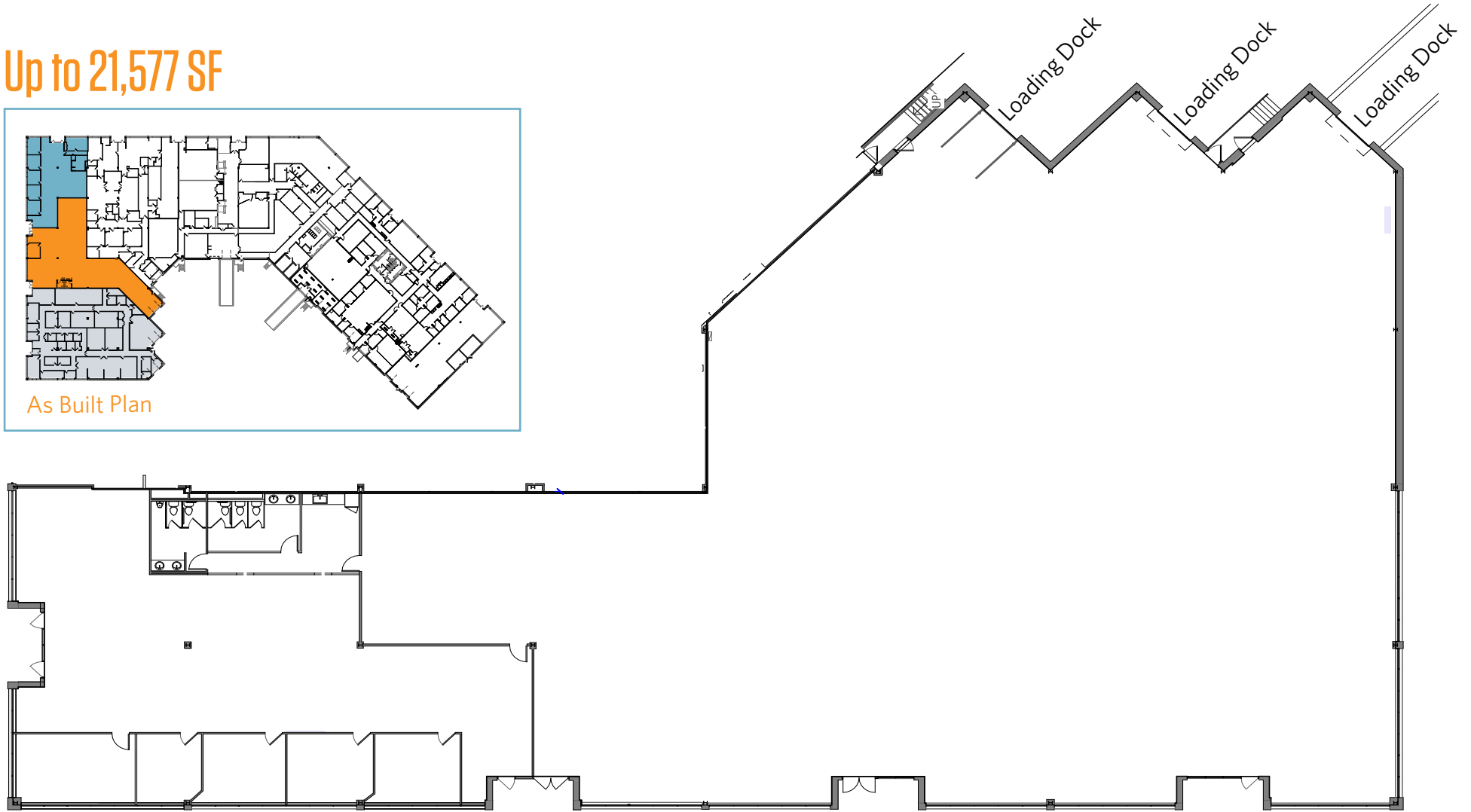
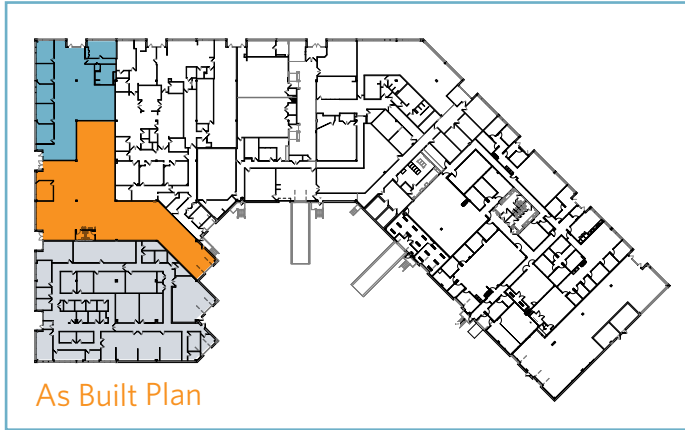
12435 Park Potomac Ave, Suite 250
Rockville, MD 20854
klnb.com

1220 & 1221 CARAWAY COURT

Upper Marlboro, MD, 20774
Prince Georges County

1220 | FLOOR PLAN

Up to 21,577 SF



Kenneth Fellows
kfellows@klnb.com
301-222-0210

Robert Pugh
rpugh@klnb.com
301-222-0211

Keiry Martinez
kmartinez@klnb.com
703-334-5629

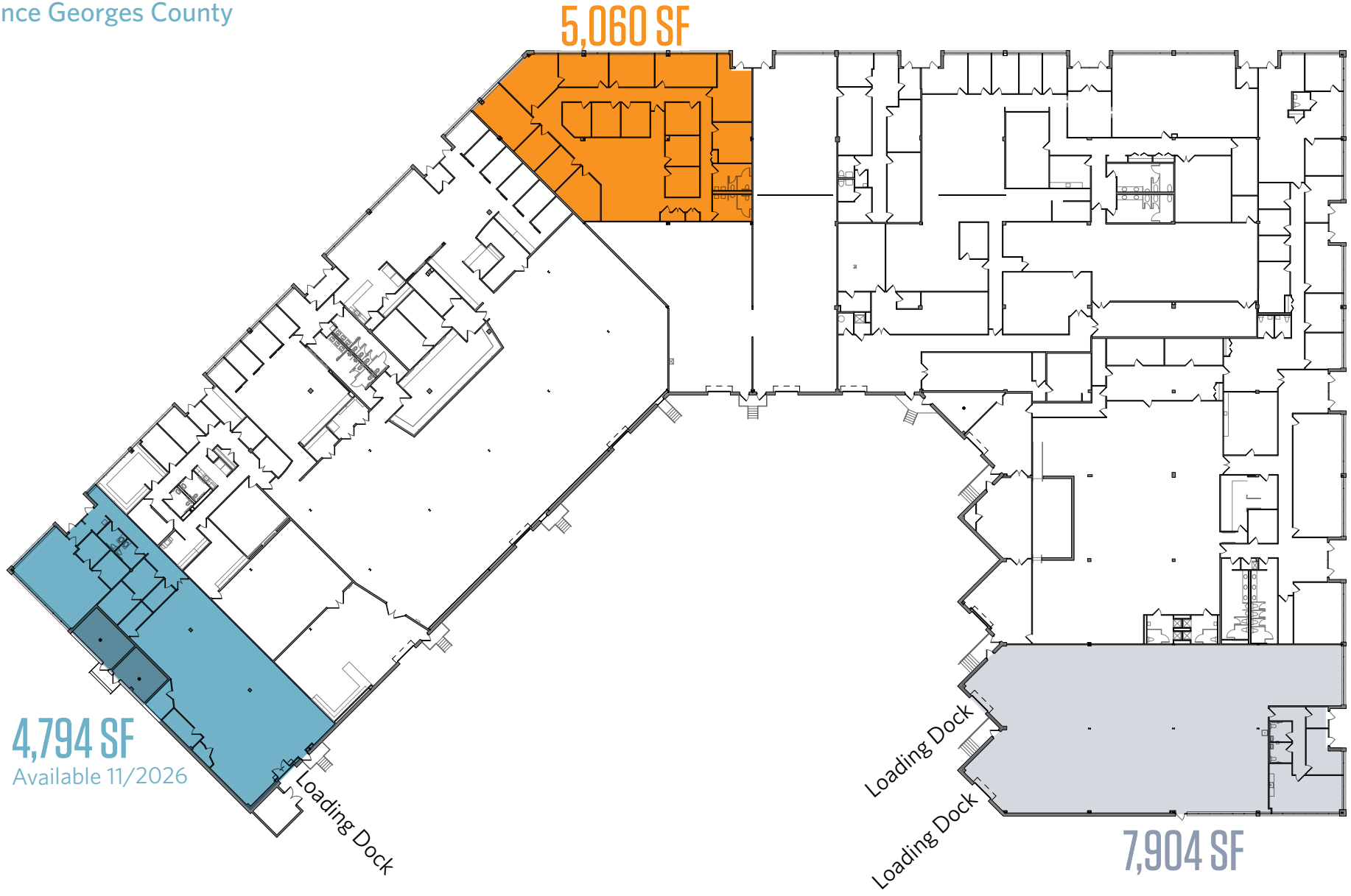
12435 Park Potomac Ave, Suite 250
Rockville MD, 20854
klnb.com



1220 & 1221 CARAWAY COURT

Upper Marlboro, MD, 20774
Prince Georges County

1221 | FLOOR PLAN



Kenneth Fellows
kfellows@klnb.com
301-222-0210

Robert Pugh
rpugh@klnb.com
301-222-0211

Keiry Martinez
kmartinez@klnb.com
703-334-5629

12435 Park Potomac Ave, Suite 250
Rockville MD, 20854
klnb.com



1220 & 1221 CARAWAY COURT

Upper Marlboro, MD, 20774
Prince Georges County

OVERVIEW



Surrounding Area:
Lottsford Rd: 0.4 Mile
Landover Rd: 0.7 Mile
Largo Town Center: 1 Mile
Route 202: 1.1 Miles
UMD Medical Center: 1.1 Miles
I- 495: 1.2 Miles
Woodmore Towne Center: 1.5 Miles

Kenneth Fellows
kfellows@klnb.com
301-222-0210

Robert Pugh
rpugh@klnb.com
301-222-0211

Keiry Martinez
kmartinez@klnb.com
703-334-5629

12435 Park Potomac Ave, Suite 250
Rockville MD, 20854
klnb.com



1220 & 1221 CARAWAY COURT

Upper Marlboro, MD, 20774
Prince Georges County

PHOTOS



Kenneth Fellows
kfellows@klnb.com
301-222-0210

Robert Pugh
rpugh@klnb.com
301-222-0211

Keiry Martinez
kmartinez@klnb.com
703-334-5629

12435 Park Potomac Ave, Suite 250
Rockville MD, 20854
klnb.com

klnb

1220 & 1221 CARAWAY COURT

Upper Marlboro, MD, 20774

Montgomery County

[CLICK TO VIEW PROPERTY WEBSITE](#)

For More Information, Please Contact:

Kenneth Fellows
kfellows@klnb.com
301-222-0210

Robert Pugh
rpugh@klnb.com
301-222-0211

Keiry Martinez
kmartinez@klnb.com
703-334-5629



While we have no reason to doubt the accuracy of any of the information supplied, we cannot, and do not, guarantee its accuracy. All information should be independently verified prior to a purchase or lease of the property. We are not responsible for errors, omissions, misuse, or misinterpretation of information contained herein and make no warranty of any kind, express or implied, with respect to the property or any other matters.

12435 Park Potomac Ave, Suite 250
Rockville MD, 20854
klnb.com

