

Full Building  
Opportunity!

3,920 SF

1,920 SF

## FOR SALE OR LEASE

### PROPERTY HIGHLIGHTS

- **Property Size:** 5,840 SF
- **Available Space:** 1,920 SF - 5,840 SF
- **Loading:** Drive-In (2)
- **Ceiling Heights:** 11' clear
- 3,000 SF fenced IOS and parking
- Portions of climate controlled warehouse
- Strategically located with access to major thoroughways Route 295, Route 50 & Route 450
- Immediate access to Washington, D.C.

### NEARBY AMENITIES



**AARON CARROLL**

acarroll@klnb.com | 202-652-2333

klnb.com

## BLADENSBURG, MD 20710 | PRINCE GEORGE'S COUNTY



acarroll@klnb.com | 202-652-2333





# PHOTOS

## 4802-4806 WEBSTER STREET

BLADENSBURG, MD 20710 | PRINCE GEORGE'S COUNTY



**AARON CARROLL**

acarroll@klnb.com | 202-652-2333

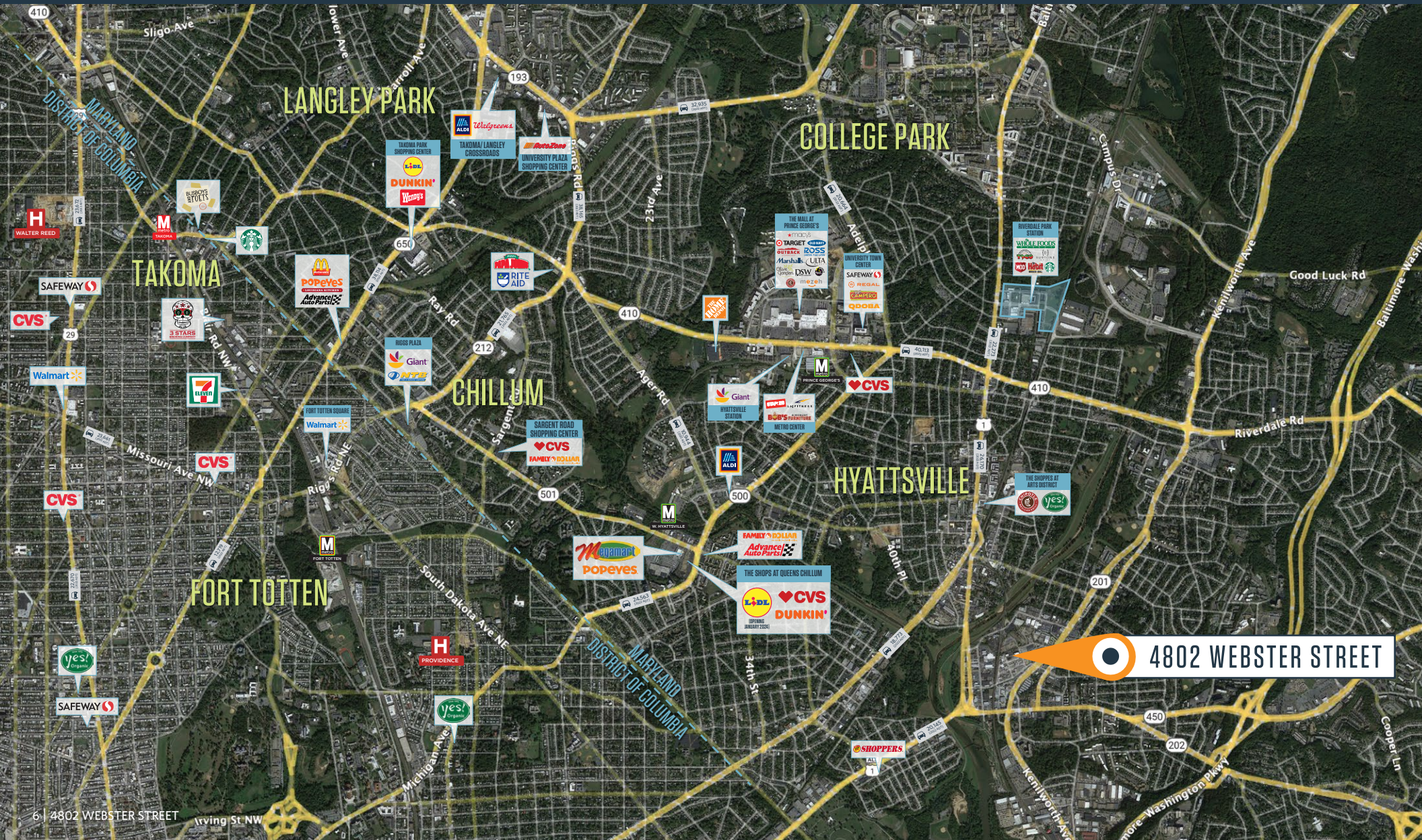
**NA**klnb



# MARKET AERIAL

## 4802-4806 WEBSTER STREET

BLADENSBURG, MD 20710 | PRINCE GEORGE'S COUNTY



AARON CARROLL

acarroll@klnb.com | 202-652-2333

NAklnb





# 4802-4806 WEBSTER STREET

BLADENSBURG, MD 20710 | PRINCE GEORGE'S COUNTY

**FOR MORE INFORMATION, PLEASE CONTACT:**

**AARON CARROLL**

acarroll@klnb.com

202-652-2333

9881 Broken Land Parkway, Suite 300, Columbia, MD 21046

.....

**klnb.com**



instagram.com/klnbcre



linkedin.com/company/klnb



facebook.com/KLNBCRE

**CLICK TO VIEW PROPERTY WEBSITE**

While we have no reason to doubt the accuracy of any of the information supplied, we cannot, and do not, guarantee its accuracy. All information should be independently verified prior to a purchase or lease of the property. We are not responsible for errors, omissions, misuse, or misinterpretation of information contained herein and make no warranty of any kind, express or implied, with respect to the property or any other matters.