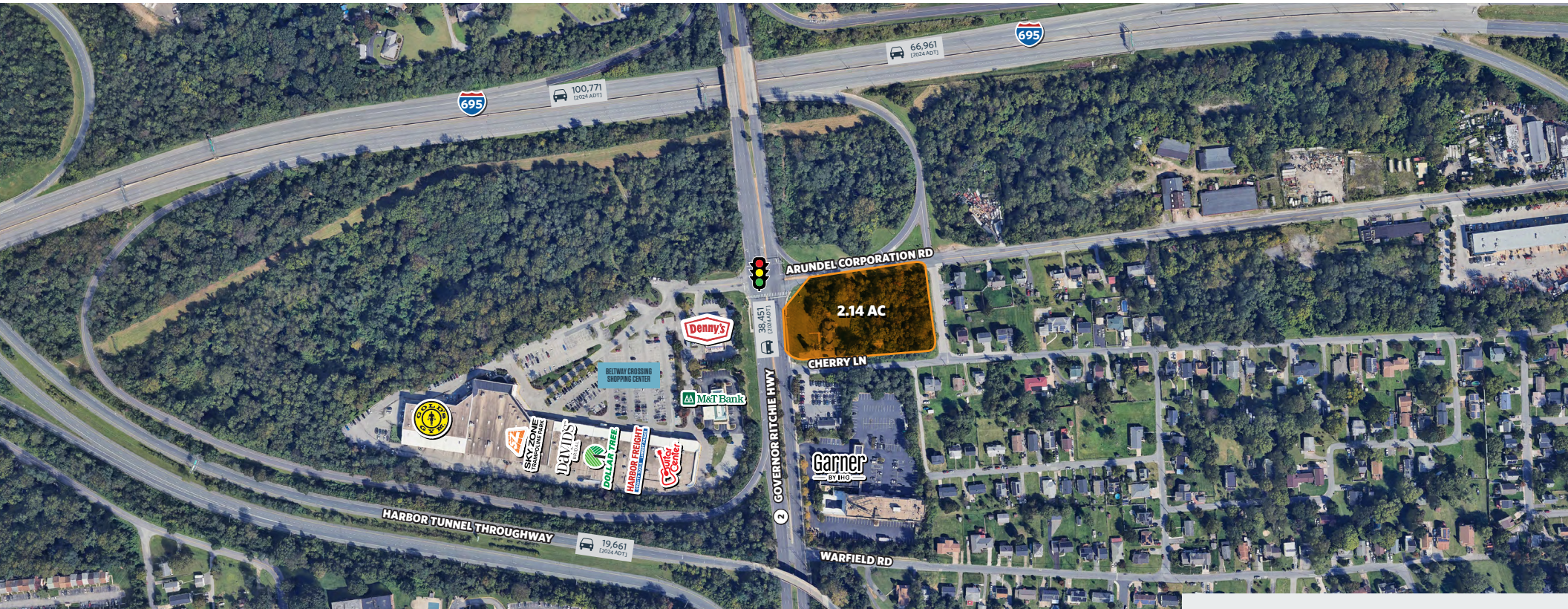


THE CORNER AT GLEN BURNIE

NE Corner of Governor Ritchie Hwy (Rt 2) and Cherry Ln
Glen Burnie, MD 21061, Anne Arundel County



NEARBY RETAILERS



RETAIL FOR LEASE

- Prime hard corner traffic controlled intersection consisting of 2.14 acres available for redevelopment
- Exceptional access from Governor Ritchie Highway, Arundel Corporation Road, Cherry Lane and Sterling Avenue
- Located just south of the Ritchie Highway interchange of I-695
- Direct visibility to Ritchie Highway with over 38,000 cars per day
- Zoned C4-C3 which allows many vehicular uses by right

LEASED BY:

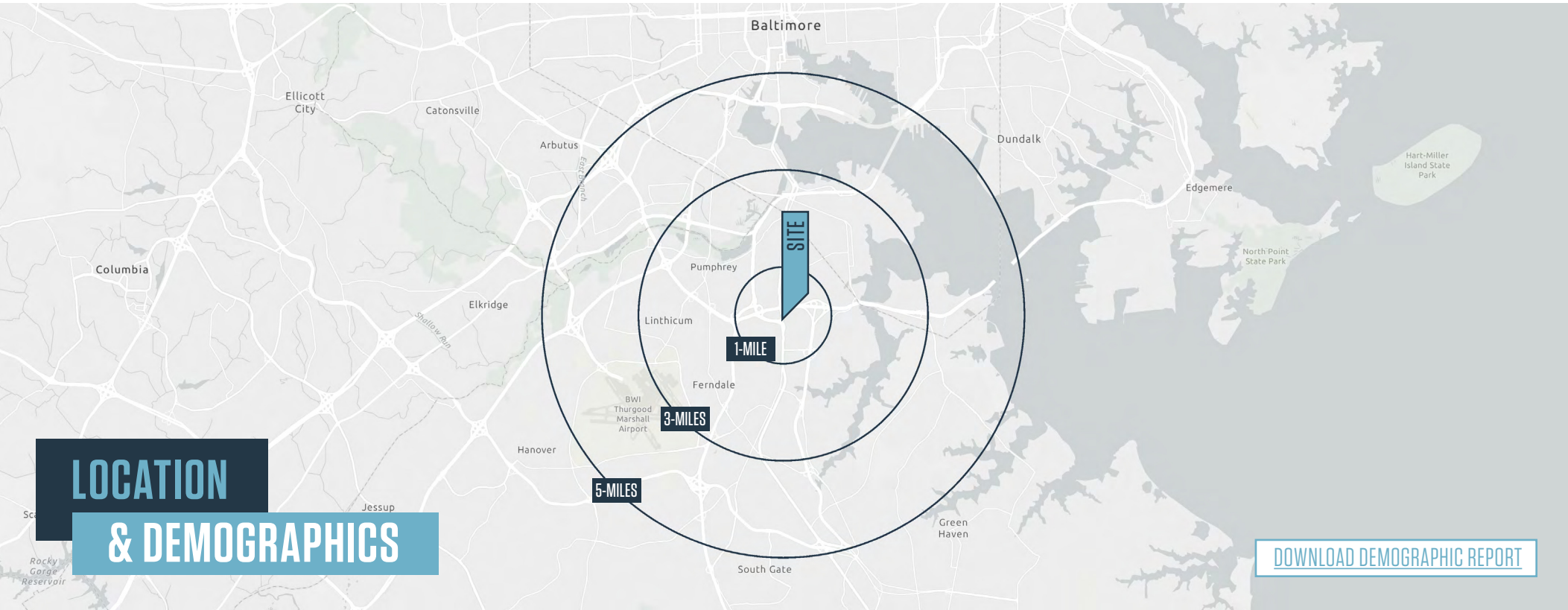
klnb

Dimitri Georgelakos
dimitri@klnb.com
703-268-2710

8065 Leesburg Pike, Suite 700, Tysons, VA 22182
klnb.com

THE CORNER AT GLEN BURNIE

NE Corner of Governor Ritchie Hwy (Rt 2) and Cherry Ln
Glen Burnie, MD 21061, Anne Arundel County



TRAFFIC COUNTS | 2024

| | |
|------------------------------|-------------|
| I-695 | 100,771 ADT |
| Governor Ritchie Hwy [Rt. 2] | 38,451 ADT |

| | 1-MILE | 3-MILES | 5-MILES | | 1-MILE | 3-MILES | 5-MILES |
|--|------------------------------|---------|---------|--|--------------------------------------|----------|-----------|
| | Population 13,347 | 81,511 | 184,164 | | Households 5,358 | 30,307 | 71,831 |
| | Daytime Population 13,053 | 79,992 | 204,430 | | Average Household Income \$94,577 | \$98,354 | \$108,101 |

THE CORNER AT GLEN BURNIE

NE Corner of Governor Ritchie Hwy (Rt 2) and Cherry Ln
Glen Burnie, MD 21061, Anne Arundel County

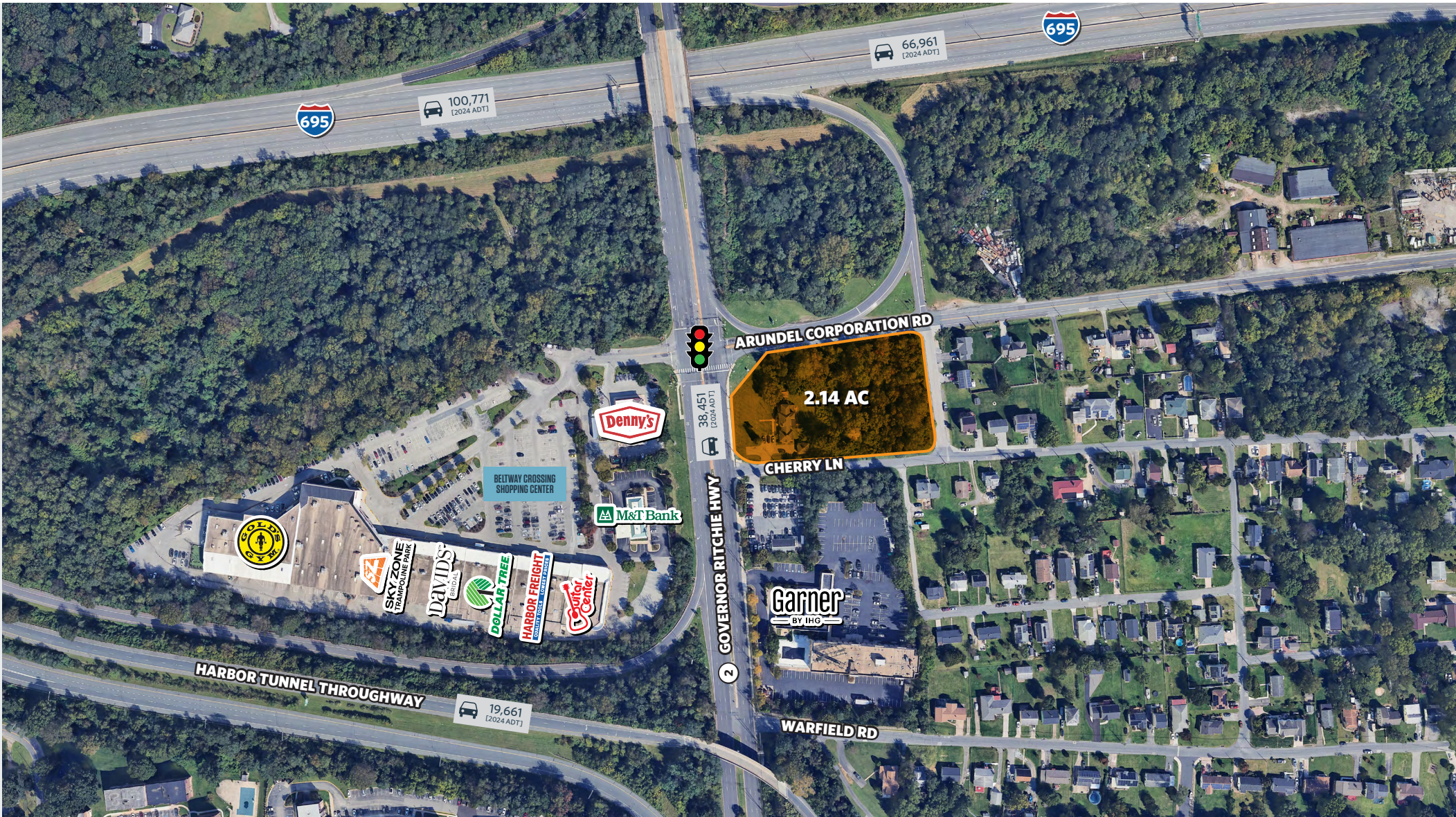
MARKET AERIAL



THE CORNER AT GLEN BURNIE

NE Corner of Governor Ritchie Hwy (Rt 2) and Cherry Ln
Glen Burnie, MD 21061, Anne Arundel County

CLOSE-UP AERIAL



Dimitri Georgelakos
dimitri@klnb.com
703-268-2710

8065 Leesburg Pike, Suite 700
Tysons, VA 22182
klnb.com

klnb

THE CORNER AT GLEN BURNIE

NE Corner of Governor Ritchie Hwy & Cherry Ln, Glen Burnie, MD 21061

Prince George's County

[CLICK TO VIEW PROPERTY WEBSITE](#)

For More Information, Please Contact:

Dimitri Georgelakos
dimitri@klnb.com
703-268-2710



While we have no reason to doubt the accuracy of any of the information supplied, we cannot, and do not, guarantee its accuracy. All information should be independently verified prior to a purchase or lease of the property. We are not responsible for errors, omissions, misuse, or misinterpretation of information contained herein and make no warranty of any kind, express or implied, with respect to the property or any other matters.

8065 Leesburg Pike, Suite 700
Tysons, VA 22182
klnb.com

