

8804 PULASKI HIGHWAY

Baltimore, MD 21237
Baltimore County



JOIN

PAD SITE FOR LEASE

- Future pad site next to Ollie's at the signalized intersection of Pulaski Highway (46,543 ADT), and Rossville Blvd. (19,060 ADT).
- Zoning: BR-AS
- Located in the Golden Ring sub-market within close proximity to the I-695 / Rt. 40 (Pulaski Highway) interchange.
- High barriers of entry with extremely limited pad site opportunities historically.

OLLIE'S
GOOD STUFF CHEAP

Wawa



DUNKIN'
Checkers



ASHLEY

LEASED BY:

klnb

Ryan Minnehan
rminnehan@klnb.com
443-632-2088

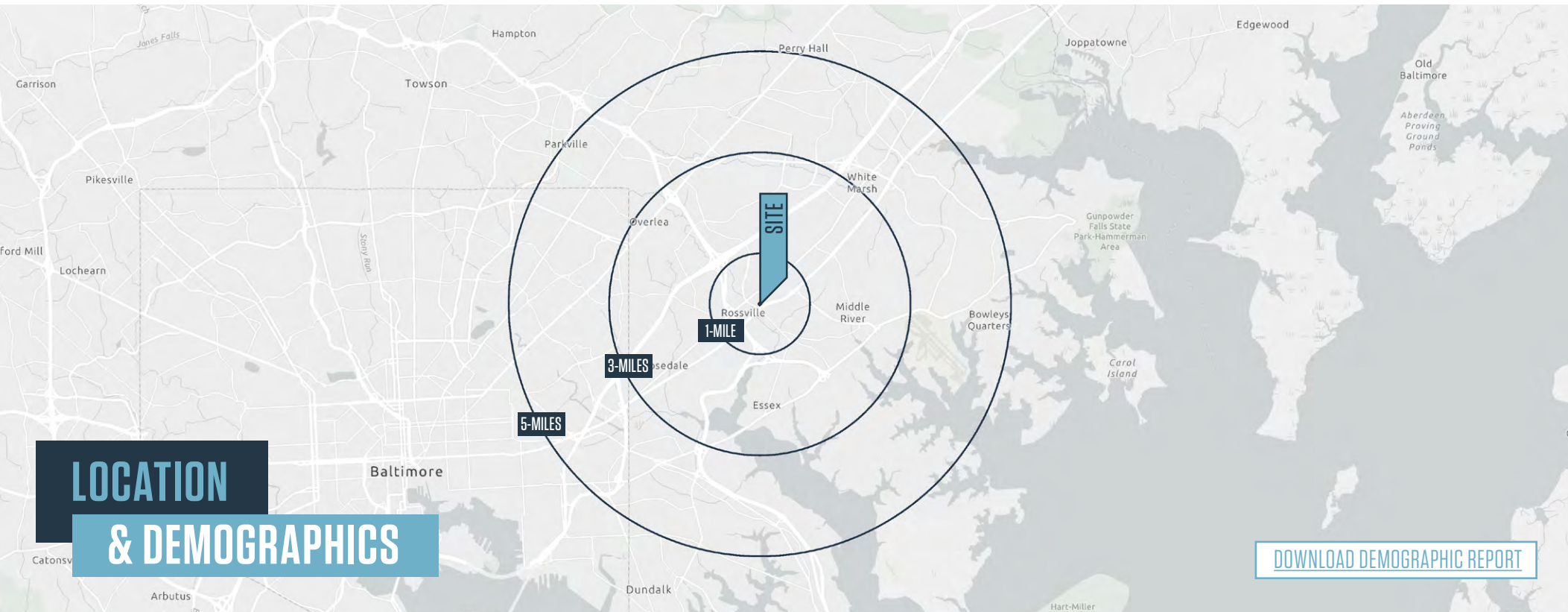
Matt Copeland
mcopeland@klnb.com
443-632-2051

100 West Road, Suite 505, Towson, MD 21204
klnb.com

8804 PULASKI HIGHWAY

Baltimore, MD 21237

Baltimore County



TRAFFIC COUNTS | 2024

Pulaski Hwy	46,543 ADT
Rossville Blvd	19,060 ADT

	1-MILE	3-MILES	5-MILES				
	Population 7,735	104,897	302,357		Households 3,074	40,917	120,771
	Daytime Population 16,799	96,969	254,468		Average Household Income \$87,445	\$98,253	\$98,312

Ryan Minnehan
rminnehan@klnb.com
443-632-2088

Matt Copeland
mcpeland@klnb.com
443-632-2051

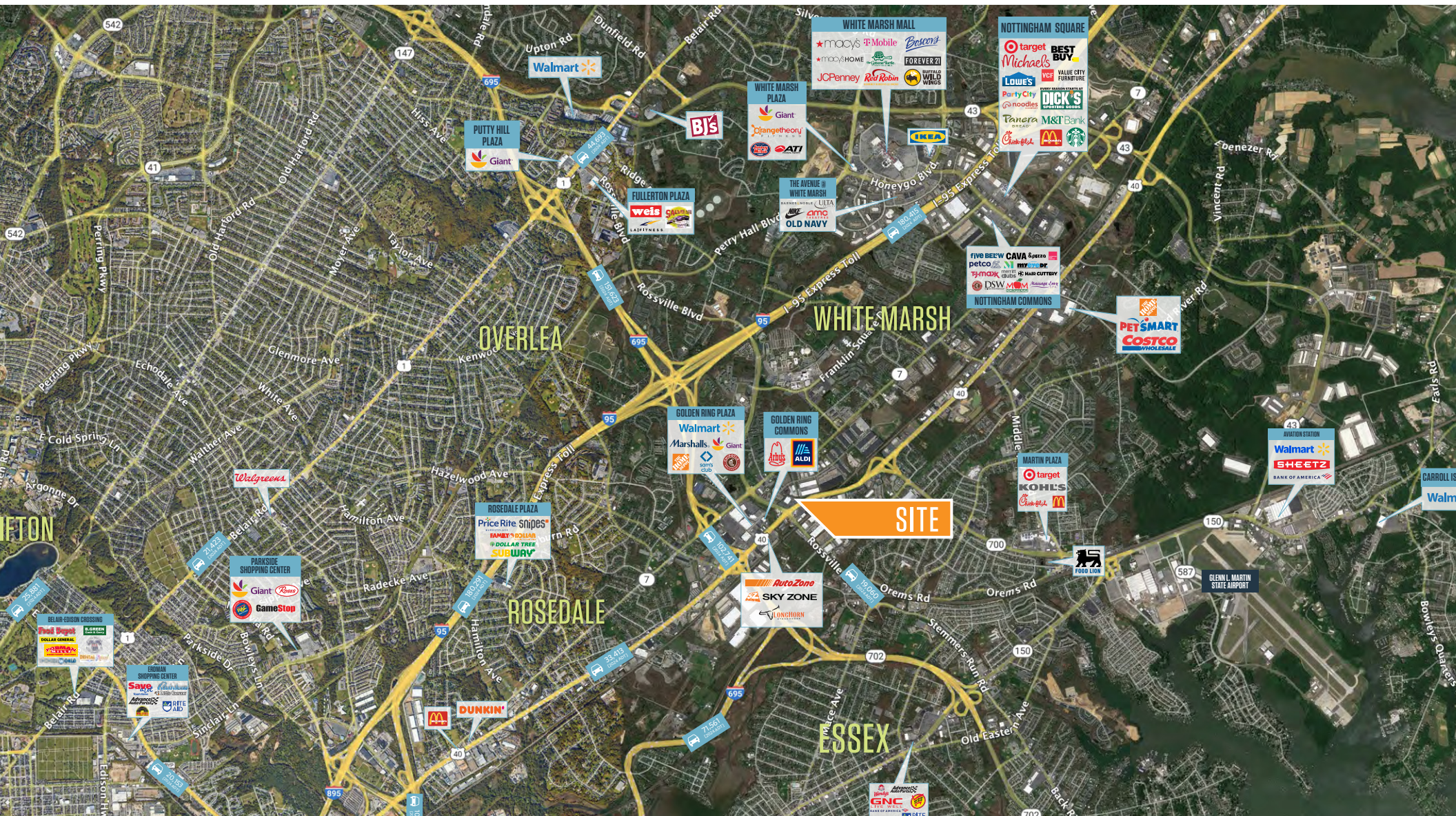
100 West Road, Suite 505
Towson, MD 21204
[klnb.com](#)

klnb

8804 PULASKI HIGHWAY

Baltimore, MD 21237
Baltimore County

MARKET AERIAL



Ryan Minnehan
rminnehan@klnb.com
443-632-2088

Matt Copeland
mcpeland@klnb.com
443-632-2051

100 West Road, Suite 505
Towson, MD 21204
klnb.com

klnb

8804 PULASKI HIGHWAY

Baltimore, MD 21237
Baltimore County

MID-VIEW AERIAL



Ryan Minnehan
rminnehan@klnb.com
443-632-2088

Matt Copeland
mcpeland@klnb.com
443-632-2051

100 West Road, Suite 505
Towson, MD 21204
klnb.com

klnb

8804 PULASKI HIGHWAY

Baltimore, MD 21237
Baltimore County

CLOSE-UP AERIAL



Ryan Minnehan
rminnehan@klnb.com
443-632-2088

Matt Copeland
mcopeland@klnb.com
443-632-2051

100 West Road, Suite 505
Towson, MD 21204
klnb.com

klnb

8804 PULASKI HIGHWAY

Baltimore, MD 21237

Baltimore County

[CLICK TO VIEW PROPERTY WEBSITE](#)

For More Information, Please Contact:

Ryan Minnehan
rminnehan@klnb.com
443-632-2088

Matt Copeland
mcpeland@klnb.com
443-632-2051



While we have no reason to doubt the accuracy of any of the information supplied, we cannot, and do not, guarantee its accuracy. All information should be independently verified prior to a purchase or lease of the property. We are not responsible for errors, omissions, misuse, or misinterpretation of information contained herein and make no warranty of any kind, express or implied, with respect to the property or any other matters.

100 West Road, Suite 505
Towson, MD 21204
klnb.com

