



JOIN THESE RETAILERS



SIGNALIZED CORNER AVAILABLE FOR SALE OR LEASE

- **FOR SALE - \$2.5 Million**
- **FOR LEASE - Please contact for details**
- This site is occupied by an operating Pizza Hut restaurant (Please do not disturb Tenant) that can be made available.
- Ownership is open to a vacant sale, ground lease or lease of the existing property.
- 3,610 SF square foot freestanding existing building with strong access, visibility and existing pylon signage.
- Lot Size: 1.29-acre parcel
- Zoned: CE-CLI (Corridor Employment/Continuing Light Industrial)

MICHAEL GINSBURG

mginsburg@klnb.com | 443-632-2041

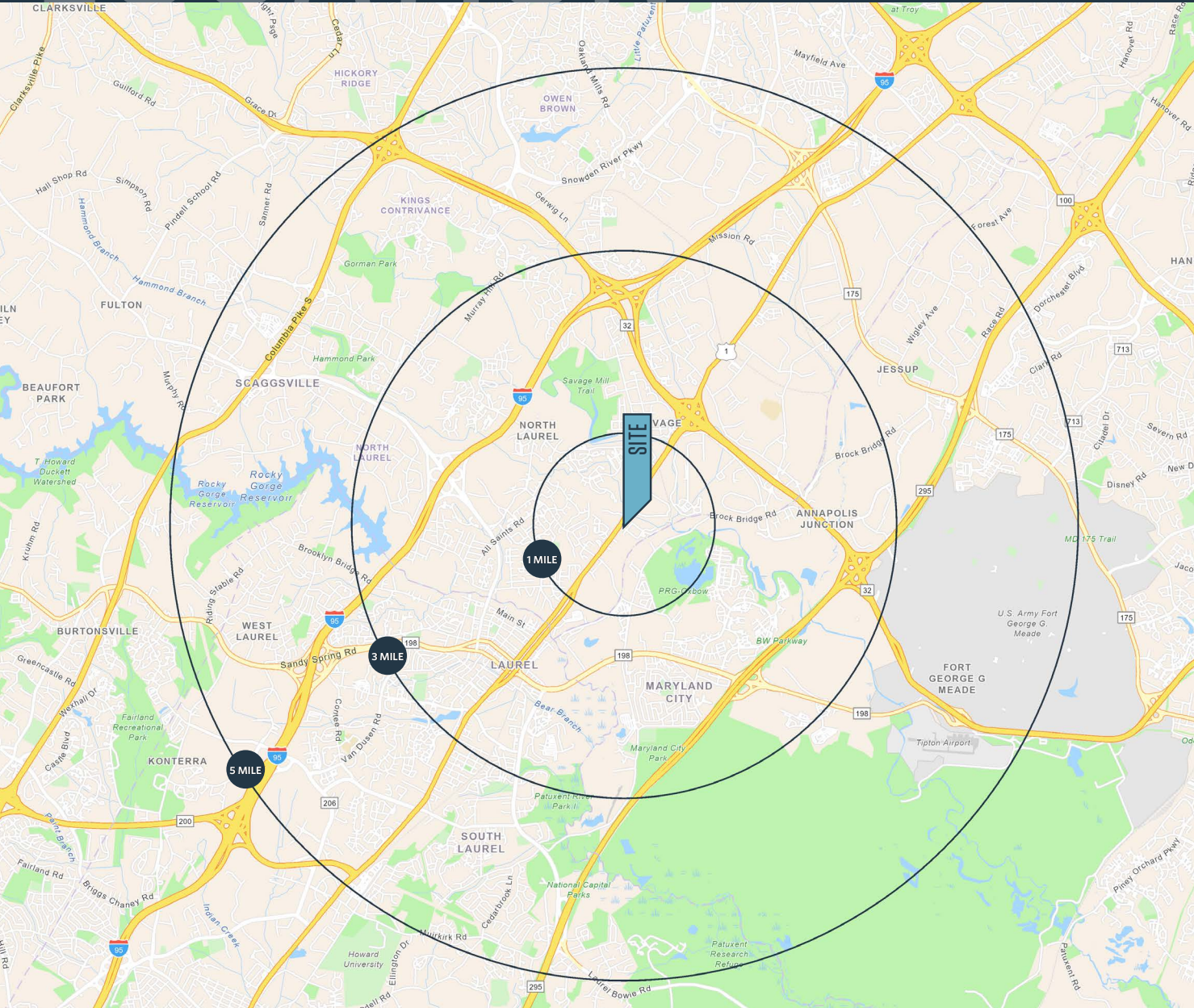
MATT SKALET

mkalet@klnb.com | 202-420-7775

LOCATION

9155 MAIER ROAD

CORNER OF WASHINGTON BLVD (RTE 1) & MAIER ROAD, LAUREL, MD 20723, HOWARD COUNTY



PROPERTY HIGHLIGHTS:

3,610 square foot existing building

DEMOGRAPHICS | 2025:

1-MILE	3-MILE	5-MILE
Population		
11,151	85,699	194,212
Daytime Population		
9,401	78,859	219,788
Households		
3,990	30,920	70,433
Average HH Income		
\$126,995	\$134,360	\$143,677

[CLICK TO DOWNLOAD DEMOGRAPHIC REPORT](#)

TRAFFIC COUNTS | 2024:

Route 1 37,341 ADT

MICHAEL GINSBURG

mginsburg@klnb.com | 443-632-2041

MATT SKALET

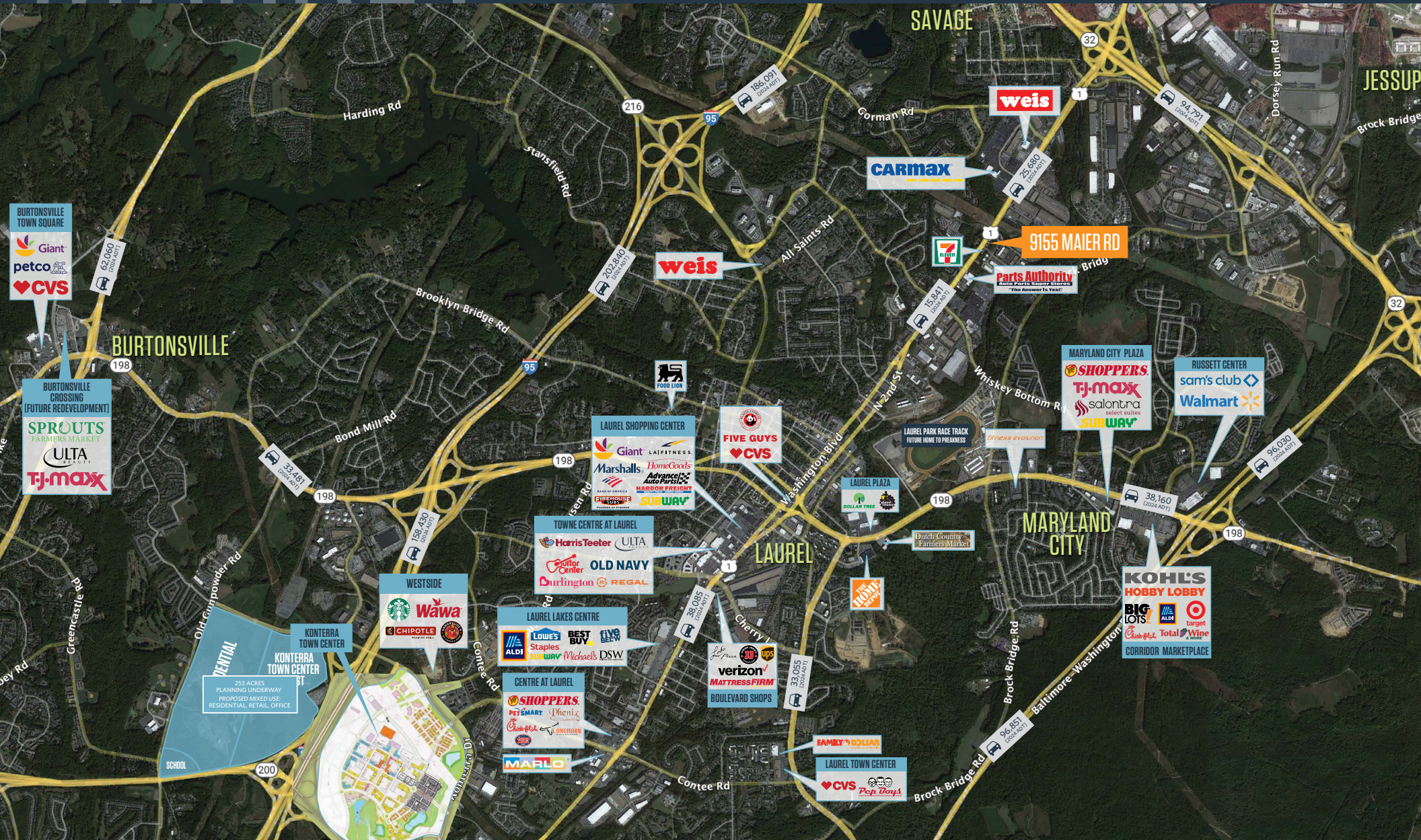
maskalet@klnb.com | 202-420-7775



MARKET

9155 MAIER ROAD

CORNER OF WASHINGTON BLVD (RTE 1) & MAIER ROAD, LAUREL, MD 20723, HOWARD COUNTY



MICHAEL GINSBURG

mginsburg@klnb.com | 443-632-2041

MATT SKALET

maskalet@klnb.com | 202-420-7775



CLOSE UP

9155 MAIER ROAD

CORNER OF WASHINGTON BLVD (RTE 1) & MAIER ROAD, LAUREL, MD 20723, HOWARD COUNTY



MICHAEL GINSBURG

mginsburg@klnb.com | 443-632-2041

MATT SKALET

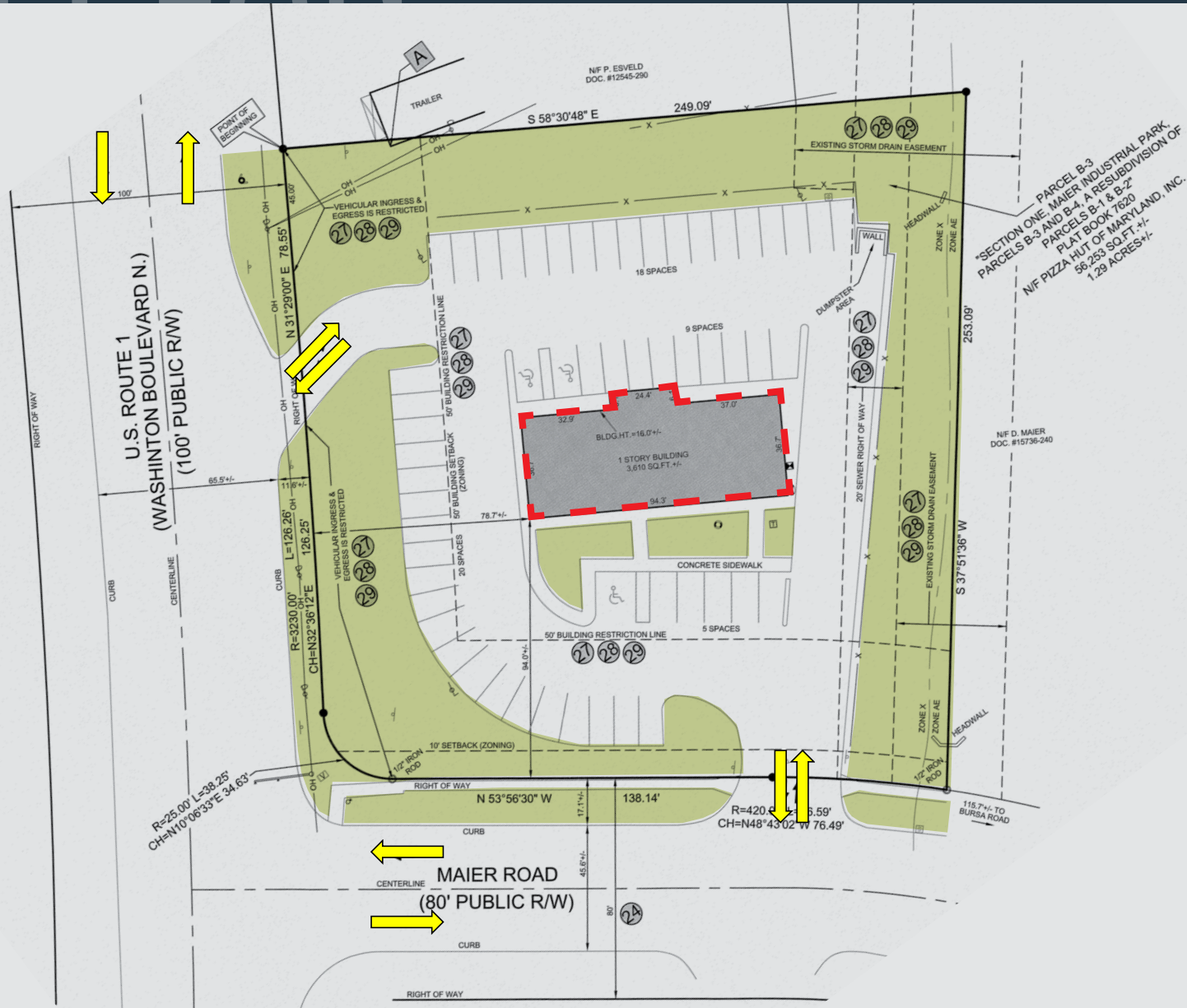
mkalet@klnb.com | 202-420-7775

klnb

SITE PLAN

9155 MAIER ROAD

CORNER OF WASHINGTON BLVD (RTE 1) & MAIER ROAD, LAUREL, MD 20723, HOWARD COUNTY



MICHAEL GINSBURG

mginsburg@klnb.com | 443-632-2041

MATT SKALET

mkalet@klnb.com | 202-420-7775





9155 MAIER ROAD

CORNER OF WASHINGTON BLVD (RTE 1) & MAIER ROAD, LAUREL, MD 20723, HOWARD COUNTY

FOR MORE INFORMATION, PLEASE CONTACT:

MICHAEL GINSBURG

mginsburg@klnb.com

410-632-2041

MATT SKALET

mkalet@klnb.com

202-420-7775

100 West Road, Suite 505, Towson, MD 21204

.....

klnb.com



[instagram.com/klnbcre](https://www.instagram.com/klnbcre)



[linkedin.com/company/klnb](https://www.linkedin.com/company/klnb)



[facebook.com/KLNBCRE](https://www.facebook.com/KLNBCRE)

[CLICK TO VIEW PROPERTY WEBSITE](#)

While we have no reason to doubt the accuracy of any of the information supplied, we cannot, and do not, guarantee its accuracy. All information should be independently verified prior to a purchase or lease of the property. We are not responsible for errors, omissions, misuse, or misinterpretation of information contained herein and make no warranty of any kind, express or implied, with respect to the property or any other matters.