

RELIGIOUS FACILITY

11310 Montgomery Road, Beltsville, MD 20705
Prince George's County

TURN-KEY BUILDING FOR SALE

PRICED TO SELL!



CLICK HERE FOR
PROPERTY TOUR

PROPERTY HIGHLIGHTS

- **For Sale:** Approximately 12,000 square foot religious facility on 1.68 acres
- **Upgrades:** Recent building upgrades include new flooring in lobby, sanctuary & fellowship hall, and new kitchen installed
- **Indoor Amenities:** Reception Area, Meeting Hall, Sanctuary, and 8 classrooms & offices
- **Outdoor Amenities:** Drive-through drop-off and secured playground area
- **Use:** Religious & Potential Day Care use Monday - Friday
- **Finishes:** All Brand New Interior Finishes throughout the building
- **Nearby Access:** Minutes from I-495 and I-95
- **List Price:** \$2,500,000

NAIklnb

Zubin David
zdavid@klnb.com
301-821-5588

9881 Broken Land Parkway, Suite 300
Columbia, MD 21046
klnb.com

RELIGIOUS FACILITY

11310 Montgomery Road, Beltsville, MD 20705
Prince George's County

AVAILABLE SPACE:

- Approx. 12,000 SF
- 1.68 Acres

LOCATION & DEMOGRAPHICS

TRAFFIC COUNTS | 2025

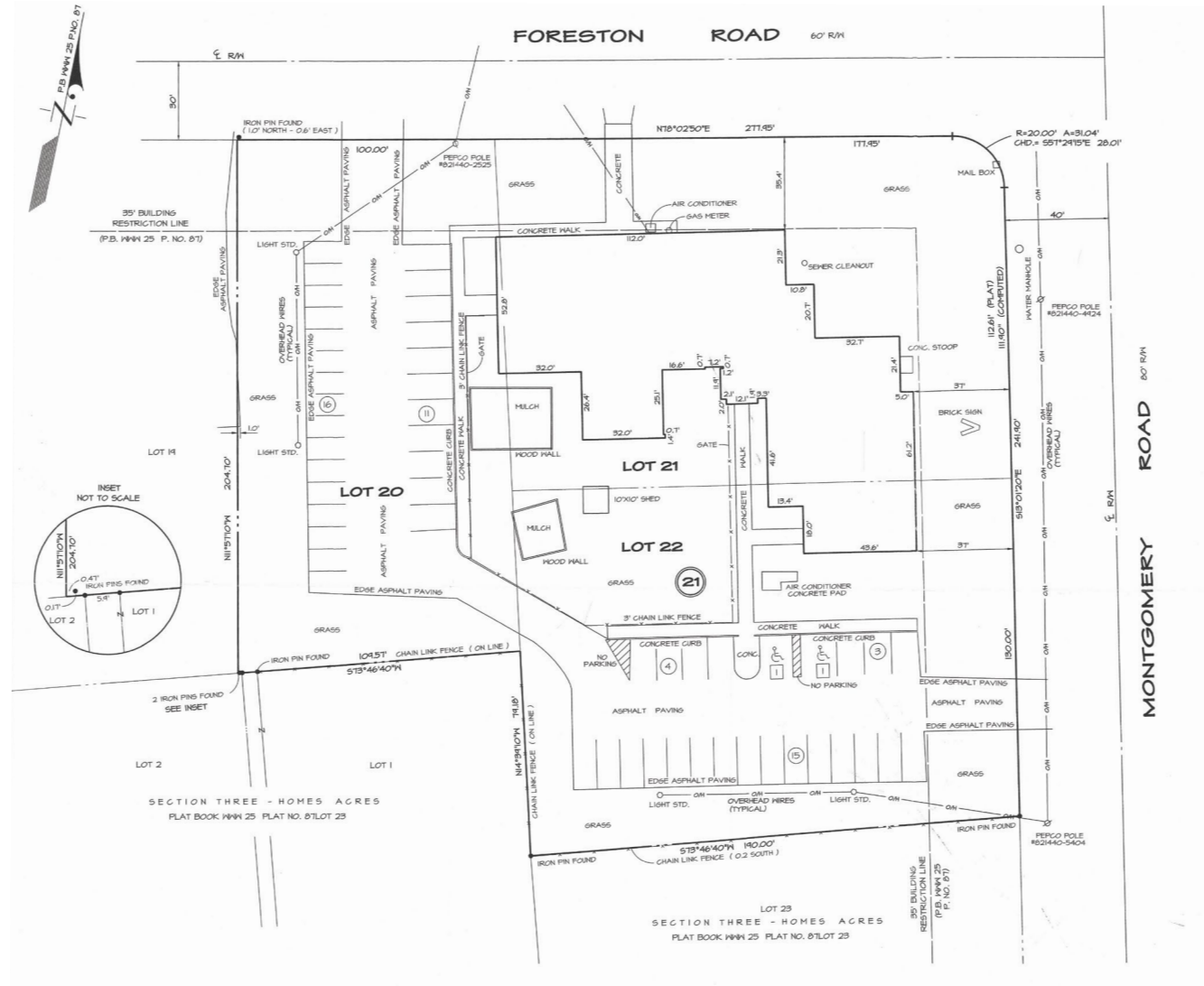
Montgomery Road	2,631 ADT
Powder Mill Road [MD-212]	33,231 ADT
I-95	181,671 ADT
Washington Boulevard (MD-1)	7,960 ADT

	1-MILE	3-MILES	5-MILES		1-MILE	3-MILES	5-MILES
	Population 12,620	80,533	299,985		Households 3,841	28,718	100,851
	Daytime Population 10,254	94,164	299,985		Average Household Income \$127,136	\$122,191	\$125,532

RELIGIOUS FACILITY

11310 Montgomery Road, Beltsville, MD 20705
Prince George's County

SITE PLAN



RELIGIOUS FACILITY

11310 Montgomery Road, Beltsville, MD 20705
Prince George's County

PHOTOS



Zubin David
zdavid@klnb.com
301-821-5588

9881 Broken Land Pkwy, Suite 300
Columbia, MD 21046
klnb.com

NAklnb

RELIGIOUS FACILITY

11310 Montgomery Road, Beltsville, MD 20705
Prince George's County

PHOTOS



Zubin David
zdavid@klnb.com
301-821-5588

9881 Broken Land Pkwy, Suite 300
Columbia, MD 21046
klnb.com

NAklnb

RELIGIOUS FACILITY

11310 Montgomery Road, Beltsville, MD 20705
Prince George's County

PHOTOS



Zubin David
zdavid@klnb.com
301-821-5588

9881 Broken Land Pkwy, Suite 300
Columbia, MD 21046
klnb.com

NAklnb

RELIGIOUS FACILITY

11310 Montgomery Road, Beltsville, MD 20705
Prince George's County

MARKET AERIAL



RELIGIOUS FACILITY

11310 Montgomery Road, Beltsville, MD 20705

Prince George's County

[CLICK TO VIEW PROPERTY WEBSITE](#)

For More Information, Please Contact:

Zubin David
zdavid@klnb.com
301-821-5588



While we have no reason to doubt the accuracy of any of the information supplied, we cannot, and do not, guarantee its accuracy. All information should be independently verified prior to a purchase or lease of the property. We are not responsible for errors, omissions, misuse, or misinterpretation of information contained herein and make no warranty of any kind, express or implied, with respect to the property or any other matters.

9881 Broken Land Pkwy, Suite 300
Columbia, MD 21046
klnb.com

