



EXISTING ATM MACHINE TO BE REMOVED. PHOTOS ABOVE ARE TO SHOW LOCATION ONLY

NEARBY RETAILERS

CAVA TRUIST 

Aroma CAFE *Anita's*

Wendy's   **Banfield**
PET HOSPITAL
Together for the life of your pet™

2ND GEN ATM SITE FOR LEASE

- Existing ATM Machine to be removed
- Strong daytime and nighttime population.
- 45 available parking spaces (8.45/1,000)
- 5,323 SF retail building in the heart of Vienna, VA
- Located on Maple Ave (29,966 ADT)

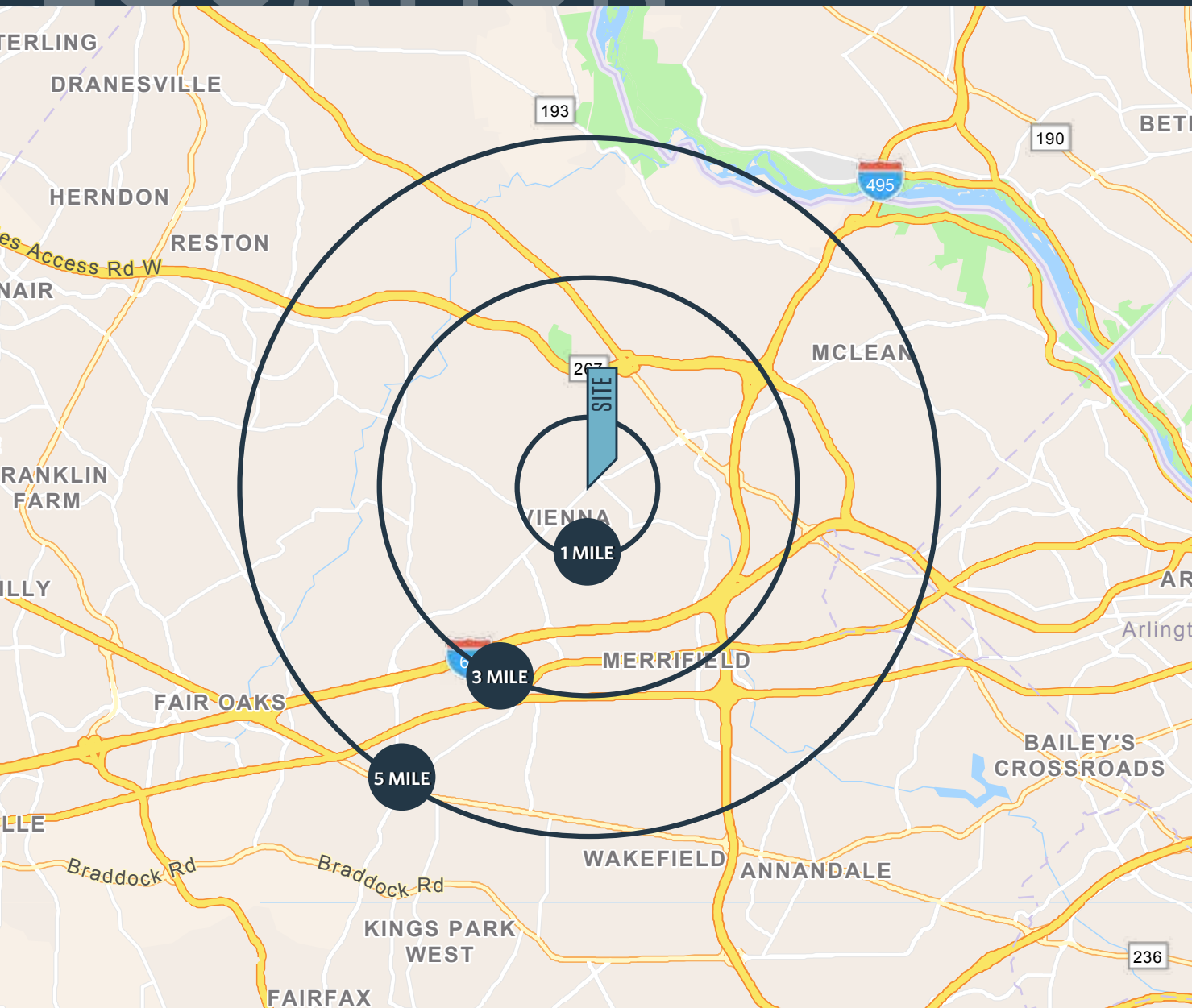
CRAIG CHENEY

ccheney@klnb.com | 703-268-2705

LOCATION

VIENNA CROSSING - ATM SITE

418 MAPLE AVE E, VIENNA, VA, FAIRFAX COUNTY



DEMOGRAPHICS | 2025:

1-MILE	3-MILE	5-MILE
Population		
10,279	101,579	240,733
Daytime Population		
18,700	204,600	379,519
Households		
3,611	47,482	102,891
Average HH Income		
\$287,491	\$227,758	\$229,486

[CLICK TO DOWNLOAD DEMOGRAPHIC REPORT](#)

TRAFFIC COUNTS | 2024:

Maple Ave E	29,966 ADT
Beulah Rd	6,254 ADT

CRAIG CHENEY

ccheney@klnb.com | 703-268-2705

klnb

VIENNA CROSSING - ATM SITE

418 MAPLE AVE E, VIENNA, VA, FAIRFAX COUNTY



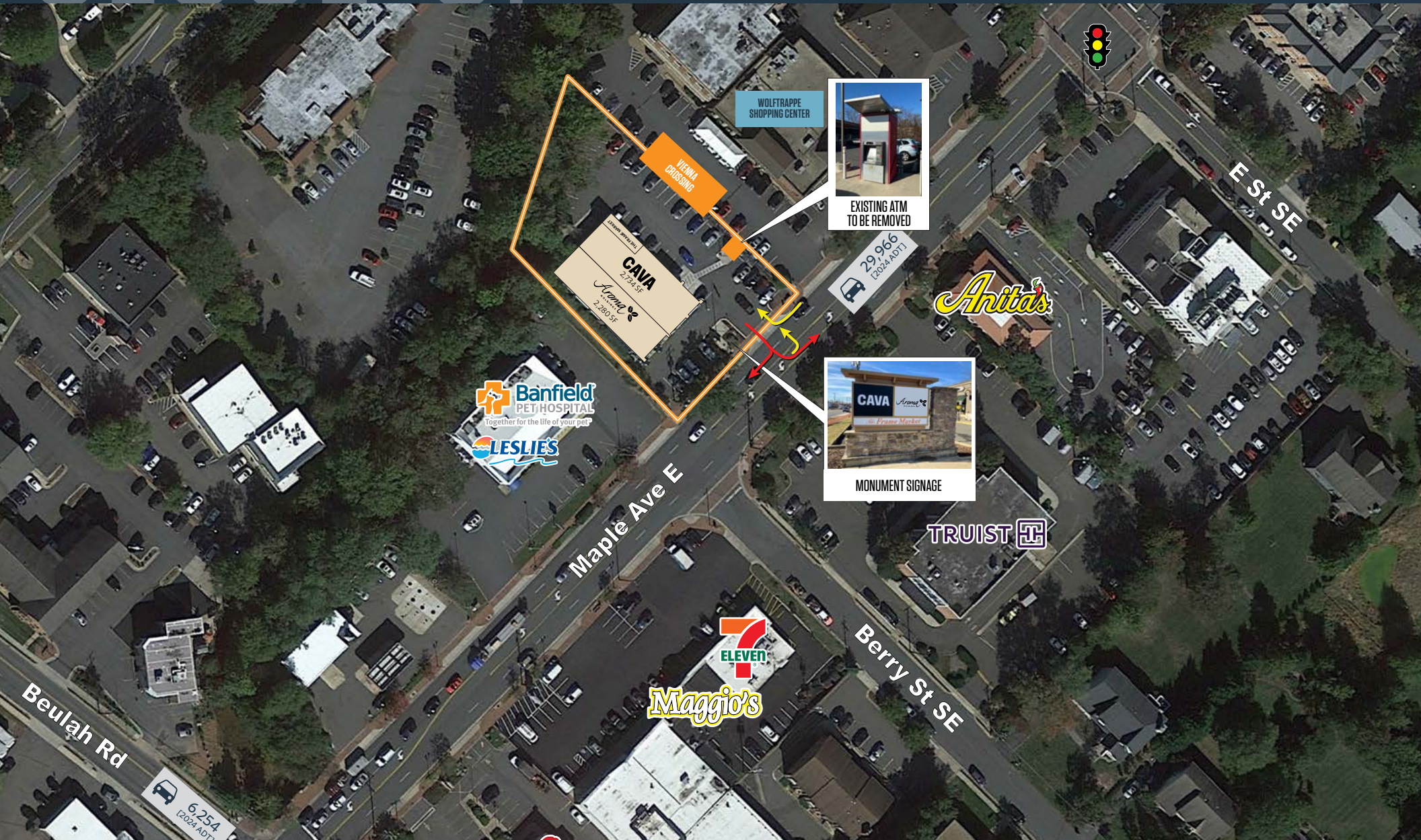
CRAIG CHENEY

ccheney@klnb.com | 703-268-2705

CLOSE-UP

VIENNA CROSSING - ATM SITE

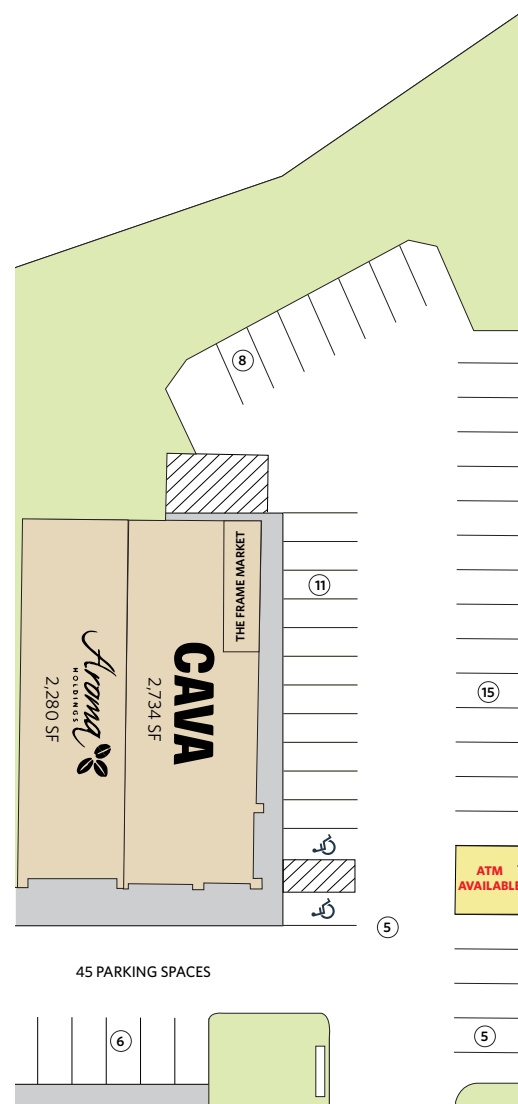
418 MAPLE AVE E, VIENNA, VA, FAIRFAX COUNTY



CRAIG CHENEY

ccheney@klnb.com | 703-268-2705

klnb



SIZE	RATE	NNN	CONDITION	AVAILABILITY
N/A	\$45,000 ANNUALLY	N/A	2ND GEN ATM SITE	3/1/2026



VIENNA CROSSING - ATM SITE

418 MAPLE AVE E, VIENNA, VA, FAIRFAX COUNTY

FOR MORE INFORMATION, PLEASE CONTACT:

CRAIG CHENEY

ccheney@klnb.com

703-268-2705

8065 Leesburg Pike, Suite 700, Tysons, VA 22182

.....

klnb.com



[instagram.com/klnbcre](https://www.instagram.com/klnbcre)



[linkedin.com/company/klnb](https://www.linkedin.com/company/klnb)



[facebook.com/KLNBCRE](https://www.facebook.com/KLNBCRE)

CLICK TO VIEW PROPERTY WEBSITE

While we have no reason to doubt the accuracy of any of the information supplied, we cannot, and do not, guarantee its accuracy. All information should be independently verified prior to a purchase or lease of the property. We are not responsible for errors, omissions, misuse, or misinterpretation of information contained herein and make no warranty of any kind, express or implied, with respect to the property or any other matters.

CRAIG CHENEY

ccheney@klnb.com | 703-268-2705