



## AVAILABILITY

- Warehousing
  - 7380 Gallerher Rd (Building B)
  - Suite 7380
    - 14,577 - 37,899 SF
    - Clear Height: 20-25 FT
    - 2,477 SF Office
    - Drive in: 2 - 20'x14'
    - Columns 24x50
    - 3 - 20'x14'
    - Docks: 4 - 12'x12'

- Outdoor Storage
    - Lot 1 - 54,895 SF
    - Lot 2 - 62,618 SF
- } \$4.00 PSF NNN

## PROPERTY HIGHLIGHTS

- Zoned M-1 - Heavy Industrial
- Great location off I-66, on the corner of Route 50 and Route 29
- Uses include but not limited to:
  - Warehousing
  - Assembly and Production
  - Distribution
  - Research and Development
  - Manufacturing

**RYAN GOELLER**  
 rgoeller@klnb.com  
 703-268-2731

**TYLER CUMBERLAND**  
 tcumberland@klnb.com  
 703-268-2720

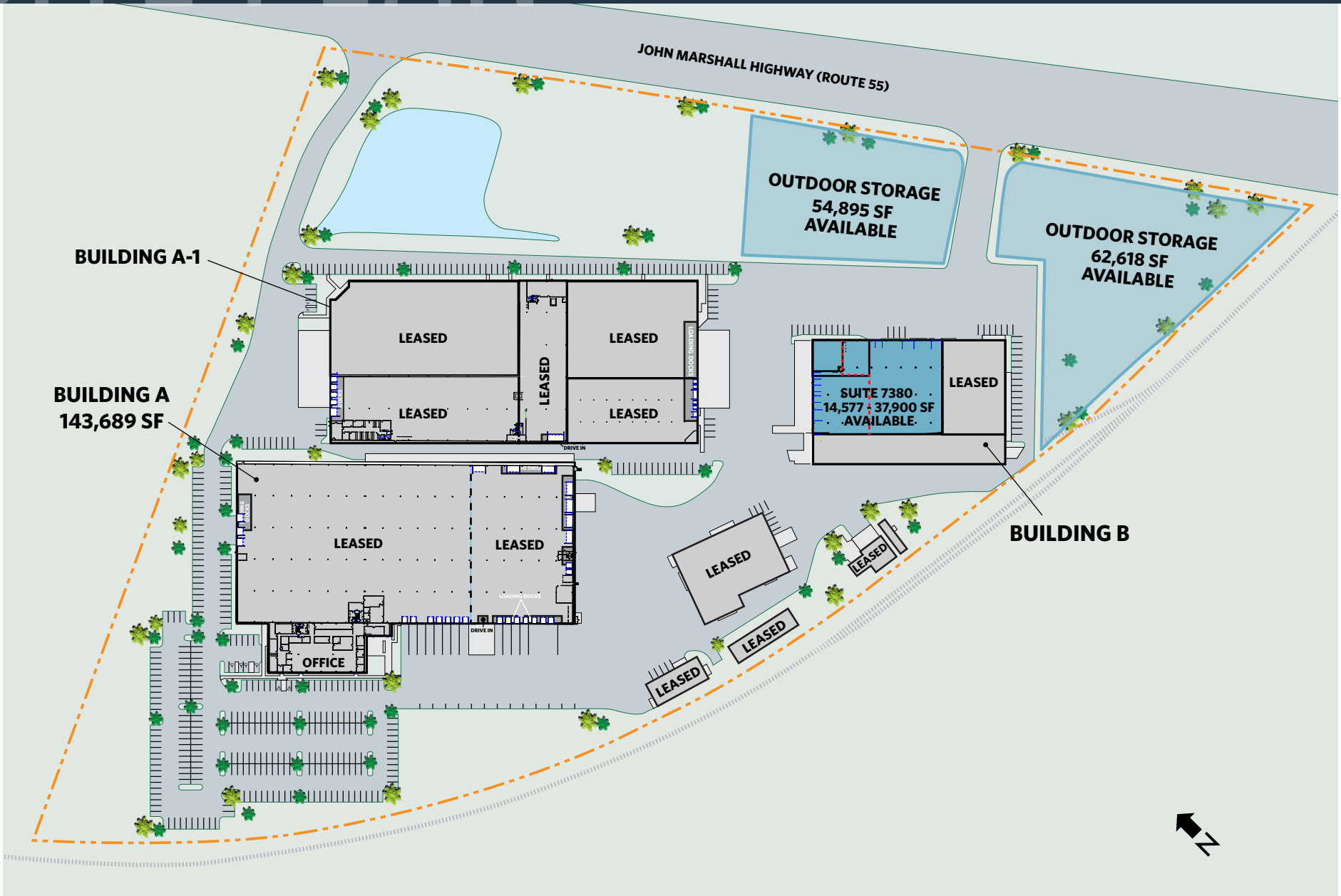
**CHASE STEWART**  
 cstewart@klnb.com  
 703-268-2732

**JEFF TARAE**  
 jtarae@klnb.com  
 703-268-2741

# SITE PLAN

# GAINESVILLE BUSINESS PARK

14235 JOHN MARSHALL HWY, GAINESVILLE, VA 20155, PRINCE WILLIAM COUNTY



**RYAN GOELLER**  
rgoeller@klnb.com  
703-268-2731

**TYLER CUMBERLAND**  
tcumberland@klnb.com  
703-268-2720

**CHASE STEWART**  
cstewart@klnb.com  
703-268-2732

**JEFF TARAE**  
jtarae@klnb.com  
703-268-2741

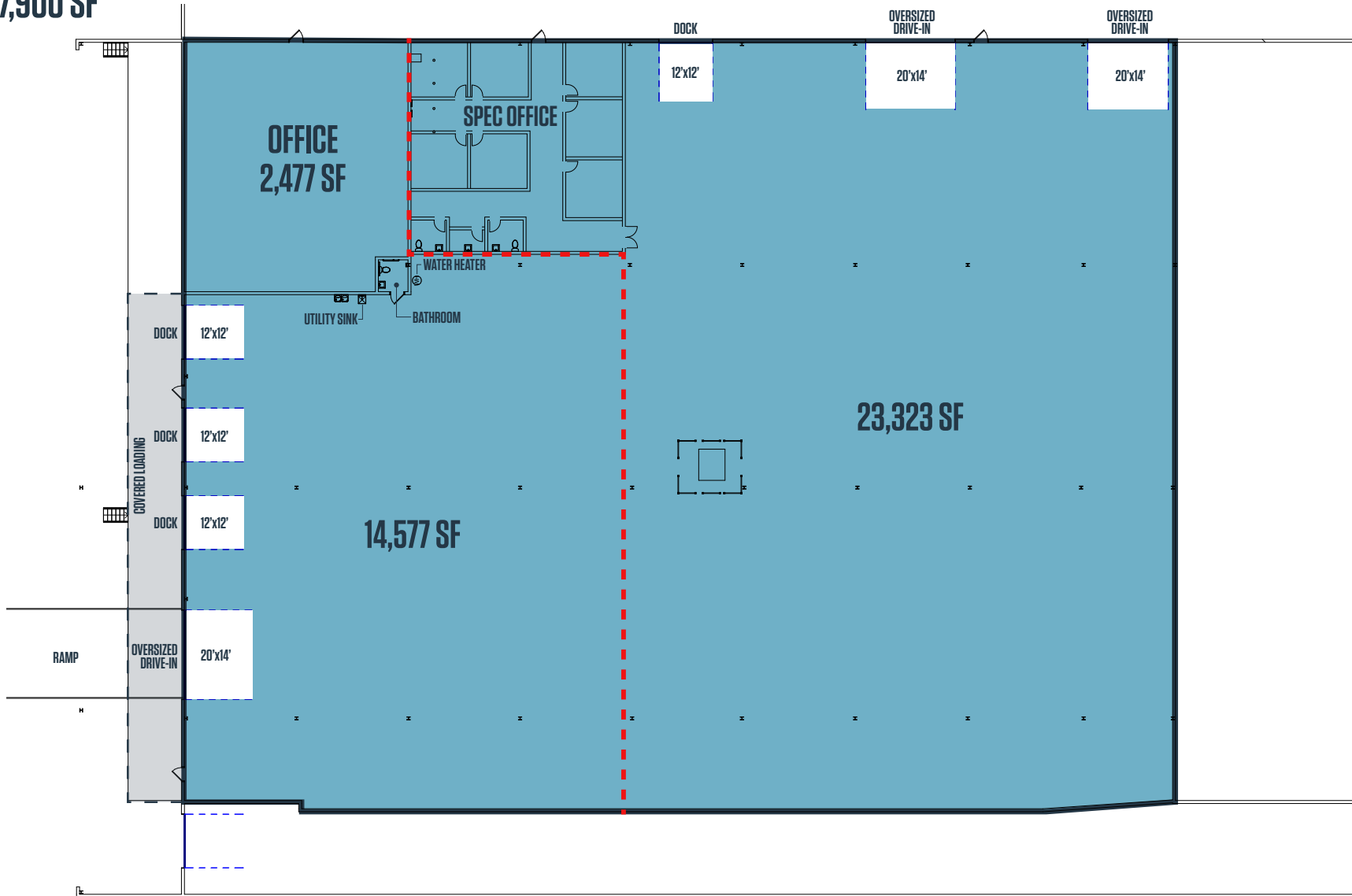


# SITE PLAN

# GAINESVILLE BUSINESS PARK

14235 JOHN MARSHALL HWY, GAINESVILLE, VA 20155, PRINCE WILLIAM COUNTY

## BUILDING B - SUITE 7380 14,577 - 37,900 SF



**RYAN GOELLER**  
rgoeller@klnb.com  
703-268-2731

**TYLER CUMBERLAND**  
tcumberland@klnb.com  
703-268-2720

**CHASE STEWART**  
cstewart@klnb.com  
703-268-2732

**JEFF TARAE**  
jtarae@klnb.com  
703-268-2741





# SITE PLAN

# GAINESVILLE BUSINESS PARK

14235 JOHN MARSHALL HWY, GAINESVILLE, VA 20155, PRINCE WILLIAM COUNTY

1

**OUTDOOR STORAGE**  
**54,895 SF**



2

**OUTDOOR STORAGE**  
**62,618 SF**



**RYAN GOELLER**  
rgoeller@klnb.com  
703-268-2731

**TYLER CUMBERLAND**  
tcumberland@klnb.com  
703-268-2720

**CHASE STEWART**  
cstewart@klnb.com  
703-268-2732

**JEFF TARAE**  
jtarae@klnb.com  
703-268-2741

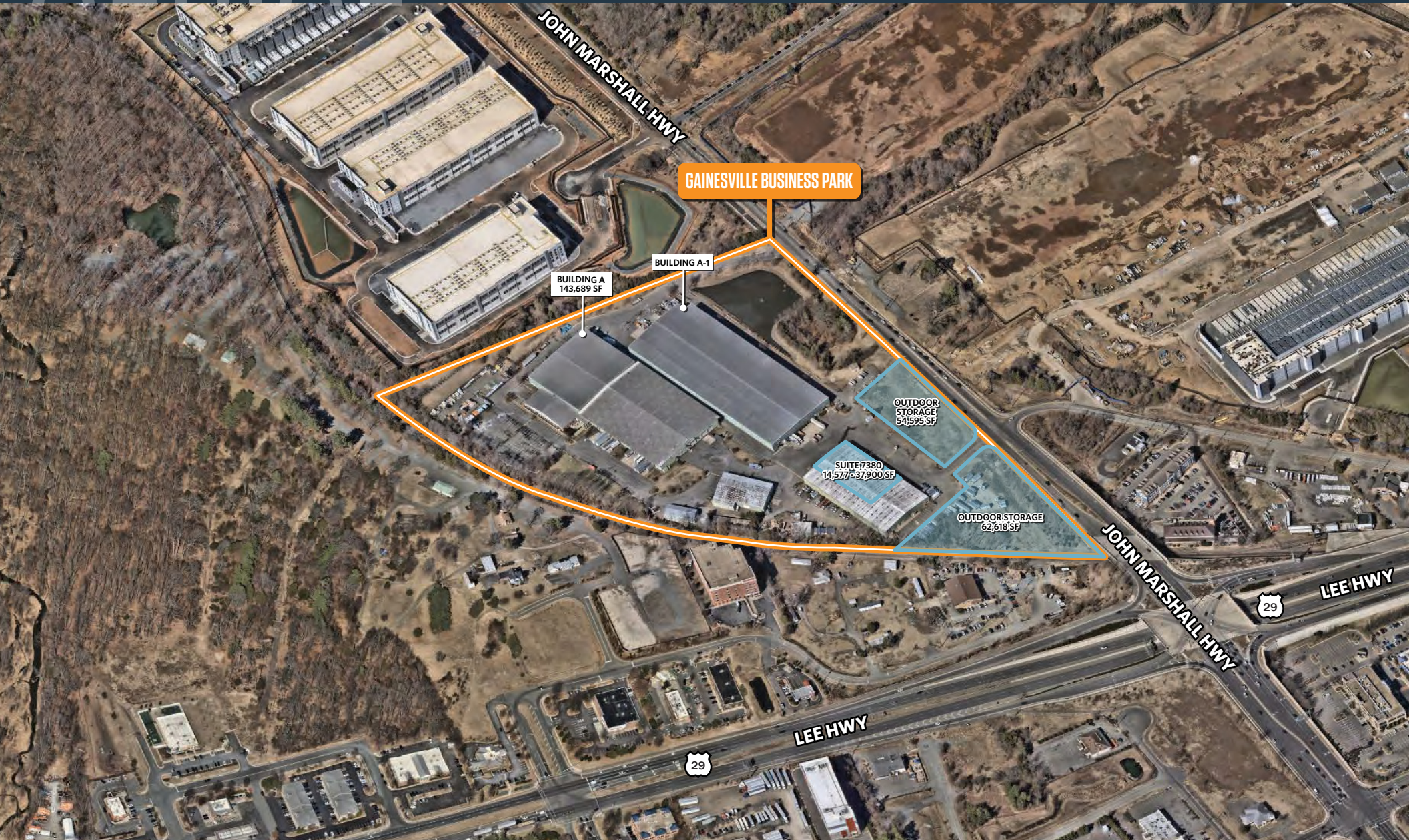




# AERIAL

# GAINESVILLE BUSINESS PARK

14235 JOHN MARSHALL HWY, GAINESVILLE, VA 20155, PRINCE WILLIAM COUNTY



**RYAN GOELLER**

rgoeller@klnb.com  
703-268-2731

**TYLER CUMBERLAND**

tcumberland@klnb.com  
703-268-2720

**CHASE STEWART**

cstewart@klnb.com  
703-268-2732

**JEFF TARAE**

jtarae@klnb.com  
703-268-2741





## FOR MORE INFORMATION, PLEASE CONTACT:

**RYAN GOELLER**

rgoeller@klnb.com  
703-268-2731

**TYLER CUMBERLAND**

tcumberland@klnb.com  
703-268-2720

**CHASE STEWART**

cstewart@klnb.com  
703-268-2732

**JEFF TARAE**

jtarae@klnb.com  
703-268-2741

8065 Leesburg Pike, Suite 700, Tysons, VA 22182

.....  
**klnb.com**



[instagram.com/klnbcre](https://www.instagram.com/klnbcre)



[linkedin.com/company/klnb](https://www.linkedin.com/company/klnb)



[facebook.com/KLNBCRE](https://www.facebook.com/KLNBCRE)

**CLICK TO VIEW PROPERTY WEBSITE**