



AVAILABILITY

- Warehousing
 - 7380 Gallerher Rd (Building B)
 - Suite 7380
 - 14,577 - 37,899 SF
 - Clear Height: 20-25 FT
 - 2,477 SF Office
 - Drive in: 2 - 20'x14'
 - Columns 24x50
 - 3 - 20'x14'
 - Docks: 4 - 12'x12'

- Outdoor Storage
 - Lot 1 - 54,895 SF
 - Lot 2 - 62,618 SF
- } \$4.00 PSF NNN

PROPERTY HIGHLIGHTS

- Zoned M-1 - Heavy Industrial
- Great location off I-66, on the corner of Route 50 and Route 29
- Uses include but not limited to:
 - Warehousing
 - Assembly and Production
 - Distribution
 - Research and Development
 - Manufacturing

RYAN GOELLER
 rgoeller@klnb.com
 703-268-2731

TYLER CUMBERLAND
 tcumberland@klnb.com
 703-268-2720

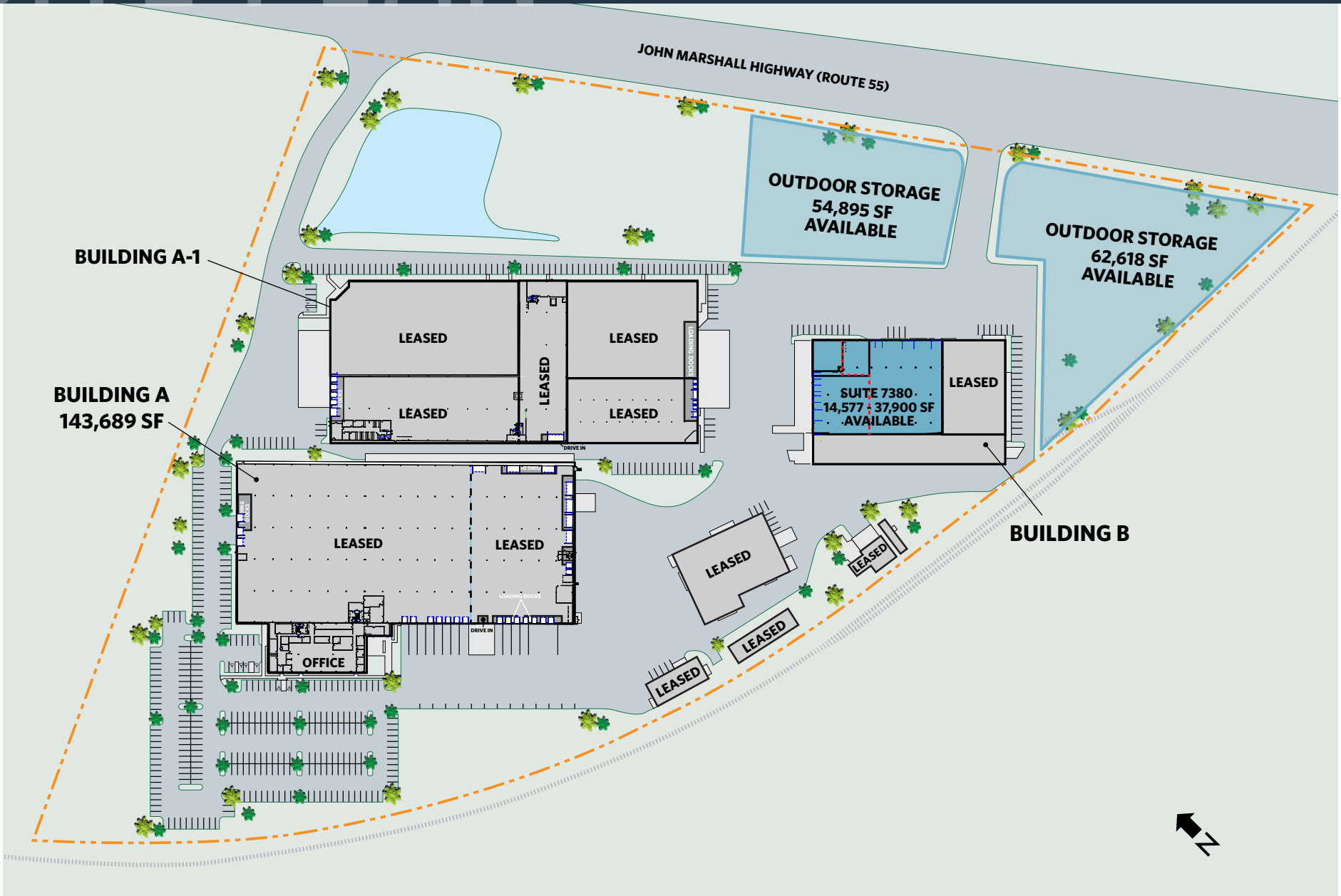
CHASE STEWART
 cstewart@klnb.com
 703-268-2732

JEFF TARAE
 jtarae@klnb.com
 703-268-2741

SITE PLAN

GAINESVILLE BUSINESS PARK

14235 JOHN MARSHALL HWY, GAINESVILLE, VA 20155, PRINCE WILLIAM COUNTY



RYAN GOELLER
rgoeller@klnb.com
703-268-2731

TYLER CUMBERLAND
tcumberland@klnb.com
703-268-2720

CHASE STEWART
cstewart@klnb.com
703-268-2732

JEFF TARAE
jtarae@klnb.com
703-268-2741

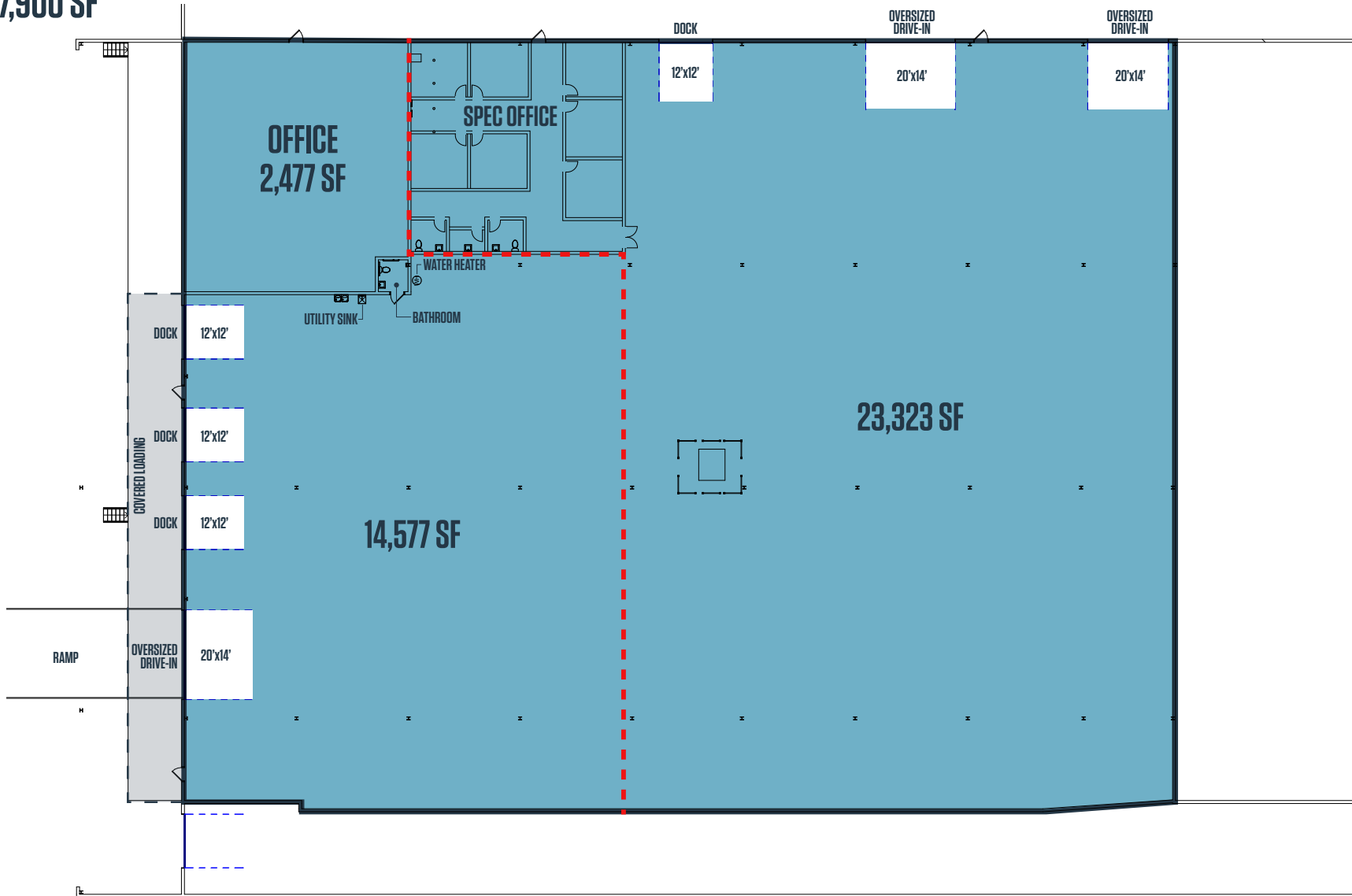


SITE PLAN

GAINESVILLE BUSINESS PARK

14235 JOHN MARSHALL HWY, GAINESVILLE, VA 20155, PRINCE WILLIAM COUNTY

BUILDING B - SUITE 7380 14,577 - 37,900 SF



RYAN GOELLER
rgoeller@klnb.com
703-268-2731

TYLER CUMBERLAND
tcumberland@klnb.com
703-268-2720

CHASE STEWART
cstewart@klnb.com
703-268-2732

JEFF TARAE
jtarae@klnb.com
703-268-2741



SITE PLAN

GAINESVILLE BUSINESS PARK

14235 JOHN MARSHALL HWY, GAINESVILLE, VA 20155, PRINCE WILLIAM COUNTY

1

OUTDOOR STORAGE
54,895 SF



2

OUTDOOR STORAGE
62,618 SF



RYAN GOELLER
rgoeller@klnb.com
703-268-2731

TYLER CUMBERLAND
tcumberland@klnb.com
703-268-2720

CHASE STEWART
cstewart@klnb.com
703-268-2732

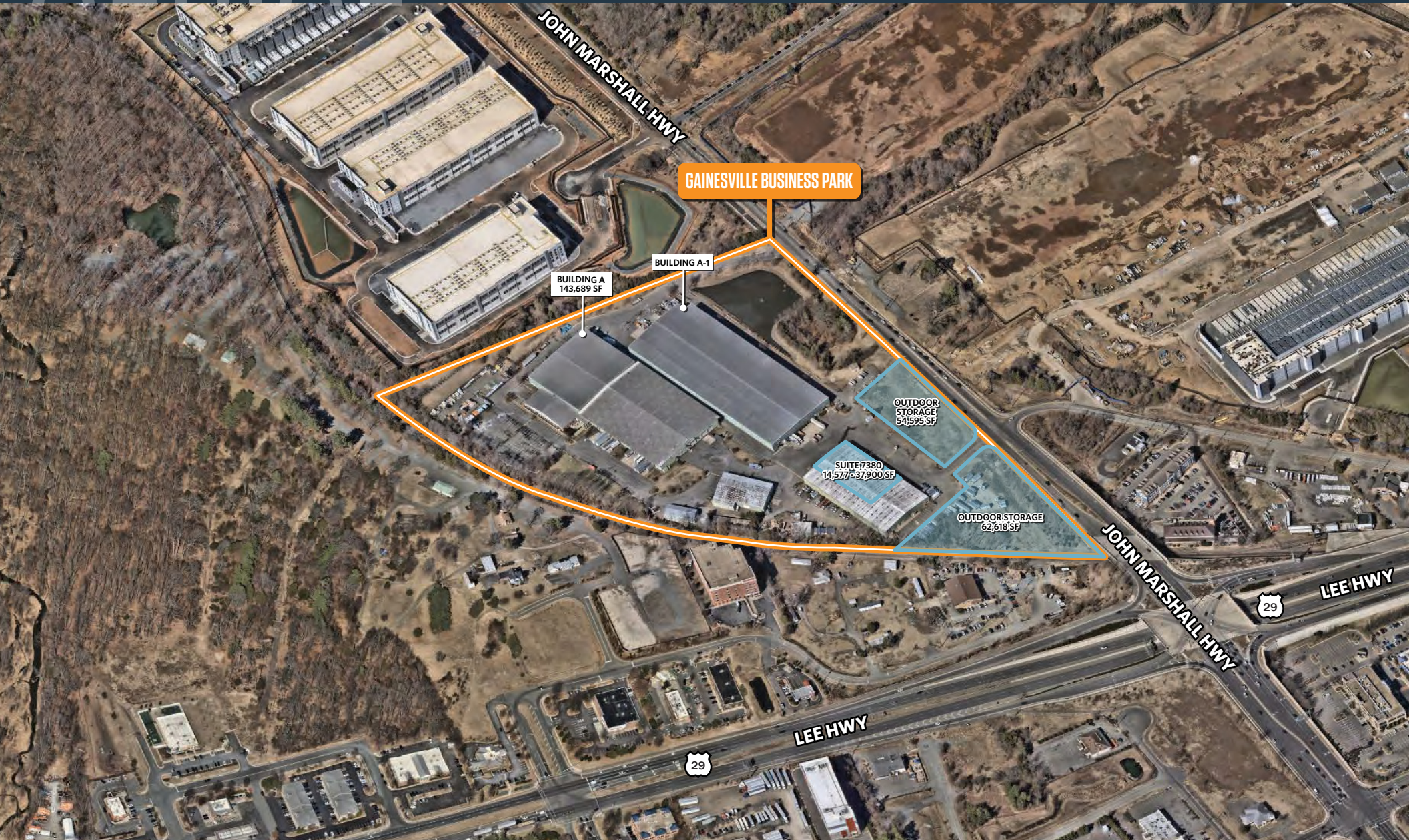
JEFF TARAE
jtarae@klnb.com
703-268-2741



AERIAL

GAINESVILLE BUSINESS PARK

14235 JOHN MARSHALL HWY, GAINESVILLE, VA 20155, PRINCE WILLIAM COUNTY



RYAN GOELLER

rgoeller@klnb.com
703-268-2731

TYLER CUMBERLAND

tcumberland@klnb.com
703-268-2720

CHASE STEWART

cstewart@klnb.com
703-268-2732

JEFF TARAE

jtarae@klnb.com
703-268-2741

NAI klnb

FOR MORE INFORMATION, PLEASE CONTACT:

RYAN GOELLER

rgoeller@klnb.com
703-268-2731

TYLER CUMBERLAND

tcumberland@klnb.com
703-268-2720

CHASE STEWART

cstewart@klnb.com
703-268-2732

JEFF TARAE

jtarae@klnb.com
703-268-2741

8065 Leesburg Pike, Suite 700, Tysons, VA 22182

.....
klnb.com

 [instagram.com/klnbcre](https://www.instagram.com/klnbcre)

 [linkedin.com/company/klnb](https://www.linkedin.com/company/klnb)

 [facebook.com/KLNBCRE](https://www.facebook.com/KLNBCRE)

CLICK TO VIEW PROPERTY WEBSITE