

8031 PHILADELPHIA RD

8031 Philadelphia Rd, Baltimore, MD 21237
Baltimore County



PROPERTY HIGHLIGHTS:

- Building is 4,547 SF
- .17 Acres
- BL AS zoning
- 12' clear
- One Drive in Door

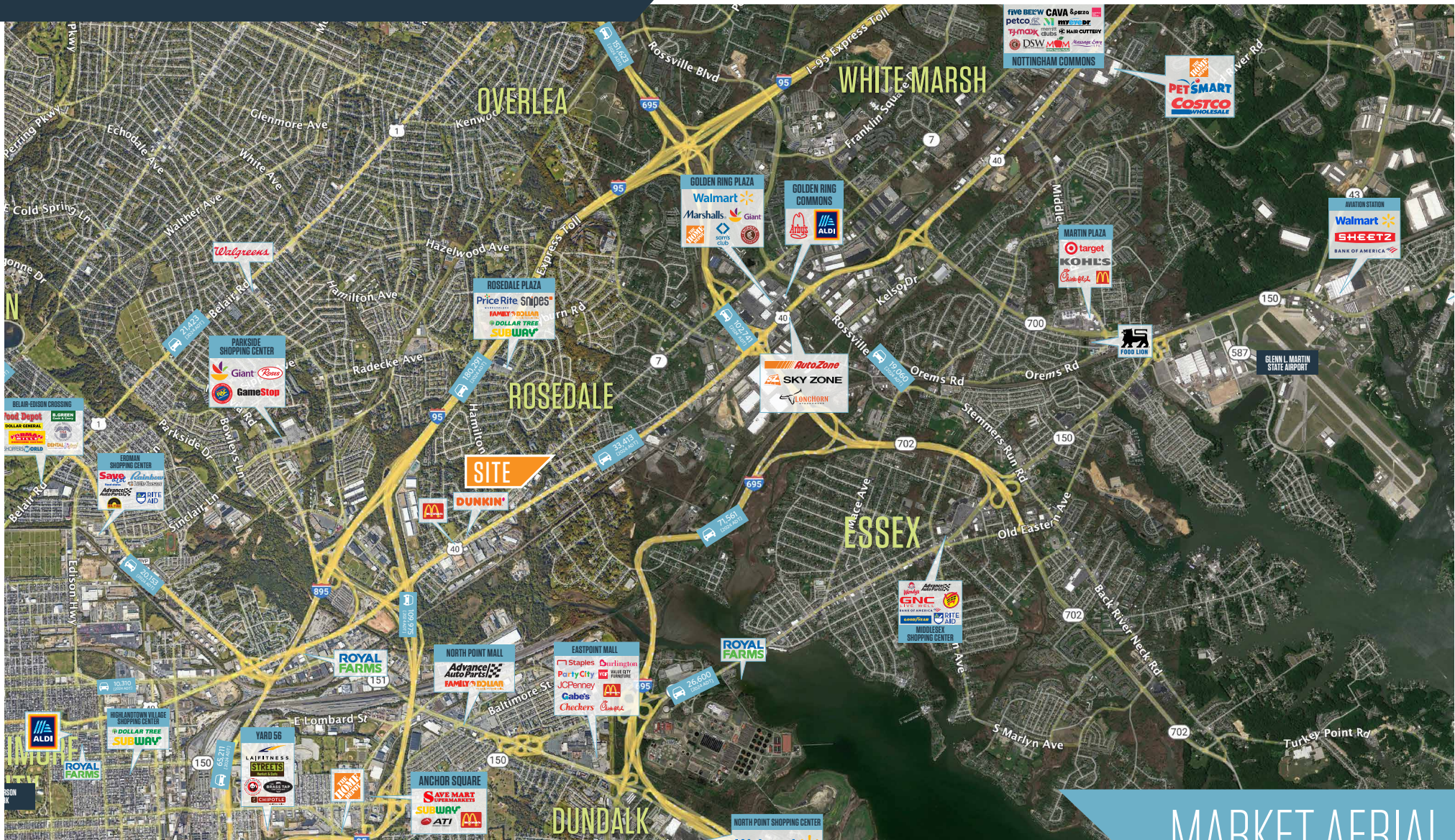
Ben Brooks
bbrooks@klnb.com
443-632-2048

100 West Road, Suite 505
Towson, MD 21204
klnb.com

NAIklnb

8031 PHILADELPHIA RD

8031 Philadelphia Rd, Baltimore, MD 21237
Baltimore County



MARKET AERIAL

Ben Brooks
bbrooks@klnb.com
443-632-2048

100 West Road, Suite 505
Towson, MD 21204
klnb.com



8031 PHILADELPHIA RD

8031 Philadelphia Rd, Baltimore, MD 21237
Baltimore County



CLOSE UP

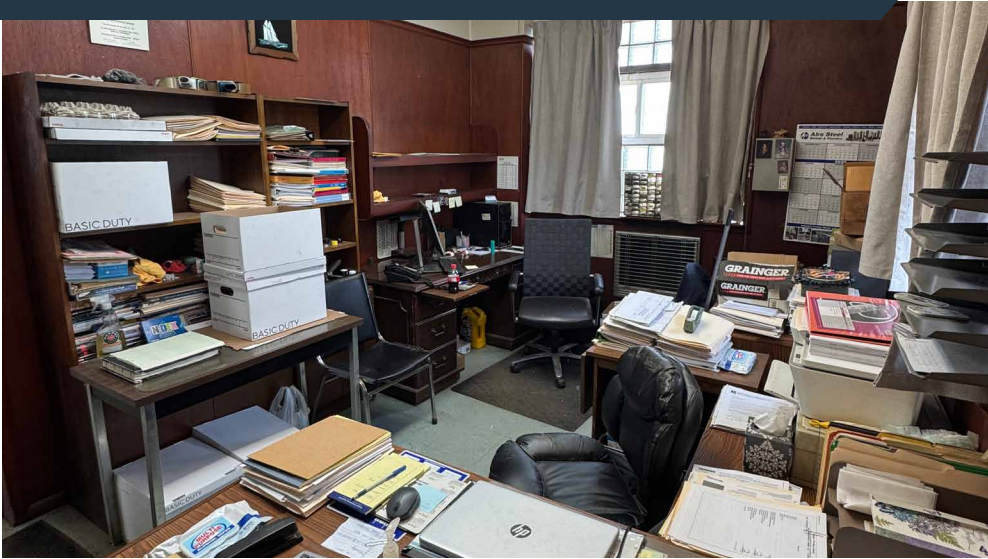
Ben Brooks
bbrooks@klnb.com
443-632-2048

100 West Road, Suite 505
Towson, MD 21204
klnb.com

NAIklnb

8031 PHILADELPHIA RD

8031 Philadelphia Rd, Baltimore, MD 21237
Baltimore County



PHOTOS

Ben Brooks
bbrooks@klnb.com
443-632-2048

100 West Road, Suite 505
Towson, MD 21204
klnb.com

NAklnb

8031 PHILADELPHIA RD

8031 Philadelphia Rd, Baltimore, MD 21237
Baltimore County

CLICK TO VIEW PROPERTY WEBSITE

For More Information, Please Contact:

Ben Brooks

bbrooks@klnb.com

443-632-2048

100 West Road, Suite 505
Baltimore, MD 21204

klnb.com



[instagram.com/klnbcrc](https://www.instagram.com/klnbcrc)



[linkedin.com/company/klnb](https://www.linkedin.com/company/klnb)



[facebook.com/KLNBCRE](https://www.facebook.com/KLNBCRE)

While we have no reason to doubt the accuracy of any of the information supplied, we cannot, and do not, guarantee its accuracy. All information should be independently verified prior to a purchase or lease of the property. We are not responsible for errors, omissions, misuse, or misinterpretation of information contained herein and make no warranty of any kind, express or implied, with respect to the property or any other matters.

NAI klnb