

# CRANBERRY BUSINESS PARK

1003, 1009, 1007-1011, 1015 Old Philadelphia Road  
Aberdeen, MD 21001 | Harford County



## FOR LEASE

### PROPERTY HIGHLIGHTS:

- **Total SF Available:** 6,000 - 130,250 SF
- **Max Contiguous:** 48,000 SF
- **Clear Height:** 19' - 24'
- **Loading:** Dock and drive-In loading
- **Sprinkler:** Wet
- **Lighting:** LED
- **Zoning:** M2 - Heavy Industrial
- **Access:** Easy access to all points via Route 40 and I-95
- **Rental Rate:** \$7.75 - \$9.75
- **Operating Expenses:** \$1.65/SF - 2025 estimate

**Christopher Wright**  
cwright@klnb.com  
443-914-2600

**Ben Brooks**  
bbrooks@klnb.com  
443-632-2048

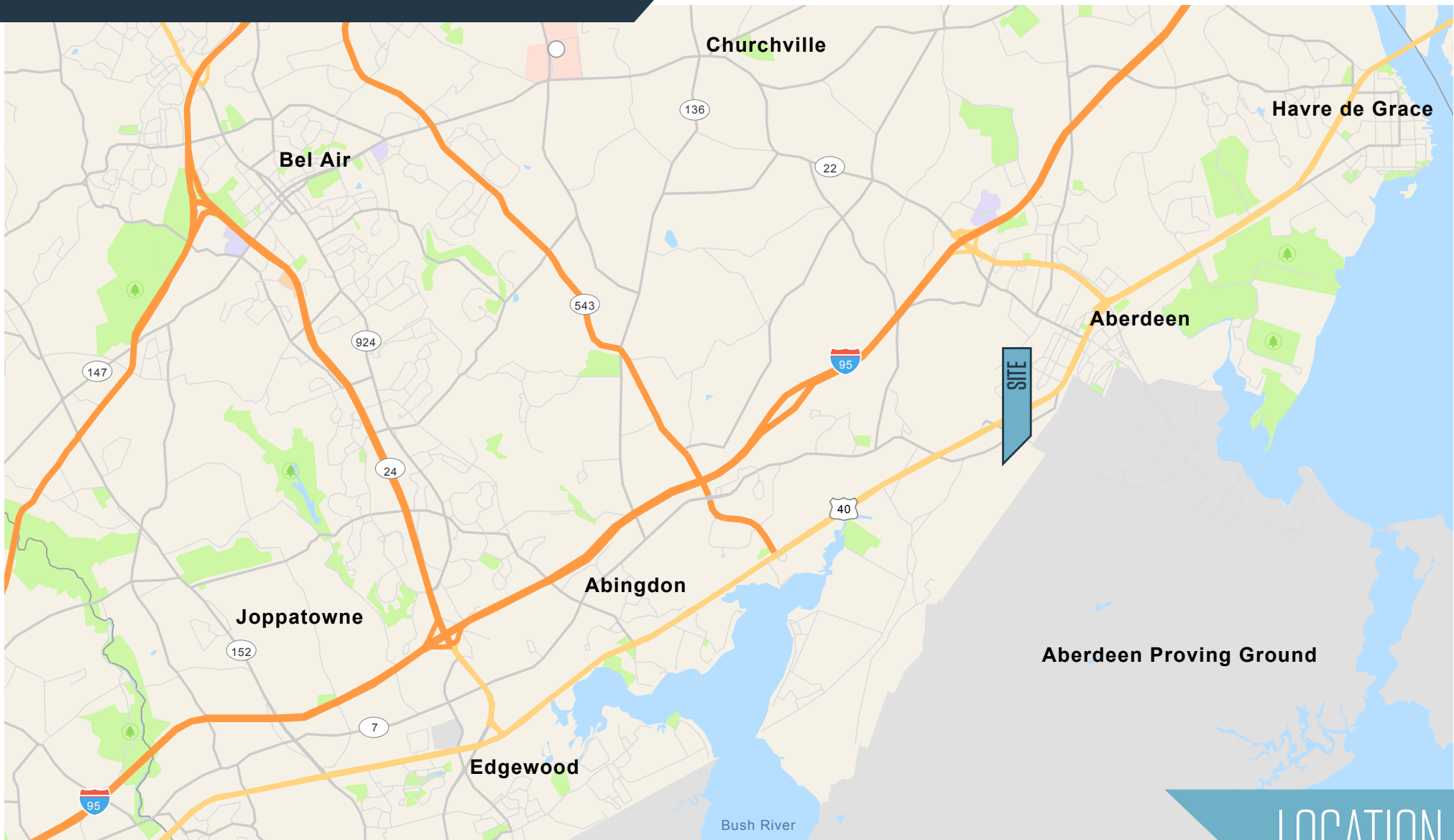
**Peter Dudley**  
pdudley@klnb.com  
443-632-2064

100 West Road, Suite 505  
Baltimore, MD 21204  
[klnb.com](http://klnb.com)

**NAI**klnb

# CRANBERRY BUSINESS PARK

1003, 1009, 1007-1011, 1015 Old Philadelphia Road  
Aberdeen, MD 21001 | Harford County



LOCATION

**Christopher Wright**  
cwright@klnb.com  
443-914-2600

**Ben Brooks**  
bbrooks@klnb.com  
443-632-2048

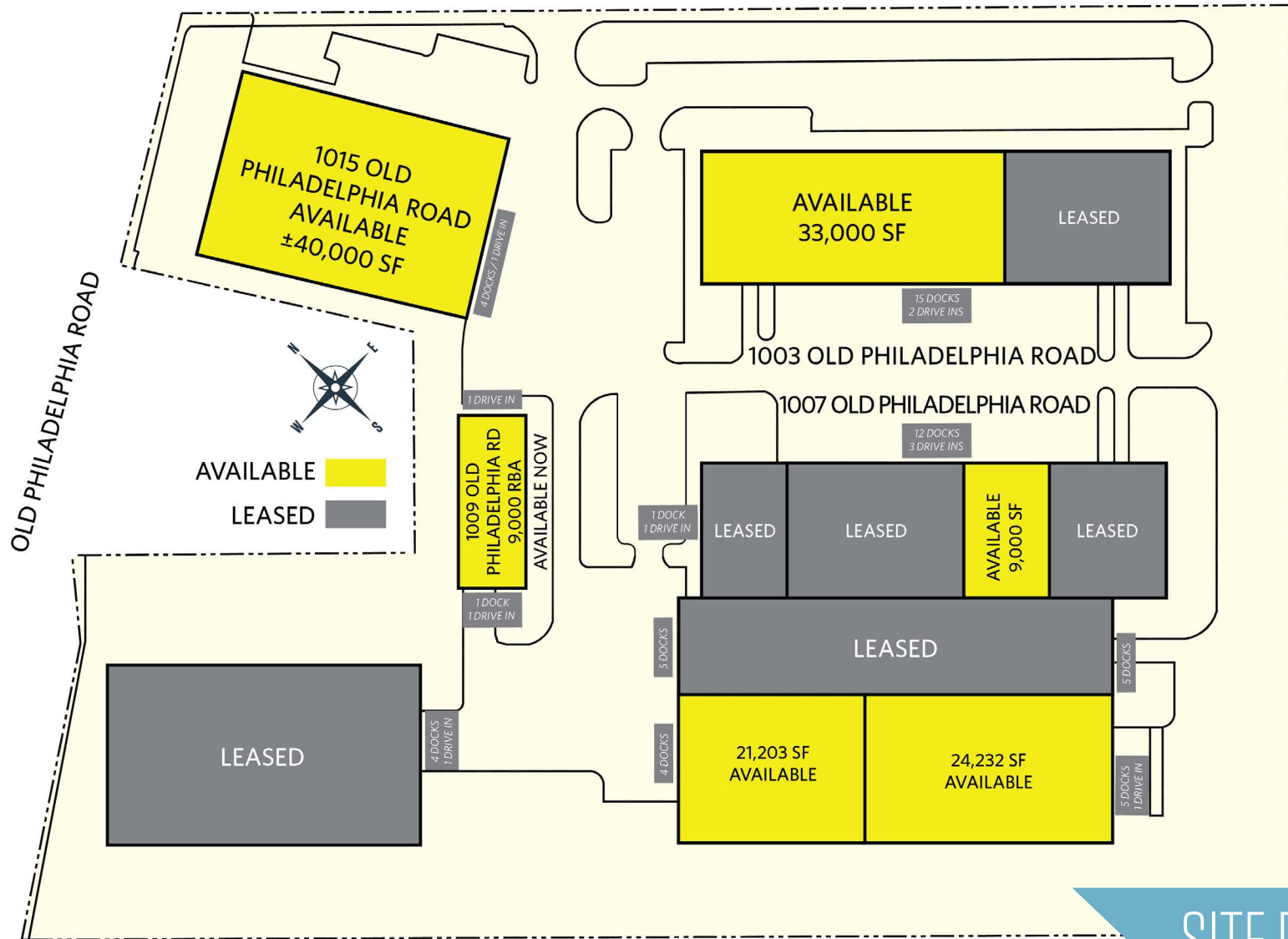
**Peter Dudley**  
pdudley@klnb.com  
443-632-2064

100 West Road, Suite 505  
Baltimore, MD 21204  
[klnb.com](http://klnb.com)



# CRANBERRY BUSINESS PARK

1003, 1009, 1007-1011, 1015 Old Philadelphia Road  
Aberdeen, MD 21001 | Harford County



SITE PLAN

**Christopher Wright**  
cwright@klnb.com  
443-914-2600

**Ben Brooks**  
bbrooks@klnb.com  
443-632-2048

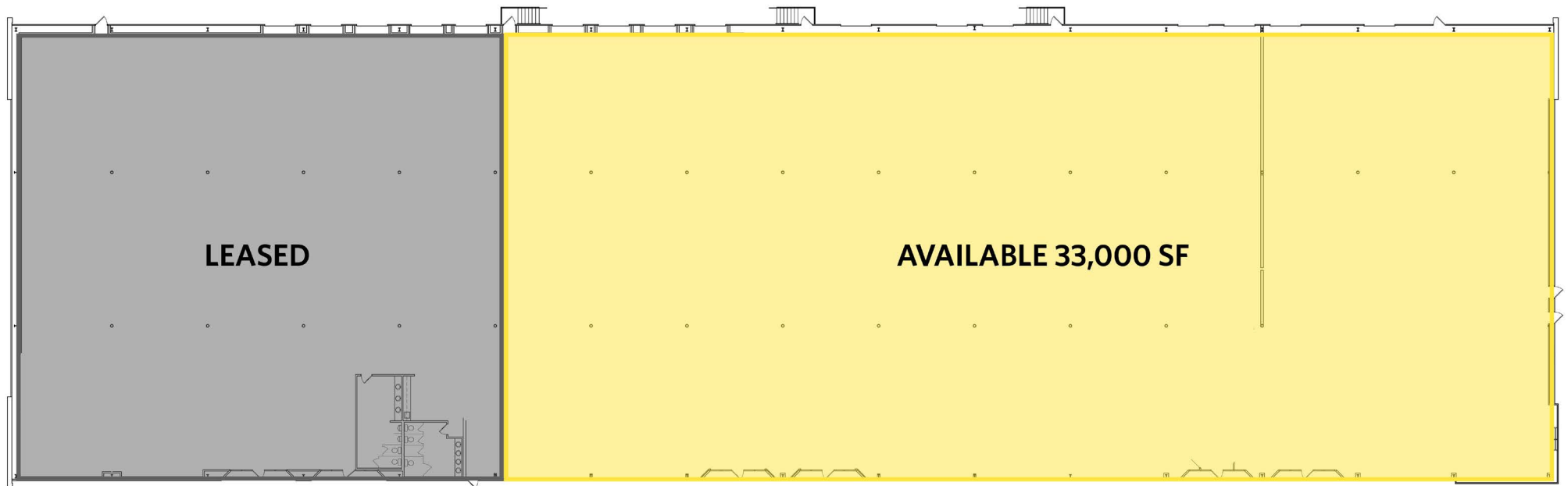
**Peter Dudley**  
pdudley@klnb.com  
443-632-2064

100 West Road, Suite 505  
Baltimore, MD 21204  
[klnb.com](http://klnb.com)



# CRANBERRY BUSINESS PARK

1003, 1009, 1007-1011, 1015 Old Philadelphia Road  
Aberdeen, MD 21001 | Harford County



## 1003 FLOOR PLAN

**Christopher Wright**  
cwright@klnb.com  
443-914-2600

**Ben Brooks**  
bbrooks@klnb.com  
443-632-2048

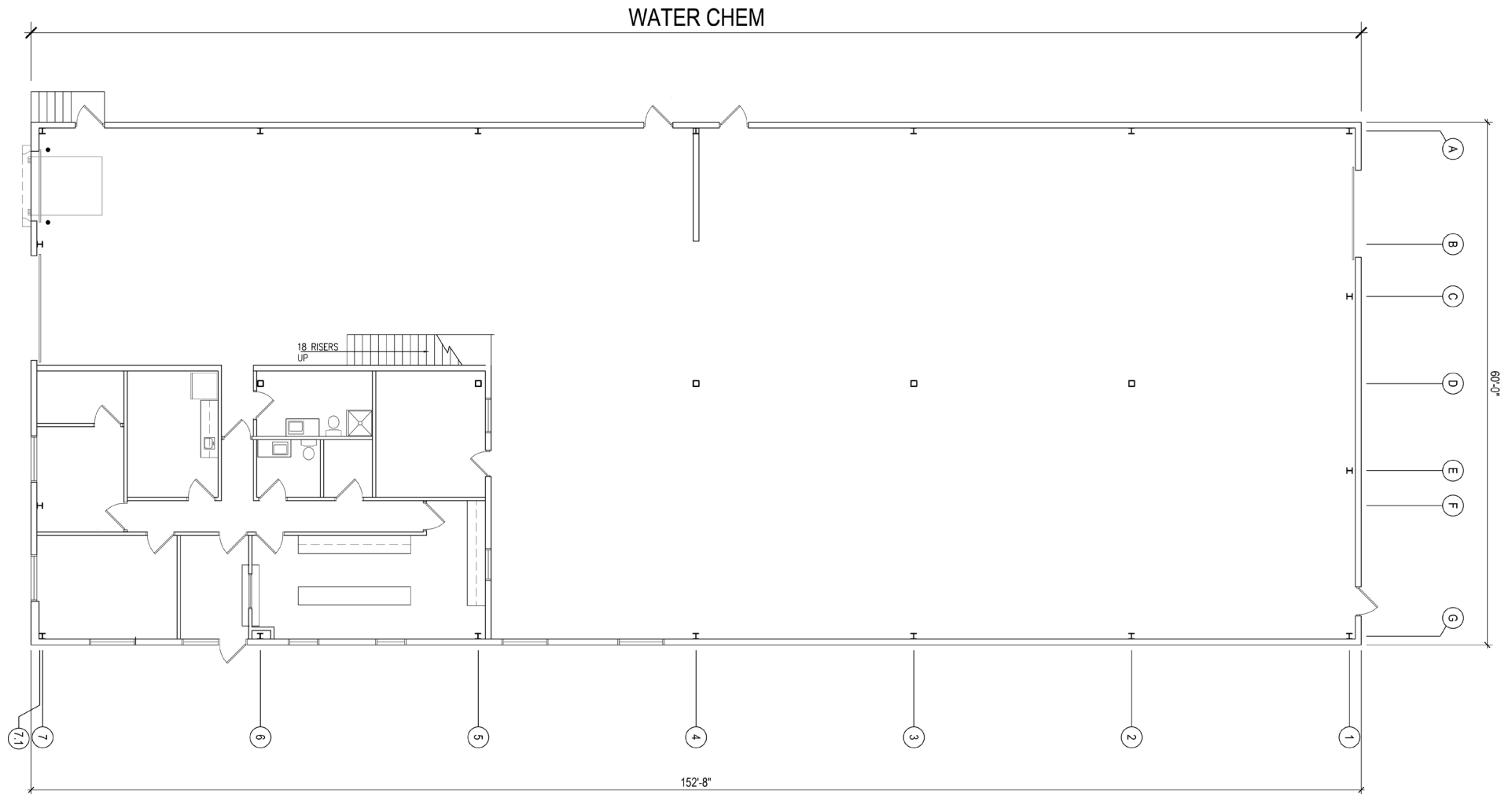
**Peter Dudley**  
pdudley@klnb.com  
443-632-2064

100 West Road, Suite 505  
Baltimore, MD 21204  
[klnb.com](http://klnb.com)



# CRANBERRY BUSINESS PARK

1003, 1009, 1007-1011, 1015 Old Philadelphia Road  
Aberdeen, MD 21001 | Harford County



## 1009 FLOOR PLAN

**Christopher Wright**  
cwright@klnb.com  
443-914-2600

**Ben Brooks**  
bbrooks@klnb.com  
443-632-2048

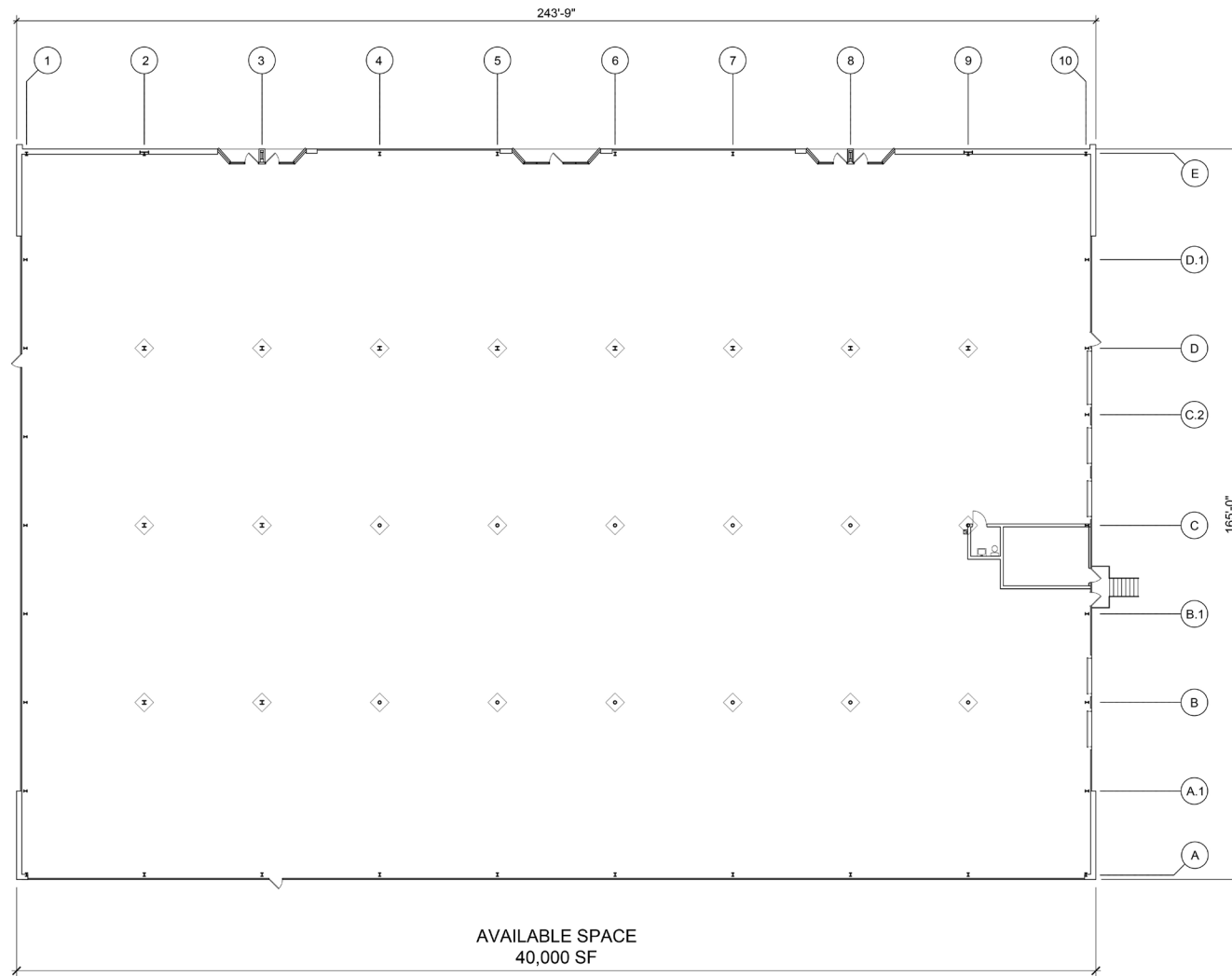
**Peter Dudley**  
pdudley@klnb.com  
443-632-2064

100 West Road, Suite 505  
Baltimore, MD 21204  
[klnb.com](http://klnb.com)



# CRANBERRY BUSINESS PARK

1003, 1009, 1007-1011, 1015 Old Philadelphia Road  
Aberdeen, MD 21001 | Harford County



## 1015 FLOOR PLAN

**Christopher Wright**  
cwright@klnb.com  
443-914-2600

**Ben Brooks**  
bbrooks@klnb.com  
443-632-2048

**Peter Dudley**  
pdudley@klnb.com  
443-632-2064

100 West Road, Suite 505  
Baltimore, MD 21204  
**klnb.com**



# CRANBERRY BUSINESS PARK

1009, 1007-1011, 1015 Old Philadelphia Road  
Aberdeen, MD 21001 | Harford County

[CLICK TO VIEW PROPERTY WEBSITE](#)

For More Information, Please Contact:

**Christopher Wright**

cwright@klnb.com  
443-914-2600

**Ben Brooks**

bbrooks@klnb.com  
443-632-2048

**Peter Dudley**

pdudley@klnb.com  
443-632-2064

100 West Road, Suite 505  
Baltimore, MD 21204

[klnb.com](http://klnb.com)



[instagram.com/klnbcre](https://www.instagram.com/klnbcre)



[linkedin.com/company/klnb](https://www.linkedin.com/company/klnb)



[facebook.com/KLNBCRE](https://www.facebook.com/KLNBCRE)

While we have no reason to doubt the accuracy of any of the information supplied, we cannot, and do not, guarantee its accuracy. All information should be independently verified prior to a purchase or lease of the property. We are not responsible for errors, omissions, misuse, or misinterpretation of information contained herein and make no warranty of any kind, express or implied, with respect to the property or any other matters.

