



3.82 ACRES LAND PARCEL FOR SALE

SITE

AVAILABILITY:

3.82 Acres
\$3,000,000

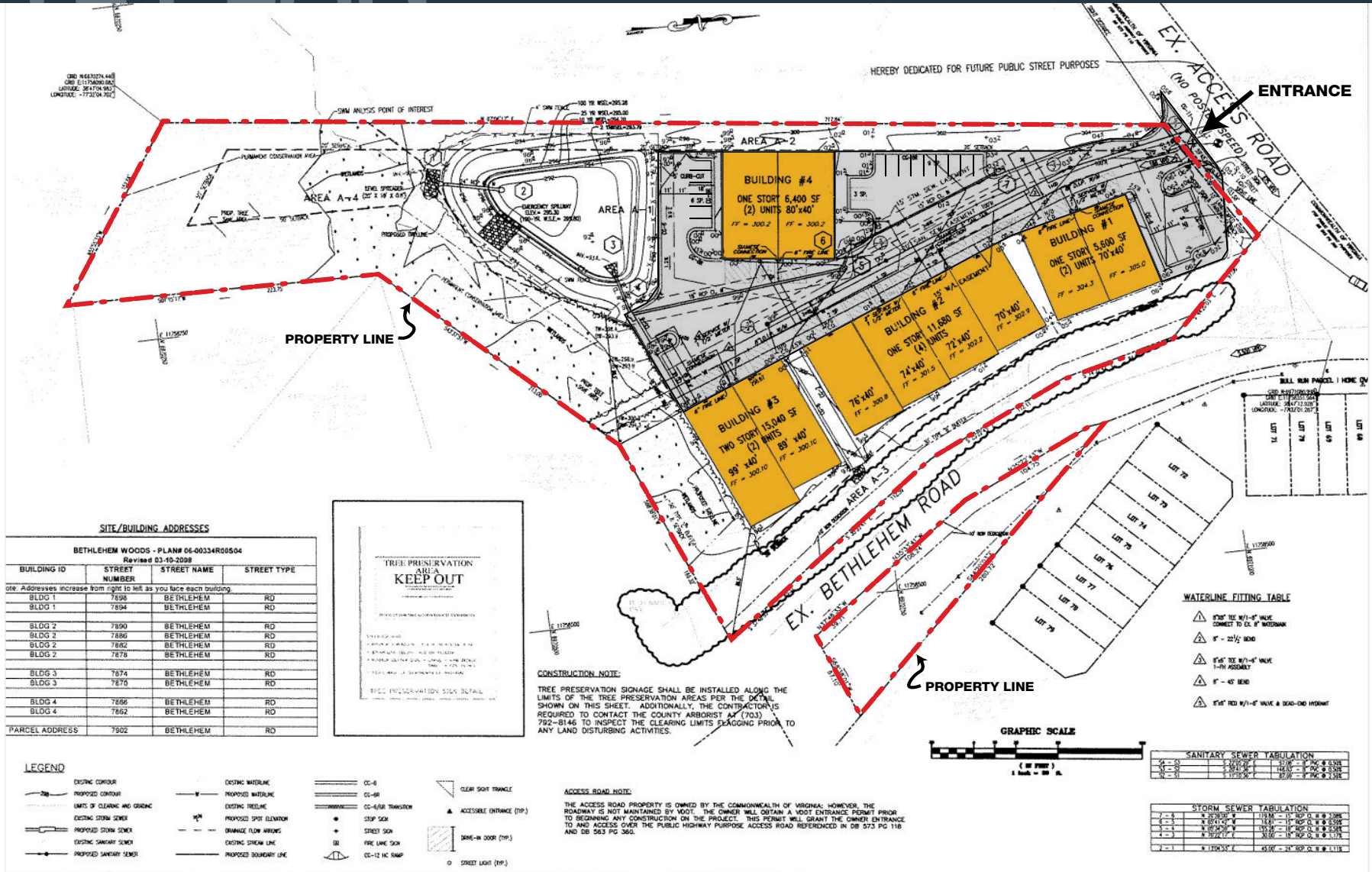
PROPERTY FEATURES:

- Conveniently located between Sudley Road and Prince William Parkway, just south of Balls Ford Road, 2 miles from Route 66
- 1/4 Mile from NOVEC Power Sub-Station
- Site Plan Approved
- Zoning: M-2, Light Industrial with limited outside storage

SITE PLAN

7902 BETHLEHEM ROAD

MANASSAS, VA 20109, PRINCE WILLIAM COUNTY



[CLICK TO VIEW PROPERTY WEBSITE](#)



While we have no reason to doubt the accuracy of any of the information supplied, we cannot, and do not, guarantee its accuracy. All information should be independently verified prior to a purchase or lease of the property. We are not responsible for errors, omissions, misuse, or misinterpretation of information contained herein and make no warranty of any kind, express or implied, with respect to the property or any other matters.

8065 Leesburg Pike, Suite 700
Vienna, VA 22182