



**NOW AVAILABLE:**  
VERIZON FIOS & COX

## AVAILABILITY

### 5702 General Washington Dr

- Suite F:
  - 1,475 SF
  - Open Warehouse
  - One (1) Drive In Door

### 5706 General Washington Dr (Up To 5,260 Contiguous SF)

- Suite E:
  - 2,630 SF
  - Open Warehouse
  - One (1) Drive In Door
- Suite K:
  - 2,620 SF
  - 1/3 office, 2/3 warehouse
  - One (1) Interior Dock Door
  - Fully Conditioned
- Suite F:
  - 2,630 SF
  - 2/3 Finished Office, 1/3 Warehouse
  - One (1) Drive In Door
- Suite H:
  - 2,630 SF
  - 1/3 Office, 2/3 Warehouse
  - One (1) Drive In Door
  - Available May 1, 2026

## PROPERTY HIGHLIGHTS

- Rate: Negotiable
- Estimated OPEX: \$3.97 PSF
- Abundant Parking
- Easy Access to I-395 & I-495
- Signage Visibility on I-395 or General Washington Drive

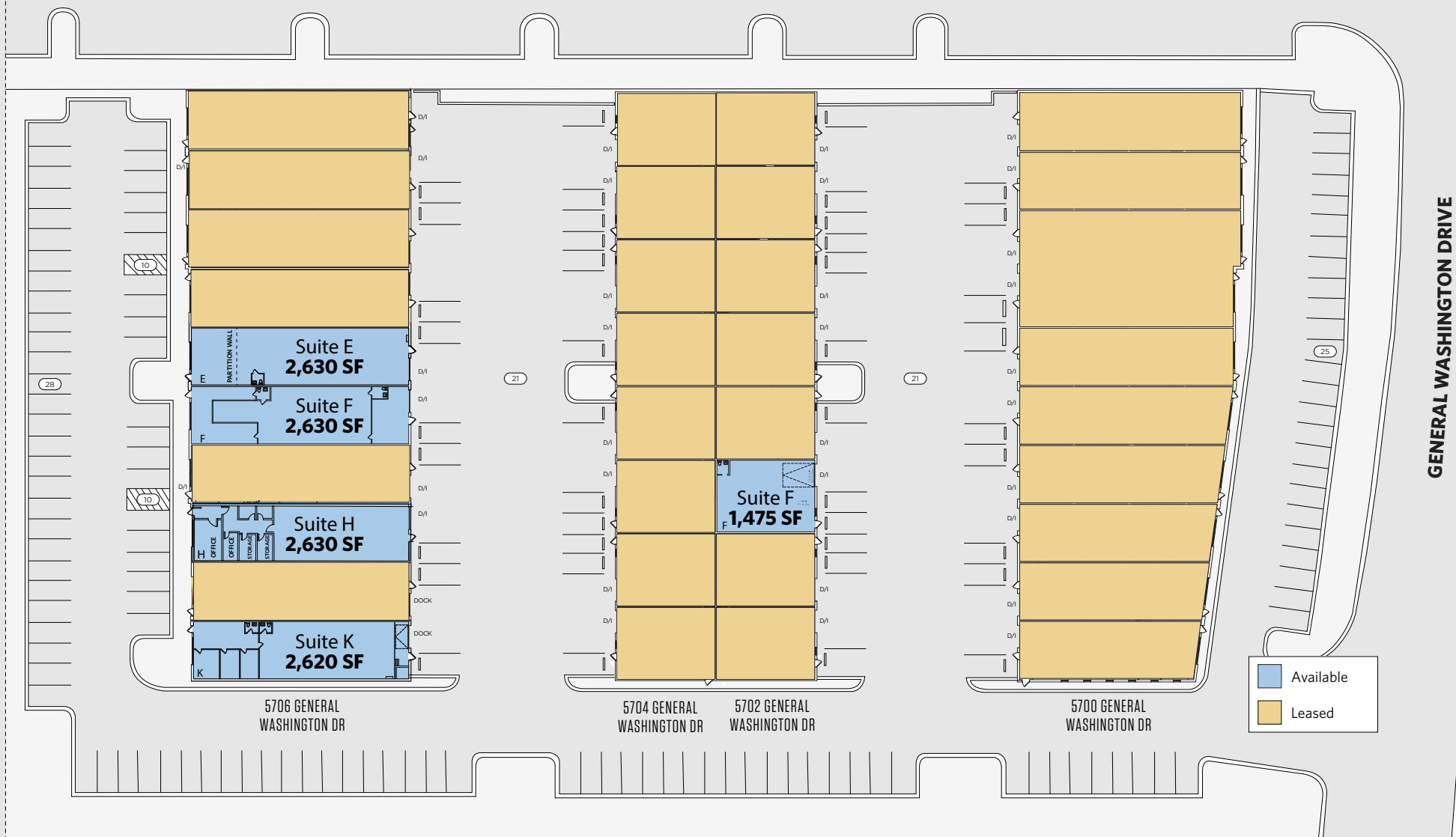
# SITE PLAN

# BREN MAR CENTER

5700 - 5706 GENERAL WASHINGTON DRIVE, ALEXANDRIA, VA 22314, FAIRFAX COUNTY



HENRY G SHIRLEY HIGHWAY



GENERAL WASHINGTON DRIVE

**RYAN MOODY**

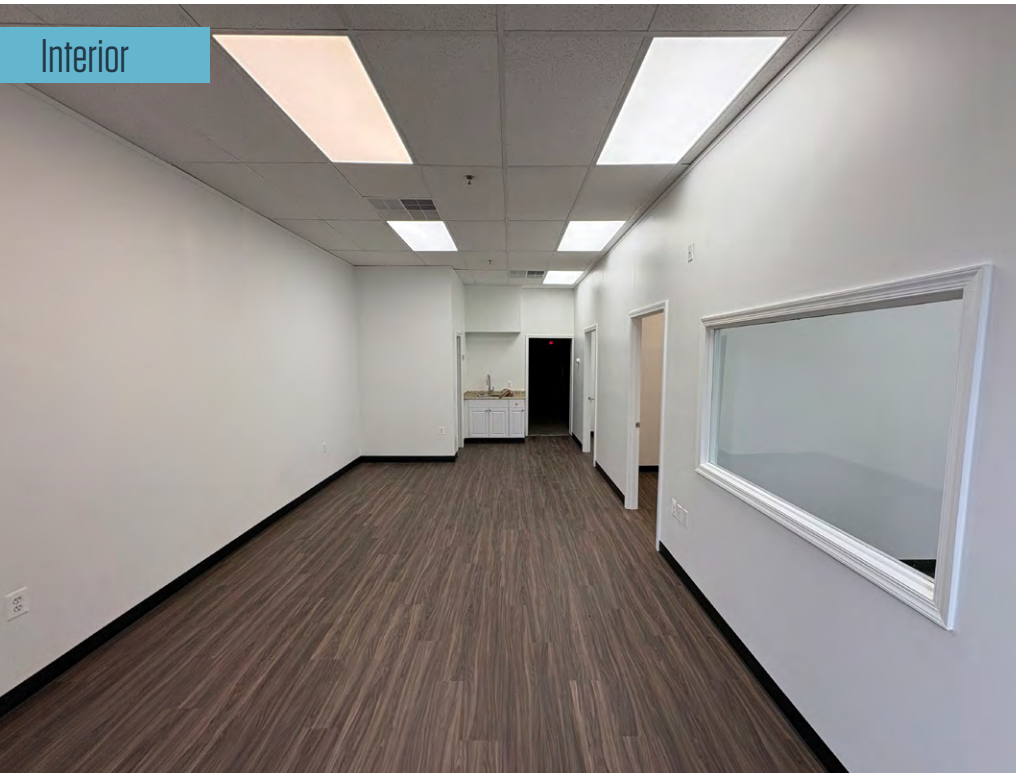
rmoody@klnb.com | 703-268-2739

**KEENAN WOOFER**

kwoofter@klnb.com | 703-268-2744



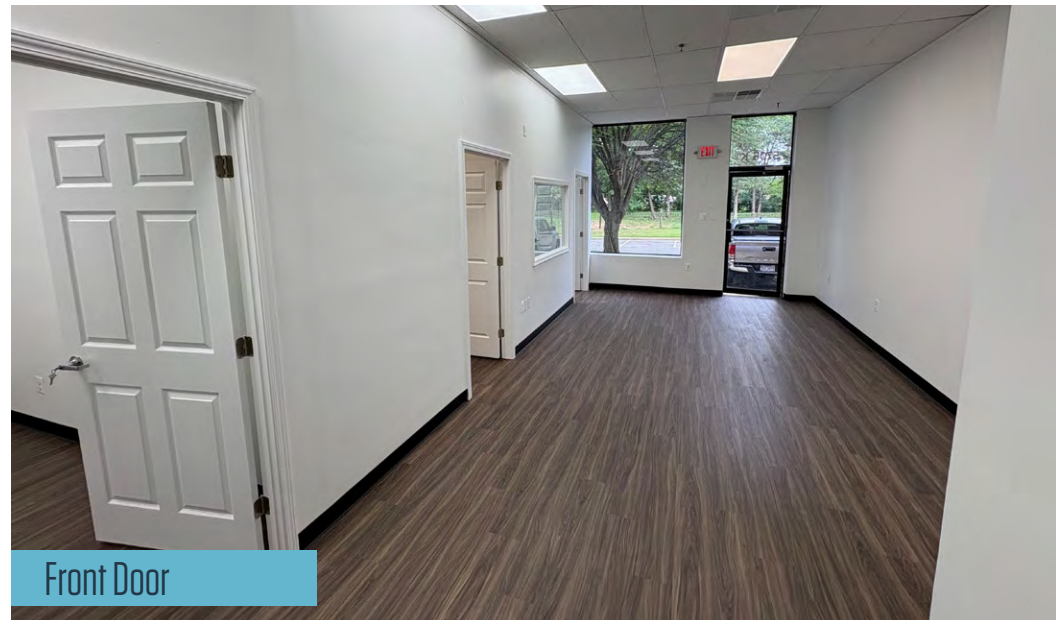
## 5700 General Washington Dr Suite K | 2,620 SF



Interior



Warehouse



Front Door

**RYAN MOODY**

rmoody@klnb.com | 703-268-2739

**KEENAN WOOFER**

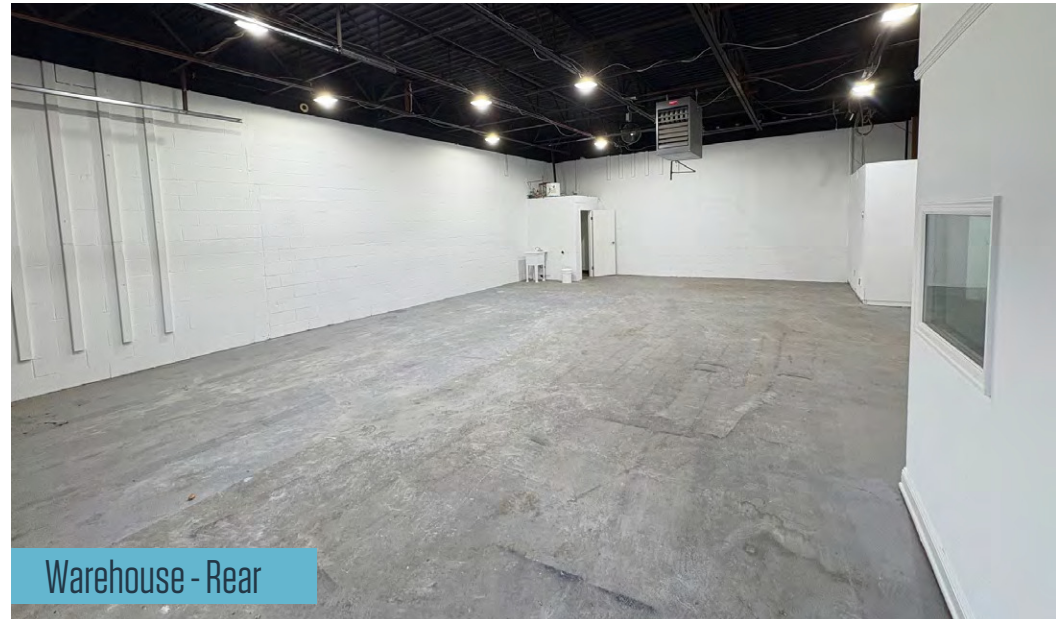
kwoofter@klnb.com | 703-268-2744

5704 General Washington Dr  
Suite H | 1,475 SF

Front Door



Warehouse - Front



Warehouse - Rear

**RYAN MOODY**

rmoody@klnb.com | 703-268-2739

**KEENAN WOOFER**

kwoofter@klnb.com | 703-268-2744

5706 General Washington Dr  
Suite E | 2,630 SF

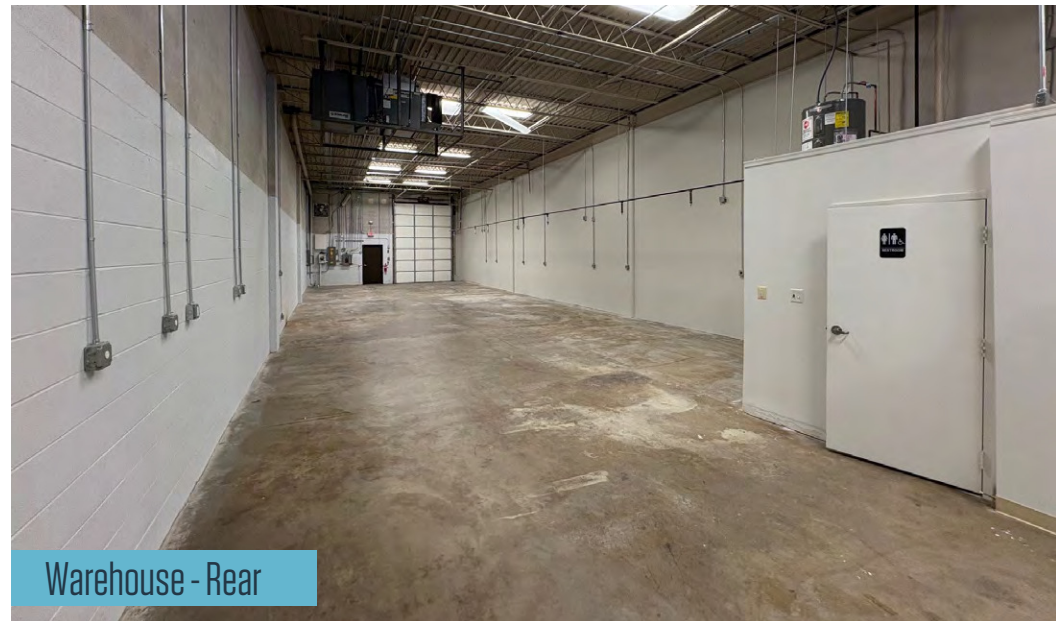
Front Door



Warehouse - Front



Warehouse - Rear



**RYAN MOODY**

rmoody@klnb.com | 703-268-2739

**KEENAN WOOFER**

kwoofer@klnb.com | 703-268-2744

5706 General Washington Dr  
Suite F | 2,630 SF



**RYAN MOODY**

rmoody@klnb.com | 703-268-2739

**KEENAN WOOFER**

kwoofter@klnb.com | 703-268-2744

# AERIAL

# BREN MAR CENTER

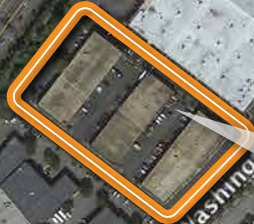
5700 - 5706 GENERAL WASHINGTON DRIVE, ALEXANDRIA, VA 22314, FAIRFAX COUNTY

Alexandria  
Fairfax County | Virginia

**NAI**klnb

- Google Earth Pro -  
2018 Aerial Photograph

While we have no reason to doubt the accuracy of any of the information supplied, we cannot, and do not, guarantee its accuracy.



## ALEXANDRIA

**RYAN MOODY**

rmoody@klnb.com | 703-268-2739

**KEENAN WOOFER**

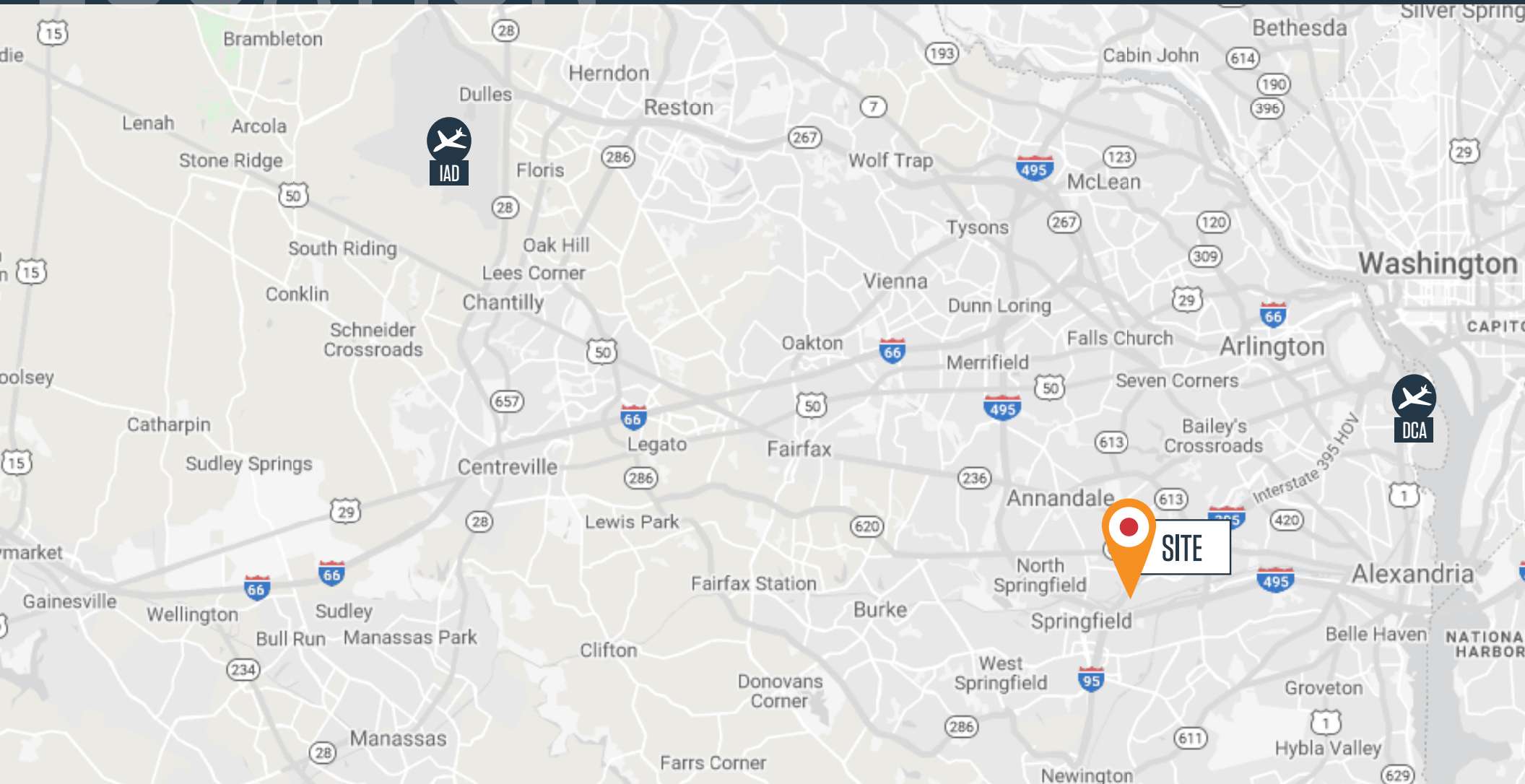
kwoofer@klnb.com | 703-268-2744

**NAI**klnb

# LOCATION

# BREN MAR CENTER

5700 - 5706 GENERAL WASHINGTON DRIVE, ALEXANDRIA, VA 22314, FAIRFAX COUNTY



## STRATEGIC LOCATION

• I-395..... 1.9 Miles	• Old Town Alexandria..... 10.6 Miles	• Ronald Reagan National Airport ..... 10 Miles
• I-495 ..... 4.6 Miles	• Dulles International Airport..... 27.1 Miles	• Washington, DC..... 12.3 Miles

**RYAN MOODY**

rmoody@klnb.com | 703-268-2739

**KEENAN WOOFER**

kwoofter@klnb.com | 703-268-2744



## FOR MORE INFORMATION, PLEASE CONTACT:

### RYAN MOODY

rmood@klnb.com | 703-268-2739

### KEENAN WOOFER

kwoofte@klnb.com | 703-268-2744

8065 Leesburg Pike, Suite 700, Tysons, VA 22182

.....

## klnb.com



**CLICK TO VIEW PROPERTY WEBSITE**