

# NORTH POINTE PLAZA

2722 N Salisbury Blvd, Suite 1, Salisbury, MD 21801

Wicomico County



**HOBBY LOBBY**

**AVAILABLE**  
11,960 SF  
**SALLY BEAUTY**  
CHINATOWN BUFFET  
GRILL & SUSHI

**KOHL'S**

**NORTH POINTE PLAZA**

**DOLLAR TREE**  
**BUFFALO WILD WINGS**

**Wendy's**

**BURGER KING**

**verizon**

**HSB**  
Hebron Savings Bank

**ihop**

**Chick-fil&**

**Wawa**

Dagsboro Rd

34,540  
[2024 ADT]

**Ocean Hwy**

Joe Mekulski  
jmekulski@klnb.com  
443-632-1343

Joe Botzler  
jbotzler@klnb.com  
443-226-2703

100 West Road, Suite 505  
Towson, MD 21204  
klnb.com



# NORTH POINTE PLAZA

2722 N Salisbury Blvd, Suite 1, Salisbury, MD 21801  
Wicomico County



## JOIN



## RETAIL FOR LEASE

- 11,960 SF of junior anchor space for lease in the heart of the Salisbury retail market.
- North Point Plaza is shadow anchored by Super Walmart, Kohls and Sam's Club.
- Co-tenants include: Hobby Lobby, Dollar Tree, Buffalo Wild Wings, and Chinatown Buffet.
- Adjacent pad tenants include: Chili's, Wawa, Chick-Fil-A, IHOP, Verizon, Hebron Savings Bank, Burger King & Wendy's.
- Four (4) point of ingress/egress from Rt. 13 including two signalized intersections and traffic of 34,540 VPD.
- High Performing Retailers with Strong Placer ratings.
  - Chick Fil A-98th Percentile in MD
  - Walmart-78th Percentile in MD
  - Hobby Lobby-70th Percentile in MD

LEASED BY:

**klnb**

**Joe Mekulski**  
jmekulski@klnb.com  
443-632-1343

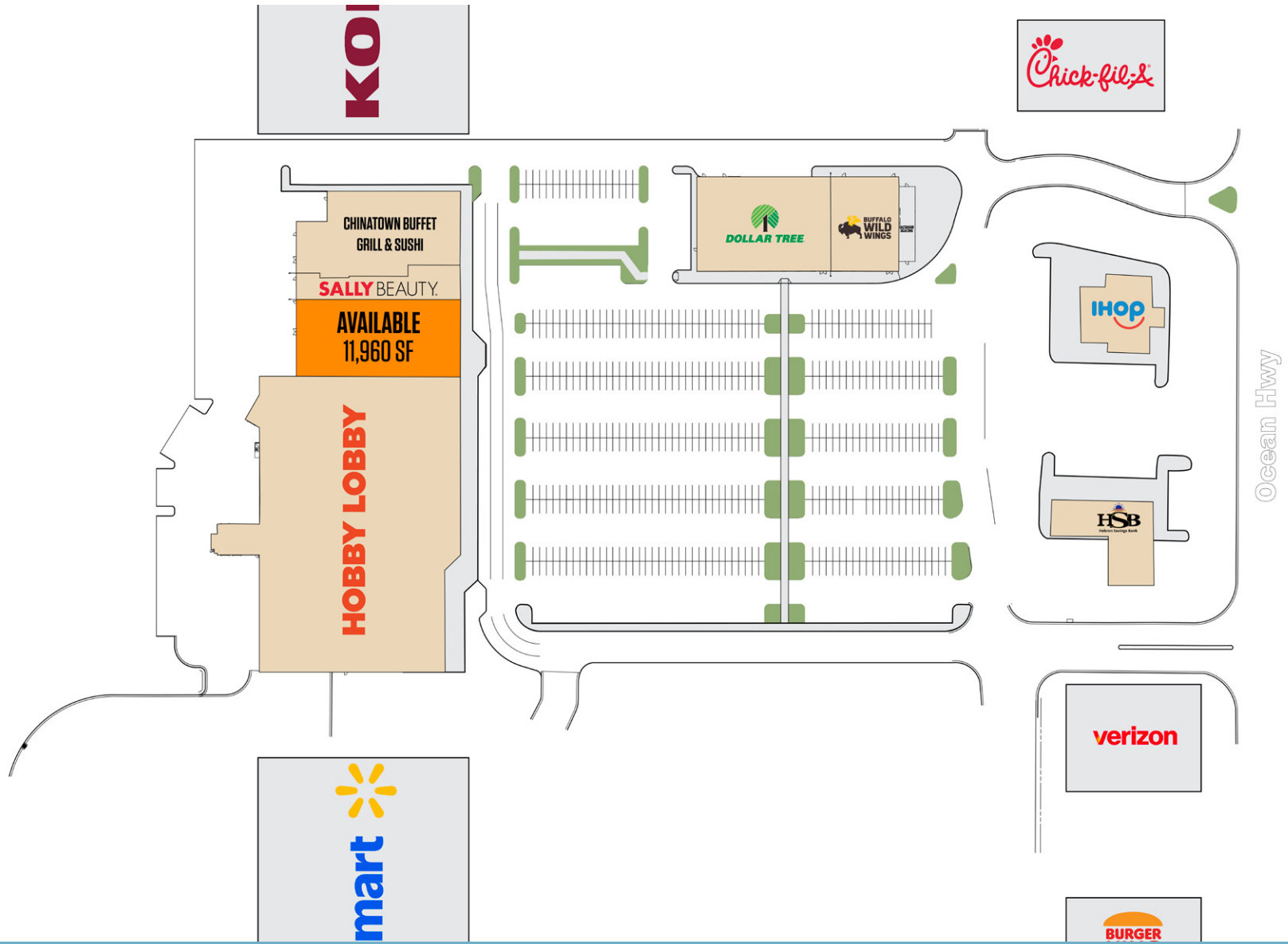
**Joe Botzler**  
jbotzler@klnb.com  
443-226-2703

100 West Road, Suite 505, Towson, MD 21204  
klnb.com

# NORTH POINTE PLAZA

2722 N Salisbury Blvd, Suite 1, Salisbury, MD 21801  
Wicomico County

## SITE PLAN



Joe Mekulski  
jmekulski@klnb.com  
443-632-1343

Joe Botzler  
jbotzler@klnb.com  
443-226-2703

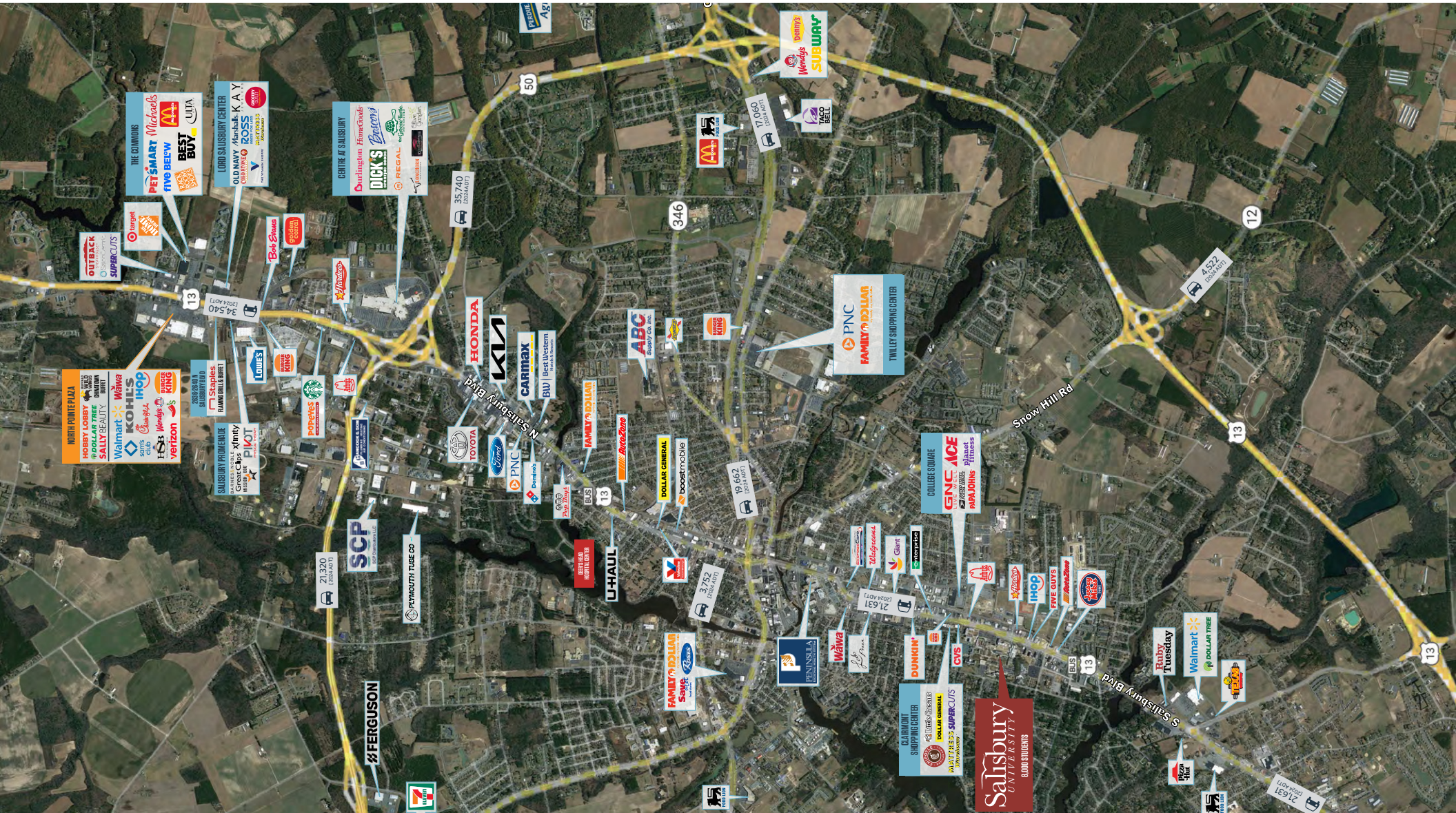
100 West Road, Suite 505  
Towson, MD 21204  
klnb.com



# NORTH POINTE PLAZA

2722 N Salisbury Blvd, Suite 1, Salisbury, MD 21801  
Wicomico County

MARKET AERIAL



Joe Mekulski  
jmekulski@klnb.com  
443-632-1343

Joe Botzler  
jbotzler@klnb.com  
443-226-2703

100 West Road, Suite 505  
Towson, MD 21204  
klnb.com



# NORTH POINTE PLAZA

2722 N Salisbury Blvd, Suite 1, Salisbury, MD 21801  
Wicomico County



**AVAILABLE SPACE:**  
• 11,960 SF

**LOCATION  
& DEMOGRAPHICS**

[DOWNLOAD DEMOGRAPHIC REPORT](#)

## TRAFFIC COUNTS | 2024

Ocean Hwy	34,540 ADT
-----------	------------

	3-MILES	5-MILES	10-MILES				
	Population 21,858	57,740	114,451		Households 8,636	23,179	44,426
	Daytime Population 23,947	70,637	114,222		Average Household Income \$89,662	\$84,618	\$93,587

**Joe Mekulski**  
jmekulski@klnb.com  
443-632-1343

**Joe Botzler**  
jbotzler@klnb.com  
443-226-2703

100 West Road, Suite 505  
Towson, MD 21204  
klnb.com



# NORTH POINTE PLAZA

2722 N Salisbury Blvd, Suite 1, Salisbury, MD 21801

Wicomico County

[CLICK TO VIEW PROPERTY WEBSITE](#)

**For More Information, Please Contact:**

**Joe Mekulski**

[jmekulski@klnb.com](mailto:jmekulski@klnb.com)

443-632-1343

**Joe Botzler**

[jbotzler@klnb.com](mailto:jbotzler@klnb.com)

443-226-2703



While we have no reason to doubt the accuracy of any of the information supplied, we cannot, and do not, guarantee its accuracy. All information should be independently verified prior to a purchase or lease of the property. We are not responsible for errors, omissions, misuse, or misinterpretation of information contained herein and make no warranty of any kind, express or implied, with respect to the property or any other matters.

100 West Road, Suite 505  
Towson, MD 21204  
[klnb.com](http://klnb.com)

