

HAMPTON COMMERCE CENTER

9201 - 9203 Hampton Overlook
Capitol Heights, MD 20743, Prince George's County

OVERSIZED DRIVE-IN DOORS



OFFICE/WAREHOUSE FOR LEASE

PROPERTY FEATURES

- **Project:** Hampton Commerce Center 1 & 2
- **Building 1:** 45,000 SF; 18' clear ceiling height
- **Building 2:** 28,830 SF; 16' clear ceiling height
- **Zoning:** IE (Industrial, Employment)
- **Parking Ratio:** 2.6 per 1,000 square feet

CURRENT SPACE AVAILABILITY

- 9201 - 9203 Hampton Overlook: 4,260 SF AVAILABLE IMMEDIATELY
- Two (2) large drive-in doors
- Approximately 1/4 office with training room and 2 restrooms
- Window offices on two (2) sides
- End unit at prominent location at entrance to property

Aaron Carroll
acarroll@klnb.com
202-652-2333

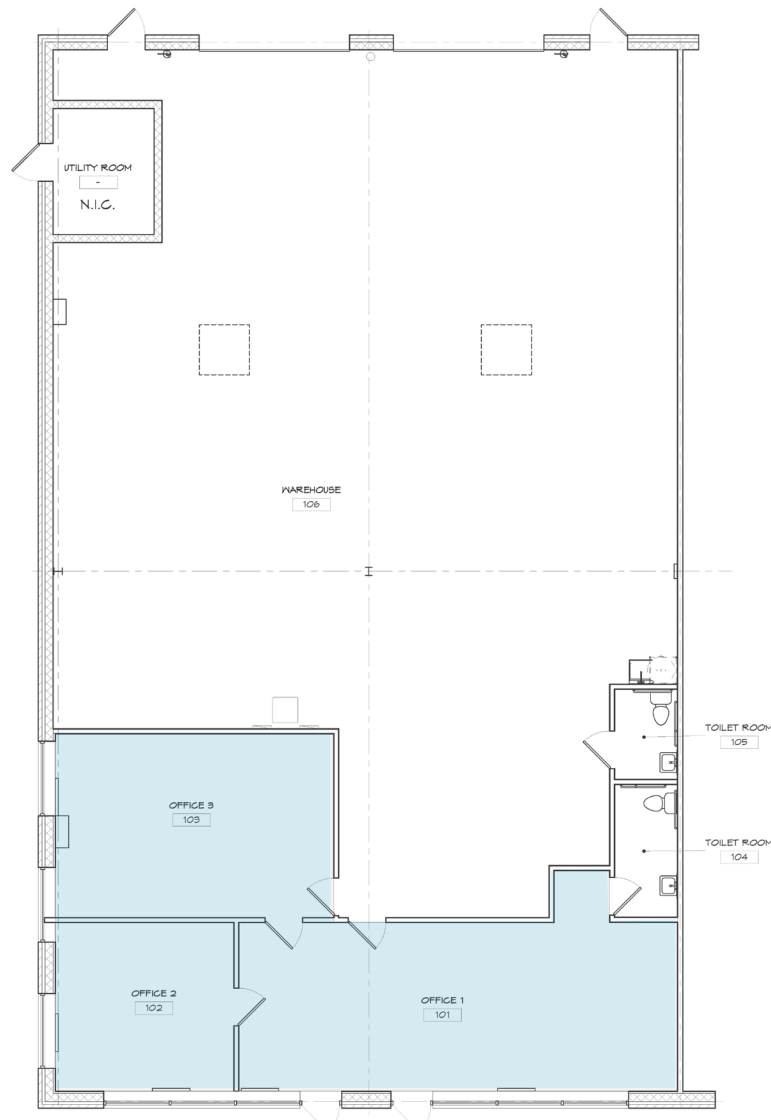
Spence Daw
sdaw@klnb.com
443-574-1429

9881 Broken Land Pkwy, #300
Columbia, MD 21046
klnb.com

NAI klnb

HAMPTON COMMERCE CENTER

9201 - 9203 Hampton Overlook
Capitol Heights, MD 20743, Prince George's County



SQUARE FOOTAGE KEY LEGEND	
OFFICE SPACE	= 1,020 SF
WAREHOUSE	= 3,150 SF
TOILET ROOMS	= 90 SF
TOTAL SPACE	= 4,260 SF

FLOOR PLAN

Aaron Carroll
acarroll@klnb.com
202-652-2333

Spence Daw
sdaw@klnb.com
443-574-1429

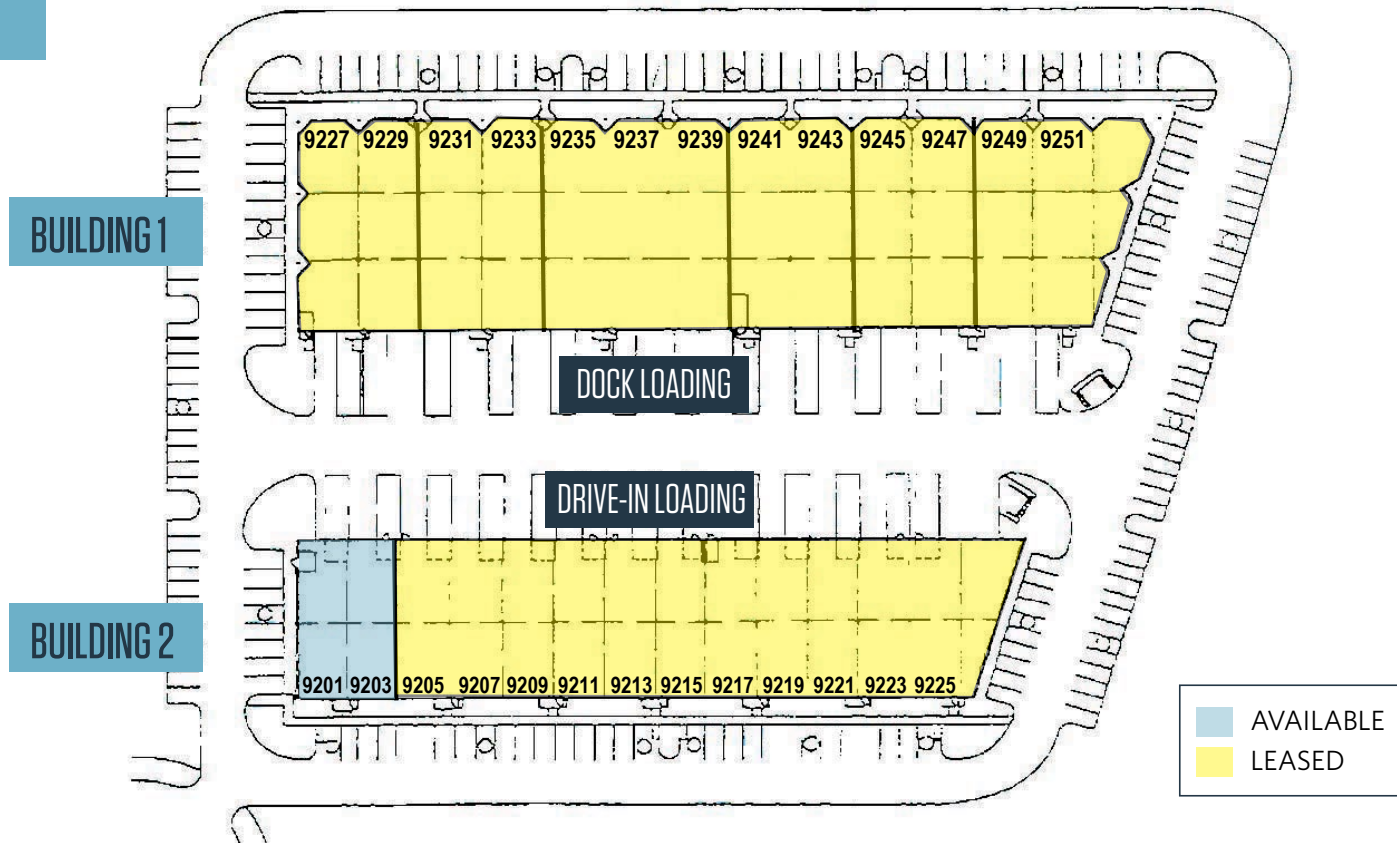
9881 Broken Land Pkwy, #300
Columbia, MD 21046
klnb.com



HAMPTON COMMERCE CENTER

9201 - 9203 Hampton Overlook
Capitol Heights, MD 20743, Prince George's County

BUILDING 1: Dock Loading
BUILDING 2: Drive-In Loading



MANAGED BY:



SITE PLAN

Aaron Carroll
acarroll@klnb.com
202-652-2333

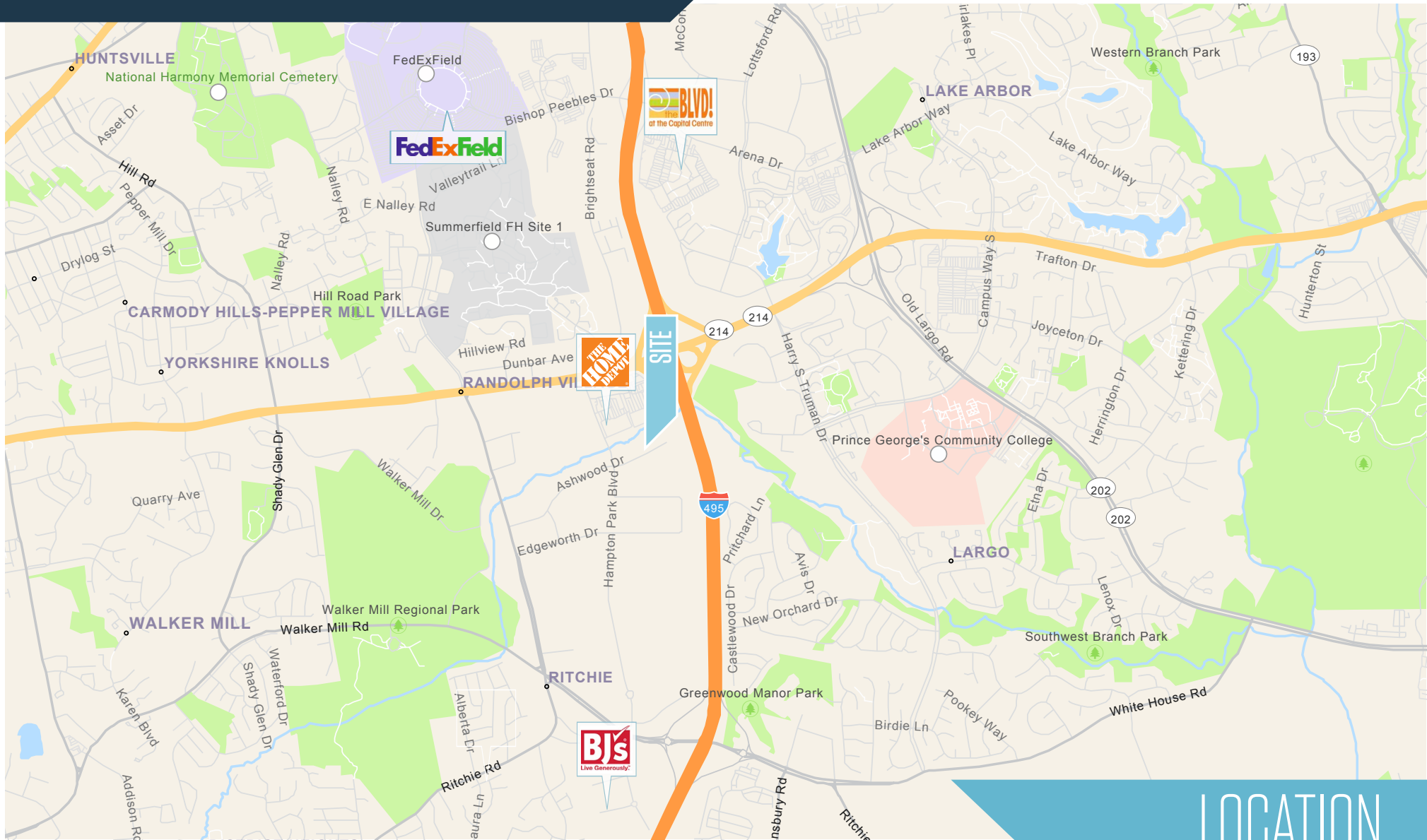
Spence Daw
sdaw@klnb.com
443-574-1429

9881 Broken Land Pkwy, #300
Columbia, MD 21046
klnb.com



HAMPTON COMMERCE CENTER

9201 - 9203 Hampton Overlook
Capitol Heights, MD 20743, Prince George's County



LOCATION

Aaron Carroll
acarroll@klnb.com
202-652-2333

Spence Daw
sdaw@klnb.com
443-574-1429

9881 Broken Land Pkwy, #300
Columbia, MD 21046
klnb.com



HAMPTON COMMERCE CENTER

9201- 9203 Hampton Overlook
Capitol Heights, MD 20743, Prince George's County

CLICK TO VIEW PROPERTY WEBSITE

For More Information, Please Contact:

Aaron Carroll

acarroll@klnb.com

202-652-2333

Spence Daw

sdaw@klnb.com

443-574-1429

9881 Broken Land Parkway, Suite 300
Columbia, MD 21046

klnb.com



[instagram.com/klnbcre](https://www.instagram.com/klnbcre)



[linkedin.com/company/klnb](https://www.linkedin.com/company/klnb)



[facebook.com/KLNBCRE](https://www.facebook.com/KLNBCRE)

While we have no reason to doubt the accuracy of any of the information supplied, we cannot, and do not, guarantee its accuracy. All information should be independently verified prior to a purchase or lease of the property. We are not responsible for errors, omissions, misuse, or misinterpretation of information contained herein and make no warranty of any kind, express or implied, with respect to the property or any other matters.

NAI klnb