

NORTH POINTE PLAZA

2722 N Salisbury Blvd, Suite 1, Salisbury, MD 21801

Wicomico County



HOBBY LOBBY

AVAILABLE
11,960 SF

SALLY BEAUTY

CHIMATOWN BUFFET
GRILL & SUSHI

KOHL'S

NORTH POINTE PLAZA

DOLLAR TREE
BUFFALO WILD WINGS

Wendy's

BURGER KING

verizon

HSB
Hebron Savings Bank

IHOP

Chick-fil&

Wawa

Dagsboro Rd

34,540
[2024 ADT]

Ocean Hwy

Joe Mekulski
jmekulski@klnb.com
443-632-1343

Joe Botzler
jbotzler@klnb.com
443-226-2703

100 West Road, Suite 505
Towson, MD 21204
klnb.com



NORTH POINTE PLAZA

2722 N Salisbury Blvd, Suite 1, Salisbury, MD 21801
Wicomico County



JOIN



RETAIL FOR LEASE

- 11,960 SF of junior anchor space for lease in the heart of the Salisbury retail market.
- North Point Plaza is shadow anchored by Super Walmart, Kohls and Sam's Club.
- Co-tenants include: Hobby Lobby, Dollar Tree, Buffalo Wild Wings, and Chinatown Buffet.
- Adjacent pad tenants include: Chili's, Wawa, Chick-Fil-A, IHOP, Verizon, Hebron Savings Bank, Burger King & Wendy's.
- Four (4) point of ingress/egress from Rt. 13 including two signalized intersections and traffic of 34,540 VPD.
- High Performing Retailers with Strong Placer ratings.
 - Chick Fil A-98th Percentile in MD
 - Walmart-78th Percentile in MD
 - Hobby Lobby-70th Percentile in MD

LEASED BY:

klnb

Joe Mekulski
jmekulski@klnb.com
443-632-1343

Joe Botzler
jbotzler@klnb.com
443-226-2703

100 West Road, Suite 505, Towson, MD 21204
klnb.com

NORTH POINTE PLAZA

2722 N Salisbury Blvd, Suite 1, Salisbury, MD 21801
Wicomico County

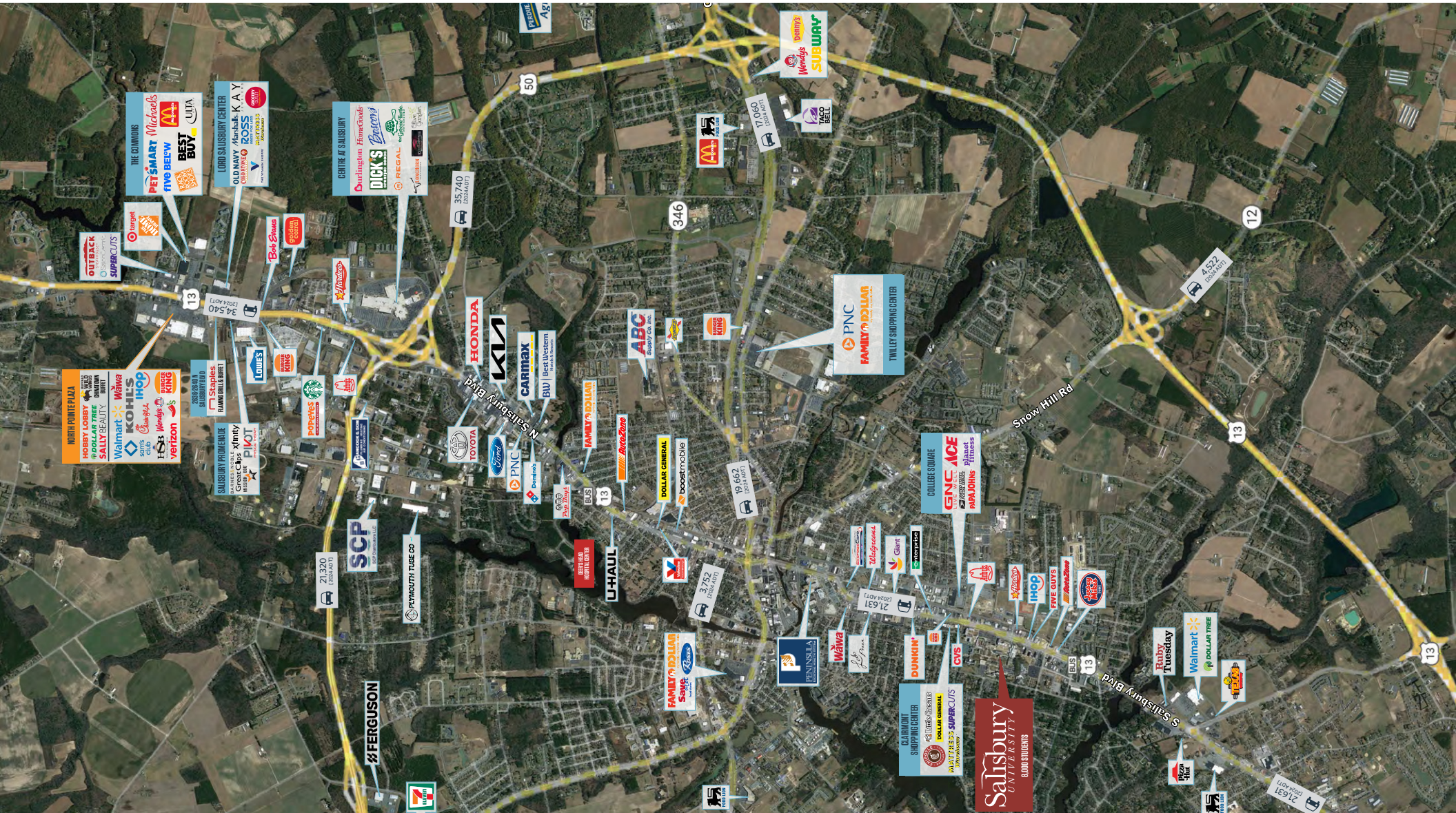
SITE PLAN



NORTH POINTE PLAZA

2722 N Salisbury Blvd, Suite 1, Salisbury, MD 21801
Wicomico County

MARKET AERIAL



Joe Mekulski
jmekulski@klnb.com
443-632-1343

Joe Botzler
jbotzler@klnb.com
443-226-2703

100 West Road, Suite 505
Towson, MD 21204
klnb.com



NORTH POINTE PLAZA

2722 N Salisbury Blvd, Suite 1, Salisbury, MD 21801
Wicomico County



AVAILABLE SPACE:
• 11,960 SF

**LOCATION
& DEMOGRAPHICS**

[DOWNLOAD DEMOGRAPHIC REPORT](#)

TRAFFIC COUNTS | 2024

Ocean Hwy	34,540 ADT
-----------	------------

	3-MILES	5-MILES	10-MILES			
	Population 21,858	57,740	114,451		Households 8,636	23,179 44,426
	Daytime Population 23,947	70,637	114,222		Average Household Income \$89,662	\$84,618 \$93,587

Joe Mekulski
jmekulski@klnb.com
443-632-1343

Joe Botzler
jbotzler@klnb.com
443-226-2703

100 West Road, Suite 505
Towson, MD 21204
klnb.com



NORTH POINTE PLAZA

2722 N Salisbury Blvd, Suite 1, Salisbury, MD 21801

Wicomico County

[CLICK TO VIEW PROPERTY WEBSITE](#)

For More Information, Please Contact:

Joe Mekulski

jmekulski@klnb.com

443-632-1343

Joe Botzler

jbotzler@klnb.com

443-226-2703



While we have no reason to doubt the accuracy of any of the information supplied, we cannot, and do not, guarantee its accuracy. All information should be independently verified prior to a purchase or lease of the property. We are not responsible for errors, omissions, misuse, or misinterpretation of information contained herein and make no warranty of any kind, express or implied, with respect to the property or any other matters.

100 West Road, Suite 505
Towson, MD 21204
klnb.com

